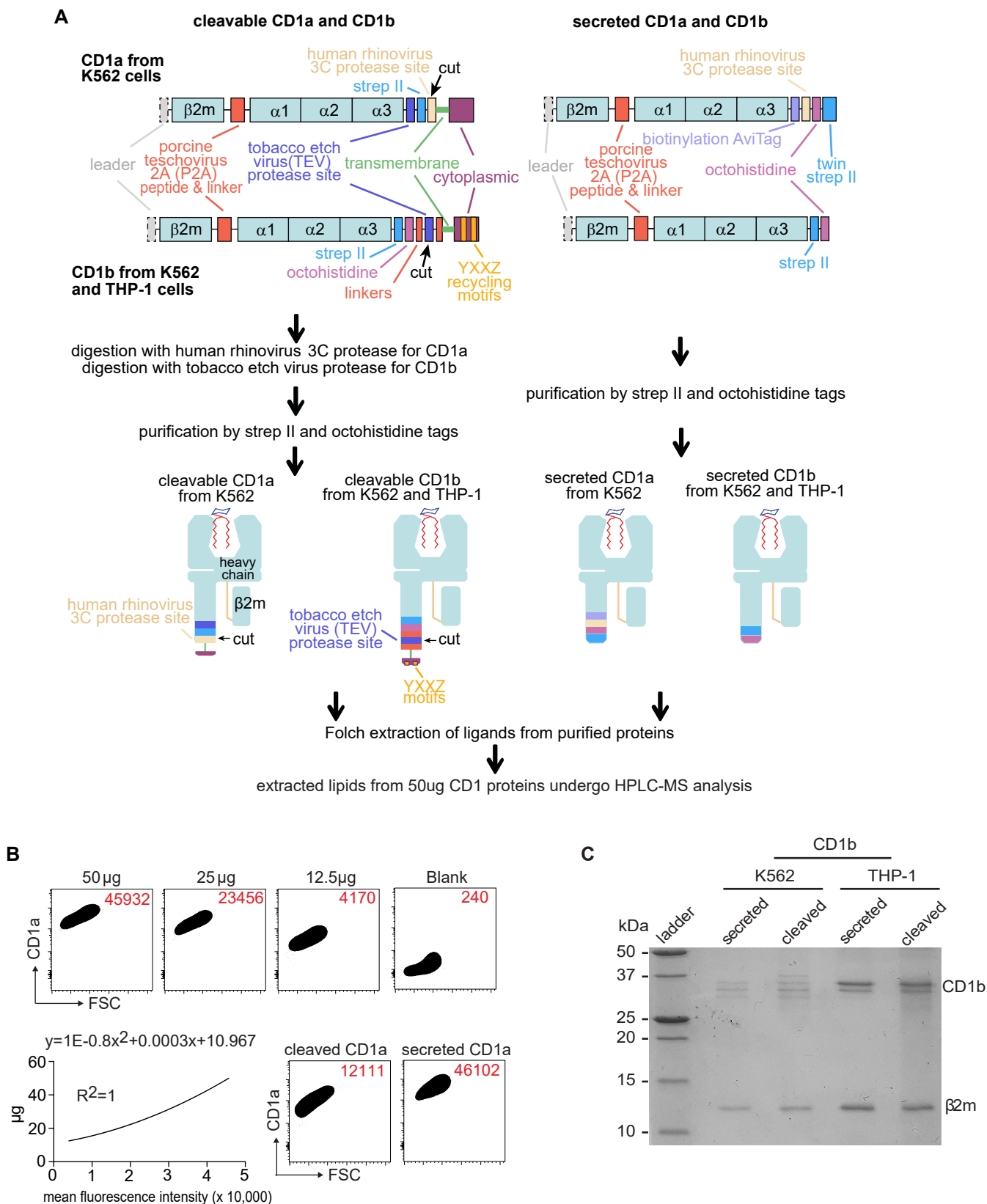


Figure S3 related to Figure 3

Schematic of cleavable versus secreted CD1 expression and quantification



(A) Schematic diagrams of cleavable versus secreted CD1a or CD1b expression were shown. (B) Capture beads were treated with cleaved or secreted human CD1a proteins and subjected to flow cytometric analysis with an external standard to determine the absolute concentration of CD1a protein. (C) Human secreted or cleaved CD1b proteins from the indicated cell types were captured after secretion or enzyme cleavage and subjected to polyacrylamide gel electrophoresis to yield gel patterns corresponding to β 2-microglobulin (β 2M, ~12 Kd) and the glycosylated CD1b heavy chain (~31-36 Kd).