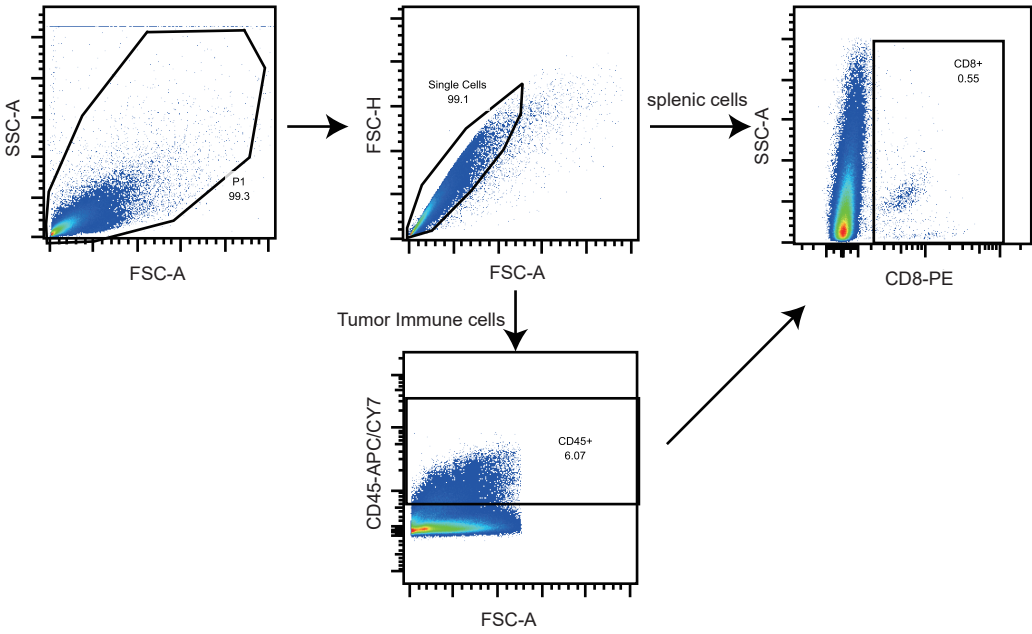


Supplementary Figure 1



Supplementary Figure Legends

Supplementary Figure 1. Flow Cytometry gating strategy.

Cells were gated based on FSC-A/SSC-A parameters and then gated by FSC-A versus FSC-H to select single cells. Splenic cells were further gated for CD8 positive cells. Immune cells from tumor tissues were further gated for CD45 positive cells. Gates indicating boundaries between "positive" and "negative" are based on staining of isotype control antibodies.

Supplementary Table 1. Antibody resources table

Antibody for immunoblotting	Vendor	Catalogue number
Acod1 (1:1000)	Abcam	ab222411
beta-actin (1:5000)	Cell signaling technology	#3700
Phospho-Stat3 (Tyr705) XP mAb (1:1000)	Cell signaling technology	#9145
Stat3(124H6) Mouse mAb (1:1000)	Cell signaling technology	#9139
Phospho-Stat1 (Tyr701) Rabbit mAb (1:1000)	Cell signaling technology	#9167
Stat1(D1K9Y) mAb (1:1000)	Cell signaling technology	#14994
Phospho-Jak1(Tyr1034/1035) mAb (1:1000)	Cell signaling technology	#3331
Phospho-Jak2 (Tyr1007/1008) mAb (1:1000)	Cell signaling technology	#3771
Jak1(D1T6W) antibody (1:1000)	Cell signaling technology	#50996
Jak2(D2E12) antibody (1:1000)	Cell signaling technology	#3230
Antibody for Immunofluorescence		
Acod1 (1:100)	Abcam	ab238580
LOX1 (1:100)	Abcam	ab126538
CD163 (1:200)	Cell signaling technology	#93498S
CD45R/B220	Biolegend	#103202
CD3	Dako	A0452
Antibody for flow cytometry		
anti-CD16/CD32 mAb (1:50)	Invitrogen	#14-0161-82
Alexa Fluor® 488 anti-mouse/human CD11b Antibody (1:50)	Biolegend	#101217
APC anti-mouse Ly6G antibody (1:50)	Biolegend	#127614
PE anti-mouse Ly6C antibody (1:50)	Biolegend	#128008
APC anti-mouse CD4 Antibody (1:50)	Biolegend	#100412
APC/CY7 anti-mouse CD45 antibody (1:50)	Biolegend	#103116
APC anti-mouse IFN γ (1:50)	Biolegend	#505810
PE/Cyanine7 anti-mouse TNF α (1:50)	Biolegend	#506323
FITC anti-human/mouse Granzyme B (1:50)	Biolegend	#515403
PE anti-mouse Perforin (1:50)	Biolegend	#154305
PE/CY7, isotype ctr (1:50)	Biolegend	#400618
APC, isotype ctr (1:50)	Biolegend	#401210
FITC, isotype ctr (1:50)	Biolegend	#406001
FITC Mouse IgG1, κ Isotype Ctrl Antibody (1:50)	Biolegend	#400108
APC Rat IgG1, κ Isotype Ctrl Antibody (1:50)	Biolegend	#400412
PE/Cyanine7 Rat IgG1 Antibody (1:50)	Biolegend	#400416

PE Rat IgG2a, κ Isotype Ctrl Antibody (1:50)	Biolegend	#400508
PE/Cyanine7 anti-mouse IL-2 Antibody (1:50)	Biolegend	#503831
APC anti-mouse CD8a (1:50)	Biolegend	#100712
FITC anti-mouse CD8a (1:50)	Biolegend	#100706
PE anti-mouse CD8a (1:50)	Biolegend	#100708
PE anti-mouse CD69 (1:50)	Biolegend	#104507
FITC anti-human CD8a (1:50)	Biolegend	#300911
5-Hydroxymethylcytosine (5-hmC) (1:200)	Active Motif	#39769
Rabbit IgG Isotype Control (1:200)	Thermo Fisher Scientific	#02-6102
Donkey anti-Rabbit IgG (H+L) Secondary Antibody, Alexa Fluor™ 647 (1:2000)	Invotrogen	#A-31573
Antibody for in vivo experiment		
Ultra-LEAF™ Purified anti-mouse CD279(PD-1)	BioLegend	#135250
Ultra-LEAF™ Purified Rat IgG2a, κ Isotype Ctrl	BioLegend	#400566
Anti-mouse CD8a in vivo antibody	BioXcell	#BE0117
Rat IgG2b isotype control in vivo antibody	BioXcell	#BE0090