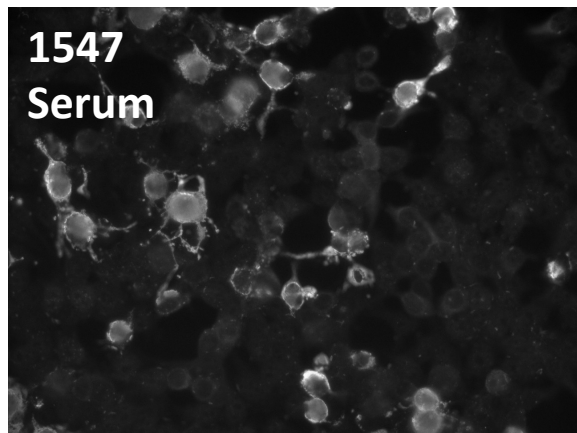
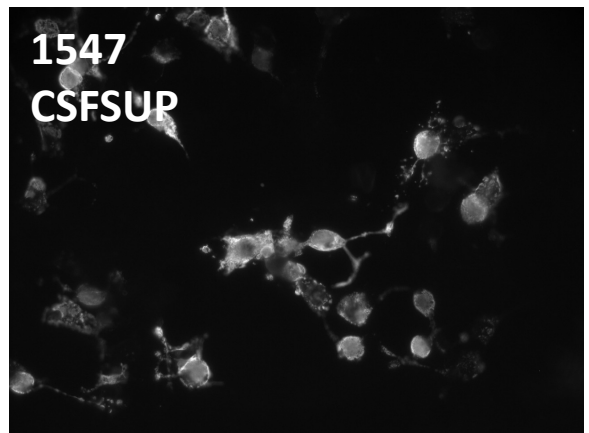


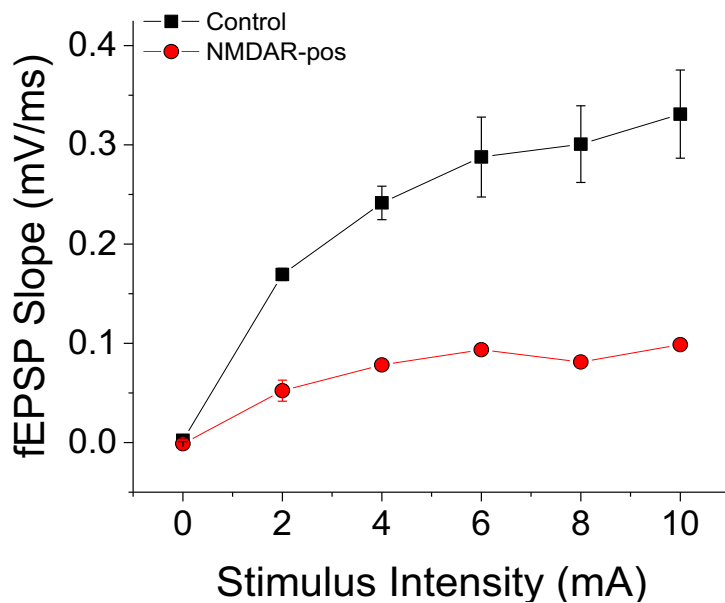
A



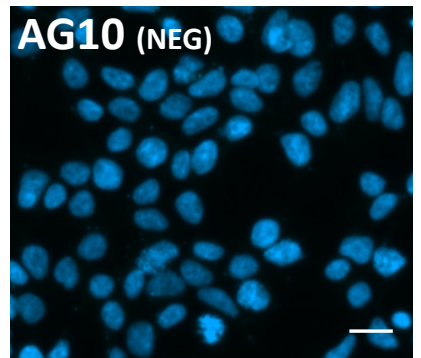
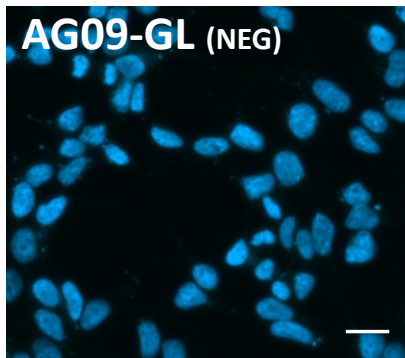
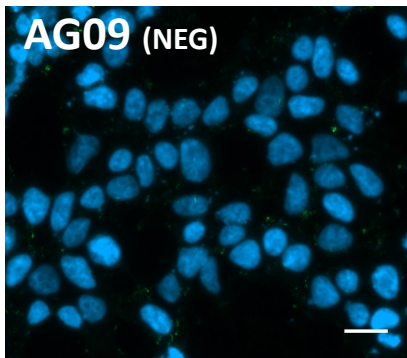
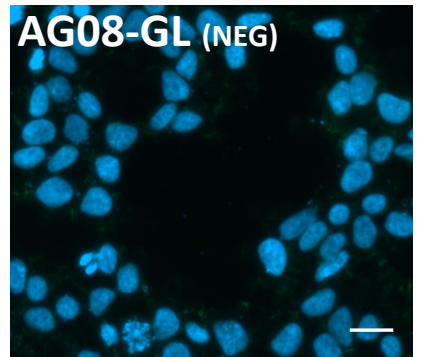
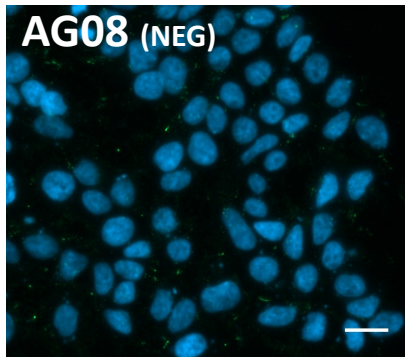
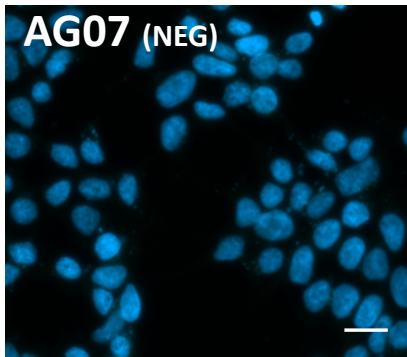
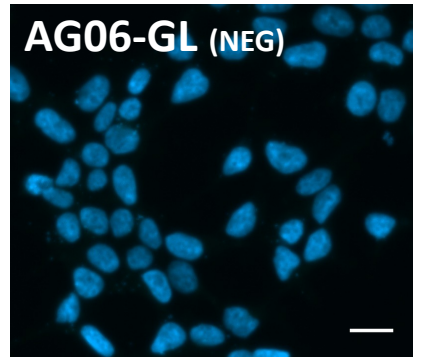
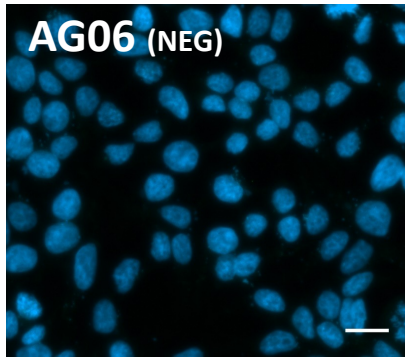
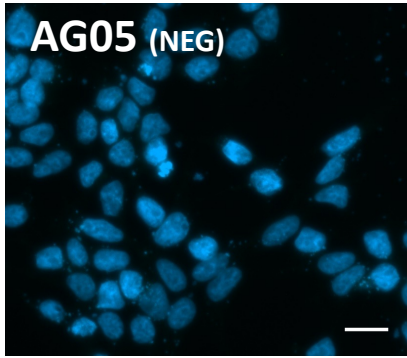
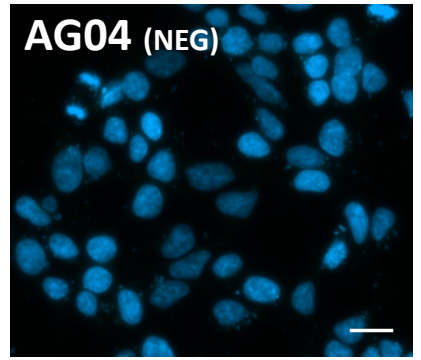
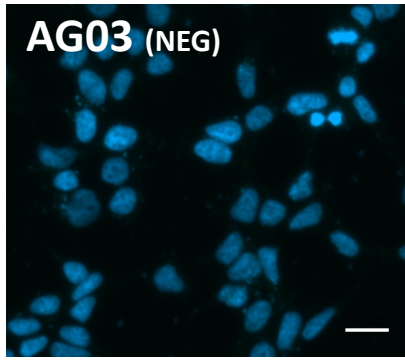
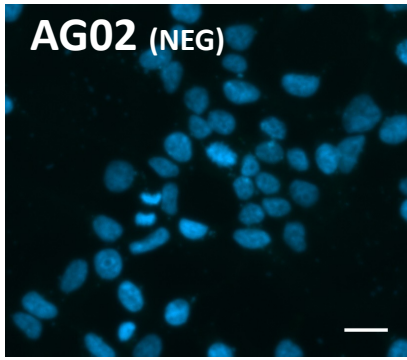
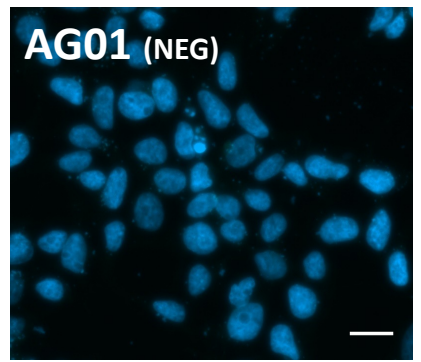
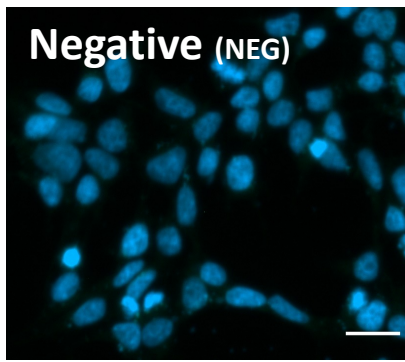
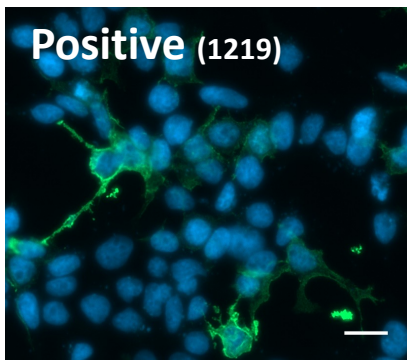
B



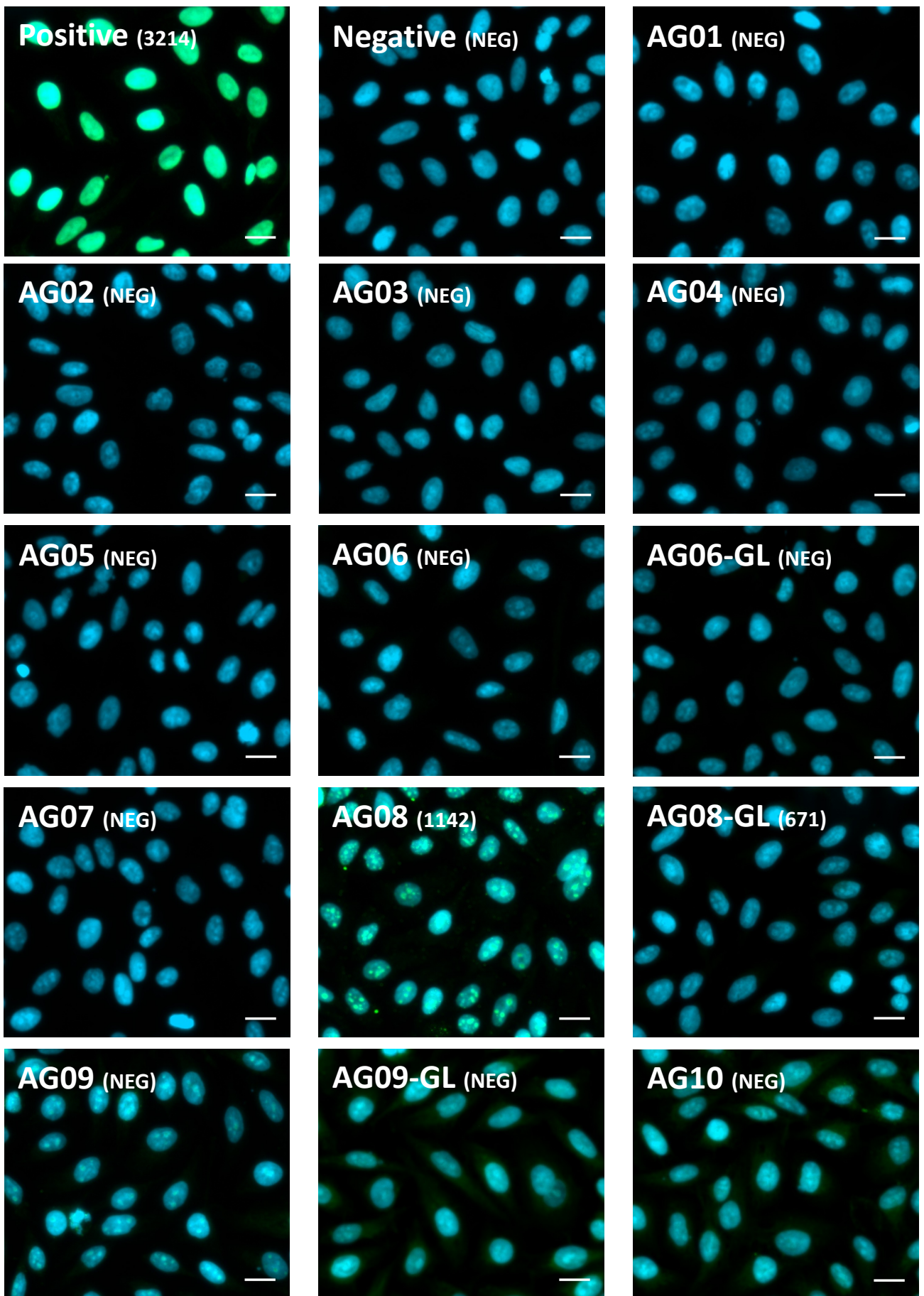
C



**SUPPLEMENTAL FIGURE 1.** Binding of NR1 by antibodies from the serum (A) and CSF (B) of NMDAR-AE subject 1547. Gray cells indicate positivity. (C) Extracellular “field” electrophysiology signal diminished with serum from NMDAR-AE subject 1547. See methods for details.



Supplemental Figure 2: AQP4 binding images.



Supplemental Figure 3: HEP2 binding images.