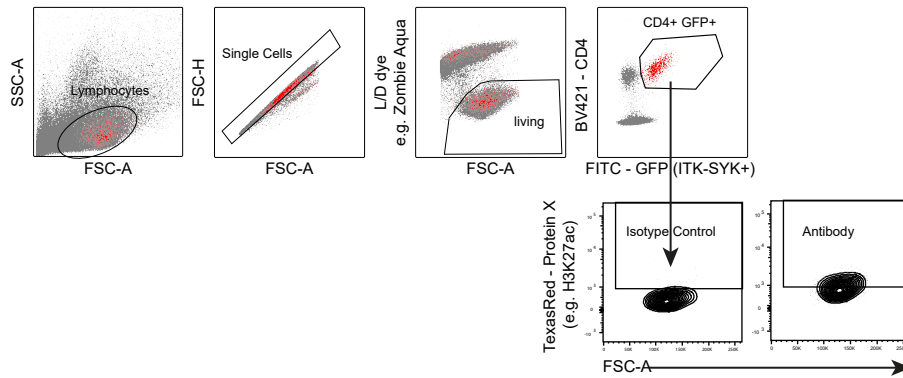




PD-1 instructs a tumor-suppressive metabolic program that restricts glycolysis and restrains AP-1 activity in T cell lymphoma

In the format provided by the authors and unedited

Exemplified Gating Strategy



Gating strategy for phosFlow analyses in murine/human tumor cells:

Gate 1: SSC-A and FSC-A were used to determine the lymphocyte gate depending on size

Gate 2: FSC-H and FSC-A were used to exclude duplets

Gate 3: a negative gate is used to exclude dead/dying cells

Gate 4: CD4+ and FITC+ gate was used to specifically detect tumor cells

Gate 5: proteins of interest; gates have been defined using isotype controls