

Figure S1. Impact of *acpB* deletion on *S. pyogenes* growth capacity in rich media. Growth curves of WT, mFabT, AcpB and BWT strains, in A) THY and B) THY-Tween media. Growth was monitored in a Multiscan (Thermo Scientific).

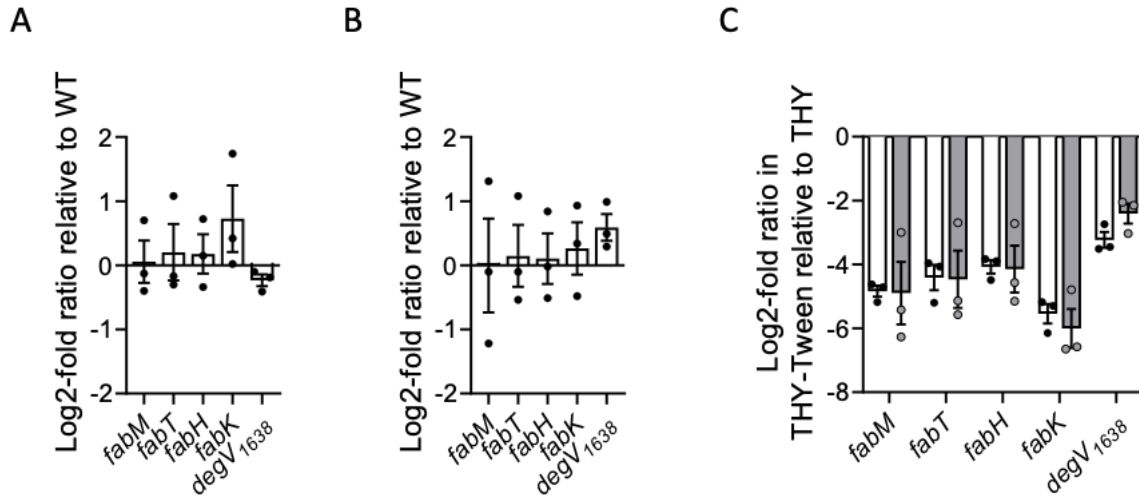


Figure S2. Comparison of FASII and the FabT-regulated *degV*₁₆₃₈ gene repression in *S. pyogenes* WT and BWT strains. Strains were grown in THY (A, C) or THY-Tween 80 (B, C) and RNAs were quantified by qRT-PCR. Expression was normalized to that of *gyrA*; (A, B) relative gene expression is expressed as the log₂-fold ratio in BWT *versus* WT strain. C) The relative gene expression is expressed as the log₂-fold ratio between a given strain grown in THY Tween 80 *versus* THY, white bars, WT; grey bars, BWT

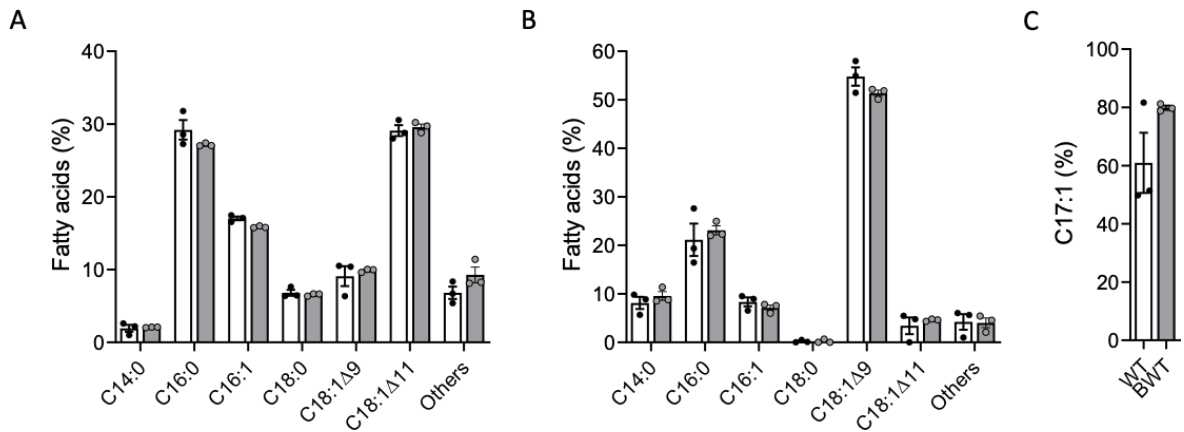


Figure S3. FA membrane composition of WT and BWT strains. Quantified proportions of major FAs of WT and BWT strains grown in A) THY; B) THY-Tween 80, C) THY-17:1; bars, white, WT strain; grey, BWT strain. Comparisons were carried out between WT and BWT strains; none were statistically different.

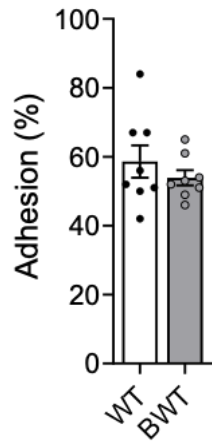


Figure S4. Comparison of the BWT and WT adhesion capacity. Adhesion to human endometrial cells. Bars and symbols, white, WT strain; grey, BWT strain N= 8; T-test, no statistical difference.