

Supplementary Materials

Title: Differential Regulation of Nucleus Accumbens Glutamate and GABA in Obesity-Prone and Obesity-Resistant Rats

Authors: Peter J. Vollbrecht^{1*}, Kathryn M. Nesbitt³, Victoria M. Addis¹, Keenan M. Boulnemour¹, Daniel A. Micheli¹, Kendall B. Smith¹, Darleen A. Sandoval², Robert T. Kennedy³, Carrie R. Ferrario^{4*}

Affiliations:

1. Department of Biomedical Sciences, Western Michigan University Homer Stryker M.D. School of Medicine, Kalamazoo, MI

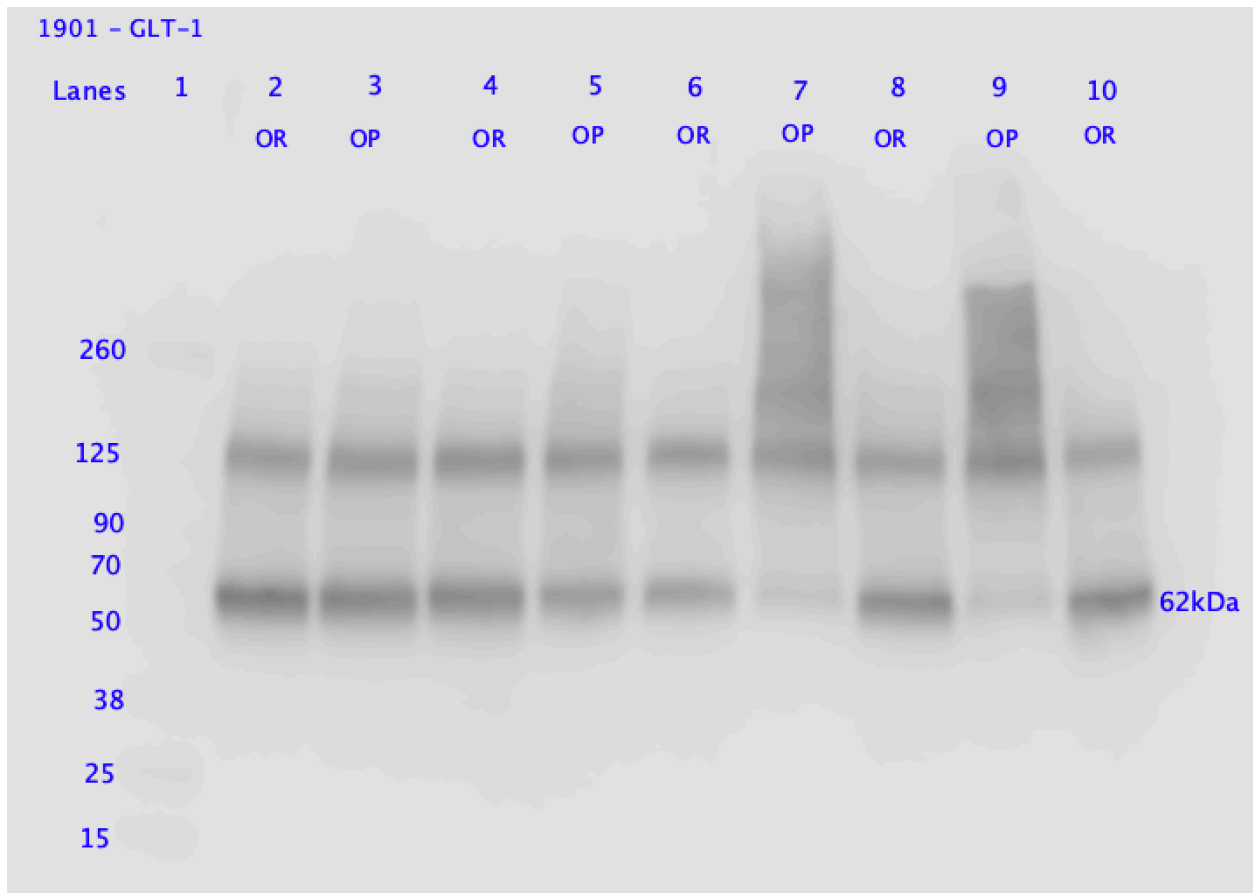
2. Department of Pediatrics, University of Colorado, School of Medicine, Anschutz Medical Campus, Aurora, CO

3. Department of Chemistry, Department of Pharmacology, University of Michigan, Ann Arbor, MI

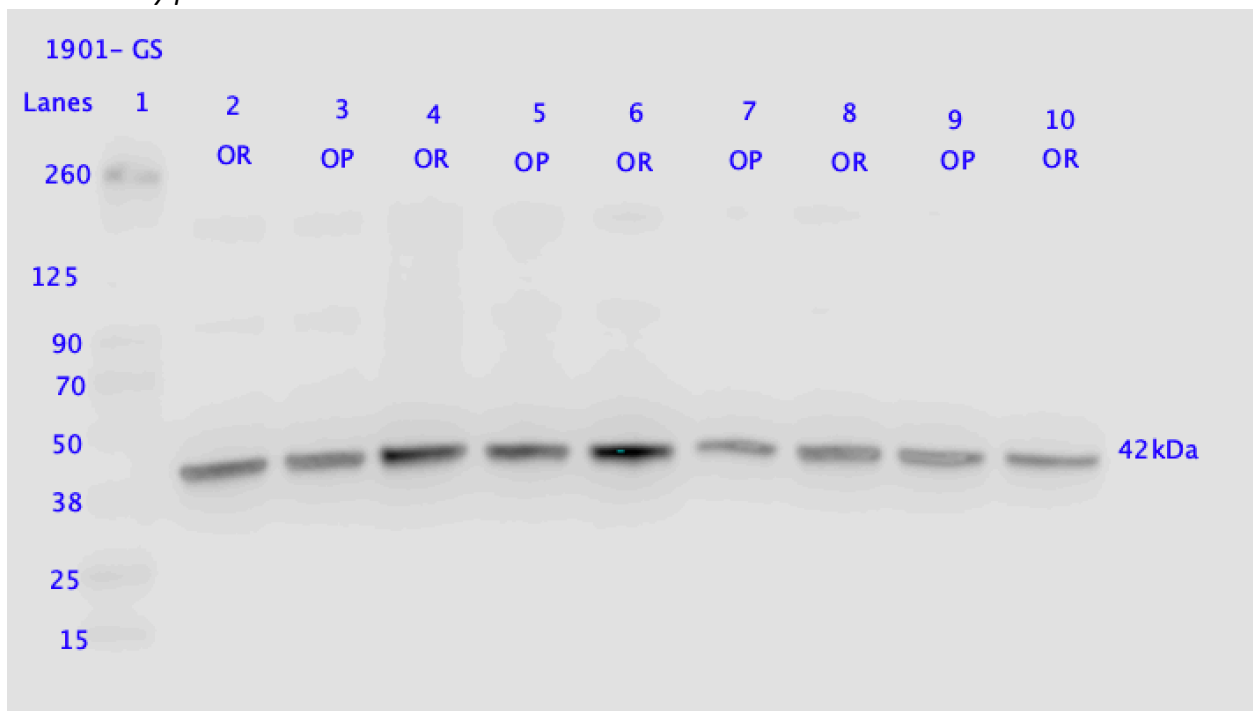
4. Department of Pharmacology, Psychology Department (Biopsychology) University of Michigan, Ann Arbor, MI

*Corresponding authors: Carrie Ferrario (ferrario@umich.edu), Peter Vollbrecht (peter.vollbrecht@med.wmich.edu)

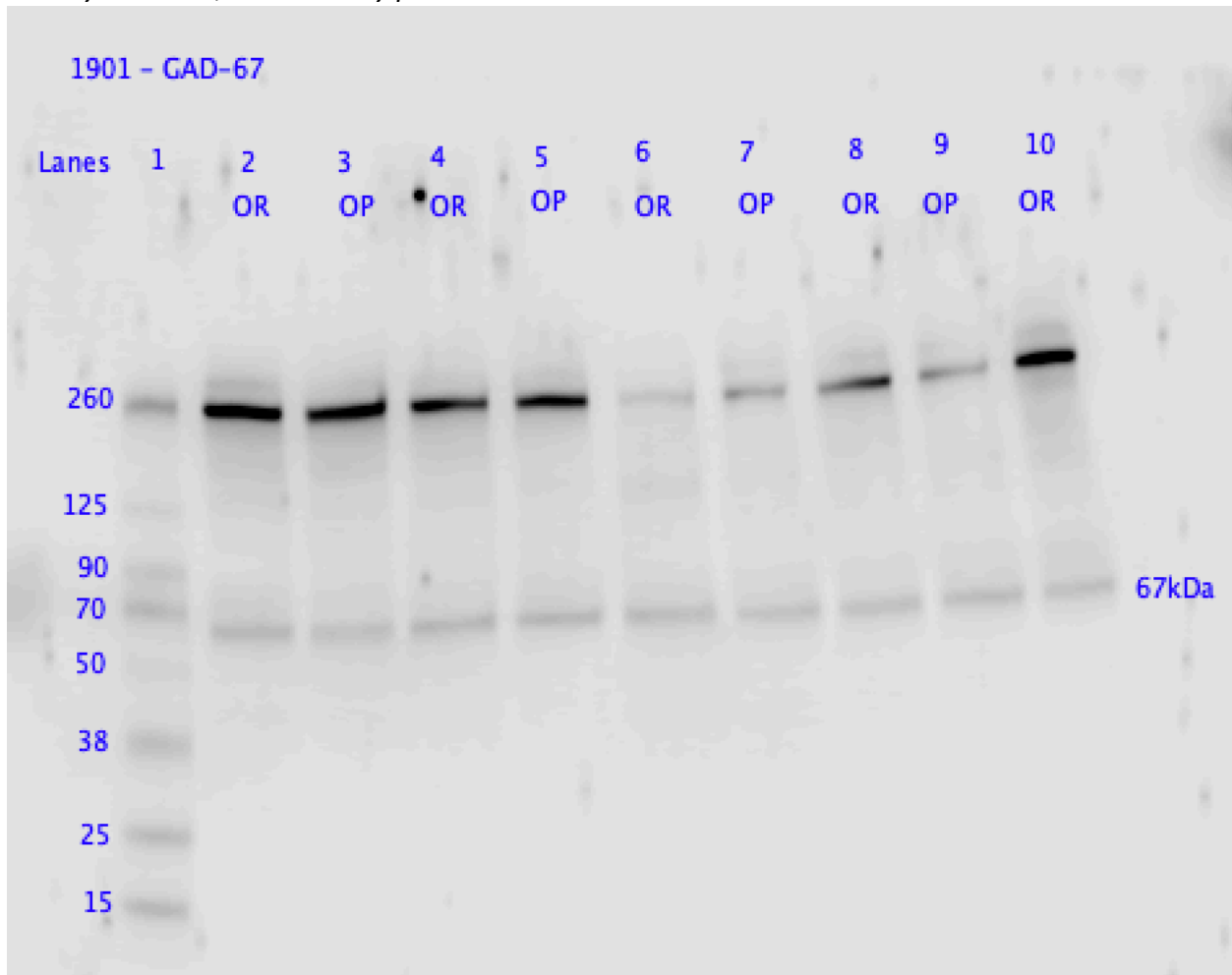
Supplementary Figures:



Supplementary Figure 1 – Raw GLT-1 Western blot with annotations of lanes and molecular weight markers (kD). Each lane contains a sample from a unique animal. *OR* = *obesity resistant*; *OP* = *obesity prone*



Supplementary Figure 2 – Raw glutamine synthetase western blot with annotations of lanes and molecular weight markers (kD). Each lane contains a sample from a unique animal. *OR* = *obesity resistant*; *OP* = *obesity prone*



Supplementary Figure 3 – Raw GAD-67 western blot with annotations of lanes and molecular weight markers (kD). Each lane contains a sample from a unique animal. *OR* = *obesity resistant*; *OP* = *obesity prone*