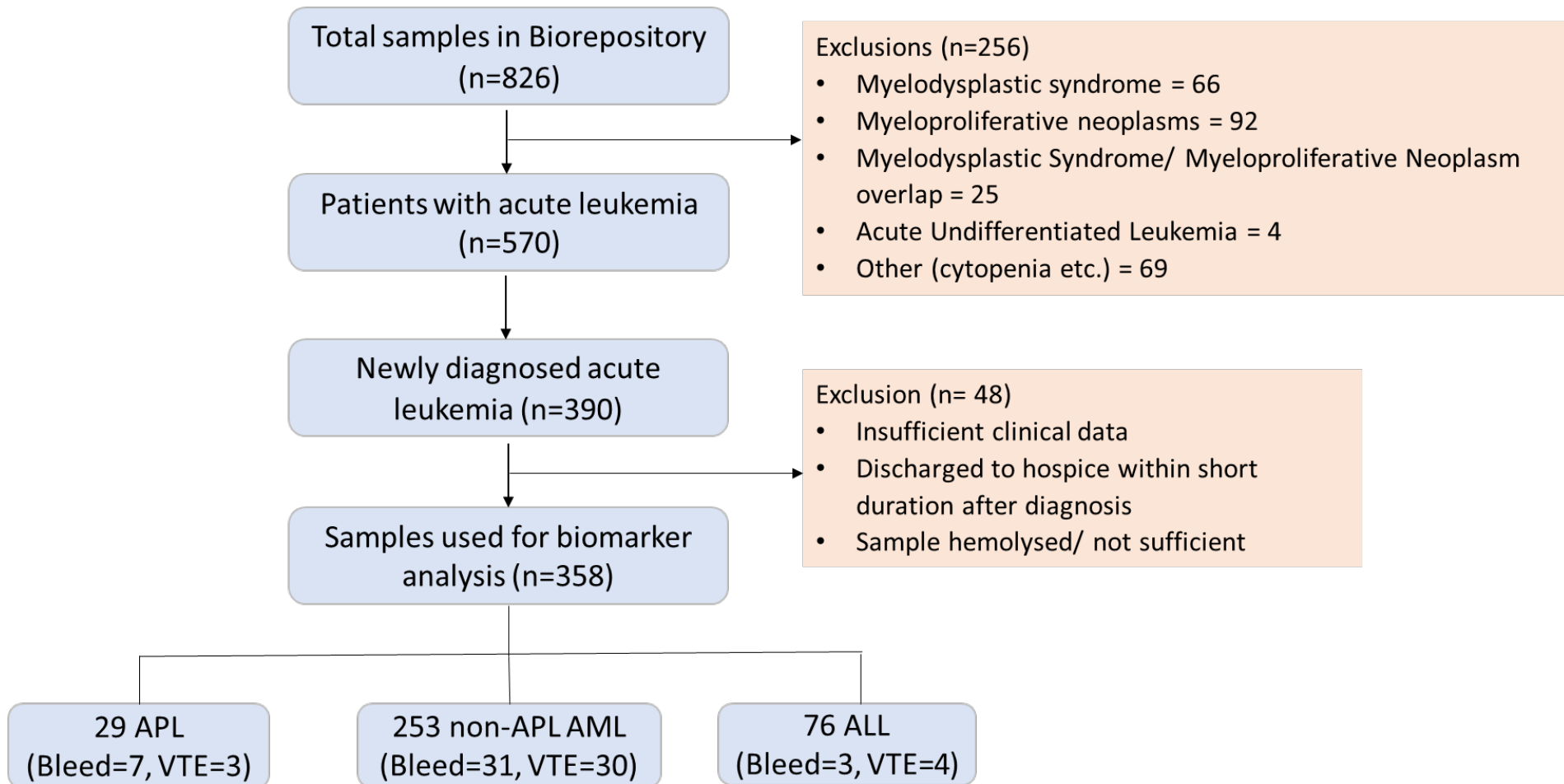
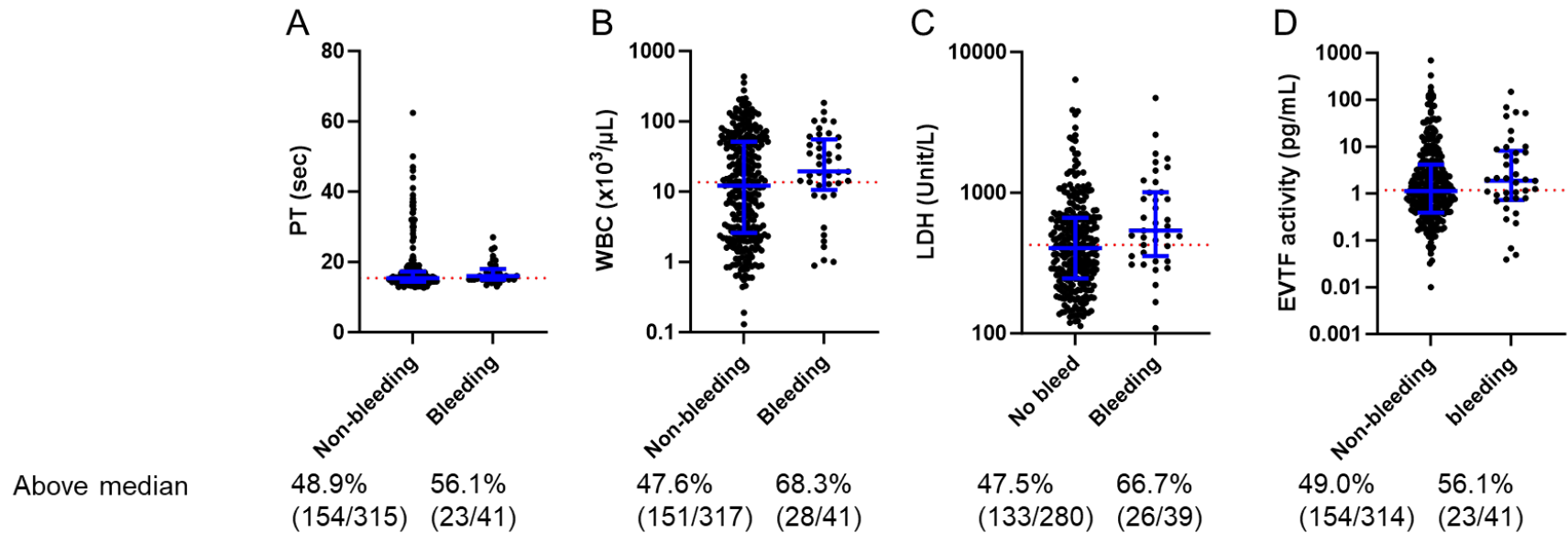


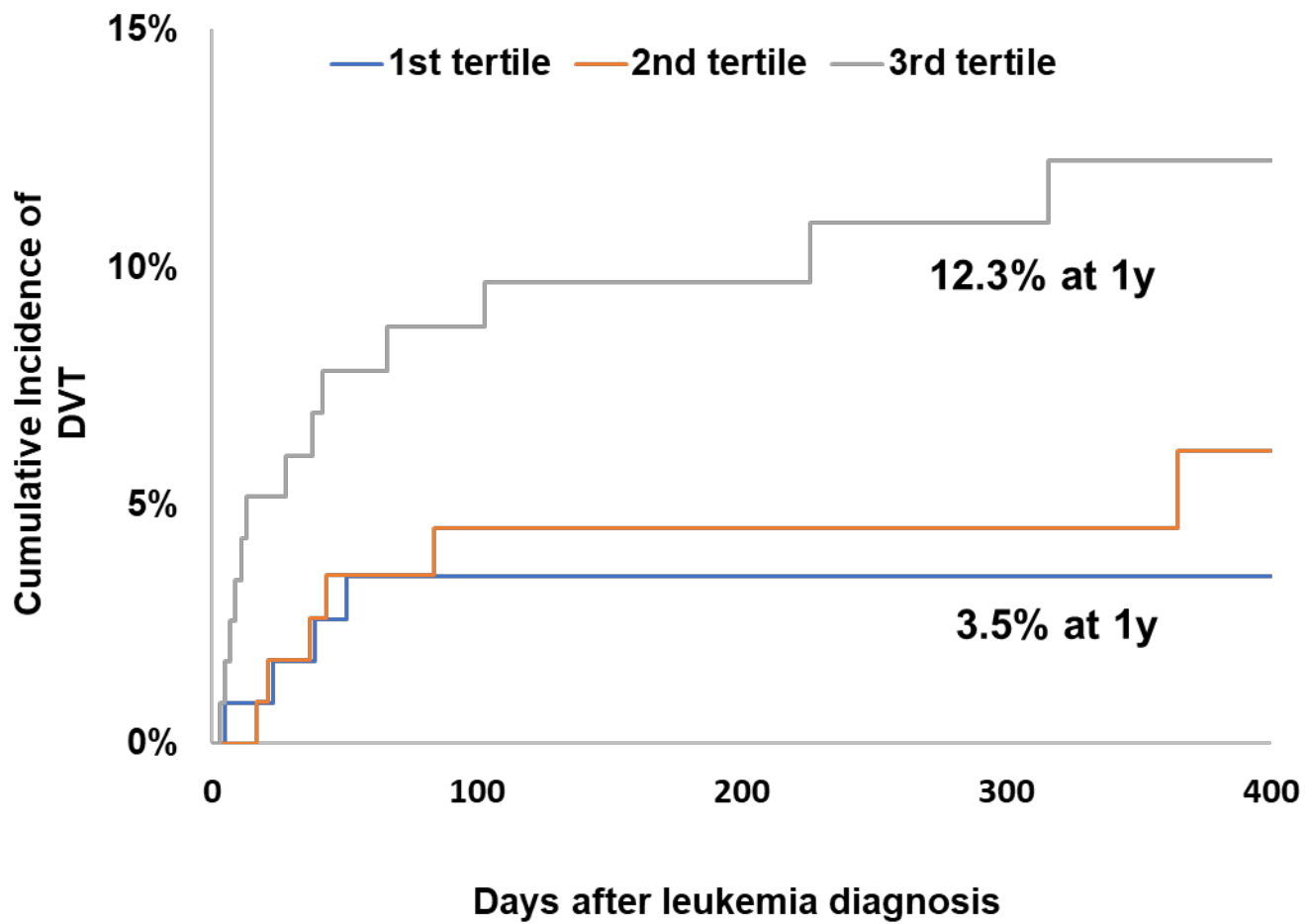
Supplementary materials



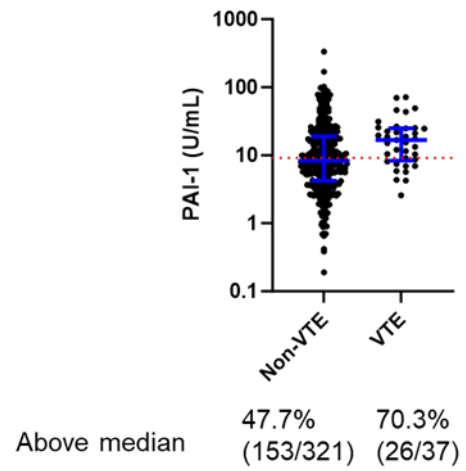
Supplementary Figure 1. Flow chart to demonstrate inclusion and exclusion of patients in the study.



Supplementary Figure 2. Levels of biomarkers between acute leukemia patients with and without bleeding. (A) PT, (B) WBC, (C) LDH and (D) EVTF activity levels in acute leukemia patients with and without bleeding are shown. Blue lines indicate median \pm interquartile range. Red dotted lines indicate the median level of all patients.



Supplementary Figure 3. Cumulative incidence of deep vein thrombosis by tertiles of plasminogen activator inhibitor-1 levels.



Supplementary Figure 4. Levels of PAI-1 in acute leukemia patients with and without VTE. Blue line indicates median \pm interquartile range. Red dotted line indicates the median level of all patients.

Supplementary Table 1. Definitions for disseminated intravascular coagulation, bleeding, and venous thromboembolism outcomes.

| Outcome | Definition |
|--|--|
| Disseminated intravascular coagulation (DIC) | Defined according to the International Society for Thrombosis and Haemostasis (ISTH) criteria and score ≥ 5 was defined as overt DIC and score < 5 as no-DIC: <ul style="list-style-type: none"> - Platelet count ($\geq 100 \times 10^3/\mu\text{L}$ = 0; $50-99 \times 10^3/\mu\text{L}$ = 1; $< 50 \times 10^3/\mu\text{L}$ = 2) - Fibrinogen level (≥ 100 mg/dL = 0; < 100 mg/dL = 1) - Prothrombin time (PT) prolongation above the upper limit of normal (ULN) range (< 3 seconds = 0; 3-6 seconds = 1; > 6 seconds = 2) - D dimer (< 2 times ULN normal [480 ng/mL] = 0; 2-4 times ULN (480-960 ng/mL) = 2; > 4 times ULN (960 ng/mL) = 3] |
| Major Bleeding | Defined according to the ISTH classification: <ul style="list-style-type: none"> - Fatal bleeding - Symptomatic bleeding in critical site/ organ including intracranial, intra-spinal, intraocular, retroperitoneal, intra-articular, pericardial, and intramuscular bleeding with compartment syndrome - Bleeding causing drop in hemoglobin level of ≥ 2 g/dL or leading to transfusion of ≥ 2 units of whole blood or red cells |
| Clinically relevant non major bleeding | Defined according to the ISTH classification: <ul style="list-style-type: none"> - Bleeding requiring medical intervention - Bleeding resulting in hospitalization - Bleeding prompting face-to-face evaluation - Not fulfilling criteria for major bleeding |
| Deep vein thrombosis (DVT) | <ul style="list-style-type: none"> - Acute symptomatic or incidental lower or upper extremity DVT - Catheter related DVT - Acute symptomatic or incidental visceral vein thrombosis - Acute symptomatic or incidental cerebral vein thrombosis |
| Pulmonary embolism (PE) | <ul style="list-style-type: none"> - Acute symptomatic PE - Acute incidental PE of the segmental or more proximal pulmonary arterial branches |
| Superficial vein thrombosis | <ul style="list-style-type: none"> - Acute symptomatic lower or upper extremity thrombosis involving superficial vein |

Supplementary Table 2. Comparisons between acute leukemia patients with high and mid to low EVTF activity.

| Parameters | Mid to Low EVTF (n=322) [Median (range)] | High EVTF (n =36) [Median (range)] | P value |
|--|---|---|----------------|
| WBC count (x 10 ³ /μL) | 11,580 [130-435,910] | 59,085 [2,370-171,050] | <0.0001 |
| Peripheral blood blast cell % | 56 [0-97] | 78.3 [37-96] | <0.0001 |
| D-dimer (ng/mL) | 1,138 [135-20,000] | 7,884 [230-20,000] | <0.0001 |
| Platelet count (x 10 ³ /μL) | 47,700 [3,400-859,000] | 39,600 [7,100-200,000] | 0.2488 |

Supplementary Table 3. Comparisons between APL patients with and without overt DIC.

| Characteristics | No-DIC (n=3) [median (range)] | Overt DIC (n=26) [median (range)] | P value |
|--|----------------------------------|--------------------------------------|---------------|
| EVTF activity (pg/mL) | 1.1 (0.7-3.5) | 9.3 (0-188.1) | 0.0353 |
| PS+EVs (nM) | 54.8 (14.4-67.6) | 31.0 (7.5-132.7) | >0.9999 |
| cfDNA (ng/mL) | 985.3 (868-1,103) | 1,144 (799.8-14,766) | NA |
| H3Cit-DNA complex (ng/mL) | 26.9 (0-32.9) | 19.5 (0-424.1) | 0.9087 |
| PAP (ng/mL) | 1,168 (97-15,179) | 6,131 (133-15,349) | 0.8666 |
| tPA (ng/mL) | 0.3 (0-0.9) | 0 (0-3.5) | 0.0999 |
| PAI-1 (U/mL) | 11.0 (7.8-21.2) | 16.7 (2.7-87.7) | 0.5161 |
| D-dimer (ng/mL) | 5,903 (222-6,917) | 16,639 (1,376-20,000) | 0.0112 |
| Fibrinogen (mg/dL) | 289 (281-525) | 167.5 (60-636) | 0.0367 |
| PT (sec) | 14.5 (13.8-15.5) | 17.0 (14.0-27.0) | 0.0435 |
| PTT (sec) | 28 (24-34) | 31 (24-200) | 0.3612 |
| WBC count (x 10 ³ /μL) | 0.9 (0.8-0.9) | 3.3 (0.6-79.8) | 0.0085 |
| Peripheral blood blast % | 17 (2.6-77) | 75 (7.5-89) | 0.1550 |
| Platelet count (x 10 ³ /μL) | 120 (51.3-131.6) | 29.9 (7.1-112.5) | 0.0011 |
| Creatinine (mg/dL) | 0.6 (0.5-1.7) | 0.9 (0.6-4.4) | 0.3194 |
| Hemoglobin (g/dL) | 9.4 (6.9-10.4) | 8.6 (3.6-12.4) | 0.8283 |
| LDH (Unit/L) | 140 (113-166) | 325 (133-1,898) | NA |
| Bleeding (n, %) | 0 (0) | 7 (26.9) | 0.5575 |
| VTE (n, %) | 0 (0) | 3 (11.5) | >0.9999 |

Abbreviations: cfDNA, cell-free DNA; EVTF, extracellular vesicle tissue factor; H3Cit-DNA, citrullinated histone H3-DNA; LDH, lactate dehydrogenase; NA, not applicable; PAI-1, plasminogen activator inhibitor-1; PAP, plasmin-antiplasmin complex; PS+EVs, phosphatidylserine-positive extracellular vesicles; PT, prothrombin time; PTT, partial thromboplastin time; tPA, tissue plasminogen activator; VTE, venous thromboembolism; WBC, white blood cell

Supplementary Table 4. Comparisons between non-APL AML patients with and without overt DIC.

| Characteristics | No-DIC (n=162) [median (range)] | Overt DIC (n=83) [median (range)] | P value |
|--|------------------------------------|--------------------------------------|-------------------|
| EVTF activity (pg/mL) | 1.1 (0-113) | 2.3 (0-4,086) | 0.0001 |
| PS+EVs (nM) | 56.8 (5.9-939.4) | 53.6 (0-357.2) | 0.2732 |
| cfDNA (ng/mL) | 1,164 (338.7-7,783) | 1,454 (446.2-20,109) | 0.0003 |
| H3Cit-DNA complex (ng/mL) | 32.1 (0-1,552) | 38.2 (0-934) | 0.1901 |
| PAP (ng/mL) | 5,110 (572.7-43,539) | 5,432 (23.6-70,334) | 0.5631 |
| tPA (ng/mL) | 1.8 (0-38.8) | 2.0 (0-19.6) | 0.6449 |
| PAI-1 (U/mL) | 8.0 (0.2-101.9) | 8.9 (0.7-335.4) | 0.1146 |
| D-dimer (ng/mL) | 732 (135-20,000) | 2,182 (624-20,000) | <0.0001 |
| Fibrinogen (mg/dL) | 456 (181-1,101) | 455 (60-795) | 0.4014 |
| PT (sec) | 15.0 (12.9-47.0) | 16.9 (14.0-62.4) | <0.0001 |
| PTT (sec) | 33 (19-88) | 36 (21-61) | 0.0002 |
| WBC count (x 10 ³ /μL) | 10.3 (0.4-277.3) | 42.0 (0.6-435.9) | <0.0001 |
| Peripheral blood blast cell (%) | 52 (0-95) | 72 (2.1-96) | 0.0012 |
| Platelet count (x 10 ³ /μL) | 66.4 (3.4-862.4) | 30.5 (5.7-132.8) | <0.0001 |
| Creatinine (mg/dL) | 0.9 (0.4-3.2) | 1.1 (0.5-3.0) | 0.0343 |
| Hemoglobin (g/dL) | 9.0 (2.9-15.1) | 8.7 (3.4-12.8) | 0.3687 |
| LDH (Unit/L) | 360 (109-3,594) | 593.5 (131-5,469) | <0.0001 |
| Bleeding (n, %) | 14 (8.6) | 15 (18.1) | 0.0373 |
| VTE (n, %) | 17 (10.5) | 12 (14.5) | 0.4054 |

Abbreviations: cfDNA, cell-free DNA; EVTF, extracellular vesicle tissue factor; H3Cit-DNA, citrullinated histone H3-DNA; LDH, lactate dehydrogenase; PAI-1, plasminogen activator inhibitor-1; PAP, plasmin-antiplasmin complex; PS+EVs, phosphatidylserine-positive extracellular vesicles; PT, prothrombin time; PTT, partial thromboplastin time; tPA, tissue plasminogen activator; VTE, venous thromboembolism; WBC, white blood cell

Supplementary Table 5. Comparisons between ALL patients with and without overt DIC.

| Characteristics | No-DIC (n=42) [median (range)] | Overt DIC (n=34) [median (range)] | P value |
|-----------------------------------|-----------------------------------|--------------------------------------|-------------------|
| EVTF activity (pg/mL) | 0.7 (0-37.5) | 0.5 (0-52.4) | 0.1064 |
| PS+EVs (nM) | 57.7 (2.7-123.2) | 36.3 (4.5-132.4) | 0.0476 |
| cfDNA (ng/mL) | 1,593 (767.4-22,157) | 1,677 (116.4-29,325) | 0.8407 |
| H3Cit-DNA complex (ng/mL) | 18.9 (0-240.1) | 19.7 (0-1,607) | 0.7649 |
| PAP (ng/mL) | 3,563 (125.4-60,381) | 7677 (561.5-115,720) | 0.0007 |
| tPA (ng/mL) | 0.5 (0-7.5) | 0.5 (0-2.4) | 0.3581 |
| PAI-1 (U/mL) | 10.0 (1.4-57.7) | 8.8 (0.4-69.6) | 0.3103 |
| D-dimer (ng/mL) | 1,045 (233-11,918) | 1,970 (566-16,414) | 0.0024 |
| Fibrinogen (mg/dL) | 401.5 (170.0-856.0) | 374.0 (184.0-687.0) | 0.5694 |
| PT (sec) | 14.4 (12.7-19.2) | 15.0 (12.8-21.6) | 0.0963 |
| PTT (sec) | 32 (24-40) | 33 (25-43) | 0.2146 |
| WBC count (x 10 ³ /μL) | 18.3 (0.7-204.6) | 11.7 (0.1-357.0) | 0.3425 |
| Peripheral blood blast cell (%) | 60.5 (1.6-94) | 64 (2.1-97) | 0.8666 |
| Platelet (x 10 ³ /μL) | 80.0 (12.6-377.3) | 23.8 (7.9-97.9) | <0.0001 |
| Creatinine (mg/dL) | 0.9 (0.4-2.1) | 0.9 (0.4-2.2) | 0.7363 |
| Hemoglobin (g/dL) | 9.5 (6.6-17.9) | 8.1 (4.6-11.7) | 0.0002 |
| LDH (Unit/L) | 481 (119-2,563) | 476.5 (123-6,374) | 0.6532 |
| Bleeding (n, %) | 0 (0) | 3 (8.8) | 0.0851 |
| VTE (n, %) | 3 (7.1) | 1 (2.9) | 0.6235 |

Abbreviations: cfDNA, cell-free DNA; EVTF, extracellular vesicle tissue factor; H3Cit-DNA, citrullinated histone H3-DNA; LDH, lactate dehydrogenase; PAI-1, plasminogen activator inhibitor-1; PAP, plasmin-antiplasmin complex; PS+EVs, phosphatidylserine-positive extracellular vesicles; PT, prothrombin time; PTT, partial thromboplastin time; tPA, tissue plasminogen activator; VTE, venous thromboembolism; WBC, white blood cell

Supplementary Table 6. Characteristics of acute leukemia patients with and without bleeding.

| Variable | No Bleeding (n=317) | Bleeding (n=41) | P value |
|---|---------------------|----------------------|--------------|
| Age at Diagnosis [median, (range)] | 59 (19-89) | 57 (30-75) | 0.841 |
| Sex (n, %) | | | |
| Male | 175 (56.1) | 28 (60.9) | 0.541 |
| Race (n, %) | | | |
| Non-Hispanic White | 232 (74.4) | 32 (69.6) | 0.502 |
| Black | 70 (22.4) | 11 (23.9) | |
| Other/Hispanic or Latino | 10 (3.2) | 3 (6.5) | |
| Body mass index (n, %) | 31 (7.4) | 30.1 (8.1) | 0.295 |
| Parameters [median (range)] | | | |
| EVTF activity (pg/mL) | 1.1 (0-695.6) | 1.9 (0-149.5) | 0.111 |
| PS+EVs (nM) | 54.6 (0-939.4) | 49.9 (4.5-357.2) | 0.375 |
| cfDNA (ng/mL) | 1,226 (116-29,325) | 1,341 (463-14,766) | 0.124 |
| H3Cit-DNA complex (ng/mL) | 50(0-934) | 22 (0-436) | 0.141 |
| PAP (ng/mL) | 5,014 (24-115,720) | 6,251 (1,181-43,539) | 0.091 |
| tPA (ng/mL) | 0.7 (0-38.8) | 1.4 (0-12.6) | 0.476 |
| PAI-1 (U/mL) | 9.1 (0.4-335.4) | 9.5 (0.2-87.7) | 0.208 |
| D-dimer (ng/mL) | 1,288 (135-20,000) | 2,182 (212-20,000) | 0.039 |
| Fibrinogen (mg/dL) | 421 (60-1,101) | 441 (60-722) | 0.382 |
| PT (sec) | 15.1 (12.7-62.4) | 16.0 (13.0-27.0) | 0.027 |
| PTT (sec) | 33 (19-200) | 33 (24-51) | 0.807 |
| WBC count (x 10 ³ /μL) | 12.1 (0.1-435.9) | 19.0 (0.9-136.0) | 0.148 |
| Peripheral blood blast cell (%) | 60 (0-97) | 70 (0-91) | 0.477 |
| Platelet (x 10 ³ /μL) | 47.7 (3.4-862.4) | 35.0 (11.1-285.2) | 0.114 |
| Creatinine (mg/dL) | 0.9 (0.4-3.2) | 0.8 (0.4-4.4) | 0.977 |
| Hemoglobin (g/dL) | 8.7 (2.9-17.9) | 8.5 (3.8-13.6) | 0.111 |
| LDH (Unit/L) | 404 (110-6,374) | 539 (109-4,714) | 0.006 |
| History of Bleeding (n, %) | | | |
| Yes | 4 (1.3%) | 1 (2.2%) | 1.261 |

Supplementary Table 6. Characteristics of acute leukemia patients with and without bleeding. (continued)

| Variable | No Bleeding (n=317) | Bleeding (n=41) | P value |
|-----------------------------|---------------------|-----------------|---------|
| Comorbidities (n, %) | | | |
| None | 114 (36.5) | 19 (41.3) | 0.523 |
| 1 | 78 (25) | 8 (17.4) | |
| ≥2 | 120 (38.5) | 19 (41.3) | |

Abbreviations: cfDNA, cell-free DNA; EVTF, extracellular vesicle tissue factor; H3Cit-DNA, citrullinated histone H3-DNA; LDH, lactate dehydrogenase; PAI-1, plasminogen activator inhibitor-1; PAP, plasmin-antiplasmin complex; PS+EVs, phosphatidylserine-positive extracellular vesicles; PT, prothrombin time; PTT, partial thromboplastin time; tPA, tissue plasminogen activator; WBC, white blood cell

Supplementary Table 7. Characteristics of acute leukemia patients with and without venous thromboembolism.

| Variable | No VTE (n=321) | VTE (n=37) | P value |
|--|--------------------|--------------------|--------------|
| Age at Diagnosis [median (range)] | 59 (19-89) | 54 (20-72) | 0.135 |
| Sex (n, %) | | | |
| Male | 185 (58.2) | 18 (45.0) | 0.113 |
| Race (n, %) | | | |
| Non-Hispanic White | 233 (73.3) | 31 (77.5) | 0.423 |
| Black | 72 (22.6) | 9 (22.5) | |
| Other/Hispanic or Latino | 13 (4.1) | 0 (0) | |
| Body mass index (n, %) | 30.9 (7.6) | 31.3 (6.3) | 0.426 |
| Parameters [median (range)] | | | |
| EVTF activity (pg/mL) | 1.1 (0-695.6) | 1.8 (0-334.2) | 0.156 |
| PS+EVs (nM) | 53.4 (0-939.4) | 60.1 (7.7-326) | 0.346 |
| cfDNA (ng/mL) | 1,263 (116-29,325) | 1,056 (430-6,114) | 0.111 |
| H3Cit-DNA complex (ng/mL) | 29 (0-1607) | 27 (0-404) | 0.419 |
| PAP (ng/mL) | 5,445 (24-115,720) | 4,288 (133-83,099) | 0.123 |
| tPA (ng/mL) | 0.8 (0-38.8) | 0.2 (0-12.6) | 0.067 |
| PAI-1 (U/mL) | 8.3 (0.2-335.4) | 16.7 (2.6-71.6) | 0.002 |
| D-dimer (ng/mL) | 1,383 (135-20,000) | 1,154 (233-20,000) | 0.943 |
| Fibrinogen (mg/dL) | 427 (60-1,100) | 378 (98-882) | 0.192 |
| PT (sec) | 15.2 (12.7-62.4) | 15.0 (13.6-24.6) | 0.43 |
| PTT (sec) | 33 (19-200) | 32 (24-50) | 0.975 |
| WBC count (x 10 ³ /μL) | 13.2 (0.1-358.1) | 18.3 (0.9-435.9) | 0.168 |
| Peripheral blood blast cell (%) | 60 (0-97) | 57 (6-96) | 0.884 |
| Platelet (x 10 ³ /μL) | 46 (3-862) | 41 (10-353) | 0.695 |
| Creatinine (mg/dL) | 0.9 (0.4-4.4) | 0.9 (0.5-1.8) | 0.589 |
| Hemoglobin (g/L) | 8.6 (2.9-17.9) | 9.0 (3.6-12.8) | 0.692 |
| LDH (Unit/L) | 424 (109-6,374) | 401 (110-5,469) | 0.965 |
| History of VTE (n, %) | | | |
| Yes | 14 (4.4%) | 3 (7.5%) | 0.385 |

Supplementary Table 7. Characteristics of acute leukemia patients with and without venous thromboembolism. (continued)

| Variable | No VTE (n=321) | VTE (n=37) | P value |
|-----------------------------|----------------|------------|---------|
| Comorbidities (n, %) | | | |
| None | 117 (36.8) | 16 (40.0) | 0.867 |
| 1 | 76 (23.9) | 10 (25.0) | |
| ≥2 | 125 (39.3) | 14 (35.0) | |

Abbreviations: cfDNA, cell-free DNA; EVTF, extracellular vesicle tissue factor; H3Cit-DNA, citrullinated histone H3-DNA; LDH, lactate dehydrogenase; PAI-1, plasminogen activator inhibitor-1; PAP, plasmin-antiplasmin complex; PS+EVs, phosphatidylserine-positive extracellular vesicles; PT, prothrombin time; PTT, partial thromboplastin time; tPA, tissue plasminogen activator; VTE, venous thromboembolism; WBC, white blood cell

Supplementary Table 8. Biomarkers associated with bleeding and VTE risk in non-APL AML.

| Biomarker | Bleeding# | | VTE* | |
|-----------------------------|---------------------------|--------------|----------------------------|--------------|
| | HR (95% CI) | p-value | HR (95% CI) | p-value |
| EVTF activity | 2.35 (0.98 - 5.66) | 0.057 | 1.27 (0.58 - 2.77) | 0.546 |
| PS + EVs | 1.25 (0.61 - 2.56) | 0.534 | 0.89 (0.43 - 1.85) | 0.758 |
| cfDNA | 1.99 (0.97 - 4.07) | 0.061 | 0.55 (0.28 - 1.08) | 0.081 |
| H3Cit-DNA complexes | 0.76 (0.40 - 1.46) | 0.414 | 0.54 (0.27 - 1.09) | 0.084 |
| PAP | 1.30 (0.64 - 2.62) | 0.470 | 0.84 (0.41 - 1.70) | 0.623 |
| tPA | 0.88 (0.42 - 1.82) | 0.726 | 0.47 (0.24 - 0.93) | 0.029 |
| PAI-1 | 1.32 (0.65 - 2.66) | 0.444 | 4.18 (1.47 - 11.87) | 0.007 |
| D-dimer | 1.32 (0.65 - 2.68) | 0.435 | 1.01 (0.50 - 2.06) | 0.979 |
| Fibrinogen | 0.66 (0.34 - 1.28) | 0.217 | 0.74 (0.37 - 1.49) | 0.402 |
| PT | 1.87 (0.85 - 4.13) | 0.120 | 1.55 (0.67 - 3.56) | 0.306 |
| PTT | 0.66 (0.34 - 1.29) | 0.226 | 1.35 (0.61 - 3.00) | 0.454 |
| WBC count | 2.42 (1.04 - 5.62) | 0.041 | 0.94 (0.46 - 1.89) | 0.857 |
| Peripheral blood blast cell | 1.08 (0.54 - 2.17) | 0.827 | 0.97 (0.45 - 2.08) | 0.928 |
| Platelet count | 0.56 (0.29 - 1.09) | 0.086 | 0.75 (0.37 - 1.50) | 0.411 |
| Creatinine | 1.14 (0.49 - 2.63) | 0.762 | 1.10 (0.50 - 2.43) | 0.805 |
| Hemoglobin | 0.72 (0.38 - 1.39) | 0.330 | 1.44 (0.67 - 3.10) | 0.353 |
| LDH | 3.50 (1.34 - 9.17) | 0.011 | 1.08 (0.52 - 2.22) | 0.842 |

Multivariable model was adjusted for age, sex, race/ethnicity,

*Multivariable model was adjusted for age, sex, race/ethnicity, body mass index, history of venous thromboembolism and comorbidities.

Abbreviations: cfDNA, cell-free DNA; EVTF, extracellular vesicle tissue factor; H3Cit-DNA, citrullinated histone H3-DNA; LDH, lactate dehydrogenase; PAI-1, plasminogen activator inhibitor-1; PAP, plasmin-antiplasmin complex; PS+EVs, phosphatidylserine-positive extracellular vesicles; PT, prothrombin time; PTT, partial thromboplastin time; tPA, tissue plasminogen activator; WBC, white blood cell; 95% CI, 95% confidence interval

Supplementary Table 9. Biomarkers associated with intracranial bleeding in patients with acute leukemia

| Biomarker | Comparison | Univariable | |
|-----------------------------|-----------------------|----------------------|---------------|
| | | HR (95% CI) | p-value |
| EVTF activity | Tertile 2 and 3 vs. 1 | 6.16 (0.82 - 46.34) | 0.0774 |
| PS + EVs | Tertile 2 and 3 vs. 1 | 0.82 (0.26 - 2.54) | 0.7259 |
| cfDNA | Tertile 2 and 3 vs. 1 | 2.62 (0.58 - 11.88) | 0.2114 |
| H3Cit-DNA complexes | Tertile 2 and 3 vs. 1 | 1.11 (0.33 - 3.75) | 0.8670 |
| PAP | Tertile 2 and 3 vs. 1 | 0.93 (0.28 - 3.06) | 0.9063 |
| tPA | Tertile 2 and 3 vs. 1 | 0.29 (0.09 - 0.90) | 0.0318 |
| PAI-1 | Tertile 2 and 3 vs. 1 | 0.73 (0.24 - 2.28) | 0.5930 |
| D-dimer | Tertile 2 and 3 vs. 1 | 2.56 (0.58 - 11.40) | 0.2171 |
| Fibrinogen | Tertile 2 and 3 vs. 1 | 0.27 (0.09 - 0.84) | 0.0234 |
| PT | Tertile 2 and 3 vs. 1 | 1.67 (0.37 - 7.42) | 0.5023 |
| PTT | Tertile 2 and 3 vs. 1 | 0.81 (0.25 - 2.69) | 0.7357 |
| WBC count | Tertile 2 and 3 vs. 1 | 1.92 (0.43 - 8.64) | 0.3931 |
| Peripheral blood blast cell | Tertile 2 and 3 vs. 1 | 3.90 (0.51 - 29.97) | 0.1912 |
| Platelet count | Tertile 2 and 3 vs. 1 | 0.85 (0.27 - 2.63) | 0.7729 |
| Creatinine | Tertile 2 and 3 vs. 1 | 3.45 (0.45 - 26.48) | 0.2330 |
| Hemoglobin | Tertile 2 and 3 vs. 1 | 0.55 (0.18 - 1.67) | 0.2875 |
| LDH | Tertile 2 and 3 vs. 1 | 2.14 (0.48 - 9.61) | 0.3212 |

Abbreviations: cfDNA, cell-free DNA; EVTF, extracellular vesicle tissue factor; H3Cit-DNA, citrullinated histone H3-DNA; LDH, lactate dehydrogenase; PAI-1, plasminogen activator inhibitor-1; PAP, plasmin-antiplasmin complex; PS+EVs, phosphatidylserine-positive extracellular vesicles; PT, prothrombin time; PTT, partial thromboplastin time; tPA, tissue plasminogen activator; WBC, white blood cell; 95% CI, 95% confidence interval