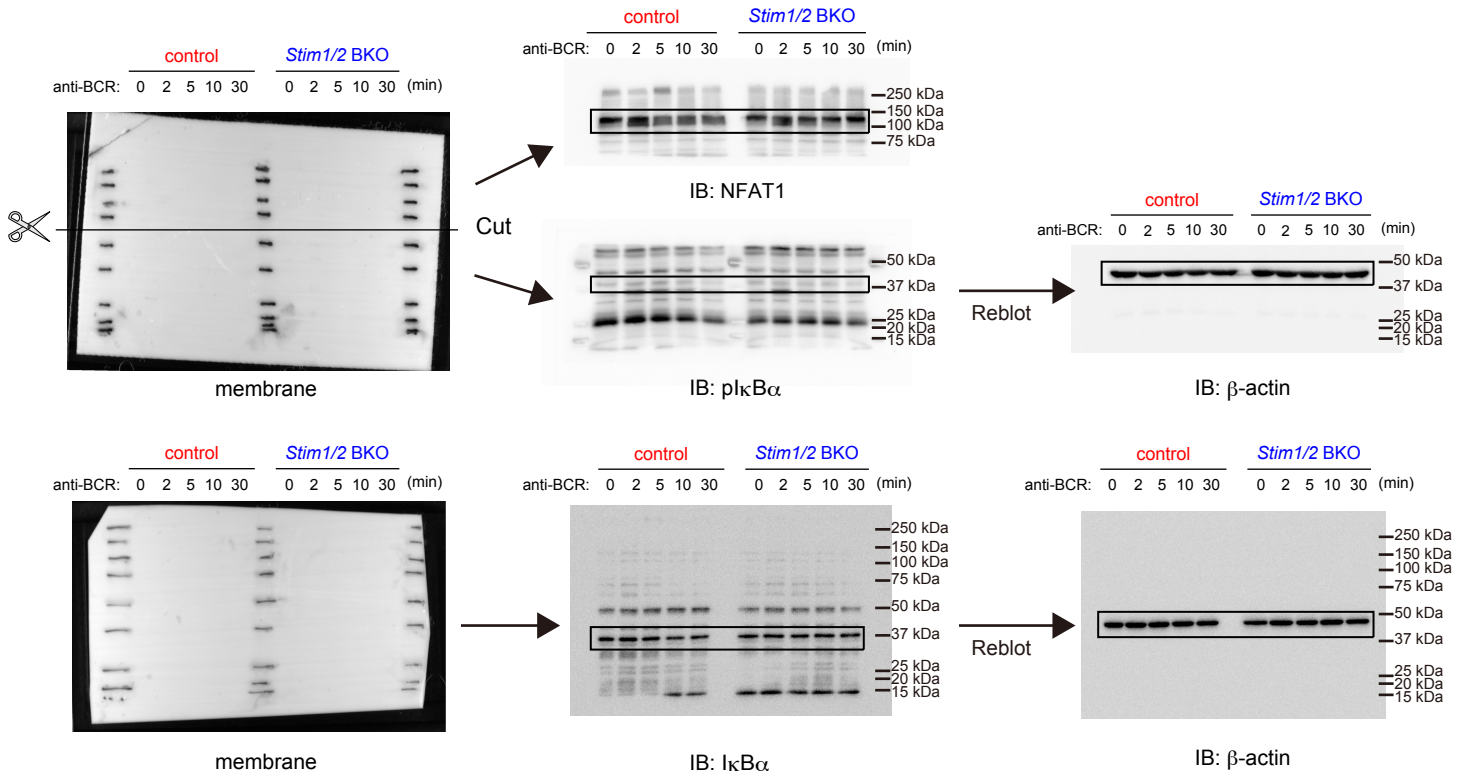


**Source data Figure 6A**



**Source data Fig.6A:**

Obtained iGB cells from control and Stim1/2 BKO were stimulated with 10  $\mu$ g/ml anti-IgM and anti-IgG to indicated time points.

Full Western blotting of NFAT1 (inactive form 140 kDa), phosphorylated IκBα (p-IκBα) (40 kDa) and total IκBα (39 kDa) were performed. β-actin (43 kDa) was assessed after reblotting the same membrane as a loading control.

The area cropped with a box were shown Figure 6A.