

# Toward parallel intelligence: An interdisciplinary solution for complex systems

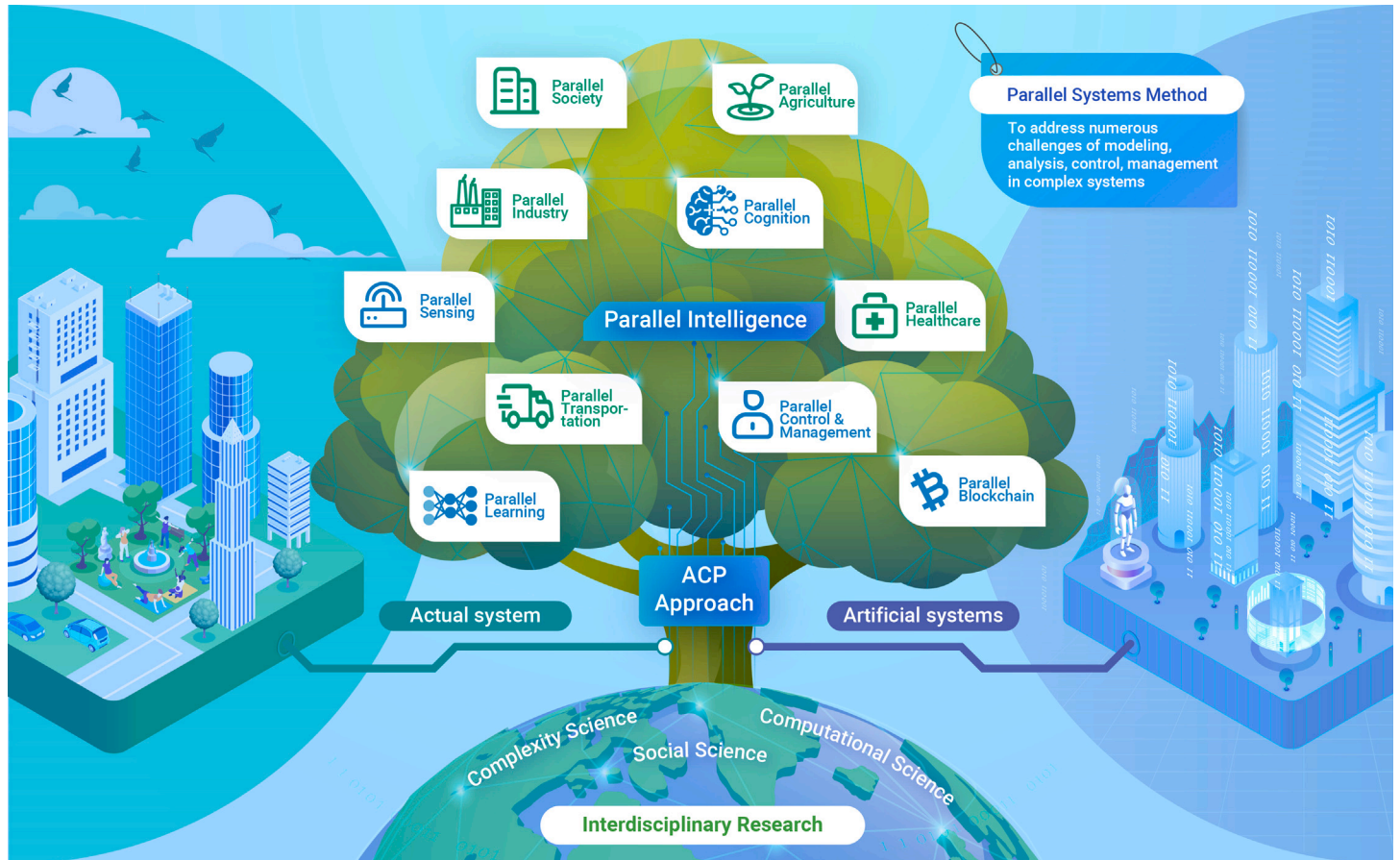
Yong Zhao,<sup>1,7</sup> Zhengqiu Zhu,<sup>1,7</sup> Bin Chen,<sup>1,2,7</sup> Sihang Qiu,<sup>1,7,\*</sup> Jincai Huang,<sup>1,2,\*</sup> Xin Lu,<sup>1,\*</sup> Weiyi Yang,<sup>1</sup> Chuan Ai,<sup>1</sup> Kuihua Huang,<sup>1,2</sup> Cheng He,<sup>3,4</sup> Yucheng Jin,<sup>5</sup> Zhong Liu,<sup>1,2</sup> and Fei-Yue Wang<sup>6</sup>

\*Correspondence: qiusihang11@nudt.edu.cn (S.Q.); huangjincai@nudt.edu.cn (J.H.); xin.lu.lab@outlook.com (X.L.)

Received: June 5, 2023; Accepted: October 3, 2023; Published Online: October 5, 2023; <https://doi.org/10.1016/j.xinn.2023.100521>

© 2023 The Authors. This is an open access article under the CC BY-NC-ND license (<http://creativecommons.org/licenses/by-nc-nd/4.0/>).

## GRAPHICAL ABSTRACT



## PUBLIC SUMMARY

- Interdisciplinary research stimulates the development of parallel systems method.
- ACP approach is a technical foundation to address challenges in complex systems.
- Parallel intelligence is objective for a better understanding of complex systems.
- Various parallel technologies and applications are major accomplishments.



# Toward parallel intelligence: An interdisciplinary solution for complex systems

Yong Zhao,<sup>1,7</sup> Zhengqiu Zhu,<sup>1,7</sup> Bin Chen,<sup>1,2,7</sup> Sihang Qiu,<sup>1,7,\*</sup> Jincal Huang,<sup>1,2,\*</sup> Xin Lu,<sup>1,\*</sup> Weiyi Yang,<sup>1</sup> Chuan Ai,<sup>1</sup> Kuihua Huang,<sup>1,2</sup> Cheng He,<sup>3,4</sup> Yucheng Jin,<sup>5</sup> Zhong Liu,<sup>1,2</sup> and Fei-Yue Wang<sup>6</sup>

<sup>1</sup>College of Systems Engineering, National University of Defense Technology, Changsha 410073, China

<sup>2</sup>Hunan Institute of Advanced Technology, Changsha 410073, China

<sup>3</sup>Shanghai Institute of Infectious Disease and Biosecurity, Shanghai 200032, China

<sup>4</sup>Institute of Epidemiology, Helmholtz Zentrum München – German Research Center for Environmental Health (GmbH), Neuherberg, Germany

<sup>5</sup>Department of Computer Science, Hong Kong Baptist University, Hong Kong, China

<sup>6</sup>State Key Laboratory for Management and Control of Complex Systems, Institute of Automation, Chinese Academy of Sciences, Beijing 100190, China

<sup>7</sup>These authors contributed equally

\*Correspondence: [qiusihang11@nudt.edu.cn](mailto:qiusihang11@nudt.edu.cn) (S.Q.); [huangjincal@nudt.edu.cn](mailto:huangjincal@nudt.edu.cn) (J.H.); [xin.lu.lab@outlook.com](mailto:xin.lu.lab@outlook.com) (X.L.)

Received: June 5, 2023; Accepted: October 3, 2023; Published Online: October 5, 2023; <https://doi.org/10.1016/j.xinn.2023.100521>

© 2023 The Authors. This is an open access article under the CC BY-NC-ND license (<http://creativecommons.org/licenses/by-nc-nd/4.0/>).

Citation: Zhao Y., Zhu Z., Chen B., et al., (2023). Toward parallel intelligence: An interdisciplinary solution for complex systems. *The Innovation* **4**(6), 100521.

**The growing complexity of real-world systems necessitates interdisciplinary solutions to confront myriad challenges in modeling, analysis, management, and control. To meet these demands, the parallel systems method rooted in the artificial systems, computational experiments, and parallel execution (ACP) approach has been developed. The method cultivates a cycle termed parallel intelligence, which iteratively creates data, acquires knowledge, and refines the actual system. Over the past two decades, the parallel systems method has continuously woven advanced knowledge and technologies from various disciplines, offering versatile interdisciplinary solutions for complex systems across diverse fields. This review explores the origins and fundamental concepts of the parallel systems method, showcasing its accomplishments as a diverse array of parallel technologies and applications while also prognosticating potential challenges. We posit that this method will considerably augment sustainable development while enhancing interdisciplinary communication and cooperation.**

## INTRODUCTION

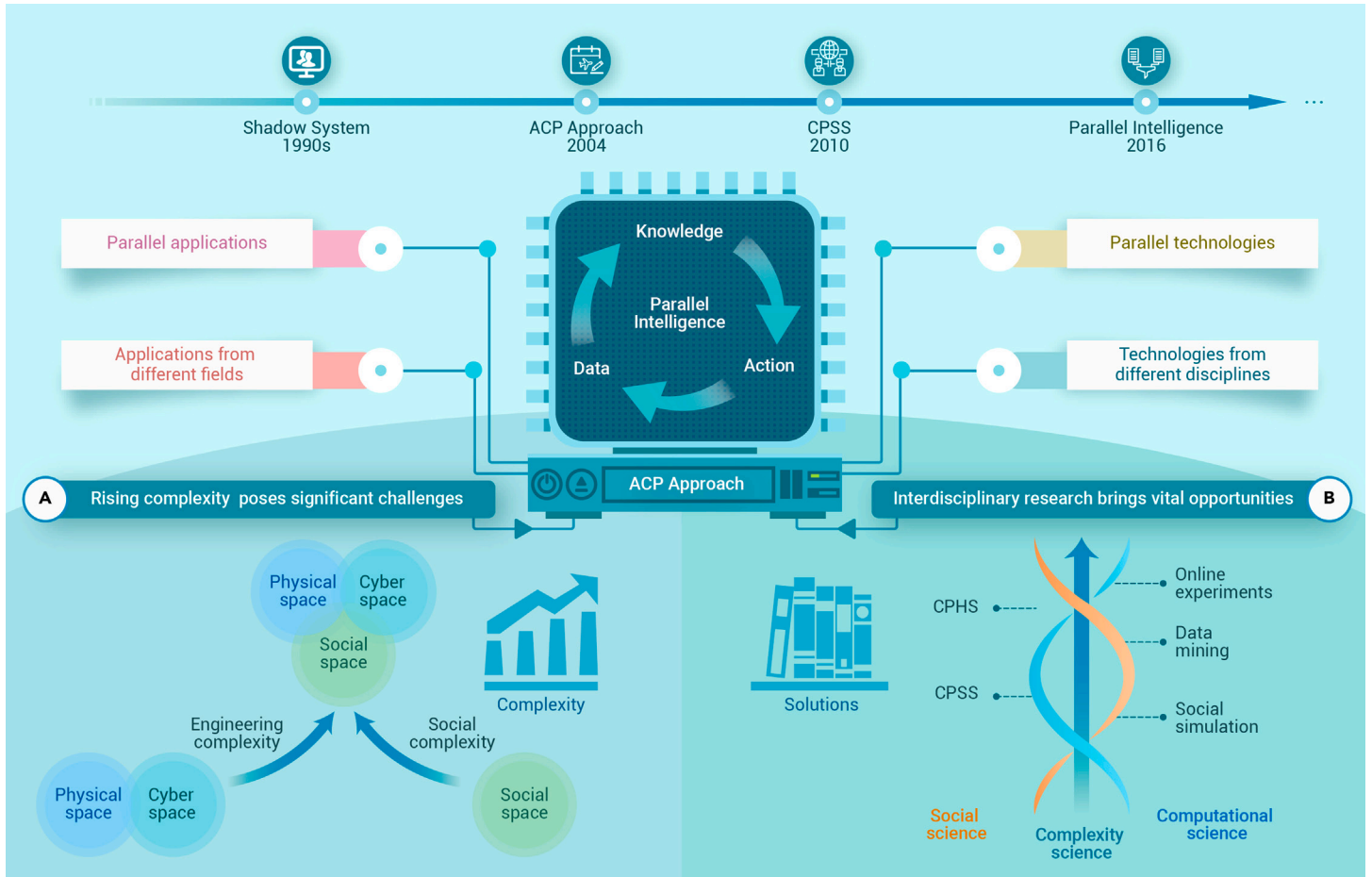
Stephen Hawking's prediction that the twenty-first century would be a "century of complexity"<sup>1</sup> has been substantiated over the last two decades. Real-world complex systems, such as those in engineering and social systems, manifest remarkable complexities. These include non-linearity, randomness, networked coupling, collective dynamics, hierarchy, and emergence, all of which contribute to substantial uncertainty and unpredictability in managing and controlling these systems. This complexity can be partly attributed to advances in information and communications technology (ICT), enabling the Internet of Everything.<sup>2</sup> Such extensive connectivity promotes the growth of complex systems with larger scales, more intricate structures, and nonlinear interactions between elements of varying magnitudes across different domains. Examples include social media and other cyber applications, physical space's Internet of Things (IoT) nodes, and heterogeneous individuals in social space.<sup>3</sup> The cross-domain interactions enable the integration of cyber, physical, and social spaces in complex systems,<sup>4</sup> thereby unifying the dual complexity of social and engineering (or technical) aspects into a single system. This heightens the challenges in complex systems concerning modeling, analysis, management, and control. As a result, tackling these issues using the knowledge and technology of a single discipline is a daunting task. To address the increasing complexity of systems, interdisciplinary research has become essential, combining knowledge and technologies from multiple disciplines to provide a comprehensive analysis and understanding.<sup>5</sup> For instance, various interdisciplinary analytical methods, such as social simulation,<sup>6</sup> data mining,<sup>7</sup> and online experiments,<sup>8</sup> have been developed to explore the complexity of systems from diverse perspectives. Additionally, interdisciplinary research paradigms, such as cyber-physical-social systems (CPSSs)<sup>9</sup> or cyber-physical human systems (CPHSs),<sup>10</sup> offer fundamental frameworks for modeling and analyzing systems with the dual complexities of engineering and social aspects. To address the challenges posed by the increasing complexity of real-world systems and drawing inspirations from the burgeoning interdisciplinary research, the artificial systems, computational experiments, and parallel execution (ACP) approach was

proposed in 2004.<sup>11</sup> This resulted in the creation of a novel method for complex systems studies: the parallel systems method. Over the past two decades, this method has been continuously evolving to pursue its objectives of achieving parallel intelligence. The parallel systems method has now emerged as a promising interdisciplinary solution for complex systems, enhancing people's understanding of such systems.<sup>12</sup>

The method of parallel systems discussed in this review is distinct from parallel system or parallel computing in computational science. Unlike these latter concepts, which entail a system capable of executing multiple tasks or instructions simultaneously, the parallel systems method relates to composite systems made up of an actual system and one or more corresponding virtual artificial systems. The concept of digital twins,<sup>13</sup> which is akin to the parallel systems method, is an essential technology for translating actual systems in physical space to digital representations in cyber space. The parallel systems method conveys a broader meaning than digital twins, as it primarily targets complex systems that integrate additional human and social dimensions. In addition to the engineering complexity that stems from large-scale and multi-level systems, social complexity resulting from individual-level human psychology, behavior, and interaction comes into play. These factors create challenges in establishing precise models or conducting experimental investigations of complex systems. Recognizing these challenges, the parallel systems method does not aim for complete alignment between the internal mechanisms of artificial and actual systems. Instead, it conducts computational experiments on artificial systems to explore the possible behaviors of the actual system and then implements parallel execution to reconcile any behavioral differences between the two. The parallel execution involves two aspects: first, modifying the artificial systems to emulate the behavior of the actual system; second, steering the actual system toward desired outcomes using insights learned from artificial systems.

The parallel systems method represents an interdisciplinary solution that cohesively integrates theories, technologies, and applications across various disciplines. (1) In terms of theories, its interdisciplinary character stems from the amalgamation of multiple fields, such as social, computational, and complexity sciences. (2) In terms of technologies, the method consistently absorbs cutting-edge technologies from diverse disciplines, formulating corresponding parallel technologies to enhance its capacity for dealing with various aspects of complex systems. (3) In terms of applications, the method leverages parallel technologies and specialized domain knowledge to deploy diverse parallel applications in complex systems across various fields, effectively addressing challenges in modeling, analysis, control, and management.

In this review, we undertake a comprehensive examination of the parallel systems method's origin, highlighting its emergence as a response to the challenges posed by complex systems and the opportunities presented by interdisciplinary research. Moreover, we probe into the details of the method, explicating parallel intelligence as its objectives, the ACP approach as its technical foundation, and advanced parallel technologies. Supported by these technological advancements, we illustrate the implementation and applications of the method in five major fields. Finally, we discuss the challenges and perspectives of the parallel systems method.



**Figure 1. Advent of the parallel systems method presents a unique opportunity** (A) Convergence of cyber, physical, and social spaces introduces significant challenges for addressing various problems in complex systems. (B) Interdisciplinary research brings opportunities to address various problems in complex systems. Challenges and opportunities have led to the emergence of the parallel systems method, which can absorb advanced technologies from diverse disciplines. Consequently, various parallel technologies and applications are developed as solutions to complex systems from different fields.

## PARADIGM SHIFT FOR UNDERSTANDING COMPLEX SYSTEMS

In this section, we look into the origin of the parallel systems method and explain how it emerged while we have been gradually altering our understanding of complex systems.

### Increasing complexity of real-world systems

With advancements in scientific theories and technologies, our understanding of the complexities of various real-world systems has deepened significantly. Social systems are quintessential examples of complex systems; the emergence of complex collective behavior and social phenomena at the macro level results from nonlinear interactions among individuals at the micro level. This poses challenges for reductionist analysis and repeatable experimental analyses in social systems. Moreover, with the growing scale and integration of various engineering systems in the real world, the complexity of engineering systems continues to escalate. This complexity poses significant challenges for managing and controlling systems in transportation, energy, manufacturing, and other engineering fields. Nowadays, the integration of social and engineering systems has become an evident trend catalyzed by ICT. This trend is driven by the continuous convergence of cyber, physical, and social spaces,<sup>14</sup> simultaneously augmenting complexity for both social and engineering domains, as depicted in Figure 1A. Specifically, this is illustrated in two trends.

The first trend pertains to the socialization of engineering systems. In traditional engineering systems, modeling, operation, control, and optimization were considered independently from a technological perspective. However, with increasing concerns regarding safety, sustainability, resilience, eco-friendliness, and human welfare, it is now acknowledged that engineering systems cannot be viewed in isolation from human society.<sup>15</sup> For example, the status of workers in factories can affect production efficiency, cost, and quality<sup>16</sup>; production plan-

ning, manufacturing execution, and market demand are interdependent<sup>15,17</sup>; the state of transportation systems is closely related to social events and human activities.<sup>18–21</sup> Incorporating social and human factors throughout the lifespan of engineering systems is essential for ensuring their sustainability and providing efficient, safe services to society. Achieving this goal requires a more comprehensive understanding of the complex interplay between technical and social factors, along with the development of novel models and methodologies that account for this integration. In general, the socialization of engineering systems represents an important transition toward a more integrated and holistic approach to designing and managing our engineering systems.

Another trend is the engineering of social systems, facilitated by advanced ICT and the integration of ubiquitous sensing devices and IoT technology into human society. This has ushered us into the “big data” era, where abundant social signals can be leveraged to model, analyze, and operate social systems in a way similar to engineering systems. Concepts such as smart cities,<sup>22</sup> smart societies,<sup>23</sup> and urban computing<sup>24</sup> have flourished under this trend.

The escalating complexity of systems demands a broader perspective to consider more elements within systems, as well as more powerful tools to understand and analyze them. Consequently, interdisciplinary research has rapidly advanced by merging knowledge and techniques from different disciplines, opening new opportunities for tackling complex system problems. Among the various interdisciplinary research paths, the intersection of computational science and social science offers a range of research methods and paradigms for addressing challenges with both social and engineering complexity.<sup>25</sup>

### Burgeoning interdisciplinary field

The division of disciplines allows each discipline to focus on a closely related set of variables in the real world from its unique perspective.<sup>26</sup> This lets them

rapidly analyze and address problems of interest without becoming entangled in the complexity of actual systems. However, in the context of complex systems, variables that are usually separated across different disciplines also exhibit nonlinear connections. Thus, interdisciplinary approaches are needed to integrate knowledge and techniques from diverse disciplines, involving more nonlinear relationships (i.e., with squared terms or even higher powers) among a broader set of linked variables. Currently, no agreement exists on how to conduct interdisciplinary research. In the emerging interdisciplinary fields between social, computational, and complexity sciences, concepts such as social computing<sup>23,27</sup> and computational social science<sup>7,25</sup> have been proposed and witnessed substantial progress. We do not differentiate between these two concepts but rather discuss the two interdisciplinary paths from the perspectives of research methods and research paradigms, as illustrated in Figure 1B.

On the one hand, advanced computational models and techniques have been continuously integrated into the analysis of social systems, resulting in numerous interdisciplinary methods that can effectively analyze complex social systems. With advancements in complex adaptive theory and computer simulation methods, social simulation methods have emerged as viable means of studying complex social phenomena.<sup>28</sup> Agent-based modeling (ABM), a prominent social simulation method, employs a bottom-up approach to investigate emergent phenomena at the macro level resulting from interactions among heterogeneous agents at the micro level.<sup>6</sup> The development of ABM has facilitated the emergence of artificial societies,<sup>29</sup> which involve constructing digital society laboratories using ABM methods to evaluate policy effectiveness experimentally. Notable examples of artificial societies include SugarScape,<sup>30</sup> the artificial stock market,<sup>31</sup> and National Planning Scenario 1 (NPS1).<sup>32</sup> Besides social simulation, data mining methods focus on discovering knowledge about human dynamics,<sup>33</sup> poverty and wealth,<sup>34</sup> epidemics,<sup>35</sup> and other facets of social systems from large social datasets, offering new insights into social system analysis. Moreover, online experiment methods, enabled by Internet platforms, provide an extensive pool of samples for social systems experiments.<sup>8,36,37</sup> This approach alleviates the three-horned dilemma of generality-control-realism<sup>38</sup> and the challenges of reproducing results<sup>39</sup> in social science. Along with the aforementioned three methods, there exist advanced techniques that facilitate the investigation of social interaction on a micro level, such as virtual reality (VR)<sup>40</sup> and hyperscanning.<sup>41</sup>

On the other hand, social and human factors are consistently integrated into the operation of various actual systems, providing fundamental research paradigms that support the blending of cyber, physical, and social spaces. Since the 1980s, with the continuous development of embedded systems, concepts such as ubiquitous sensing and pervasive sensing have emerged.<sup>42</sup> These ideas focus on embedding various computing devices within physical space, resulting in a close coupling between computing and physical resources through cyber-physical systems (CPSs). With the growing prevalence of sensor-enabled smart devices and their tight connection to humans and society,<sup>9</sup> social space is gradually infiltrating CPSs, driving their evolution toward more generalized socialization. Subsequently, various research paradigms have been developed to integrate social and human factors into CPSs, including CPHSs,<sup>10</sup> human-cyber-physical systems (HCPSSs),<sup>43</sup> social-cyber-physical systems (SCPSs),<sup>44</sup> and cyber-physical-social systems (CPSSs).<sup>4</sup> Among these, CPSS is the most prominent, deeply integrating human, machine, and IoT resources to enable coordination among cyber, physical, and social spaces.<sup>14</sup> Nowadays, CPSS has become a foundational paradigm for studying systems that encompass both social and engineering complexity in areas such as transportation,<sup>45</sup> agriculture,<sup>17</sup> healthcare,<sup>46</sup> and other fields,<sup>47</sup> involving activities such as sensing,<sup>3,48–50</sup> computing,<sup>51</sup> producing,<sup>15</sup> and operating.<sup>52</sup>

### Parallel systems method with interdisciplinary nature

The increasing complexity of real-world systems poses numerous challenges, yet interdisciplinary studies have presented opportunities. In this context, the parallel systems method, inherently interdisciplinary, has emerged at the intersection of social and computational sciences, offering solutions to address the intricate social and engineering aspects of complex systems. The origin of the parallel systems method can be traced to the early 1990s when researchers were exploring open complex giant systems.<sup>53</sup> Its prototype was a "shadow system" designed for studying and evaluating a complex entity through its digital replicas.<sup>54</sup> In 2004, the ACP approach was introduced, marking the starting point

of studying the parallel systems method, and it soon became the technical foundation for a 20-year journey in supporting the implementation of the parallel systems method.<sup>11,55,56</sup> The formalization of CPSS in 2010 fundamentally shaped the solution form of ACP-based parallel systems, enhancing its applications in various fields.<sup>4,57</sup> As the research progressed, relevant studies appeared in a variety of fields, each interpreting and applying the parallel systems method in terms tailored to their unique perspectives. Researchers began to recognize that these studies need clear objectives and guidance. Therefore, in 2016, the concept of parallel intelligence<sup>58</sup> was proposed, providing a high-level encapsulation of the fundamental principles, guidelines, or methodologies of the parallel systems method.

When dealing with complex systems, the parallel system method adopts CPSS as its basic form to examine numerous elements in the system and construct artificial counterparts of these actual elements. Subsequently, computational experiments are conducted to explore complex interaction mechanisms between these elements and investigate potential behaviors of systems under different scenarios. Furthermore, the bidirectional interaction and coevolution of artificial and actual systems are facilitated through parallel execution. In applying the parallel systems method, it is imperative to assimilate domain knowledge from diverse disciplines to support activities such as modeling, computing, and executing. Supported by parallel intelligence, the ACP approach integrates various research methods such as simulation and data mining to form a more powerful intelligence for understanding complex systems. Parallel intelligence enables artificial systems to transform from system analyzers into data generators, overcoming challenges posed by modeling, experiments, and data defects.<sup>12</sup> Consequently, it enables the transition seamlessly from "small data" in the actual system to big data in artificial systems, and ultimately to "deep intelligence" in the solution by executing a continuous cycle of data, knowledge, and action between artificial and actual systems.<sup>59</sup>

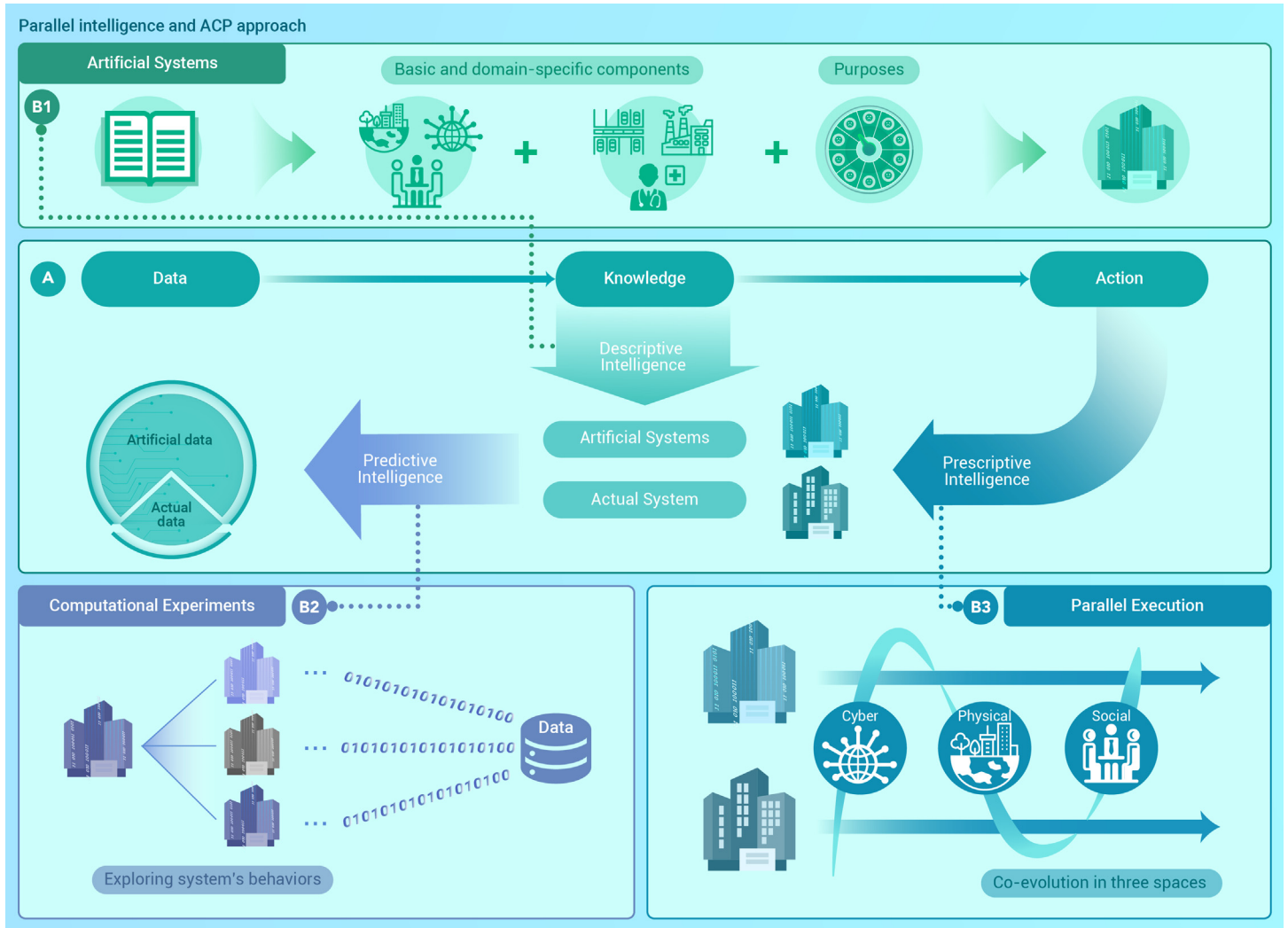
To comprehensively investigate the current state of development in the parallel systems method, we conducted a snowballing literature review, yielding 215 relevant publications. The details of our search and screening procedures are delineated in the supplemental information. Our analysis reveals that research on the parallel systems method is currently focused on two main areas: parallel technologies and their applications. The former, as the method's advanced technical extension, will be presented in section "parallel technologies"; the latter, as an interdisciplinary accomplishment of the method, is also discussed in section "parallel applications."

### PARALLEL SYSTEMS METHOD: AN INTERDISCIPLINARY SOLUTION

In this section, we probe into the details of the parallel systems method, as shown in Figure 2. The parallel intelligence, as the objective of the method, aims to improve our understanding of complex systems and the ACP approach serves as the technical foundation to realize the objective.

#### Parallel intelligence: The objective

The long-standing cycle of data, knowledge, and action in scientific research is such that knowledge extracted from data informs action, leading to the acquisition of more desired data, which in turn refines the knowledge with new data. Wiener described this cycle as "circular causality," paving the path for the study of modern cybernetics and computational intelligence.<sup>60</sup> However, within the context of complex systems, this cycle faces challenges, primarily in the transition from action to data. Due to the nonlinear interactions and complex emergence mechanisms among the numerous elements in complex systems, obtaining desired data through actions performed in the actual system can be problematic. Moreover, economic, ethical, and moral considerations often make actions related to war or disasters difficult to execute. To mitigate challenges in the transition from action to data, simulation methods use artificial models as substitutes for the actual system within the cycle. However, owing to the inherent uncertainty of complex systems, a model deviation between the actual system and its artificial counterpart often exists.<sup>59</sup> This deviation leads to differences between the data distribution generated by simulation models and that of real-world data, ultimately resulting in cycle failure. Data mining methods focus on one phase of the cycle: the extraction of knowledge from large datasets. Although these datasets may be extensive, they can suffer from shortcomings such as incomplete or inaccessible information.<sup>61</sup> Moreover, data mining mainly depends on correlations within the data, and this reliance can pose difficulties in



**Figure 2. Parallel systems method as an interdisciplinary solution** (A) The objective of the parallel systems method is to achieve parallel intelligence, which involves a novel cycle of data, knowledge, and action between actual and artificial systems. This cycle is facilitated by descriptive, prescriptive, and predictive intelligence and the ACP approach provides the technical foundation for the implementation of three types of intelligence. (B1) Artificial systems are composed of basic and domain-specific components, designed to fulfill specific purposes. (B2) Computational experiments are conducted to generate data on the system's behaviors across different scenarios. (B3) Parallel execution is leveraged to facilitate the coevolution of artificial and actual systems in cyber, physical, and social spaces.

exploring causality. These constraints can affect the reliability and validity of the knowledge extracted.

Parallel intelligence aims to establish a novel cycle of data, knowledge, and action, integrating research methods such as simulation and data mining. It employs three distinct kinds of intelligence—descriptive, predictive, and prescriptive—to enact this cycle. Akin to simulations, artificial systems can be constructed as digital counterparts of an actual system with the help of descriptive intelligence. Unlike a complete replication, parallel intelligence focuses on mirroring the actual system's behavior within its artificial constructs. This enables the artificial systems to generate data mimicking what the actual system might produce. Predictive intelligence explores potential behaviors of actual systems under different scenarios. By merging the generated big data with the actual system data, it forms comprehensive datasets. These datasets, in turn, facilitate the extraction or training of more reliable knowledge or intelligent models.<sup>62</sup> Serving as the final step, prescriptive intelligence aids in implementing actions based on the refreshed knowledge or intelligent models. It fosters the coevolution of artificial and actual systems toward desired outcomes, creating new data in the process.

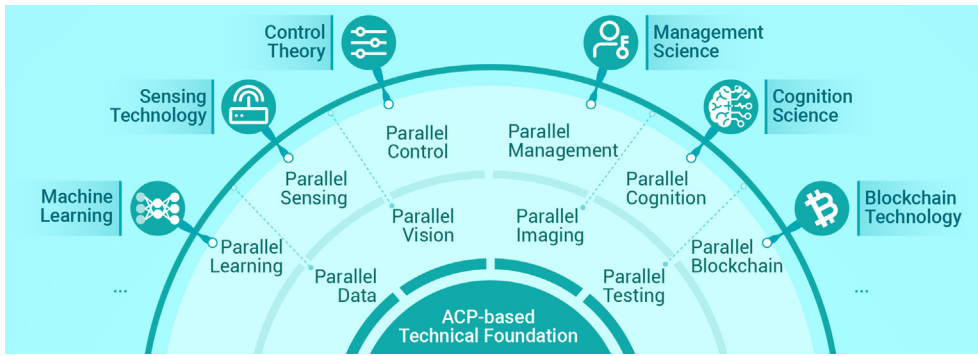
Given the innate uncertainty and dynamism of complex systems, universal solutions are not applicable. Artificial systems, in the context of parallel intelligence, are not replacements for the actual system but function alongside it.<sup>63</sup> They must coexist within the same cycle with the actual system, and this cycle must be carried out simultaneously between them. This ensures that artificial

systems can capture the dynamic characteristics of the actual system. Meanwhile, predictive intelligence should be engaged to probe as many possible behaviors of the actual system as possible, recognizing and navigating the inherent uncertainty of complex systems.

#### ACP approach: The technical foundation

The ACP approach comprises three components: artificial systems, computational experiments, and parallel execution. These represent the specific implementations of descriptive intelligence, predictive intelligence, and prescriptive intelligence, respectively.

**Artificial systems.** Artificial systems are usually constructed based on a diverse range of knowledge. By employing techniques such as knowledge automation<sup>64</sup> and knowledge representation,<sup>65</sup> software-defined objects, environments, and events are crafted as artificial components to mirror various elements in the actual system. These software-defined artificial components, which can be categorized into two groups, basic and domain specific, are then integrated to form cohesive software-defined artificial systems.<sup>66</sup> The basic components encapsulate more than just the physical aspects of the actual systems; they also encompass cyber and social dimensions, including structures such as artificial platforms<sup>67</sup> and artificial populations.<sup>67</sup> Besides, domain-specific components vary across various complex systems. For instance, artificial hospital systems include subcomponents such as artificial diagnosis, treatment, and nursing subsystems,<sup>62</sup> while artificial population



**Figure 3. Parallel technologies** Various parallel technologies are proposed by integrating advanced technologies from different disciplines into the ACP-based technical foundation.

systems comprise elements such as artificial cognition and human subsystems.<sup>67</sup> In the realm of agriculture, artificial systems are made up of components such as artificial genotypes, environments, crop growth, and farmer behavior subsystems.<sup>68</sup> Moreover, modeling methods manifest diversity across various fields. The ABM method has been widely employed to construct artificial systems, enabling each agent to engage in straightforward interactions. Complex network models are also widely used to characterize the complex relationships and interactions among agents in artificial systems.<sup>69</sup> In parallel vision research,<sup>70</sup> computer graphics and VR technologies are employed for constructing artificial scenarios and simulating diverse elements present in real-world physical spaces such as illumination, weather conditions, and camera configurations. Learning models further contribute to modeling human cognitive systems.<sup>71</sup> Moreover, knowledge graphs<sup>46</sup> and mathematical models<sup>72</sup> are leveraged in artificial healthcare and artificial industry systems, respectively. The recent emergence of large language models (LLMs), including models such as ChatGPT, offers exciting possibilities for constructing generative agents with human behavior in artificial systems.<sup>73</sup>

Furthermore, a single actual system can correlate to several artificial systems, each serving different purposes. For instance, distinct artificial traffic systems can be constructed to represent different facets such as historical traffic conditions, normal and average performances, optimal and ideal operations, as well as worst-case scenarios for disaster and emergency management.<sup>74</sup>

**Computational experiments.** Computational experiments can be conducted in three distinct modes, each serving a specific purpose. In the learning and training modes, the data generated from experiments are integrated with actual scenarios or cases. This fusion facilitates knowledge acquisition and the accumulation of experience for operators and managers in real-world systems. In the experiment and evaluation mode, computational experiments are performed more extensively and intensely to analyze and predict the behavior of the actual system under various scenarios. In the control and management modes, computational experiments are conducted to optimize control schemes or management plans, with consideration given to the differences between actual and artificial systems.

Xue et al.<sup>75</sup> presented a range of fundamental techniques for conducting computational experiments, encompassing the construction, design, analysis, and validation of experimental systems. These computational experiments vary in form across different studies. For instance, parallel testing has employed semantic diagram models to generate challenging testing tasks that bolster the autonomous capabilities of vehicles.<sup>76,77</sup> Learning models, such as generative adversarial networks (GANs), have been integrated with computational experiments in parallel learning, resulting in the creation of traffic data,<sup>78</sup> realistic images of rare driving scenes,<sup>79</sup> and control schemes for traffic engineers.<sup>80</sup> Recently, scenarios engineering has emerged as a technique to produce large volumes of scenario data in parallel systems, enhancing the training of reliable and trustworthy foundation models.<sup>81,82</sup>

**Parallel execution.** Parallel execution aims to facilitate collaborative and iterative optimization of both artificial and actual systems, utilizing insights from computational experiments. The techniques employed for achieving parallel execution differ among various spaces. In cyber space, parallel execution is commonly realized through the optimization of software, algorithms, and models, such as the various machine learning models used in parallel learning.<sup>83</sup> In the physical space, parallel execution can be achieved through the optimization of existing scheduling and control procedures in actual systems, such as

real-time economic generation dispatching and control in power systems,<sup>84</sup> or dynamic scheduling and operation control in high-speed railway systems.<sup>85</sup> In social space, parallel execution becomes more intricate, with past research employing methods such as information guidance or data-to-mind methods<sup>45</sup> strategies. Examples include distributing energy coupons or energy-saving information to incentivize power users<sup>86</sup> and influencing pedestrian path selection and evacuation behavior through strategic signage.<sup>87</sup>

Furthermore, it is crucial to implement corrections and updates to artificial systems. There is no universal solution for managing or controlling complex systems, as new problems, needs, and trends continually emerge. These must be dynamically integrated into artificial systems in real time. Consequently, optimized solutions can be derived from these artificial systems to steer the ongoing development and evolution of the actual system.

## PARALLEL TECHNOLOGIES

Built on the ACP-based technical foundation, the parallel systems method is constantly enriched through integration with cutting-edge technologies from various disciplines, leading to the emergence of novel technologies such as parallel learning, parallel blockchain, and parallel cognition, as shown in Figure 3. These hybrid technologies enhance the capabilities of the parallel systems method, enabling it to tackle complex problems. Concurrently, the growth of parallel technologies assists in overcoming intrinsic challenges associated with these technologies. To ensure conciseness, this section delves into five major parallel technologies, considering their overlapping and successive relationships (see [supplemental information](#) for details of the selection procedure).

### Parallel learning

Parallel learning, essentially a technical embodiment of parallel intelligence, has become a prominent parallel technology. Traditional machine learning methods grapple with issues such as inefficient exploration, poor generalization, and data scarcity, especially within the framework of complex systems.<sup>62</sup> Leveraging the ACP foundation, parallel learning enhances data augmentation, online knowledge updating, and efficient exploration of the action space. Such advancements enable the deployment of machine-learning-based solutions in analyzing and managing complex systems.<sup>88,89</sup> In parallel learning, advanced models such as transfer learning, predictive learning, deep learning, reinforcement learning, and GAN are utilized to generate diverse synthetic datasets.<sup>78</sup> These datasets, fused with actual system data, offer substantial training resources for the above models, culminating in more powerful and reliable intelligence, capable of providing precise and robust solutions for complex systems. Parallel learning found applications in areas such as traffic control,<sup>80,90,91</sup> traffic prediction,<sup>92,93</sup> and energy systems management,<sup>88,89</sup> further enhanced by parallel data.<sup>94,95</sup>

Furthermore, parallel learning has been combined with parallel vision<sup>70</sup> and parallel imaging<sup>96</sup> to generate photorealistic images and scene data, addressing challenges related to visual perception and understanding. The advantages of synthetic data are 2-fold. First, it tackles the issue of imbalanced data distribution. For instance, in autonomous driving,<sup>97</sup> current datasets mainly comprise normal driving scenarios, while rare events such as accidents are underrepresented, a phenomenon known as the long-tail effect.<sup>98</sup> Parallel learning techniques, such as SST-GAN<sup>79</sup> and LoTR,<sup>98,99</sup> are capable of generating a diverse array of scarce data to compensate for this deficiency.<sup>100,101</sup> Second, annotating large-scale data from real-world scenarios is cumbersome and labor intensive, often resulting in a limited range and scale of labeled datasets.<sup>102</sup> Parallel learning provides a solution by generating ample labeled data for various tasks, including object positioning, motion trajectory tracking, semantic segmentation, depth estimation, optical flow analysis, and other vision-related labels.<sup>70</sup>

The efficacy of parallel learning has been empirically validated, but the disparity between artificial and real data should not be disregarded.<sup>98</sup> Ongoing research into Sim2Real may offer solutions to this issue.<sup>103,104</sup> Besides, Miao et al.<sup>105</sup> have explored the interplay between parallel learning in the context of science for artificial intelligence (AI) and AI for science, reinforcing our discussion on the interdisciplinary essence of the parallel systems method.

### Parallel blockchain

Blockchain represents an innovative decentralized infrastructure and a distributed computing paradigm. However, it faces challenges such as security threats, block inflation, wasted computing resources, irrational competition, and other issues that hinder its progress. To mitigate these challenges, parallel blockchain<sup>106</sup> was introduced. This concept adds computational experiments and parallel decision-making functions to traditional blockchain operation, enabling the parallel interaction and coevolution of actual and artificial blockchains.<sup>107</sup> Using data encryption, timestamp distribution, distributed consensus, and economic incentives, parallel blockchain enables decentralized peer-to-peer transaction coordination and collaboration within a distributed system without the need for mutual trust between nodes. This provides a secure and trustworthy environment for the interaction of various elements within complex systems.<sup>108</sup>

Parallel blockchain enables the implementation of decentralized autonomous organization (DAO), a modern and effective organizational and managerial framework for navigating uncertain, diverse, and complex environments.<sup>109,110</sup> DAO can serve as a hub for integrating cyber, physical, and social spaces. It allows for seamless storage and analysis of cyber data on blockchain; facilitates the digitalization and registration of physical devices, assets, and entities as smart properties on blockchain; and ensures privacy-protected, fair, and reliable human-machine and human-human interactions through smart contracts recorded on blockchain.<sup>111,112</sup> Powered by parallel blockchain and DAO, numerous parallel applications have been developed in the fields of transportation,<sup>113</sup> healthcare,<sup>114</sup> and agriculture.<sup>115</sup>

### Parallel control and management

In a broad perspective, the primary objective of many parallel technologies is to enhance management and control, as the ACP-based technical foundation essentially builds upon adaptive control methods in complex systems.<sup>11</sup> In a narrow perspective, parallel control can be regarded as a data-driven computational control approach in the control field.<sup>116</sup> For instance, Song et al.<sup>117</sup> applied parallel control to distributed parameter systems, exploring various cases such as the vibration control of Longmen crane, cooperative control of multiagent systems, chemical process control of plug flow reactor, and the control of flexible beam system. To address optimal control issues in discrete-time time-varying nonlinear systems, parallel control was further combined with adaptive dynamic programming and heuristic dynamic programming techniques.<sup>118,119</sup> The self-learning-optimized parallel control method has been investigated to assess the theoretical performance of parallel control for the first time, laying a solid foundation for future research and expanding its application. This exploration also facilitates the advancement of interpretability in AI.<sup>12</sup> Traditional organizations and management typically follow a top-down pyramid structure, which can restrict innovation potential and interaction efficiency.<sup>110</sup> Bolstered by parallel blockchain and knowledge automation, parallel management offers a decentralized and autonomous solution for management that highlights features of simple intelligence, provable security, flexible scalability, and ecological harmony.<sup>120</sup> Parallel management targets not only physical organizations but also artificial or computational counterparts, as well as their mechanism for virtual-real interactions.<sup>121</sup>

### Parallel sensing

Sensing activities serve a pivotal function in bridging information transmission between artificial and actual systems. Traditional sensing, restricted by hardware and software constraints of physical sensors, can be limiting. To counteract these constraints, Shen et al.<sup>122</sup> proposed parallel sensing that redefines sensors as a combination of actual physical sensors and virtual software-defined sensors, using the parallel systems method to enhance their functionality. In parallel sensing, physical sensors operate at discrete time intervals to conserve energy, while virtual sensors function continuously to provide compensatory data. This method has been applied to parallel vision,<sup>70</sup> parallel point clouds,<sup>123</sup> and parallel light fields.<sup>124</sup> Beyond enhancing sensor performance, the crowdsensing cam-

paigns can also be optimized. Crowdsensing intelligence, a novel framework grounded in the parallel systems method, leverages the collective intelligence of heterogeneous sensing participants to gather data and information from CPSSs.<sup>48–50</sup> A parallel vehicular crowdsensing system has also been developed to produce high-fidelity data for various traffic scenarios, sensing tasks, and road networks to guide the optimization of sensing campaigns.<sup>57</sup>

### Parallel cognition

The investigation of parallel cognition represents a crucial stride toward exploring social dimensions through the ACP approach. Human cognition, with its complexity and uncertainty, has often been neglected or overly simplified in research. Cognitive science is conventionally interdisciplinary and primarily employs experimental, inductive, modeling, and validation paradigms. These may fall short in dealing with complex systems involving multiple individuals with substantial heterogeneity and dynamics. Moreover, ignoring human imperfections such as fatigue and faults can result in conflicts in decision making between humans and machines, or even severe accidents. Parallel cognition<sup>71</sup> was formulated as a computational approach to interpret, learn, predict, and prescribe individual behaviors under specific conditions in given tasks. A hybrid learning method, founded on psychological models and user behavioral data, was proposed to adaptively understand individual cognitive knowledge. The validation of parallel cognition was conducted on two types of complex systems: social group decision making in urban transportation and cognitive visual reasoning in human-in-the-loop systems. These studies demonstrate its effectiveness in fostering human-machine cooperation in complex engineering and social systems.<sup>67</sup> Although the current research on parallel cognition is relatively limited, its potential is evident. It offers a viable approach to delve deeply into social complexity and paves the way for the creation of more realistic and nuanced parallel systems.

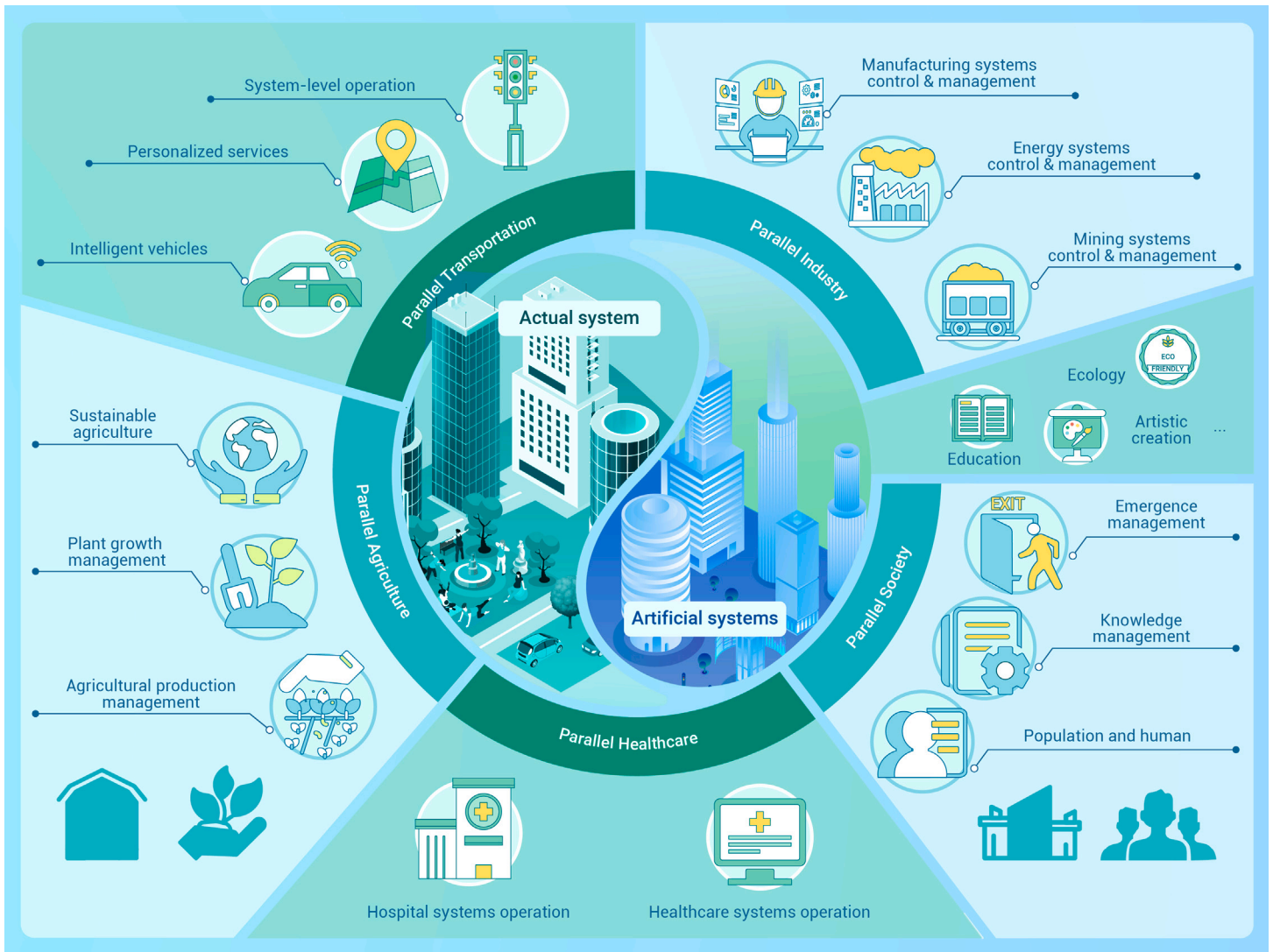
### PARALLEL APPLICATIONS

Leveraging technical foundations and parallel technologies, parallel applications in the basic form of CPSS have been successfully deployed across various domains such as transportation, healthcare, industry, agriculture, society, ecology,<sup>125</sup> education,<sup>126</sup> and artistic creation.<sup>47,127</sup> We mainly exhibit them in five domains as illustrated in Figure 4. Parallel applications aim to tackle the management and control challenges inherent in complex systems while simultaneously enhancing their efficiency and sustainability. Additionally, they provide personalized solutions for individual needs such as transportation services and medical diagnosis and treatment.

### Parallel transportation

As shown in Figure 5, parallel transportation emerged as one of the earliest fields of parallel application. The swift growth of modern cities has given rise to complex issues in contemporary intelligent transportation systems (ITSs), including congestion, pollution, and accidents. These challenges require the development of system-level management and control schemes for ITSs.<sup>74</sup> Integrating aspects such as traffic information collection, analysis, modeling, prediction, control management, and measurement feedback, parallel transportation management systems (PtMSs) offer a comprehensive solution. They are instrumental in evaluating ITS behavior under various scenarios,<sup>45,128–130</sup> enhancing traffic prediction<sup>78,94</sup> and control.<sup>131–133</sup> PtMS has been successfully deployed in cities such as Binzhou, Taicang, and Suzhou, China.<sup>129</sup> Sustainability within ITS has emerged as a pivotal focus,<sup>134</sup> leading to research on ACP-based energy-efficient schemes<sup>135</sup> and parallel emission regulatory frameworks.<sup>136</sup> Beyond system-level research, parallel transportation also extends personalized services, including parking guidance<sup>137</sup> and route planning.<sup>19</sup> Moreover, intelligent vehicles, seen as potential solutions to intricate problems in ITS, benefit from parallel technologies, such as parallel learning,<sup>79</sup> parallel vision,<sup>99</sup> and parallel testing.<sup>76,77</sup> This technological support has led to the development of applications such as parallel driving<sup>138–142</sup> and parallel vehicles<sup>143,144</sup> to enhance interactions between intelligent vehicles, human drivers, and the environment<sup>145</sup> as well as strengthen vehicle intelligence.<sup>146,147</sup>

The field of parallel transportation has amassed numerous accomplishments, both in cutting-edge techniques and practical projects. Moving forward, in addition to technical challenges, legal and ethical considerations will need to be addressed to pave the way for real-world implementation of applications such as parallel driving and PtMS.



**Figure 4. Implementation and applications** Various parallel applications have been developed to solve problems in complex systems from different domains.

### Parallel healthcare

To address the social, humanistic, and scientific challenges in healthcare, a new infrastructure known as parallel healthcare has emerged based on the ACP approach.<sup>52,148</sup> The two main areas of application lie in the operations of healthcare systems and hospital systems. Smart healthcare systems have played a crucial role in advancing modern medicine; however, their practical implementation still faces challenges, including inadequate cross-border collaboration among experts and insufficient personalized diagnoses and treatments. To address these issues, Wang et al.<sup>114</sup> proposed parallel healthcare systems that distill the synthesized data from both actual and artificial systems into precise knowledge or profound intelligence for individual-specific healthcare problems, using parallel technologies. Multiple parallel healthcare systems have been developed to collaborate with doctors in diverse fields, encompassing gout,<sup>149</sup> surgery,<sup>150,151</sup> hypertension,<sup>46</sup> ophthalmia,<sup>152</sup> and skin disease.<sup>153</sup>

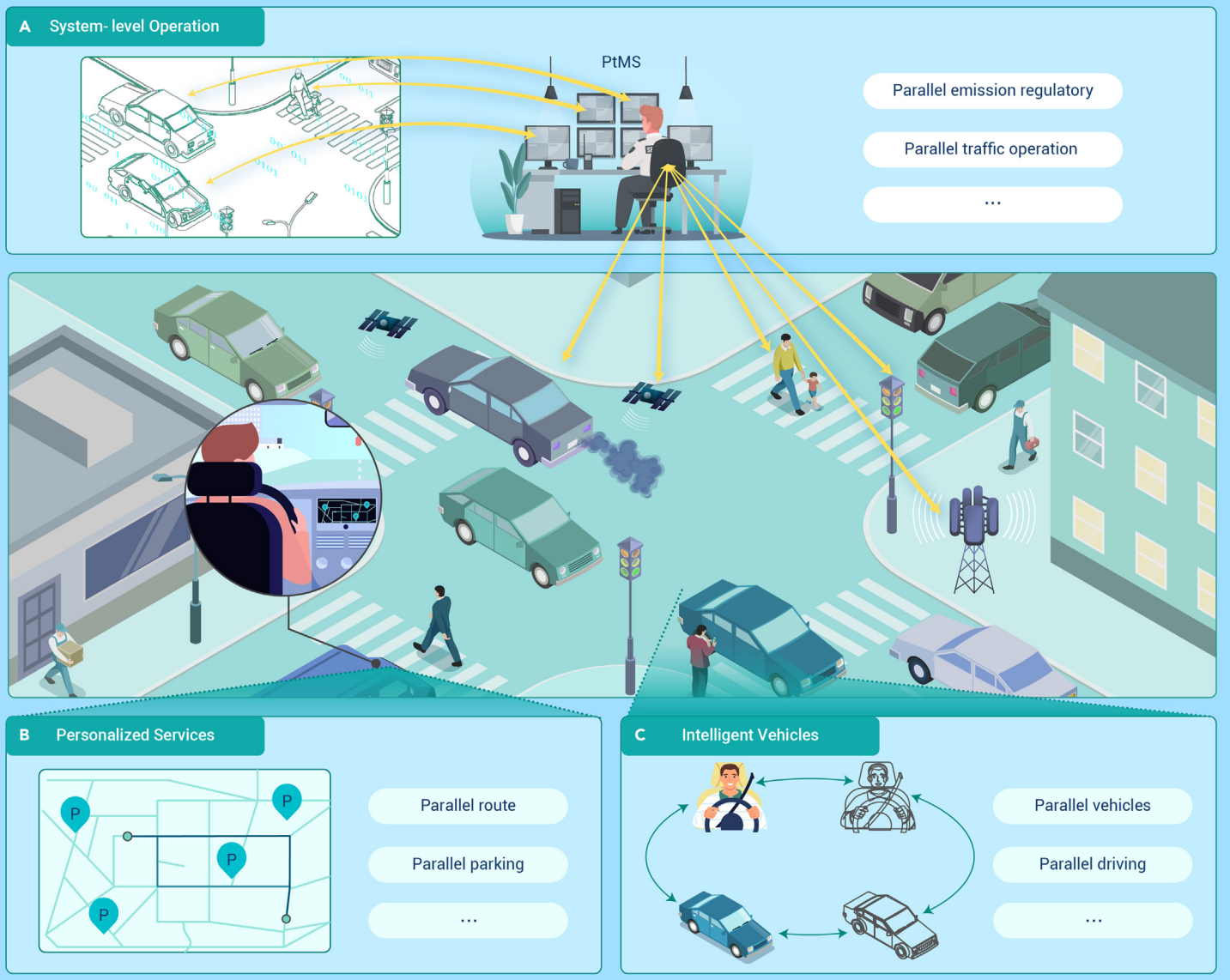
Furthermore, the parallel systems method serves as a guiding framework for developing the next generation of intelligent hospital operation systems.<sup>154</sup> A parallel hospital can be regarded as a digital representation of a hospital, encompassing hospital operators and all participants involved in medical activities.<sup>52</sup> This approach facilitates dynamic and rational scheduling or pre-allocation of hospital resources, thereby enhancing resource utilization and the quality of medical services. Supported by parallel blockchain and DAO, a parallel hospital can establish a federated ecology in the healthcare field by integrating resources from multiple medical institutions to improve overall system performance.<sup>52</sup> Furthermore, this research provides fundamental assurance for advancing remote healthcare and helps mitigate disparities in the allocation of medical resources.

Current research on parallel healthcare systems primarily relies on case studies and focuses on various specific diseases. Given the complexity of the human body, which consists of numerous systems, there is an imperative to develop comprehensive parallel healthcare systems in the future that encompass a wider range of physical and mental elements related to human health. To achieve a parallel hospital federation ecology, future studies must develop standards and norms to promote resource sharing among different institutions.

### Parallel industry

Within the CPSS framework, the parallel industry integrates traditional industrial systems, such as manufacturing, mining, and energy systems, with elements in the social space, including social demands, worker status, and user behavior.<sup>155,156</sup> This integration forges unprecedented opportunities for the effective management and control of industrial systems, simultaneously enhancing system reliability and operational efficiency and promoting sustainable development. Parallel manufacturing<sup>157</sup> employs knowledge automation to analyze and distill social demands from social intelligence for product research and production planning, facilitating a swift response to market shifts.<sup>15</sup> Furthermore, parallel workers can supplant human workers in performing most physical and mental tasks, thus achieving cost-effective, efficient, and zero-inventory manufacturing.<sup>16</sup> The parallel systems method is employed to enhance the dependability and operational efficiency of energy systems, including nuclear power plants,<sup>158</sup> microgrids,<sup>88</sup> and the energy Internet.<sup>159</sup> Additionally, parallel mining<sup>160,161</sup> has been implemented and deployed at over 20 mining sites throughout China, significantly boosting production efficiency and safety





**Figure 5. Parallel applications in parallel transportation** They are roughly divided into three related parts: (A) system-level operations, such as emission regulatory and traffic operation; (B) personalized services, including routing planning and parking guidance; and (C) intelligent vehicles designed for the implementation of autonomous driving.

standards in open-pit mines and fostering the mining industry's sustainable development.

Although the parallel industry has shown promising results in the aforementioned areas, particularly in parallel mining, the consideration of factors stemming from social space is still in its infancy and somewhat oversimplified. Further exploration must incorporate the intricacies of complex systems and delve into social and human factors more comprehensively.

**Parallel agriculture**

In light of the growing global population, agricultural systems face mounting pressures to produce enough food. Parallel agriculture aims to achieve sustainable agriculture with potential applications spanning all stages: pre-production tasks, such as scheduling, market and demand analysis, and plant optimization; inter-production tasks, such as planting management, environmental control, soil analysis, fertilization, spraying, irrigation, and the use of pesticides and herbicides; and post-production tasks, including harvest, storage, processing, transportation, sales, and logistics scheduling.<sup>68</sup> Currently, the parallel systems method is leveraged to enable precision management of plant growth.<sup>162</sup> Kang et al.<sup>17</sup> proposed an agricultural CPSS for agricultural production management services based on the ACP approach. The system integrates social and physical sensors, including wholesale market prices of agricultural products and environmental data from daylight greenhouses, to offer decision-making support for planting plans

through the ACP approach. This approach can improve economic efficiency while reducing labor and fertilizer wastage, thus promoting sustainable development.<sup>163</sup>

While the fundamental framework for parallel agriculture is in place, lingering challenges such as information asymmetry, data scarcity, and infrastructure inadequacy demand attention. Further case studies and empirical research are indispensable for propelling the successful implementation of parallel agriculture.

**Parallel society**

Empowered by advanced ICT, the swift spread of information and real-time interplay between online and offline environments has augmented the complexity of managing individuals and organizations within social systems.<sup>23</sup> Parallel societies utilize the ACP approach to establish society laboratories that offer decision-making support and wisdom for managing and controlling social systems. For instance, in social emergency management,<sup>164</sup> the parallel systems method has been employed to address public health crises<sup>165,166</sup> as well as emergency evacuations<sup>87,167–170</sup> across various scenarios. In human-machine hybrid CPSS, the parallel systems method has been employed to investigate human cognition, taking into account human heterogeneity and uncertainty through parallel humans and parallel populations.<sup>67,71</sup> Prototypes of parallel humans and populations have been implemented for social security, social group

decision making, and advancing human-in-the-loop systems in complex engineering. Furthermore, parallel management has been applied to organize, manage, and measure knowledge work, reflecting the transition from manual labor to knowledge work in future intelligent societies.<sup>120,171,172</sup>

Due to the intricate nature of social systems, a majority of the current research on parallel society is predominantly case based. Moreover, the authenticity of these applications warrants further scrutiny. The future development of parallel society applications could potentially be facilitated through collaborative data-sharing mechanisms with governments and companies, enabling validation and verification in a data-driven manner.

## CHALLENGES AND PERSPECTIVES

At present, the parallel systems method faces multifaceted challenges, including internal challenges related to its existing theory and technologies, external challenges posed by advanced AI, and persistent ethical and legal challenges. Meanwhile, we can anticipate the potential of this method to promote sustainable development and interdisciplinary communication and cooperation.

### Challenges

The parallel systems method is likely to encounter three major challenges: internal challenges tied to the implementation of the ACP approach, external challenges driven by the development of AI, and ever-present ethical and legal challenges that always exist in human societies.

**Internal challenges.** Implementing the ACP approach presents internal challenges, as deviations in the model can grow with system complexity. (1) Hard to model. For some complex systems, unclear internal mechanisms, incomplete knowledge systems, and limited data complicate the creation of corresponding artificial systems. While it is unnecessary for artificial systems to fully replicate the behavior of actual systems, there is still no consensus on determining the validity and equivalence of artificial systems.<sup>173</sup> (2) Hard to experiment. In terms of computational experiments, many factors in complex systems have mutual effects and nonlinear interactions. These interactions may lead to causal inversion and spurious correlation, making it arduous to design a comprehensive experiment plan to explore the behaviors of complex systems. (3) Hard to control. In terms of parallel execution, controlling actual system behaviors directly is often difficult due to the uncertainty of social factors and the free will of humans. In certain situations, behaviors can only be indirectly influenced, making parallel execution challenging to quantify, implement, and assess. Additionally, researchers must adapt the ACP approach to complex systems' diverse characteristics, a process where cognitive biases may inadvertently play a role, potentially causing negative influence.<sup>67</sup>

**External challenges.** The parallel systems method faces challenges from the fast-paced growth of AI. The rapid evolution of AI has spurred innovations across various disciplines.<sup>174</sup> In particular, the recent advancements in foundation models have achieved remarkable accomplishments in fields such as computer vision and natural language processing.<sup>175</sup> Navigating these advancements presents challenges for researchers across various fields, including those working with the parallel systems method. For instance, how can emerging AI technologies foster theoretical and technical innovation within the parallel systems realm? How will integrating new AI technologies with the parallel systems approach enhance problem-solving capabilities for complex systems, and how might this approach inspire breakthroughs in artificial general intelligence? We have already witnessed some preliminary studies on integrating foundation models with the parallel systems method,<sup>82,176</sup> and the contribution of the parallel systems method to advancing reliable and trustworthy AI has been recognized.<sup>81,177</sup> The external challenges posed by AI development may evolve into opportunities for the parallel systems method in the future.

**Ethical and legal challenges.** Ethical and legal challenges cannot be overlooked, and they mainly encompass three aspects. (1) Liability dispute. In fields such as parallel society, parallel driving, and parallel healthcare, mistakes in decision making, traffic accidents, and medical mishaps caused by machines or algorithms might lead to legal liability. (2) Privacy disclosure. The implementation of the parallel systems method often necessitates engagement with social space and may require the collection of fine-grained individual data. Specifically, constructing artificial systems usually requires multi-modals and multi-source data from various aspects. This can create a significant risk of personal privacy disclosure through object association and matching within these data. (3) Human labor

replacement. Parallel applications in various domains enable efficient collaboration among humans, machines, and algorithms. However, they can also lead to reduced human resource utilization. For instance, the deployment of parallel manufacturing has cut the number of workers on a production line from 36 to just one.<sup>15</sup> This reduction might exacerbate societal concerns about new technologies supplanting human roles. Beyond these three aspects, there exist other ethical and legal challenges that necessitate attention, including algorithmic fairness and biases, intellectual property law, safety, and transparency.<sup>178</sup>

### Perspectives

We anticipate that the parallel systems method will have far-reaching implications, offering critical insights in two aspects: promoting sustainable development and facilitating interdisciplinary research.

**Promoting sustainable development.** The parallel systems method could become a cornerstone in the pursuit of sustainable development.<sup>179</sup> (1) Improve system efficiency. By facilitating interactions between artificial and actual systems, this method paves the way for more effective cooperation among various elements, as well as more judicious resource allocation in complex systems. For instance, studies on parallel driving and parallel vehicles have demonstrated their potential in reducing greenhouse gas emissions and air pollution.<sup>134</sup> Meanwhile, parallel agriculture empowers precision agriculture, enabling meticulous resource planning and eco-friendly agricultural production.<sup>68</sup> Parallel mining enhances the efficiency and safety of open-pit mines while promoting environmentally responsible mining practices.<sup>158</sup> (2) Develop three types of humans. To promote efficient cooperation between humans and other elements such as machines, algorithms, and advanced AI technologies, future parallel applications will introduce three classifications of humans: digital, robotic, and biological. Digital and robotic humans will take over the bulk of mental and physical labor, alleviating the intense demands placed on biological humans to manage complex systems. At present, the deployment of these three types of humans in fields such as autonomous driving,<sup>142</sup> knowledge management,<sup>120</sup> artistic creation,<sup>127</sup> and industrial production<sup>15,16</sup> has already demonstrated significant advancements in collaboration between humans and various other elements.

**Facilitating interdisciplinary communication and cooperation.** The parallel systems method has the potential to facilitate interdisciplinary communication and cooperation. (1) Serve as a consensus. Different disciplines possess distinct perspectives and methodologies for addressing problems, necessitating a consensus among them to facilitate effective communication and cooperation. The parallel intelligence and ACP-based technical foundation can serve as the consensus to aid experts from different disciplines in gaining a comprehensive view of the entire problem-solving process for complex systems and comprehend their respective roles in the different stages. (2) Resolve conflict and inconsistency. The implementation of the parallel systems method is anticipated to address conflicts between diverse disciplines and inconsistencies within individual fields that often arise from challenges in theory testing. For example, there is a controversy among scholars from diverse fields regarding the efficacy of ABM techniques<sup>173</sup>; in the field of social science, two theoretical models regarding social contagion and collective behavior have had a significant impact; however, they are logically incompatible.<sup>180</sup> The parallel systems method, being application driven and tailored to specific complex systems, allows for practical validation of diverse models and methods. Through this validation, conflicts and inconsistencies can be reconciled based on practical outcomes. (3) Satisfy diverse disciplines. The parallel systems method strives to advance knowledge across various disciplines. Situated in what has been referred to as Pasteur's quadrant,<sup>180,181</sup> it reveals that application-based research can also promote fundamental understanding within each discipline. Parallel applications offer solutions to the management and control of complex systems while satisfying epistemic values across different disciplines.<sup>182</sup> For example, the parallel systems method can yield explanatory insights (e.g., human dynamics and disease outbreaks<sup>69,166,168</sup>) that are typically concerned by social science, while it can also be used to make predictions (e.g., traffic flow and accidents<sup>18,93,94</sup>) that are emphasized by computational science. (4) Become a mature field. The parallel systems method has the potential to evolve into a comprehensive and independent interdisciplinary research direction. This could prompt a restructuring of academic curricula, allowing interdisciplinary researchers to cultivate a blend of skills and knowledge, underpinned by new thinking, philosophy, science, method, and technology.<sup>60</sup> The accumulated perspectives, philosophical concepts, and cultural aspects of

interdisciplinary research through the parallel systems method will likely play a significant role in this evolution.

## CONCLUSION

This review has delved into the origins and fundamental concepts of the parallel systems method, shedding light on its objectives and technical foundation. The exploration of advanced parallel technologies and applications serves as a testament to the interdisciplinary accomplishments of the method. Despite the challenges that still need to be addressed, the future of the parallel systems method looks bright. It has the potential to contribute significantly to sustainable development and act as a unifying force across various disciplines, facilitating interdisciplinary communication and cooperation.

## REFERENCES

- Hawking, S., and Dolby, T. (2000). What is complexity? The Washington Center for Complexity. <http://www.complexsys.org/downloads/whatiscomplexity.pdf>.
- Miraz, M.H., Ali, M., Excell, P.S., et al. (2015). A review on Internet of Things (IoT), Internet of Everything (IoE) and Internet of Nano Things (IoNT). In Proceedings of the Sixth International Conference : Tuesday 8th - Friday 11th September 2015, Glyndwr University, R. Picking, ed. (IEEE), pp. 219–224.
- Guo, B., Liu, Y., Liu, S., et al. (2022). CrowdHMT: crowd intelligence with the deep fusion of human, machine, and IoT. *IEEE Internet Things J.* **9**, 24822–24842.
- Wang, F.-Y. (2010). The emergence of intelligent enterprises from CPS to CPSS. *IEEE Intell. Syst.* **25**, 85–88.
- Park, M., Maity, S.K., Wuchty, S., et al. (2023). Interdisciplinary papers supported by disciplinary grants garner deep and broad scientific impact. Preprint at arXiv.
- Helbing, D. (2012). Social Self-Organization: Agent-Based Simulations and Experiments to Study Emergent Social Behavior (Springer).
- Lazer, D., Pentland, A., Adamic, L., et al. (2009). Computational social science. *Science* **323**, 721–723.
- Salganik, M.J., Dodds, P.S., and Watts, D.J. (2006). Experimental study of inequality and unpredictability in an artificial cultural market. *Science* **311**, 854–856.
- Yilma, B.A., Panetto, H., and Naudet, Y. (2021). Systemic formalisation of Cyber-Physical-Social System (CPSS): a systematic literature review. *Comput. Ind.* **129**, 103458.
- Sowe, S.K., Zettsu, K., Simmon, E., et al. (2016). Cyber-Physical Human Systems: putting people in the loop. *IT Prof.* **18**, 10–13.
- Wang, F.-Y. (2004). Parallel system methods for management and control of complex systems. *Control Decis.* 485–489+514.
- Yang, J., Zhou, S., Feng, X., et al. (2023). Parallel intelligence and CPSS in 30 Years: an ACP approach. *China CDC Wkly.* **5**, 614–618.
- Tuegel, E.J., Ingraffea, A.R., Eason, T.G., et al. (2011). Reengineering aircraft structural life prediction using a digital twin. *Int. J. Aerosp. Eng.* **2011**, 1–14.
- Zhou, Y., Yu, F.R., Chen, J., et al. (2020). Cyber-Physical-Social Systems: a state-of-the-art survey, challenges and opportunities. *IEEE Commun. Surv. Tutorials* **22**, 389–425.
- Yang, J., Wang, X., and Zhao, Y. (2022). Parallel manufacturing for industrial metaverses: a new paradigm in smart manufacturing. *IEEE/CAA J. Autom. Sinica* **9**, 2063–2070.
- Wang, Y., Wang, J., Tian, Y., et al. (2022). Digital workers in Cyber–Physical–Social Systems for PCB manufacturing. *IEEE J. Radio Freq. Identif.* **6**, 688–692.
- Kang, M., Fan, X.-R., Hua, J., et al. (2018). Managing traditional solar greenhouse with CPSS: a just-for-fit philosophy. *IEEE Trans. Cybern.* **48**, 3371–3380.
- Sun, C., Tan, R., Deng, J., et al. (2021). Accident prediction in mesoscopic view: a CPSS-based social transportation approach. In Proceedings, 2021 IEEE 1st International Conference on Digital Twins and Parallel Intelligence (DTPI 2021): Jul. 15-Aug. 15, 2021 (The Institute of Electrical and Electronics Engineers, Inc), pp. 306–311.
- Luo, G., Zhang, H., Wang, X., et al. (2022). ACP based large-scale coordinated route planning: from perspective of Cyber-Physical-Social Systems. In 2022 IEEE 25th International Conference on Intelligent Transportation Systems (ITSC) (IEEE), pp. 1842–1849.
- Tan, S., Lai, S., Fang, F., et al. (2021). Mobility in China, 2020: a tale of four phases. *Natl. Sci. Rev.* **8**, nwab148.
- Song, B., Yan, X.-Y., Tan, S., et al. (2022). Human mobility models reveal the underlying mechanism of seasonal movements across China. *Int. J. Mod. Phys. C* **33**, 2250054.
- Cassandras, C.G. (2016). Smart cities as Cyber-Physical Social Systems. *Engineering* **2**, 156–158.
- Yuan, Y., Wang, F., Wang, T., et al. (2015). Social computing and computational societies: the foundation and consequence of smart societies. *Chin. Sci. Bull.* **60**, 460–469.
- Wang, F., Yao, D., Li, Y., et al. (2023). AI-enhanced spatial-temporal data-mining technology: new chance for next-generation urban computing. *Innovation* **4**, 100405.
- Lazer, D.M.J., Pentland, A., Watts, D.J., et al. (2020). Computational social science: obstacles and opportunities. *Science* **369**, 1060–1062.
- Newell, W.H., Wentworth, J., and Sebberson, D. (2001). A theory of interdisciplinary studies. *Issues in Interdisciplinary Studies* **1–25**.
- Wang, F.-Y. (2004). Social computing: concepts, contents, and methods. *Int. J. Intell. Control Syst.* **9**, 91–96.
- Gilbert, N., and Troitzsch, K. (2005). *Simulation for the Social Scientist* (McGraw-Hill Education).
- Gilbert, N., and Conte, R. (1995). *Artificial Societies* (Taylor & Francis).
- Epstein, J.M., and Axtell, R. (1996). *Growing Artificial Societies: Social Science from the Bottom up* (Brookings Institution Press).
- Arthur, W.B., Holland, J.H., LeBaron, B., et al. (1996). *Asset Pricing Under Endogenous Expectation in An Artificial Stock Market. The Economy as An Evolving Complex System. II.*
- Waldrop, M.M. (2018). Free agents. *Science* **360**, 144–147.
- Zhang, J., Wang, W., Xia, F., et al. (2020). Data-driven computational social science: a survey. *Big Data Research* **21**, 100145.
- Blumenstock, J., Cadamuro, G., and On, R. (2015). Predicting poverty and wealth from mobile phone metadata. *Science* **350**, 1073–1076.
- Gao, C., Zhang, R., Chen, X., et al. (2022). Integrating Internet multisource big data to predict the occurrence and development of COVID-19 cryptic transmission. *NPJ Digit. Med.* **5**, 161.
- Palan, S., and Schitter, C. (2018). Prolific.ac—a subject pool for online experiments. *Journal of Behavioral and Experimental Finance* **17**, 22–27.
- Horton, J.J., Rand, D.G., and Zeckhauser, R.J. (2011). The online laboratory: conducting experiments in a real labor market. *Exp. Econ.* **14**, 399–425.
- Chang, R.M., Kauffman, R.J., and Kwon, Y. (2014). Understanding the paradigm shift to computational social science in the presence of big data. *Decis. Support Syst.* **63**, 67–80.
- Open Science Collaboration (2015). Estimating the reproducibility of psychological science. *Science* **349**, aac4716.
- Pan, X., and Hamilton, A.F.d.C. (2018). Why and how to use virtual reality to study human social interaction: The challenges of exploring a new research landscape. *Br. J. Psychol.* **109**, 395–417.
- Misaki, M., Kerr, K.L., Ratliff, E.L., et al. (2020). Beyond synchrony: the capacity of fMRI hyper-scanning for the study of human social interaction. *Soc. Cognit. Affect Neurosci.* **16**, 84–92.
- Puccinelli, D., and Haenggi, M. (2005). Wireless sensor networks: applications and challenges of ubiquitous sensing. *IEEE Circ. Syst. Mag.* **5**, 19–31.
- Liu, Z., and Wang, J. (2020). Human-cyber-physical systems: concepts, challenges, and research opportunities. *Front. Inform. Technol. Electron. Eng.* **21**, 1535–1553.
- Xu, J., Liu, A., Xiong, N., et al. (2017). Integrated collaborative filtering recommendation in social cyber-physical systems. *Int. J. Distributed Sens. Netw.* **13**, 155014771774974.
- Wang, F.-Y., and Zhang, J.J. (2018). Transportation 5.0 in CPSS: towards ACP-based society-centered intelligent transportation. In ITSC: 2017 IEEE 20th International Conference on Intelligent Transportation Systems : 16-19 October 2017 (Institute of Electrical and Electronics Engineers), pp. 762–767.
- Ge, L., Lv, B., Li, N., et al. (2022). A hypertension parallel healthcare system based on the ACP approach. *IEEE J. Radio Freq. Identif.* **6**, 724–728.
- Guo, C., Dou, Y., Bai, T., et al. (2023). ArtVerse: a paradigm for parallel human–machine collaborative painting creation in metaverses. *IEEE Trans. Syst. Man Cybern. Syst.* **53**, 2200–2208.
- Chen, B.Y., Lin, J.J., Lu, M.K., et al. (2021). Crowdsensing in social transportation for ITS: outline and prospective. *NPJ Schizophr.* **7**, 35–42.
- Zhao, Y., Hu, C., Zhu, Z., et al. (2023). Crowd sensing intelligence for ITS: participants, methods, and stages. *IEEE Trans. Intell. Veh.* **8**, 3541–3546.
- Zhu, Z., Wang, X., Zhao, Y., et al. (2022). Crowdsensing intelligence by decentralized autonomous vehicles organizations and operations. *IEEE Trans. Intell. Veh.* **7**, 804–808.
- Zhu, S., Yu, T., Xu, T., et al. (2023). Intelligent computing: the latest advances, challenges and future. *Intell. Comput.* **2**.
- Wang, Y., Wang, F.-Y., Wang, X., et al. (2021). Parallel hospital: ACP-based hospital smart operating system. In Proceedings, 2021 IEEE 1st International Conference on Digital Twins and Parallel Intelligence (DTPI 2021): Jul. 15-Aug. 15, 2021 (The Institute of Electrical and Electronics Engineers, Inc), pp. 474–477.
- Zhang, J.J., Wang, F.-Y., Wang, X., et al. (2018). Cyber-Physical-Social Systems: the state of the art and perspectives. *IEEE Trans. Comput. Soc. Syst.* **5**, 829–840.
- Wang, F.-Y. (1994). *Shadow Systems: A New Concept for Nested and Embedded Co-simulation for Intelligent Systems* (University of Arizona).
- Wang, F.-Y. (2004). Computational theory and method for complex system research. *China Basic Science* **6**, 3–10.
- Wang, F.-Y. (2004). Computational experiments for behavior analysis and decision evaluation of complex systems. *J. Syst. Simul.* **16**, 893–897.
- Ren, Y., Jiang, H., Feng, X., et al. (2022). ACP-based modeling of the parallel vehicular crowd sensing system: framework, components and an application example. *IEEE Trans. Intell. Veh.* **14**, 1–13.
- Wang, X., Li, L., Yuan, Y., et al. (2016). ACP-based social computing and parallel intelligence: Societies 5.0 and beyond. *CAAI Transactions on Intelligence Technology* **1**, 377–393.
- Wang, F.-Y. (2022). Parallel intelligence in metaverses: welcome to Hanoi. *IEEE Intell. Syst.* **37**, 16–20.
- Wang, F.-Y. (2022). The DAO to MetaControl for MetaSystems in metaverses: the system of parallel control systems for knowledge automation and control intelligence in CPSS. *IEEE/CAA J. Autom. Sinica* **9**, 1899–1908.
- Salganik, M.J. (2019). *Bit by Bit: Social Research in the Digital Age* (Princeton University Press).
- Li, L., Lin, Y., Zheng, N., et al. (2017). Parallel learning: a perspective and a framework. *IEEE/CAA J. Autom. Sinica* **4**, 389–395.
- Wang, F.-Y., Wang, X., Li, L., et al. (2016). Steps toward parallel intelligence. *IEEE/CAA J. Autom. Sinica* **3**, 345–348.

64. Lu, H., Zhu, Y., Yuan, Y., et al. (2021). Social signal-driven knowledge automation: a focus on social transportation. *IEEE Trans. Comput. Soc. Syst.* **8**, 737–753.
65. Yang, L., Chen, S., Wang, X., et al. (2019). Digital twins and parallel systems: state of the art, comparisons and prospect. *Acta Autom. Sin.* **45**, 2001–2031.
66. Zhang, J., Xu, P., and Wang, F.-Y. (2020). Parallel systems and digital twins: a data-driven mathematical representation and computational framework. *Acta Autom. Sin.* **46**, 1346–1356.
67. Ye, P., and Wang, F.-Y. (2022). Parallel population and parallel human—a cyber-physical social approach. *IEEE Intell. Syst.* **37**, 19–27.
68. Wang, X., Kang, M., Sun, H., et al. (2022). DeCASA in AgriVerse: parallel agriculture for smart villages in metaverses. *IEEE/CAA J. Autom. Sinica* **9**, 2055–2062.
69. Lu, M., Chen, S., Xue, X., et al. (2022). Computational experiments for complex social systems—part II: the evaluation of computational models. *IEEE Trans. Comput. Soc. Syst.* **9**, 1224–1236.
70. Wang, K., Gou, C., Zheng, N., et al. (2017). Parallel vision for perception and understanding of complex scenes: methods, framework, and perspectives. *Artif. Intell. Rev.* **48**, 299–329.
71. Ye, P., Wang, X., Zheng, W., et al. (2022). Parallel cognition: hybrid intelligence for human-machine interaction and management. *Front. Inform. Technol. Electron. Eng.* **23**, 1765–1779.
72. Cheng, X., Wang, X., Liu, S., et al. (2022). Optimization of sucker rod pump operations using parallel systems. *IEEE J. Radio Freq. Identif.* **6**, 977–981.
73. Park, J.S., O'Brien, J.C., Cai, C.J., et al. (2023). Generative agents: interactive simulacra of human behavior. Preprint at arXiv.
74. Wang, F.-Y. (2010). Parallel control and management for intelligent transportation systems: concepts, architectures, and applications. *IEEE Trans. Intell. Transport. Syst.* **11**, 630–638.
75. Xue, X., Yu, X., Zhou, D., et al. (2022). Computational experiments: past, present and perspective. *Acta Autom. Sin.* **49**, 1–26.
76. Li, L., Wang, X., Wang, K., et al. (2019). Parallel testing of vehicle intelligence via virtual-real interaction. *Sci. Robot.* **4**, eaaw4106.
77. Li, L., Chen, L., Zhang, H., et al. (2016). Intelligence testing for autonomous vehicles: a new approach. *IEEE Trans. Intell. Veh.* **61**, 158–168.
78. Lv, Y., Chen, Y., Li, L., et al. (2018). Generative adversarial networks for parallel transportation systems. *IEEE Intell. Transport. Syst. Mag.* **10**, 4–10.
79. Wang, J., Wang, Y., Tian, Y., et al. (2022). SST-GAN: single sample-based realistic traffic image generation for parallel vision. In 2022 IEEE 25th International Conference on Intelligent Transportation Systems (ITSC) (IEEE), pp. 1485–1490.
80. Li, X., Ye, P., Jin, J., et al. (2022). Data augmented deep behavioral cloning for urban traffic control operations under a parallel learning framework. *IEEE Trans. Intell. Transport. Syst.* **23**, 5128–5137.
81. Li, X., Ye, P., Li, J., et al. (2022). From features engineering to scenarios engineering for trustworthy AI: I&I, C&C, and V&V. *IEEE Intell. Syst.* **37**, 18–26.
82. Lu, J., Wang, X., Cheng, X., et al. (2022). Parallel factories for smart industrial operations: from big AI models to field foundational models and scenarios engineering. *IEEE/CAA J. Autom. Sinica* **9**, 2079–2086.
83. Miao, Q., Lv, Y., Huang, M., et al. (2023). Parallel learning: overview and perspective for computational learning across Syn2Real and Sim2Real. *IEEE/CAA J. Autom. Sinica* **10**, 603–631.
84. Yin, L., Chen, L., Yu, T., et al. (2019). Lazy reinforcement learning through parallel systems and social system for real-time economic generation dispatch and control. *Acta Autom. Sin.* **45**, 706–719.
85. Dong, H., Zhu, H., Li, Y., et al. (2018). Parallel intelligent systems for integrated high-speed railway operation control and dynamic scheduling. *IEEE Trans. Cybern.* **48**, 3381–3389.
86. Wang, Z., Chen, Y., Zeng, J., et al. (2020). A CPSS solution to energy management in community microgrid based on guiding cues and parallel control. *Proceedings of the CSEE* **40**, 6864–6874.
87. Hu, Y., Wang, X., and Wang, F.-Y. (2018). A quantitative study of factors influence on evacuation in building fire emergencies. *IEEE Trans. Comput. Soc. Syst.* **5**, 544–552.
88. Zhang, X., Yu, T., Xu, Z., et al. (2018). A cyber-physical-social system with parallel learning for distributed energy management of a microgrid. *Energy* **165**, 205–221.
89. Liu, T., Tian, B., Ai, Y., et al. (2018). Parallel reinforcement learning: a framework and case study. *IEEE/CAA J. Autom. Sinica* **5**, 827–835.
90. Jin, J., Guo, H., Xu, J., et al. (2021). An end-to-end recommendation system for urban traffic controls and management under a parallel learning framework. *IEEE Trans. Intell. Transport. Syst.* **22**, 1616–1626.
91. Huang, T., Li, M., and Zhu, W. (2022). ACP based reinforcement learning for long-term recommender system. *Int. J. Mach. Learn. Cybern.* **13**, 3285–3297.
92. Liu, T., Tian, B., Ai, Y., et al. (2020). Parallel reinforcement learning-based energy efficiency improvement for a cyber-physical system. *IEEE/CAA J. Autom. Sinica* **7**, 617–626.
93. Jin, J., Rong, D., Zhang, T., et al. (2022). A GAN-based short-term link traffic prediction approach for urban road networks under a parallel learning framework. *IEEE Trans. Intell. Transport. Syst.* **23**, 16185–16196.
94. Chen, Y., Lv, Y., Wang, X., et al. (2018). Traffic flow prediction with parallel data. In 2018 21st International Conference on Intelligent Transportation Systems (ITSC) (IEEE), pp. 614–619.
95. Chen, Y., Mo, L., Wang, X., et al. (2020). Traffic flow imputation using parallel data and generative adversarial networks. *IEEE Trans. Intell. Transport. Syst.* **12**, 1624–1642.
96. Wang, K., Lu, Y., Wang, Y., et al. (2017). Parallel imaging: a new theoretical framework for image generation. *Pattern Recognit. Artif. Intell.* **30**, 577–587.
97. Xu, H., Lan, G., Wu, S., et al. (2019). Online intelligent calibration of cameras and LiDARs for autonomous driving systems. In The 2019 IEEE Intelligent Transportation Systems Conference - ITSC: Auckland, New Zealand, 27-30 October 2019 (IEEE), pp. 3913–3920.
98. Wang, J., Wang, X., Shen, T., et al. (2022). Parallel vision for long-tail regularization: initial results from IVFC autonomous driving testing. *IEEE Trans. Intell. Veh.* **7**, 286–299.
99. Wang, J., Wang, X., Shen, T., et al. (2022). A long-tail regularization method for traffic sign recognition based on parallel vision. *IEEE J. Radio Freq. Identif.* **6**, 957–961.
100. Chen, L., Wang, Q., Lu, X., et al. (2020). Learning driving models from parallel end-to-end driving data set. *Proc. IEEE* **108**, 262–273.
101. Li, X., Wang, K., Tian, Y., et al. (2019). The ParallelEye dataset: a large collection of virtual images for traffic vision research. *IEEE Trans. Intell. Transport. Syst.* **20**, 2072–2084.
102. Zhang, H., Li, Y., Li, X., et al. (2021). Parallel vision and learning for intelligent perception in smart driving. In Proceedings, 2021 IEEE 1st International Conference on Digital Twins and Parallel Intelligence (DTPi 2021): Jul. 15-Aug. 15, 2021 (The Institute of Electrical and Electronics Engineers, Inc), pp. 234–237.
103. Shen, Y.-T., Lee, H., Kwon, H., et al. (2022). Progressive transformation learning for leveraging virtual images in training. Preprint at arXiv.
104. Doersch, C., and Zisserman, A. (2019). Sim2real transfer learning for 3d human pose estimation: motion to the rescue. *Adv. Neural Inf. Process. Syst.* **32**.
105. Miao, Q., Huang, M., Lv, Y., et al. (2022). Parallel learning between science for AI and AI for science: a brief overview and perspective. In 2022 Australian & New Zealand Control Conference (ANZCC) (IEEE), pp. 171–175.
106. Yuan, Y., and Wang, F.-Y. (2017). Parallel blockchain: concept, methods and issues. *Acta Autom. Sin.* **43**, 1703–1712.
107. Wang, F.-Y., Yuan, Y., Rong, C., et al. (2018). Parallel blockchain: an architecture for CPSS-based smart societies. *IEEE Trans. Comput. Soc. Syst.* **5**, 303–310.
108. Wang, F.-Y., Yuan, Y., Zhang, J., et al. (2018). Blockchainized internet of minds: a new opportunity for Cyber-Physical-Social Systems. *IEEE Trans. Comput. Soc. Syst.* **5**, 897–906.
109. Wang, S., Ding, W., Li, J., et al. (2019). Decentralized autonomous organizations: concept, model, and applications. *IEEE Trans. Comput. Soc. Syst.* **6**, 870–878.
110. Qin, R., Yuan, Y., and Wang, F.-Y. (2020). Blockchain-based knowledge automation for CPSS-oriented parallel management. *IEEE Trans. Comput. Soc. Syst.* **7**, 1180–1188.
111. Li, H., Chen, H., He, L., et al. (2021). From technology to society: an overview of blockchain-based DAO. *Hum. Biol.* **92**, 204–214.
112. Ding, W.W., Liang, X., Hou, J., et al. (2021). Parallel governance for decentralized autonomous organizations enabled by blockchain and smart contracts. In Proceedings, 2021 IEEE 1st International Conference on Digital Twins and Parallel Intelligence (DTPi 2021): Jul. 15-Aug. 15, 2021 (The Institute of Electrical and Electronics Engineers, Inc), pp. 1–4.
113. Yuan, Y., and Wang, F.-Y. (2016). Towards blockchain-based intelligent transportation systems. In 2016 IEEE 19th International Conference on Intelligent Transportation Systems (ITSC) (IEEE), pp. 2663–2668.
114. Wang, S., Wang, J., Wang, X., et al. (2018). Blockchain-Powered Parallel Healthcare Systems Based on the ACP Approach. *IEEE Trans. Comput. Soc. Syst.* **5**, 942–950.
115. Peng, X., Zhang, X., Wang, X., et al. (2022). Research on the cross-chain model of rice supply chain supervision based on parallel blockchain and smart contracts. *Foods* **11**, 1269.
116. Wang, F.-Y. (2014). Parallel control: a method for data-driven and computational control. *Acta Autom. Sin.* **39**, 293–302.
117. Song, Y., He, X., Liu, Z., et al. (2018). Parallel control of distributed parameter systems. *IEEE Trans. Cybern.* **48**, 3291–3301.
118. Wei, Q., Wang, L., Lu, J., et al. (2022). Discrete-time self-learning parallel control. *IEEE Trans. Syst. Man Cybern. Syst.* **52**, 192–204.
119. Lu, J., Wei, Q., Liu, Y., et al. (2022). Event-triggered optimal parallel tracking control for discrete-time nonlinear systems. *IEEE Trans. Syst. Man Cybern. Syst.* **52**, 3772–3784.
120. Li, J., Qin, R., and Wang, F.-Y. (2023). The future of management: DAO to smart organizations and intelligent operations. *IEEE Trans. Syst. Man Cybern. Syst.* **53**, 3389–3399.
121. Wang, F.-Y. (2020). Parallel economics: a new supply-demand philosophy via parallel organizations and parallel management. *IEEE Trans. Comput. Soc. Syst.* **7**, 840–848.
122. Shen, Y., Liu, Y., Tian, Y., et al. (2022). Parallel sensing in metaverses: virtual-real interactive smart systems for “6S” sensing. *IEEE/CAA J. Autom. Sinica* **9**, 2047–2054.
123. Tian, Y., Wang, X., Shen, Y., et al. (2021). Parallel point clouds: hybrid point cloud generation and 3D model enhancement via virtual-real integration. *Rem. Sens.* **13**, 2868.
124. Wang, F.-Y., Meng, X., Du, S., et al. (2021). Parallel light field: the framework and processes. *Chinese Journal of Intelligent Science and Technology* **3**, 110–122.
125. Wang, F.-Y., and Wang, Y. (2020). Parallel ecology for intelligent and smart Cyber-Physical-Social Systems. *IEEE Trans. Comput. Soc. Syst.* **7**, 1318–1323.
126. Tang, Y., Liang, J., Hare, R., et al. (2020). A personalized learning system for parallel intelligent education. *IEEE Trans. Comput. Soc. Syst.* **7**, 352–361.
127. Guo, C., Lu, Y., Dou, Y., et al. (2023). Can ChatGPT boost artistic creation: the need of imaginative intelligence for parallel art. *IEEE/CAA J. Autom. Sinica* **10**, 835–838.
128. Zhu, F., Li, Z., Chen, S., et al. (2016). Parallel transportation management and control system and its applications in building smart cities. *IEEE Trans. Intell. Transport. Syst.* **17**, 1576–1585.
129. Zhu, F., Lv, Y., Chen, Y., et al. (2020). Parallel transportation systems: toward IoT-enabled smart urban traffic control and management. *IEEE Trans. Intell. Transport. Syst.* **21**, 4063–4071.
130. Zhao, C., Lv, Y., Jin, J., et al. (2022). DeCAST in TransVerse for parallel intelligent transportation systems and smart cities: three decades and beyond. *IEEE Intell. Transport. Syst. Mag.* **14**, 6–17.

131. Zhao, Y.-F., Kong, Q.-J., Gao, H., et al. (2014). Parallel management for traffic signal control. ITSC: 17th International IEEE Conference on Intelligent Transportation Systems **8–11**, 2888–2893. October 2014 (IEEE).
132. Chen, H., Ai, H., Wang, X., et al. (2021). Analysis and perception of social signals in social transportation. *Acta Autom. Sin.* **47**, 1256–1272.
133. Jin, J., Rong, D., Pang, Y., et al. (2022). PRECOM: a parallel recommendation engine for control, operations, and management on congested urban traffic networks. *IEEE Trans. Intell. Transport. Syst.* **23**, 7332–7342.
134. Chen, Y., Zhang, H., and Wang, F.-Y. (2023). Society-centered and DAO-powered sustainability in transportation 5.0: an intelligent vehicles perspective. *IEEE Trans. Intell. Veh.* **8**, 2635–2638.
135. Chen, J., Zhang, Y., and Wang, F.Y. (2023). ACP-based energy-efficient schemes for sustainable intelligent transportation systems. *IEEE Trans. Intell. Veh.* **8**, 3224–3227.
136. Sun, Y., Hu, Y., Zhang, H., et al. (2023). A parallel emission regulatory framework for intelligent transportation systems and smart cities. *IEEE Trans. Intell. Veh.* **8**, 1017–1020.
137. Wang, F.-Y., Yang, L.-Q., Yang, J., et al. (2016). Urban intelligent parking system based on the parallel theory. In 2016 International Conference on Computing, Networking and Communications: 15-18 February 2016 (Institute of Electrical and Electronics Engineers), pp. 1–5.
138. Wang, F.-Y., Zheng, N.-N., Cao, D., et al. (2017). Parallel driving in CPSS: a unified approach for transport automation and vehicle intelligence. *IEEE/CAA J. Autom. Sinica* **4**, 577–587.
139. Wang, F.-Y., Yuan, Y., Li, J., et al. (2018). From intelligent vehicles to smart societies: a parallel driving approach. *IEEE Trans. Comput. Soc. Syst.* **5**, 594–604.
140. Han, S., Cao, D., Li, L., et al. (2019). From software-defined vehicles to self-driving vehicles: a report on CPSS-based parallel driving. *IEEE Intell. Transport. Syst. Mag.* **11**, 6–14.
141. Liu, T., Xing, Y., Tang, X., et al. (2021). Digital quadruplets for Cyber-Physical-Social System for parallel driving: from concept to application. *IEEE Intell. Transport. Syst. Mag.* **13**, 59–69.
142. Chen, L., Zhang, Y., Tian, B., et al. (2022). Parallel driving OS: a ubiquitous operating system for autonomous driving in CPSS. *IEEE Trans. Intell. Veh.* **7**, 886–895.
143. Han, S., Wang, F.-Y., Wang, Y., et al. (2017). Parallel vehicles based on the ACP theory: safe trips via self-driving. In 2017 IEEE Intelligent Vehicles Symposium (IV 2017), 11–14, pp. 20–25. June 2017 (IEEE).
144. Han, S., Wang, X., Zhang, J.J., et al. (2019). Parallel vehicular networks: a CPSS-based approach via multimodal big data in IoV. *IEEE Internet Things J.* **6**, 1079–1089.
145. Xing, Y., Lv, C., Wang, H., et al. (2019). Driver activity recognition for intelligent vehicles: a deep learning approach. *IEEE Trans. Veh. Technol.* **68**, 5379–5390.
146. Chen, L., Hu, X., Tian, W., et al. (2019). Parallel planning: a new motion planning framework for autonomous driving. *IEEE/CAA J. Autom. Sinica* **6**, 236–246.
147. Teng, S., Hu, X., Deng, P., et al. (2023). Motion planning for autonomous driving: the state of the art and future perspectives. Preprint at arXiv.
148. Wang, F.-Y., and Wong, P.K. (2013). Intelligent systems and technology for integrative and predictive medicine. *ACM Trans. Intell. Syst. Technol.* **4**, 1–6.
149. Wang, F.-Y., Li, C., Guo, Y., et al. (2017). Parallel gout: an ACP-based system framework for gout diagnosis and treatment. *Pattern Recognit. Artif. Intell.* **30**, 1057–1068.
150. Wang, F.-Y., Zhang, M., MENG, X.B., et al. (2017). Parallel surgery: an ACP-based approach for intelligent operations. *Pattern Recognit. Artif. Intell.* **30**, 961–970.
151. Wang, S., Tian, W., Liu, Y., et al. (2021). Robotic intra-operative ultrasound: virtual environments and parallel systems. *Clin. Nutr.* **40**, 1095–1101.
152. Wang, F.-Y., Zhang, M., Meng, X., et al. (2018). Parallel eyes: an ACP-based smart ophthalmic diagnosis and treatment. *Pattern Recognit. Artif. Intell.* **31**, 495–504.
153. Wang, F.-Y., Gou, C., Wang, J.G., et al. (2019). Parallel skin: a vision-based dermatological analysis framework. *Pattern Recognit. Artif. Intell.* **32**, 577–588.
154. Wang, S., Xie, T., Hao, X., et al. (2021). Parallel hospitals: from hospital information system (HIS) to hospital smart operating system (HSOS). *Thorac. Cancer* **12**, 2585–2593.
155. Wang, F.-Y. (2023). New control paradigm for industry 5.0: From big models to foundation control and management. *IEEE/CAA J. Autom. Sinica* **10**, 1643–1646.
156. Wang, Z., Wang, Y., Cui, Y., et al. (2023). Steps toward industry 5.0: Building “6S” parallel industries with cyber-physical-social intelligence. *J. Clin. Med.* **12**, 1692–1703.
157. Li, S., Wang, Y., Wang, X., et al. (2021). Mechanical design paradigm based on ACP method in parallel manufacturing. In Proceedings, 2021 IEEE 1st International Conference on Digital Twins and Parallel Intelligence (DTPI 2021): Jul. 15-Aug. 15, 2021 (The Institute of Electrical and Electronics Engineers, Inc), pp. 1–4.
158. Xiong, G., Hou, J., Wang, F.-Y., et al. (2011). Parallel system method to improve safety and reliability of nuclear power plants. In Proceedings of the 9th World Congress on Intelligent Control and Automation (Clearance Center; Curran Associates Inc [distributor]), pp. 237–242.
159. Cheng, L., and Yu, T. (2019). Smart dispatching for energy internet with complex cyber-physical-social systems: A parallel dispatch perspective. *Int. J. Energy Res.* **43**, 3080–3133.
160. Chen, L., Hu, X., Wang, G., et al. (2021). Parallel mining operating systems: from digital twins to mining intelligence. In Proceedings, 2021 IEEE 1st International Conference on Digital Twins and Parallel Intelligence (DTPI 2021): Jul. 15-Aug. 15, 2021 (The Institute of Electrical and Electronics Engineers, Inc), pp. 469–473.
161. Gao, Y., Ai, Y., Tian, B., et al. (2020). Parallel end-to-end autonomous mining: an IoT-oriented approach. *IEEE Internet Things J.* **7**, 1011–1023.
162. Kang, M., and Wang, F.-Y. (2017). From parallel plants to smart plants: intelligent control and management for plant growth. *IEEE/CAA J. Autom. Sinica* **4**, 161–166.
163. Kang, M., Wang, X., Wang, H., et al. (2023). The development of AgriVerse: past, present, and future. *IEEE Trans. Syst. Man Cybern. Syst.* **53**, 3718–3727.
164. Wang, F.-Y. (2020). Parallel emergency: social renormalization via monads and computational social systems. *IEEE Trans. Comput. Soc. Syst.* **7**, 286–292.
165. Duan, W., Cao, Z., Wang, Y., et al. (2013). An ACP approach to public health emergency management: using a campus outbreak of H1N1 influenza as a case study. *IEEE Trans. Syst. Man Cybern. Syst.* **43**, 1028–1041.
166. Zhu, Z., Chen, B., Chen, H., et al. (2022). Strategy evaluation and optimization with an artificial society toward a Pareto optimum. *Innovation* **3**, 100274.
167. Zhu, F., Chen, S., Mao, Z.-H., et al. (2014). Parallel public transportation system and its application in evaluating evacuation plans for large-scale activities. *IEEE Trans. Intell. Transport. Syst.* **15**, 1728–1733.
168. Hu, Y., Wang, F.-Y., and Liu, X. (2014). A CPSS approach for emergency evacuation in building fires. *IEEE Intell. Syst.* **29**, 48–52.
169. Zhou, M., Dong, H., Ning, B., et al. (2020). Parallel urban rail transit stations for passenger emergency management. *IEEE Intell. Syst.* **35**, 16–27.
170. Tan, K., Yang, L., Liu, X., et al. (2021). An IVC-based nuclear emergency parallel evacuation system. *IEEE Trans. Comput. Soc. Syst.* **8**, 844–855.
171. Wang, F.-Y. (2022). Parallel Management: The DAO to smart ecological technology for complexity management intelligence. *Acta Autom. Sin.* **48**, 2655–2669.
172. Wang, F.-Y., Qin, R., Wang, X., et al. (2022). Metasocieties in metaverse: Metaeconomics and Metamanagement for Metaenterprises and Metacities. *IEEE Trans. Comput. Soc. Syst.* **9**, 2–7.
173. Louie, M.A., and Carley, K.M. (2008). Balancing the criticisms: validating multi-agent models of social systems. *Simulat. Model. Pract. Theor.* **16**, 242–256.
174. Xu, Y., Liu, X., Cao, X., et al. (2021). Artificial intelligence: A powerful paradigm for scientific research. *Innovation* **2**, 100179.
175. Bommasani, R., Hudson, D.A., Adeli, E., et al. (2021). On the opportunities and risks of foundation models. Preprint at arXiv.
176. Zhao, C., Dai, X., Lv, Y., et al. (2022). Foundation models for transportation intelligence: ITS convergence in TransVerse. *IEEE Intell. Syst.* **37**, 77–82.
177. Li, X., Tian, Y., Ye, P., et al. (2023). A novel scenarios engineering methodology for foundation models in Metaverse. *IEEE Trans. Syst. Man Cybern. Syst.* **53**, 2148–2159.
178. Gerke, S., Minssen, T., and Cohen, G. (2020). Ethical and legal challenges of artificial intelligence-driven healthcare. In *Artificial Intelligence in Healthcare Data*, A. Bohr and K. Memarzadeh, eds. (Academic Press), pp. 295–336.
179. (2023.0002). THE 17 GOALS | Sustainable Development. <https://sdgs.un.org/goals>
180. Watts, D.J. (2017). Should social science be more solution-oriented? *Nat. Hum. Behav.* **1**, 0015.
181. Stokes, D.E. (2011). *Pasteur's Quadrant: Basic Science and Technological Innovation* (Brookings Institution Press).
182. Hofman, J.M., Watts, D.J., Athey, S., et al. (2021). Integrating explanation and prediction in computational social science. *Nature* **595**, 181–188.

## ACKNOWLEDGMENTS

This work is supported by the National Natural Science Foundation of China (62202477, 62173337, 62276272, 21808181, 72071207, 72025405, 72088101), Special Key Project of Biosafety Technologies (2022YFC2604000) for the National Major Research & Development Program of China, Social Science Foundation of Shanghai (2022JG204-ZGL730), National Social Science Foundation of China (22ZDA102), and Hunan Science and Technology Plan project (2020TP1013, 2020JJ4673, 2023JJ40685). This work is dedicated to the National University of Defense University (NUDT) for its 70<sup>th</sup> anniversary.

## AUTHOR CONTRIBUTIONS

Y.Z., Z.-Q.Z., S.-H.Q., and B.C. wrote and edited the manuscript. J.-C.H., X.L., and F.-Y.W. supervised and revised the manuscript. Other authors collected and collated the publications included in this review. All authors contributed to the article and approved the submitted version.

## DECLARATION OF INTERESTS

The authors declare no competing interests.

## SUPPLEMENTAL INFORMATION

It can be found online at <https://doi.org/10.1016/j.xinn.2023.100521>.

## LEAD CONTACT WEBSITE

<https://sihangqiu.com/>  
<https://www.homexinlu.com/>

**The Innovation, Volume 4**

## **Supplemental Information**

### **Toward parallel intelligence: An interdisciplinary solution for complex systems**

**Yong Zhao, Zhengqiu Zhu, Bin Chen, Sihang Qiu, Jincal Huang, Xin Lu, Weiyi Yang, Chuan Ai, Kuihua Huang, Cheng He, Yucheng Jin, Zhong Liu, and Fei-Yue Wang**

## 1. The snowballing literature review procedure

In this study, we have opted for the snowballing literature review method<sup>1,2</sup> instead of the conventional systematic review approach that relies on database searches. This decision was based on three specific reasons:

- 1) Formulating a precise search proved challenging, as it carried the risk of yielding numerous irrelevant and superfluous publications. Furthermore, our topic's keywords 'parallel systems' and 'ACP' are also utilized in other fields. For instance, in computational science, the parallel system also refers to a system capable of handling multiple tasks or instructions simultaneously. In medicine, the ACP also means Advance Care Planning.
- 2) The interdisciplinary nature of the research area poses challenges in selecting appropriate databases and constructing effective search strings. Some publications on the parallel systems method do not explicitly use terms such as 'parallel systems', 'parallel intelligence', or 'ACP approach' in their titles, but instead employ the term 'parallel X' extensively, including parallel learning, parallel sensing, and parallel mining.
- 3) Snowballing method is comparable to conducting multiple database searches and is particularly useful for expanding existing literature reviews with new aspects. Relevant publications can be continuously found through the citation network, search engine and author network, allowing the included publications to accumulate like a snowball across multiple fields.

We attempted to acquire publications via a database search on Web of Science, however the outcomes were unsatisfactory. For example, we used search string *S*: {parallel systems}, {parallel system}, {parallel intelligence}, {ACP} in our query with a publication date range from 2004-01-01 to 2023-07-01. The search yielded 73,300 publication records, posing a significant challenge for subsequent filtering of relevant publications. Due to the aforementioned reasons, the search results contain a large number of records that are not related to the parallel systems method. More seriously, many publications related to parallel systems method are not included in the search results.

In this circumstance, we employed the snowballing literature review method, which entails two steps: deriving the initial set of topics and conducting snowballing in iterations. The specifics are outlined below:

1) Deriving the initial set of topics.

We selected two preview reviews<sup>3,4</sup> on the parallel systems method and extracted the initial topics from them, including parallel learning, parallel sensing, parallel transportation, etc. Due to the interdisciplinary nature of the parallel systems method, these topics are distributed in various fields.

2) Conducting snowballing in iterations.

Based on the initial set of topics, various methods were employed to obtain relevant publications. More topics were extracted in these publications and driven search for new publications. The following are the methods utilized to acquire these publications:

- Using these topics as search string in the search engines, such as Google Scholar, and screening the results;
- Obtaining publications through the citation and author networks;
- Discussing with experts and asking them to recommend publications.

Through the implementation of a snowballing literature review approach, a total of 215 publications and 53 topics were identified and incorporated into this review. The complete list of publications and topics can be found in the Supplementary Data.



## 2. Publication analysis

Here, we present the publication analysis of the 215 publications included in this review.

### 1) Year analysis

The annual distribution of the included publications is shown in Fig. 1. It reveals a general upward trend in the number of publications related to the parallel systems methods. Notably, since the emergence of parallel intelligence in 2016, this growth has been particularly rapid.

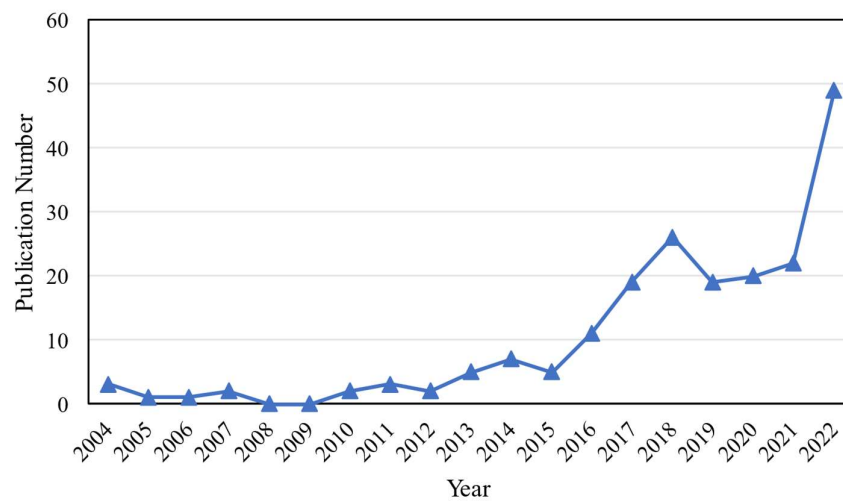


Figure 1. Annual distribution of publications.

We also tallied the quantity of publications that depicted or referenced parallel intelligence, as illustrated in Fig. 2. Since its inception in 2016, there has been a discernible upward trend in the number of related publications.

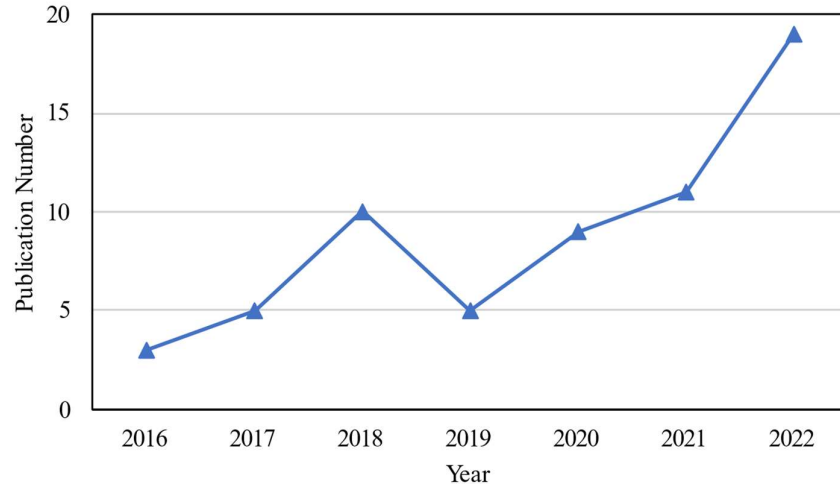


Figure 2. Annual distribution of publications related to parallel intelligence.

## 2) Topic analysis

We have extracted 53 topics of the parallel systems method from 215 publications. Given that some of these topics were mentioned in multiple publications, we conducted the matching between publications and topics to investigate the heat of topics and the relationship between topics. There are three principles for matching: 1) the topic is mentioned directly in the publication. 2) the topic is not mentioned in the publications, but the content of the publication is related to the topic. 3) the topic mentioned in the publication belongs to a broader topic. For example, publications that discuss parallel vehicles are deemed relevant to parallel transportation as well. Figure 3 illustrates the word cloud map of the parallel systems method based on topics and their frequency in these publications. Note that the ACP approach is not included in the topics since it serves as the technical foundation and be mentioned in each publication of the parallel systems method.

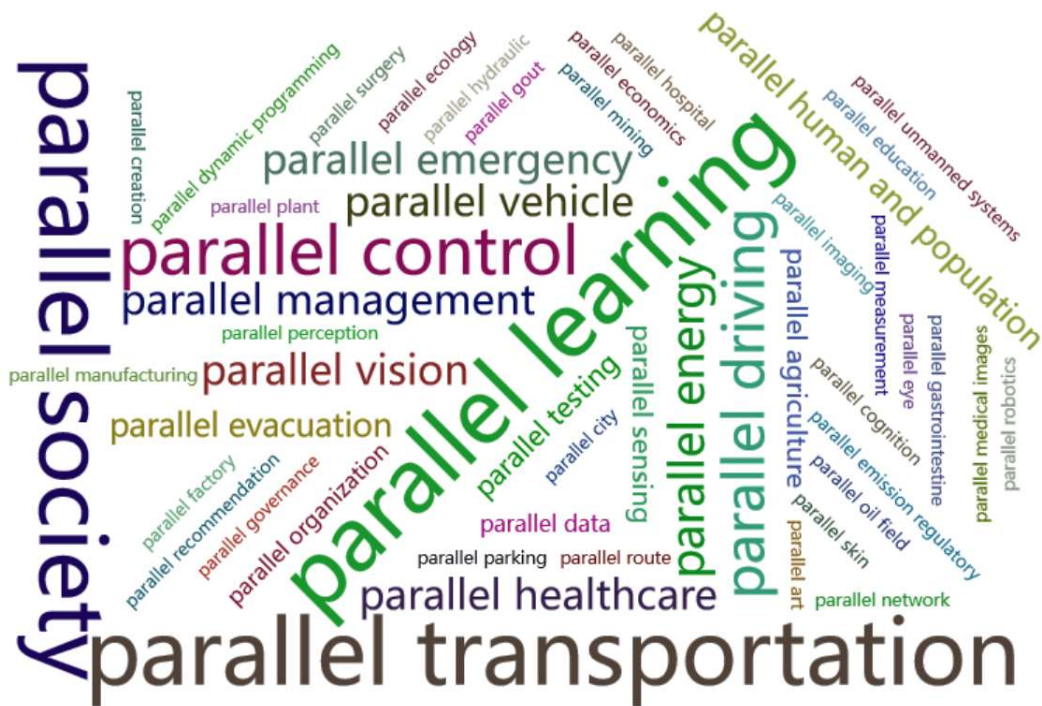


Figure 3. The word cloud of topics.

It is evident that the topics can be categorized into two distinct groups: parallel technologies and parallel applications. The former integrates advanced technologies from diverse disciplines with the parallel systems method to enhance it from different aspects. Meanwhile, the inherent defects of these technologies are alleviated after integrated with the parallel systems. The parallel applications utilize the parallel systems method in various fields to address practical issues, including those related to control and management. The annual distribution of publications of parallel technologies and applications is shown in Fig. 4. As evident, the early publications on parallel systems methods (prior to 2016) primarily focused on parallel applications. In terms of parallel technologies, the early publications are only related to parallel control and management, which reflects the initial purpose for the parallel systems method. However, since 2017, more and more parallel technologies such as parallel learning and parallel testing have been proposed and applied in many fields.

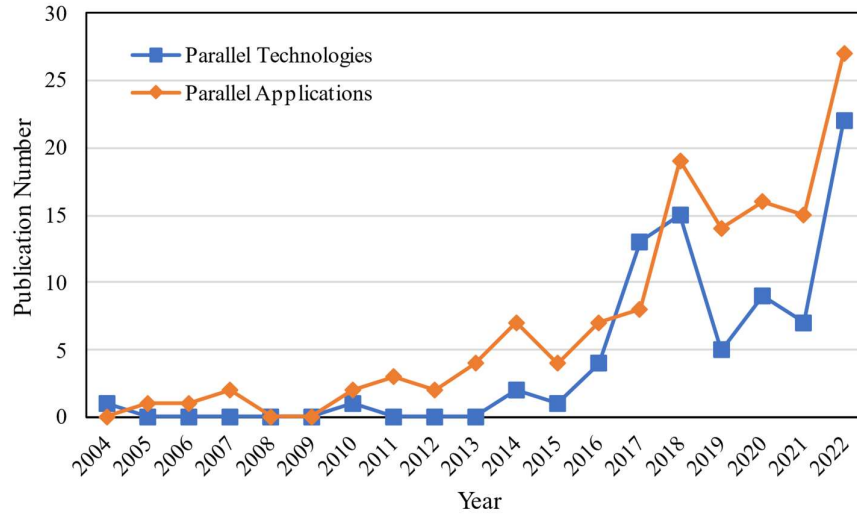


Figure 4. Annual distribution of publications of parallel technologies and applications.

The number of publications on various parallel technologies is presented in Tab. 1. Based on the publication count and content analysis, five major parallel technologies have been selected and introduced in separate sections: parallel learning, parallel blockchain, parallel control and management, parallel sensing, and parallel cognition. Among these, the largest number of publications belongs to parallel learning since its inception in 2017. It is essentially the technical embodiment of parallel intelligence and can provide intelligent decision-making capacity for the parallel systems method. The parallel blockchain is the novel decentralized infrastructure for the parallel systems. It provides a secure and trustworthy environment for the interaction of elements from different spaces within parallel systems. Parallel control and management represent the initial objective and function of the parallel systems method. Parallel sensing is the important technology that mapping elements in the actual system into artificial systems. Parallel cognition represents a crucial stride towards exploring social dimensions through the ACP approach. Despite the limited number of publications on parallel cognition, we have provided a comprehensive introduction to it in this review. Numerous publications exist on other parallel technologies, including parallel vision, parallel testing, parallel organization, and parallel data. However, there is some overlap

between the publications of these technologies and those of the five major parallel technologies, and their concepts or implementations exhibit similarities with those of the five major parallel technologies. For instance, the parallel learning is the important supporting technology for both parallel vision and parallel data. Therefore, to be concise, only the five major parallel technologies are presented in a separate section while other parallel technologies are integrated into the introduction of these five major ones.

Table 1. The number of publications on different parallel technologies

Topics	Publications Number	Topics	Publications Number
parallel learning	37	parallel data	6
parallel blockchain	18	parallel cognition	5
parallel control	18	parallel measurement	4
parallel management	15	parallel dynamic programming	3
parallel vision	14	parallel imaging	3
parallel sensing	7	parallel perception	3
parallel testing	7	parallel governance	1
parallel organization	6		

We have categorized the majority of parallel application topics into five fields: parallel transportation, parallel industry, parallel society, parallel healthcare, and parallel agriculture as presented in Tab. 2. In this review, we provide a comprehensive overview of these five fields with a detailed introduction to their respective applications. Although the number of publications in parallel agriculture is limited and the scope of topics covered is narrow, they still be introduced in detail. These publications have established a comprehensive framework for this field, providing a solid foundation for its future development. Furthermore, certain topics related to parallel applications do not fit within the aforementioned five categories, such as parallel art and parallel education. Due to limited literature in these fields, we have refrained from dedicating a separate section to them.

Table 2. The five major fields and their topics

Fields	Topics	Fields	Topics
parallel transportation	parallel vehicle	parallel society	parallel city
	parallel driving		parallel economics
	parallel routing		parallel evacuation
	parallel parking		parallel emergency
	parallel recommendation		parallel human and population
	parallel emission regulatory		parallel
parallel industry	parallel mining	parallel healthcare	gastrointestine
	parallel energy		parallel gout
	parallel factory		parallel eye
	parallel hydraulic		parallel surgery
	parallel oil field		parallel skin
	parallel		parallel hospital
	manufacturing		parallel medical images
	parallel agriculture	parallel plant	

**References:**

1. Wnuk, K., and Garrepalli, T. (2018). Knowledge management in software testing: a systematic snowball literature review. *e-Informatica Software Engineering Journal*, 12: 51-78.
2. Wohlin, C., (2014). Guidelines for snowballing in systematic literature studies and a replication in software engineering. *Proceedings of the 18th international conference on evaluation and assessment in software engineering*, 1-10.
3. Yang, L., Chen, S., and Wang, X., et al. (2019). Digital Twins and Parallel Systems: State of the Art, Comparisons and Prospect. *Acta Automatica Sinica* 45, 2001–2031.
4. Yang, J., Wang, X., and Wang, Y., et al. (2023). Parallel Intelligence and CPSS in 30 Years: An ACP Approach. *Acta Automatica Sinica* 49, 614–634.