

Figure S1. The research of the off-target effect of NTRK1 shRNA.

(A, B and C) The qRT-PCR and WB showed that NTRK1 shRNA-1 had the highest transfection efficiency in the hippocampus of the mice. $n = 3$. $** P < 0.01$.

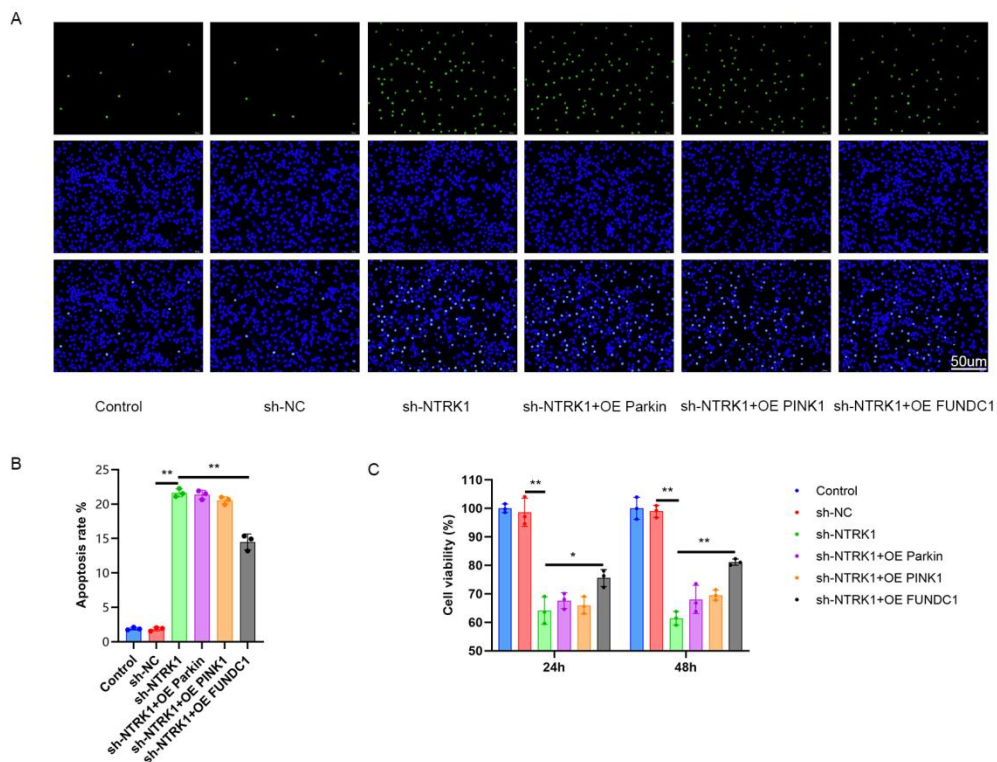


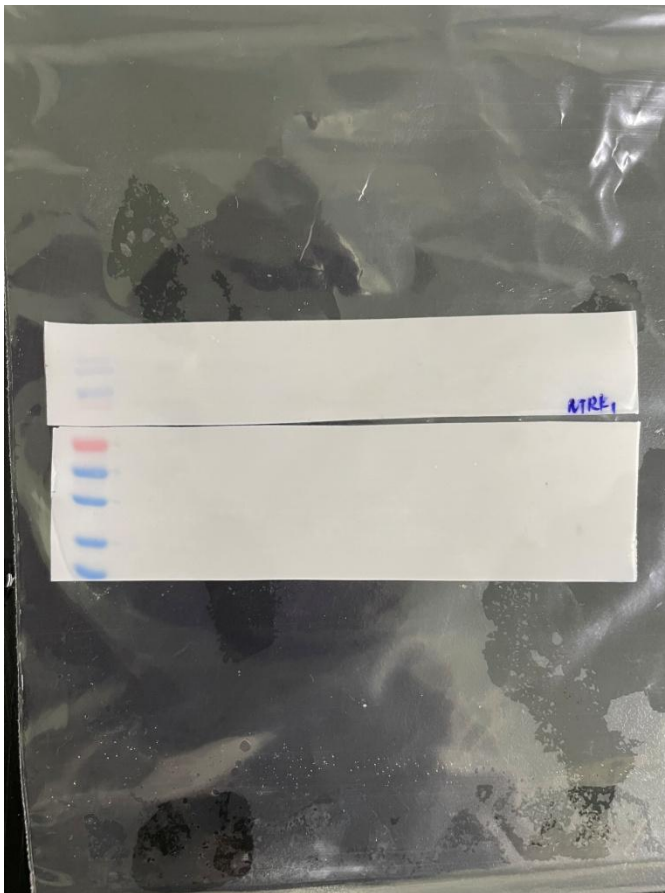
Figure S2. NTRK1 knockdown might suppress the mitophagy in mouse neurons by mediating FUNDC1.

(A and B) TUNEL assay illustrated that NTRK1 knockdown might be through mediating FUNDC1 (rather than Parkin and PINK1) to suppress mitophagy to induce the apoptosis of mouse neurons. $n = 3$. (C) CCK-8 assay indicated that NTRK1 knockdown might suppress mitophagy of mouse neurons to attenuate its viability by mediating FUNDC1 (rather than Parkin and PINK1). $n = 3$. * $P < 0.05$. ** $P < 0.01$.

Supplementary Materials 1: Uncropped Western Blot Images

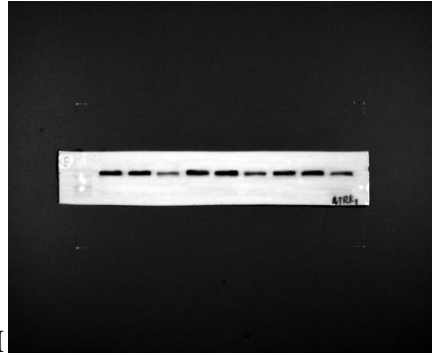
Legend: All the original images of western blotting (WB) used in the figures of the main text figures. The following images correspond to WB pictures with corresponding panel numbers in the main text figures. The text on the right of the image corresponds to the name of the corresponding primary antibody.

Figure 1A:



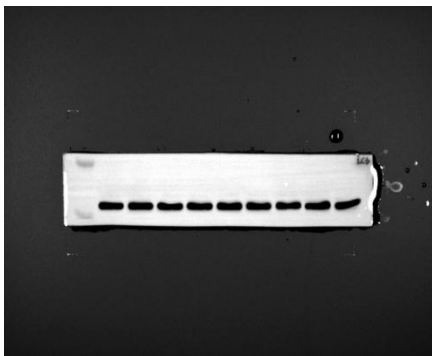
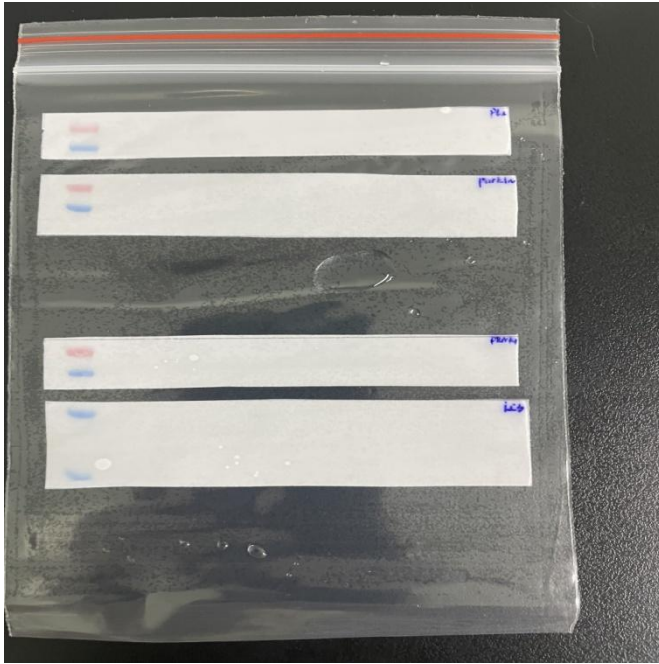


GAPDH



NTRK1

Figure 2I:



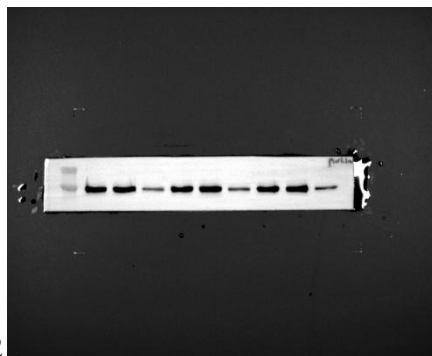
COXIV



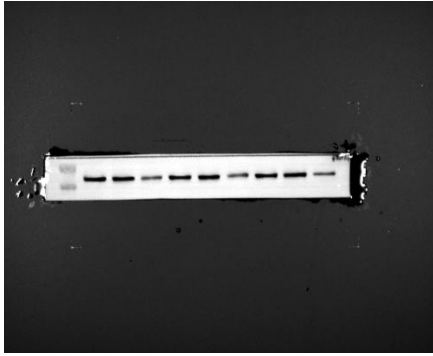
LC3



P62

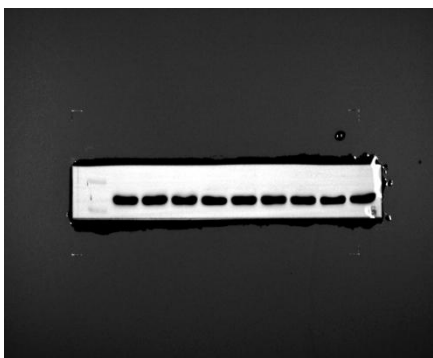
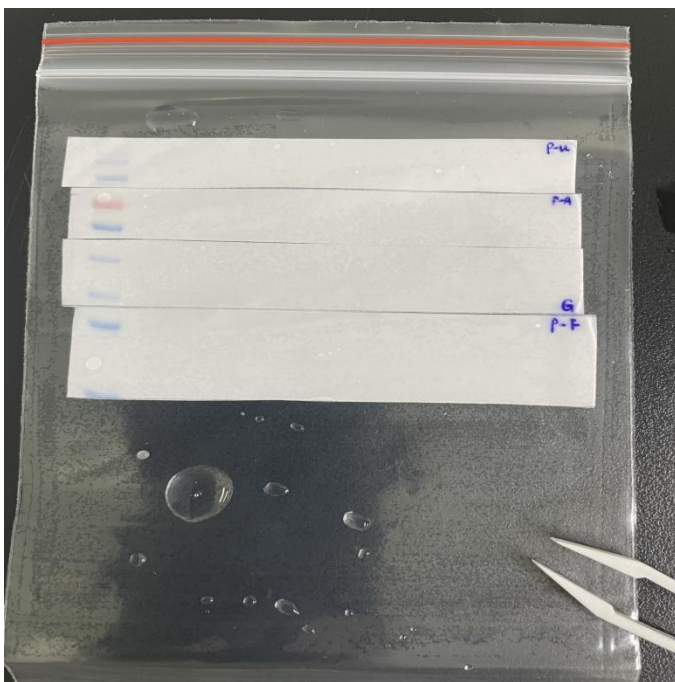


Parkin



PINK1

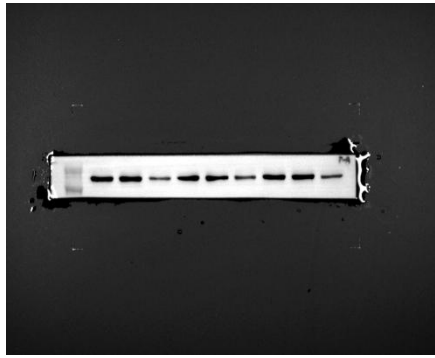
Figure 2K:



GAPDH



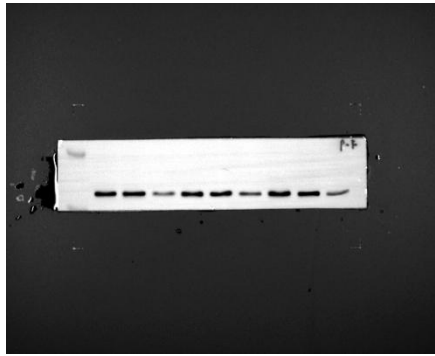
AMPK



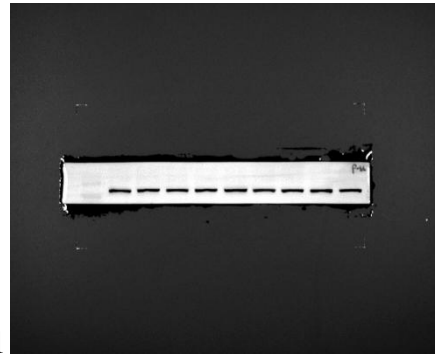
p-AMPK



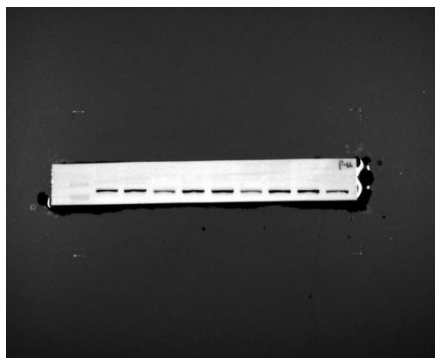
FUNDC1



p-FUNDC1

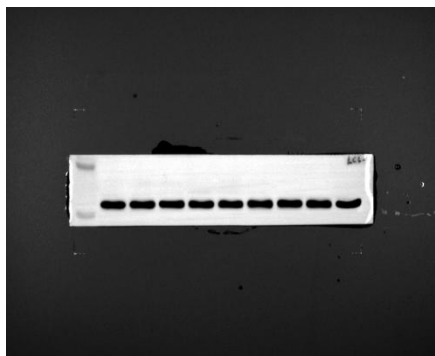


ULK1



p-ULK1

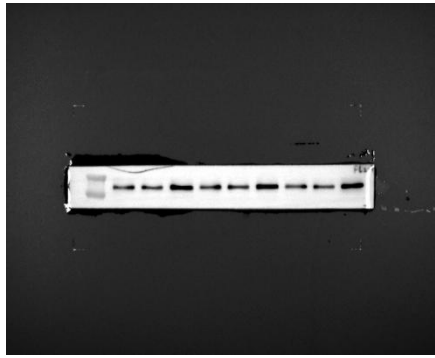
Figure 5A:



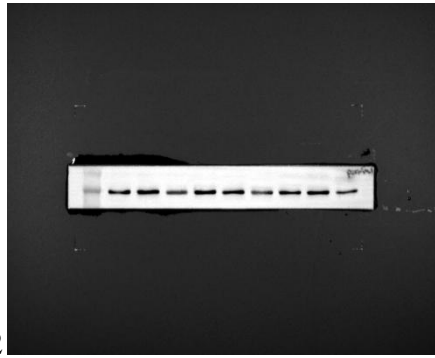
COXIV



LC3



P62



Parkin

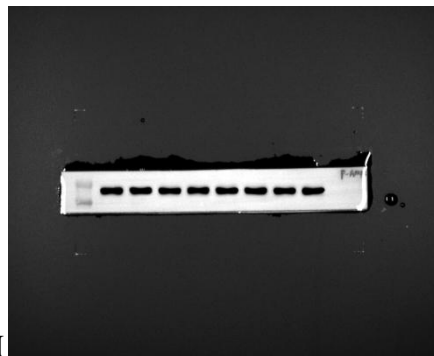


PINK1

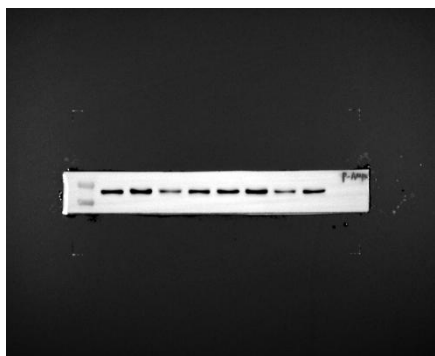
Figure 6A:



GAPDH



AMPK



p-AMPK



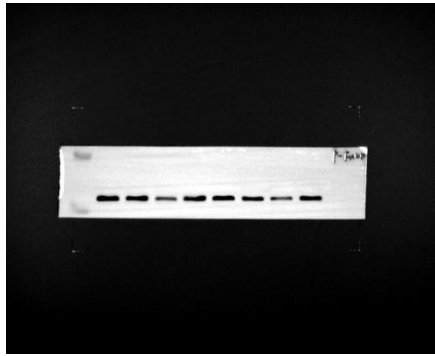
ULK1



p-ULK1



FUNDC1

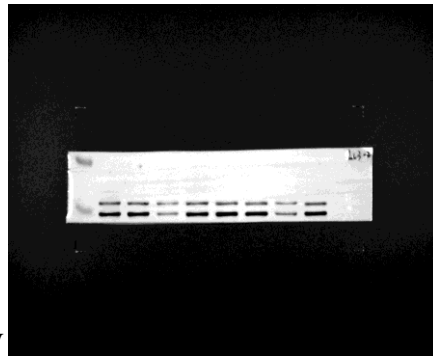


p-FUNDC1

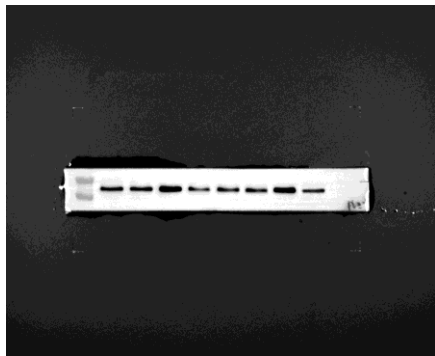
Figure 6C:



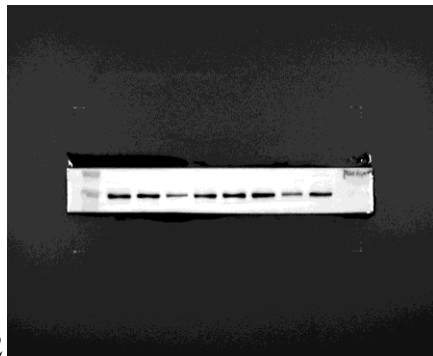
COXIV



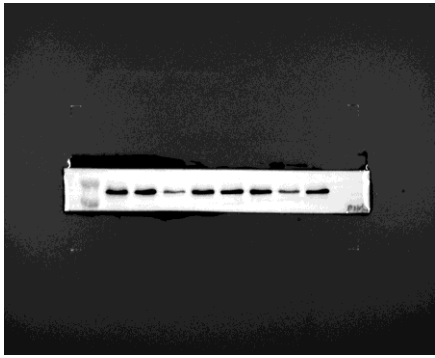
LC3



P62



Parkin

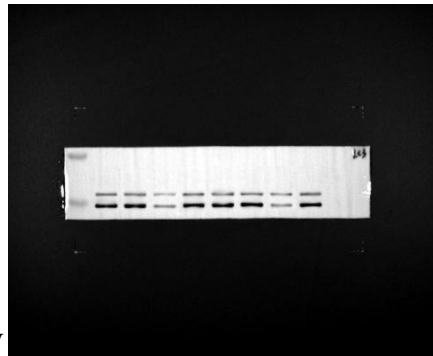


PINK1

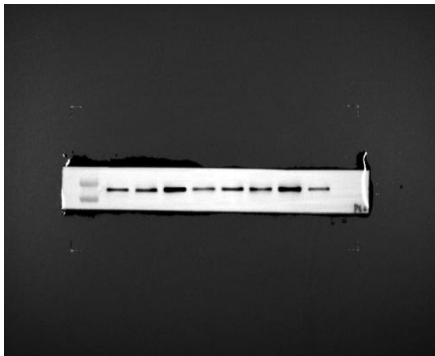
Figure 7H:



COXIV



LC3



P62

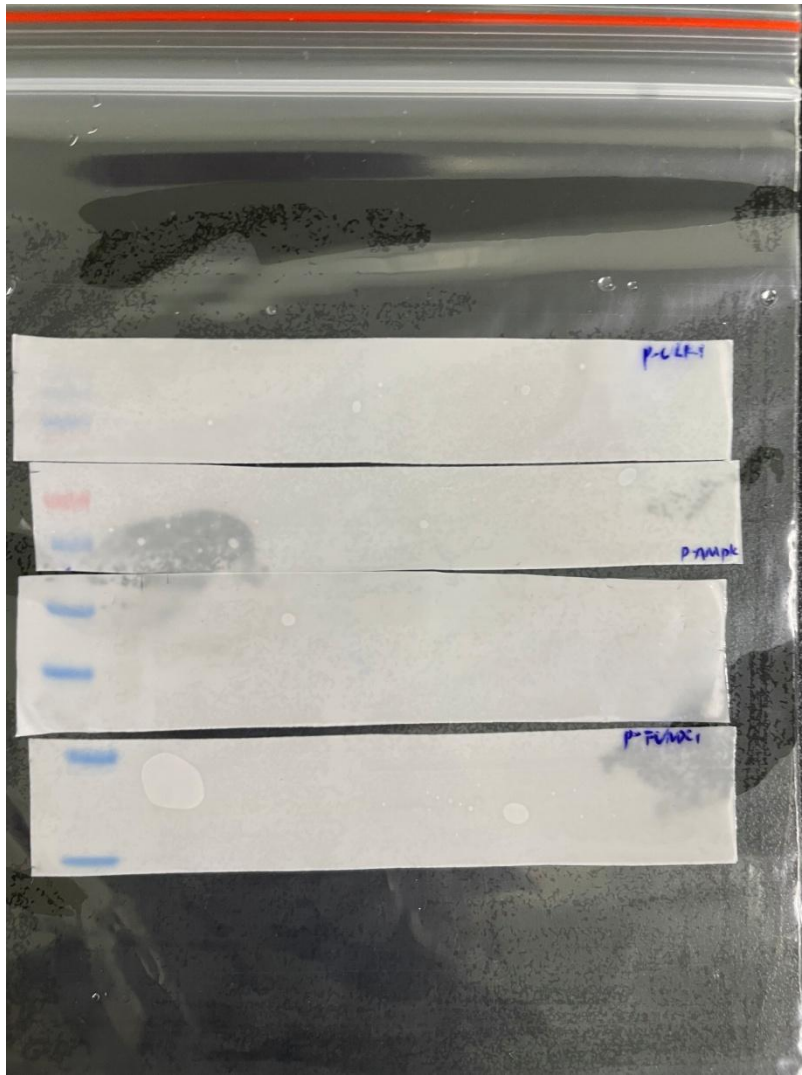


Parkin



PINK1

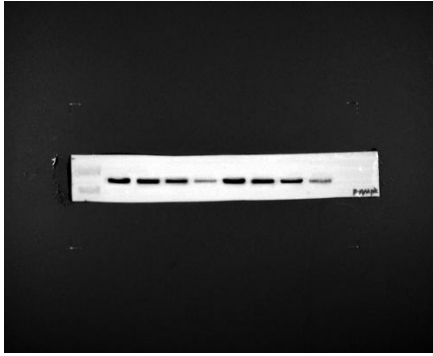
Figure 8F:



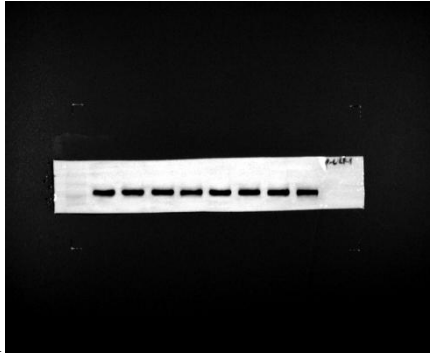
GAPDH



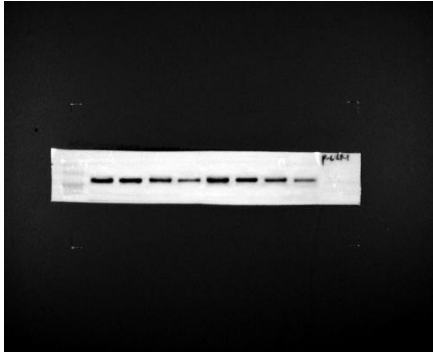
AMPK



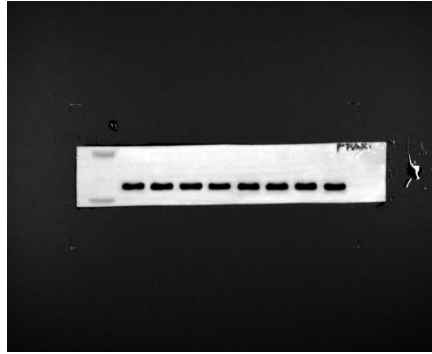
p-AMPK



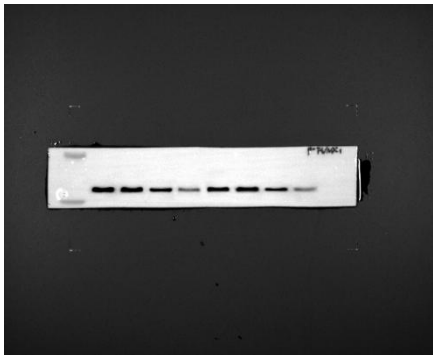
ULK1



p-ULK1



FUNDC1



p-FUNDC1