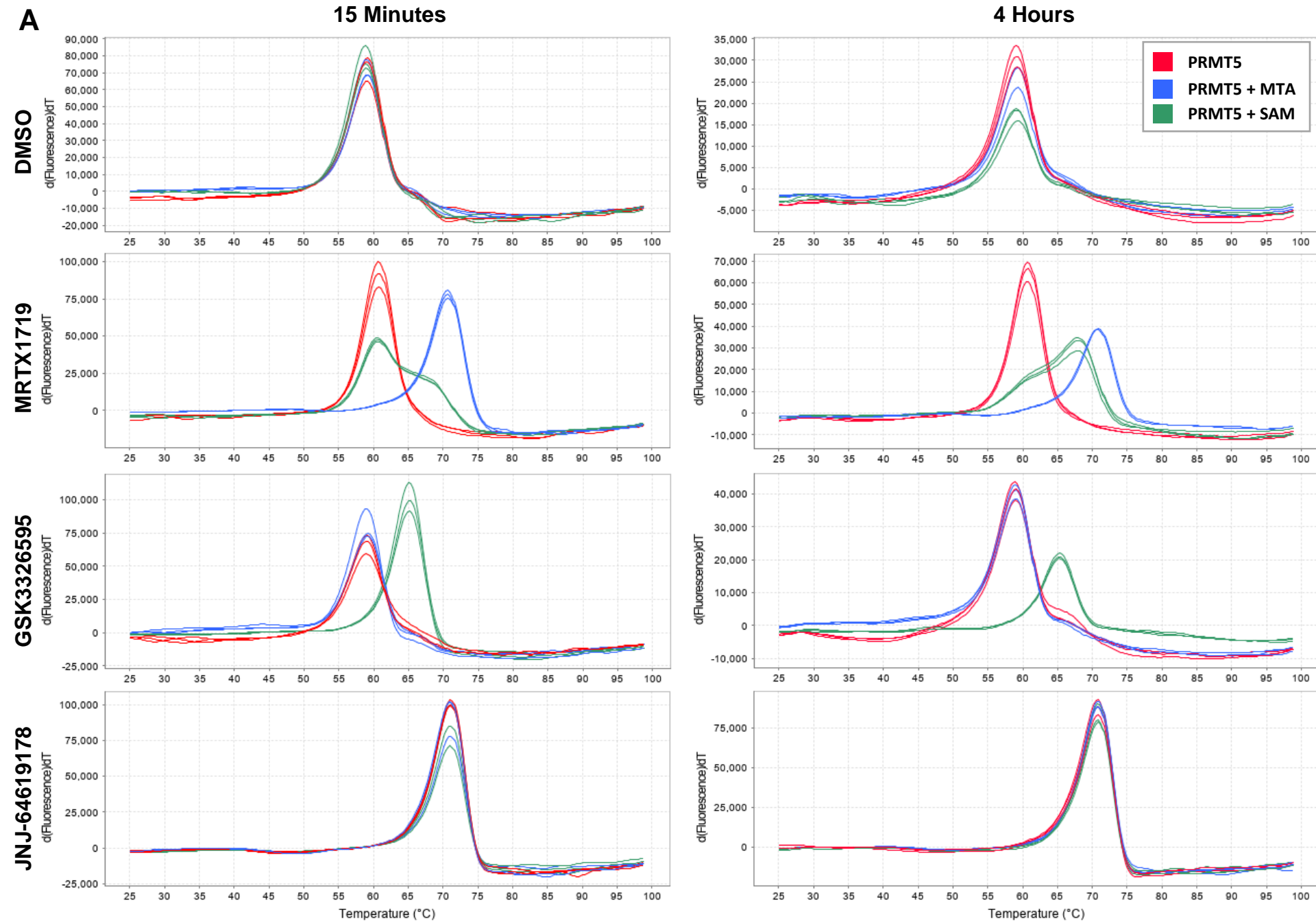


Figure S3



B

Δ TmD (C)

	Timepoint (hr)	
	0.25	4
PRMT5 (+):		
DMSO	0	0
DMSO + MTA	0	0
DMSO + SAM	0	0
MRTX1719	1.7	1.5
MRTX1719 + MTA	11.6	11.6
MRTX1719 + SAM	1.5	8.7
GSK-595	0	0
GSK-595 + MTA	0	0
GSK-595 + SAM	6	6.1
JNJ-9178	12	11.6
JNJ-9178 + MTA	12	11.7
JNJ-9178 + SAM	12	11.7

Figure S3. A. Thermal melt curves of apo-PRMT5, MTA-bound PRMT5 or SAM-bound PRMT5 in the presence of DMSO, 10 μ M MRTX1719, 10 μ M JNJ-64619178, or 10 μ M GSK3326595 incubated for 15 minutes or 4 hours. B. Table summarizing the melting temperature derivative change (Δ TmD) between DMSO control and indicated PRMT5 inhibitor conditions at each timepoint.