

Figure S4

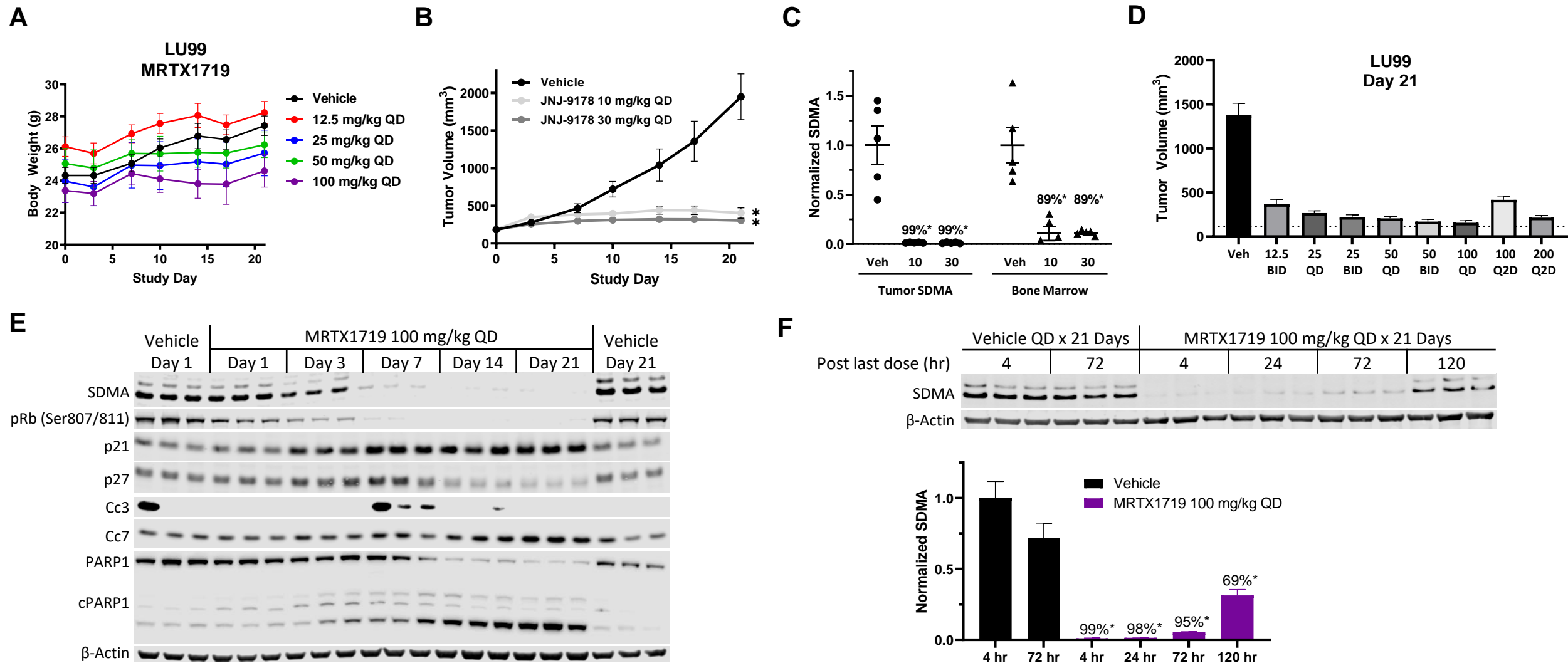


Figure S4. A. Mean body weights \pm standard deviation for treatment groups over the course of the study shown in Figure 2A & B. B. JNJ-64619178 at the indicated doses or vehicle was administered QD via daily oral gavage to mice bearing established LU99 cell line-derived tumor xenografts. Data presented as mean tumor volume \pm SEM shown over time. Statistics were determined using a two-way ANOVA with significance indicated (*, $p < 0.05$). C. LU99 tumors or mouse bone marrow were collected four hours post dose and SDMA was analyzed by immunoblot. Data shown represent the average of 3 tumors per treatment group \pm SEM. Statistics were determined using a two-tailed Student's t-test with significance indicated (*, $p < 0.05$). D. Day 21 LU99 xenograft tumor volume for vehicle or MRTX1719 treatment at the indicated doses and schedules. Dashed line indicates mean tumor volume on study day 0. E. Western blot analysis of SDMA along with proliferation and apoptosis biomarkers in tumors from three mice treated with vehicle or 100 mg/kg QD MRTX1719 over a time course. F. Western blot analysis and quantification by densitometry of SDMA in tumor collected 4, 24, 72 or 120 hours post last dose from mice treated with 100 mg/kg QD MRTX1719 for 21 days. Statistics were determined using a two-tailed Student's t-test with significance indicated (*, $p < 0.05$).