

Supplemental tables and figures

Supplemental Table 1. Demographics and baseline characteristics among patients with stage II-III A NSCLC in the non-22C3-biomarker-evaluable population (BEP) when tumor cell programmed death-ligand 1 (PD-L1) expression was identified by the SP263 assay.

| | | PD-L1 TC $\geq 1\%$ | | PD-L1 TC 1%-49% | | PD-L1 TC $\geq 50\%$ | |
|----------------------------|--|---------------------|---------------|-----------------|---------------|----------------------|---------------|
| | | Atezo (n=106) | BSC (n=98) | Atezo (n=57) | BSC (n=46) | Atezo (n=49) | BSC (n=52) |
| Age | Median | 62 (40-81) | 64 (33-84) | 61 (40-81) | 61.5 (33-75) | 63 (43-75) | 65 (37-84) |
| | (range), y ≥ 65 y | 41 (38.7) | 49 (50.0) | 20 (35.1) | 20 (43.5) | 21 (42.9) | 29 (55.8) |
| Sex | Male | 73 (68.9) | 59 (60.2) | 35 (61.4) | 25 (54.4) | 38 (77.6) | 34 (65.4) |
| Race | White | 29 (27.4) | 40 (40.8) | 15 (26.3) | 14 (30.4) | 14 (28.6) | 26 (50.0) |
| | Asian | 76 (71.7) | 56 (57.1) | 41 (71.9) | 30 (65.2) | 35 (71.4) | 26 (50.0) |
| ECOG PS | 0 | 70 (66.0) | 60 (61.2) | 39 (68.4) | 26 (56.5) | 31 (63.3) | 34 (65.4) |
| | 1 | 36 (34.0) | 38 (38.8) | 18 (31.6) | 20 (43.5) | 18 (36.7) | 18 (34.6) |
| Histology | Squamous | 34 (32.1) | 29 (29.6) | 14 (24.6) | 14 (30.4) | 20 (40.8) | 15 (28.8) |
| | Non-squamous | 72 (67.9) | 69 (70.4) | 43 (75.4) | 32 (69.6) | 29 (59.2) | 37 (71.2) |
| Stage | II | 64 (60.4) | 44 (44.9) | 36 (63.2) | 19 (41.3) | 28 (57.1) | 25 (48.1) |
| | III A | 42 (39.6) | 54 (55.1) | 21 (36.8) | 27 (58.7) | 21 (42.9) | 27 (51.9) |
| Tobacco use history | Never | 27 (25.5) | 20 (20.4) | 20 (35.1) | 12 (26.1) | 7 (14.3) | 8 (15.4) |
| | Current/previous | 79 (74.5) | 78 (79.6) | 37 (64.9) | 34 (73.9) | 42 (85.7) | 44 (84.6) |
| EGFR mutation | Positive | 13 (12.3) | 11 (11.2) | 9 (15.8) | 8 (17.4) | 4 (8.2) | 3 (5.8) |
| | Negative | 56 (52.8) | 61 (62.2) | 30 (52.6) | 25 (54.3) | 26 (53.1) | 36 (69.2) |

Confidential | Not for distribution

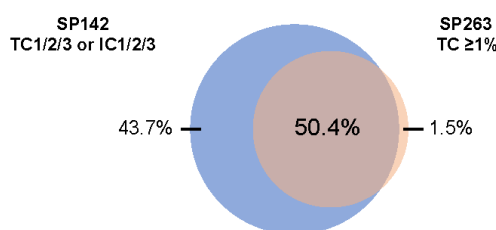
| | | | | | | | |
|--------------------|-----------------|-----------|-----------|-----------|-----------|-----------|-----------|
| status | Unknown | 37 (34.9) | 26 (26.5) | 18 (31.6) | 13 (28.3) | 19 (38.8) | 13 (25.0) |
| ALK | Positive | 9 (8.5) | 5 (5.1) | 7 (12.3) | 3 (6.5) | 2 (4.1) | 2 (3.8) |
| rearrange- | Negative | 64 (60.4) | 62 (63.3) | 35 (61.4) | 29 (63.0) | 29 (59.2) | 33 (63.5) |
| ment status | Unknown | 33 (31.1) | 31 (31.6) | 15 (26.3) | 14 (30.4) | 18 (36.7) | 17 (32.7) |

Values reported are n (%) unless otherwise specified. Atezo, atezolizumab; BSC, best supportive care; ECOG PS, Eastern Cooperative Oncology Group performance status; TC, tumor cell.

Confidential | Not for distribution

Supplemental Figure 1. A) Venn diagram display the proportion of patients in the Stage II-IIIa combined-BEP that were (A) PD-L1 positive (TC1/2/3 or IC1/2/3) by only SP142 and not SP263, by only SP263 and not SP142 or double positive by both assays; (B) PD-L1 high (TC3 or IC3) by only SP142 and not SP263, by only SP263 and not SP142 or double positive by both assays; (C) PD-L1 positive by only SP142 and not 22C3, by only 22C3 and not SP142 or double positive by both assays; (D) PD-L1 high by only SP142 and not 22C3, by only 22C3 and not SP142 or double positive by both assays. Positive, negative, and overall agreement show correlation of the assays at each of the cutoffs, with ranges shown in parentheses. IC, tumor-infiltrating immune cells; TC, tumor cells; TPS, tumor proportion score.

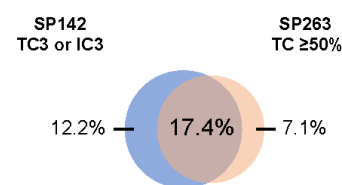
A



| Patients, % (n) | SP263 TC <1% | SP263 TC ≥1% |
|--------------------------|-----------------|-----------------|
| SP142 TC0 and IC0 | 4.4 % (23) | 1.5% (8) |
| SP142 TC1/2/3 or IC1/2/3 | 43.7% (229) | 50.4% (264) |

| SP142 TC1/2/3 or IC1/2/3 and SP263 TC ≥1% | |
|---|---------------|
| Positive Agreement | 97% (94%-99%) |
| Negative Agreement | 9% (6%-13%) |
| Overall Agreement | 55% (50%-59%) |

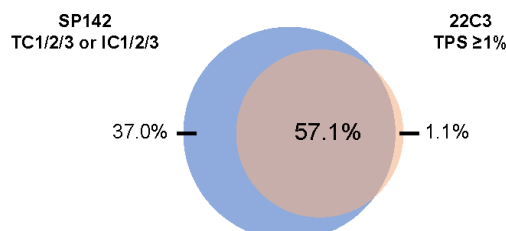
B



| Patients, % (n) | SP263 TC <50% | SP263 TC ≥50% |
|--------------------------|------------------|------------------|
| SP142 TC0/1/2 or IC0/1/2 | 63.4% (332) | 7.1% (37) |
| SP142 TC3 or IC3 | 12.2% (64) | 17.4% (91) |

| SP142 TC3 or IC3 and SP263 TC ≥50% | |
|------------------------------------|---------------|
| Positive Agreement | 71% (62%-79%) |
| Negative Agreement | 84% (80%-87%) |
| Overall Agreement | 81% (77%-84%) |

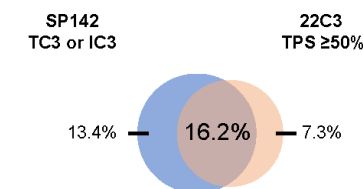
C



| Patients, % (n) | 22C3 TPS <1% | 22C3 TPS ≥1% |
|--------------------------|-----------------|-----------------|
| SP142 TC0 and IC0 | 4.8 % (25) | 1.1% (6) |
| SP142 TC1/2/3 or IC1/2/3 | 37.0% (194) | 57.1% (299) |

| SP142 TC1/2/3 or IC1/2/3 and 22C3 TPS ≥1% | |
|---|---------------|
| Positive Agreement | 98% (96%-99%) |
| Negative Agreement | 11% (8%-16%) |
| Overall Agreement | 62% (58%-66%) |

D



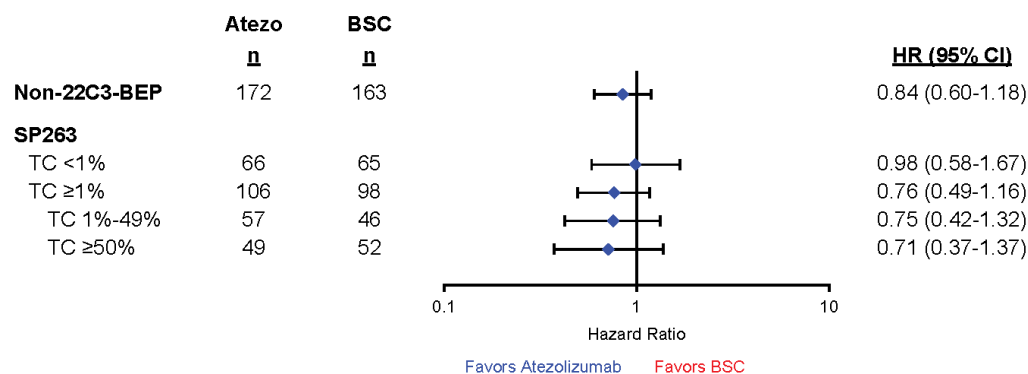
| Patients, % (n) | 22C3 TPS <50% | 22C3 TPS ≥50% |
|--------------------------|------------------|------------------|
| SP142 TC0/1/2 or IC0/1/2 | 63.2% (331) | 7.3% (38) |
| SP142 TC3 or IC3 | 13.4% (70) | 16.2% (85) |

| SP142 TC3 or IC3 and 22C3 TPS ≥50% | |
|------------------------------------|---------------|
| Positive Agreement | 69% (60%-77%) |
| Negative Agreement | 83% (78%-86%) |
| Overall Agreement | 79% (76%-83%) |

Confidential | Not for distribution

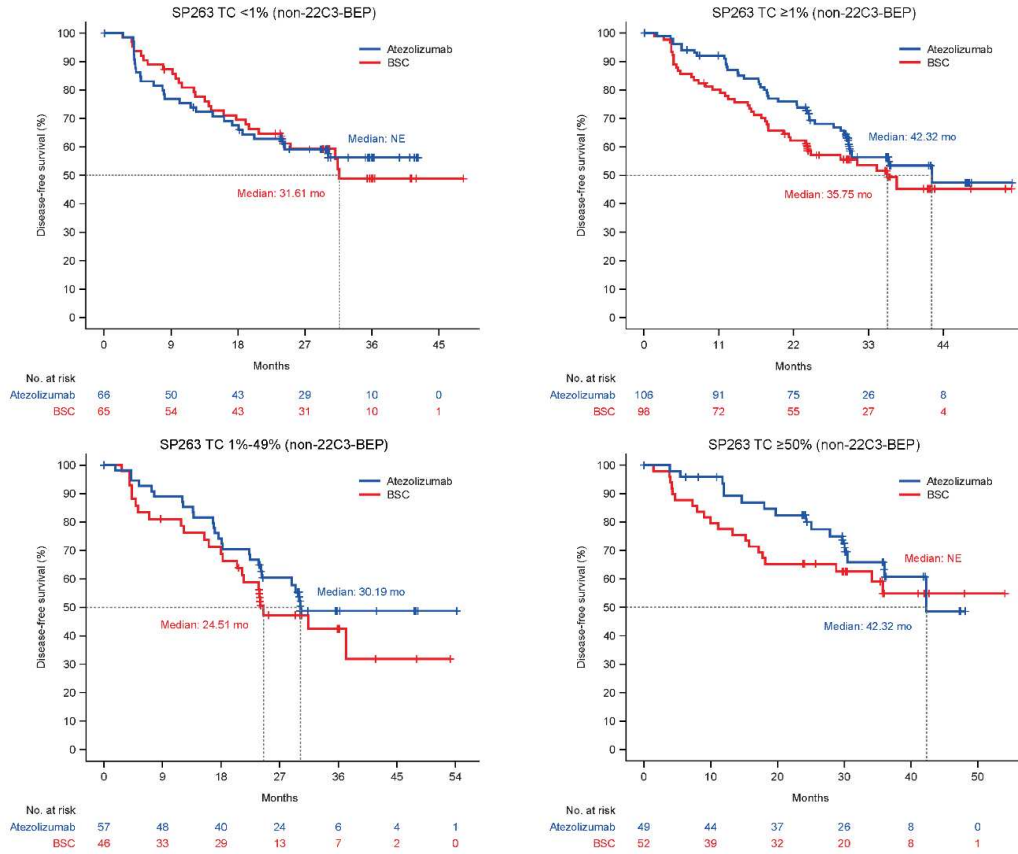
Supplemental Figure 2. (A) Unstratified hazard ratios (HRs) for disease-free survival (DFS) for patients with stage II-IIIa NSCLC in the non-22C3-biomarker-evaluable population (BEP) and among the programmed death-ligand 1 (PD-L1)-negative, -positive, -low, or -high subgroups of the non-22C3-BEP as identified by the SP263 assay. (B) Kaplan-Meier curves for patients with stage II-IIIa NSCLC in the non-22C3-BEP for PD-L1-negative, -positive, -low, or -high subgroups according to the SP263 assay. BSC, best supportive care; NE, non-estimable; TC, tumor cell.

A



Confidential | Not for distribution

B



Confidential | Not for distribution