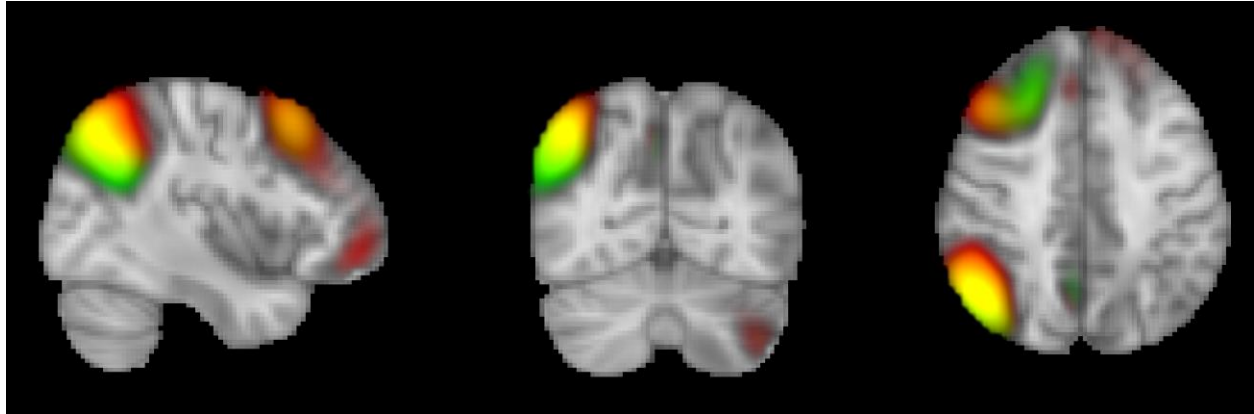


**Supplementary 9.** An example of two highly spatially similar ICNs that resemble parallel interdigitated distributed networks previously observed at the subject level (Braga and Buckner, 2017). Red and Green represent two ICNs in the RGB color code.



## 1. References

Braga, R.M., Buckner, R.L., 2017. Parallel Interdigitated Distributed Networks within the Individual Estimated by Intrinsic Functional Connectivity. *Neuron* 95, 457-471.e455.