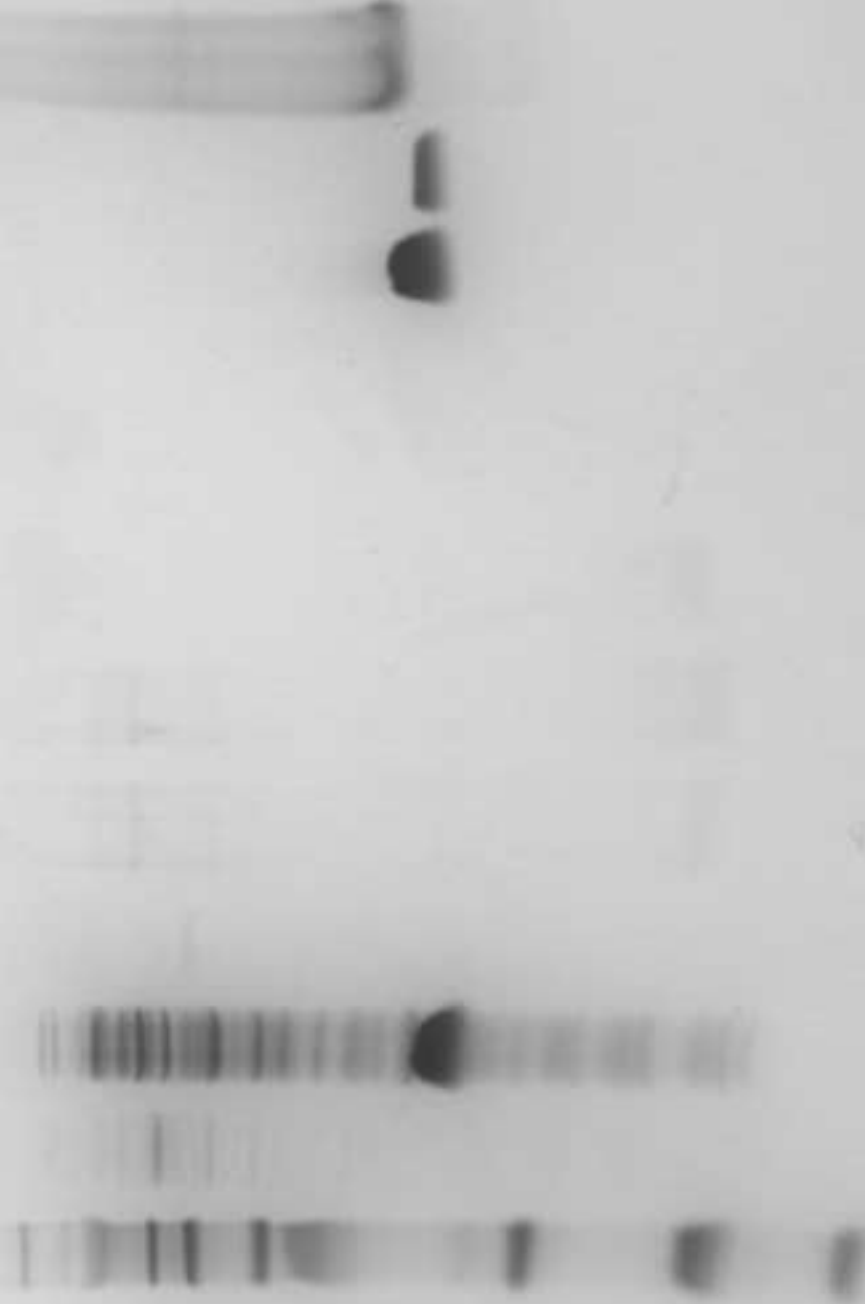


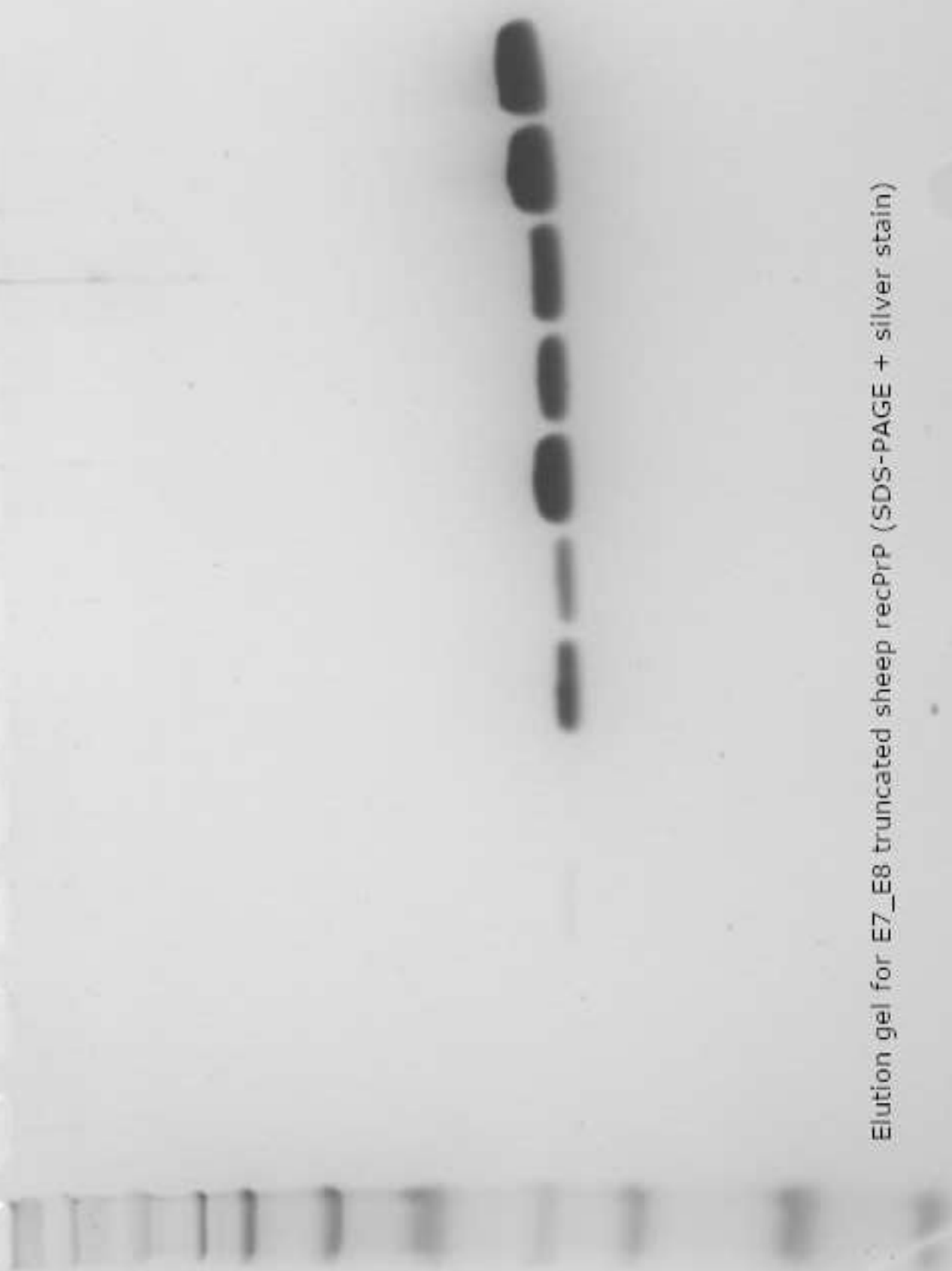
Purification gel for E7_E8 truncated sheep recPrP
(SDS-PAGE + coomassie blue stain)

M 1 2 3 4 5 6 7 8 9 10 11



Key: M, molecular weight marker SeeBlue Plus2 pre-stained protein standard (Fisher Scientific); lanes 1-11 represent samples taken during stages of E7_E8 recPrP purification: 1, uninduced cells; 2, induced cells; 3, supernatant; 4, resin bedding; 5, resin flow through; 6, denaturing step; 7, gradient refolding; 8, isocratic refolding; 9, elution fraction E7; 10, elution fraction E8; 11, resin wash.
Image captured using Biorad gel doc XR system, Quantity One software (v4.6.7).
Annotations in GIMP (v2.10.34). This raw image was used to generate S2 Fig, panel A.

M 1 2 3 4 5 6 7 8 9 10 11



Elution gel for E7_E8 truncated sheep recPrP (SDS-PAGE + silver stain)

Key: M, molecular weight marker, SeeBlue Plus2 pre-stained protein standard (Fisher Scientific). Lanes 1-9 represent eluted fractions E1-E9; 10, dialysed recPrP stock; 11, filtered recPrP stock. Image captured using Biorad gel doc XR system, Quantity One software (v4.6.7). Annotations in GIMP (v2.10.34). This raw image was used to generate S2 Fig, panel B.