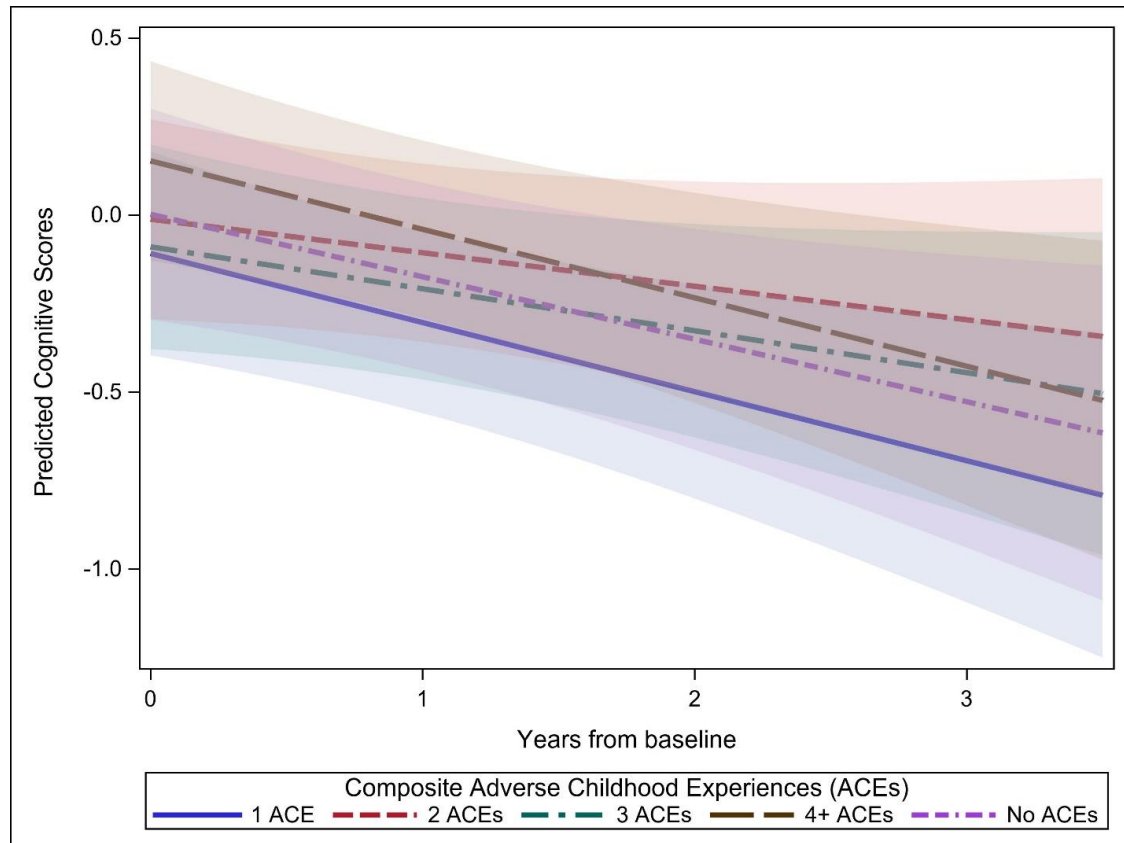


Supplemental Figure 1: Prediction plot of linear mixed models estimate for the association of composite adverse childhood experiences (ACEs) with verbal episodic memory across 3 waves



Adjusted for years from baseline, baseline age centered at mean, gender/sex, childhood SES, and composite childhood support

Supplemental Table 1: Linear mixed model with random intercept and slope of the association of individual adverse childhood experiences (ACEs) with domain-specific cognition adjusted for time, gender/sex, and parental education

	Executive Function			Verbal Episodic Memory		
	Cross-Sectional					
	Model 1 β (95% CI)	Model 2 β (95% CI)	Model 3 β (95% CI)	Model 1 β (95% CI)	Model 2 β (95% CI)	Model 3 β (95% CI)
<b>Parent Separated</b>	-0.035 (-0.166, 0.095)	-0.040 (-0.169, 0.089)	-0.011 (-0.140, 0.118)	-0.006 (-0.140, 0.128)	-0.014 (-0.142, 0.115)	0.017 (-0.112, 0.147)
<b>Parent Remarried</b>	-0.007 (-0.152, 0.139)	-0.017 (-0.161, 0.127)	0.000 (-0.142, 0.142)	0.062 (-0.087, 0.212)	0.044 (-0.100, 0.188)	0.061 (-0.082, 0.203)
<b>Witnessed Violence</b>	0.065 (-0.071, 0.200)	0.052 (-0.082, 0.186)	0.070 (-0.062, 0.201)	0.131 (-0.009, 0.270)	0.106 (-0.028, 0.240)	0.121 (-0.012, 0.253)
<b>Substance Abuse</b>	0.118 (-0.029, 0.266)	0.126 (-0.02, 0.272)	0.119 (-0.025, 0.262)	0.096 (-0.056, 0.247)	0.111 (-0.035, 0.256)	0.107 (-0.037, 0.251)
<b>Loss Job</b>	0.014 (-0.162, 0.190)	0.007 (-0.167, 0.181)	0.034 (-0.137, 0.206)	0.029 (-0.152, 0.210)	0.016 (-0.158, 0.190)	0.033 (-0.139, 0.205)
<b>Parent Jail</b>	-0.120 (-0.359, 0.118)	-0.116 (-0.352, 0.12)	-0.064 (-0.298, 0.169)	-0.034 (-0.279, 0.211)	-0.022 (-0.257, 0.213)	0.020 (-0.214, 0.254)
<b>Serious Family Illness</b>	-0.014 (-0.146, 0.118)	-0.018 (-0.148, 0.112)	-0.011 (-0.139, 0.117)	0.032 (-0.103, 0.167)	0.025 (-0.105, 0.155)	0.029 (-0.099, 0.157)
<b>Death Mother</b>	-0.007 (-0.275, 0.262)	-0.033 (-0.299, 0.233)	-0.028 (-0.289, 0.233)	0.105 (-0.171, 0.381)	0.057 (-0.208, 0.322)	0.058 (-0.204, 0.320)
<b>Death Father</b>	-0.002 (-0.213, 0.209)	-0.006 (-0.215, 0.203)	0.025 (-0.180, 0.231)	-0.019 (-0.236, 0.199)	-0.024 (-0.233, 0.185)	-0.002 (-0.209, 0.205)
	Longitudinal					
	Model 1 β (95% CI)	Model 2 β (95% CI)	Model 3 β (95% CI)	Model 1 β (95% CI)	Model 2 β (95% CI)	Model 3 β (95% CI)
<b>Parent Separated</b>	-0.006 (-0.140, 0.128)	-0.014 (-0.142, 0.115)	0.017 (-0.112, 0.147)	0.018 (-0.025, 0.062)	0.018 (-0.025, 0.062)	0.018 (-0.026, 0.062)
<b>Parent Remarried</b>	0.062 (-0.087, 0.212)	0.044 (-0.100, 0.188)	0.061 (-0.082, 0.203)	0.045 (-0.005, 0.094)	0.045 (-0.004, 0.095)	0.045 (-0.005, 0.094)
<b>Witnessed Violence</b>	0.131 (-0.009, 0.270)	0.106 (-0.028, 0.240)	0.121 (-0.012, 0.253)	0.026 (-0.019, 0.072)	0.027 (-0.019, 0.072)	0.027 (-0.019, 0.072)
<b>Substance Abuse</b>	0.096 (-0.056, 0.247)	0.111 (-0.035, 0.256)	0.107 (-0.037, 0.251)	0.034 (-0.016, 0.083)	0.033 (-0.016, 0.083)	0.033 (-0.016, 0.083)
<b>Loss Job</b>	0.029 (-0.152, 0.210)	0.016 (-0.158, 0.190)	0.033 (-0.139, 0.205)	0.004 (-0.055, 0.063)	0.004 (-0.055, 0.063)	0.003 (-0.055, 0.062)
<b>Parent Jail</b>	-0.034 (-0.279, 0.211)	-0.022 (-0.257, 0.213)	0.020 (-0.214, 0.254)	0.067 (-0.015, 0.149)	0.066 (-0.016, 0.148)	0.067 (-0.015, 0.149)
<b>Serious Family Illness</b>	0.032 (-0.103, 0.167)	0.025 (-0.105, 0.155)	0.029 (-0.099, 0.157)	0.038 (-0.006, 0.082)	0.038 (-0.006, 0.082)	0.038 (-0.006, 0.083)
<b>Death Mother</b>	0.105 (-0.171, 0.381)	0.057 (-0.208, 0.322)	0.058 (-0.204, 0.320)	-0.005 (-0.096, 0.087)	-0.005 (-0.096, 0.086)	-0.004 (-0.095, 0.087)
<b>Death Father</b>	-0.019 (-0.236, 0.199)	-0.024 (-0.233, 0.185)	-0.002 (-0.209, 0.205)	0.005 (-0.067, 0.076)	0.006 (-0.066, 0.077)	0.004 (-0.067, 0.076)

Model 1: Adjusted for baseline age centered at mean,

Model 2: Model 1 + sex,

Model 3: Model 2 + parental education