

Figure S1. Comparison of the differences in the operative times between the unilateral and bilateral surgical approaches in different studies (before sensitivity analysis). SMD, standardized mean difference; CI, confidence interval.

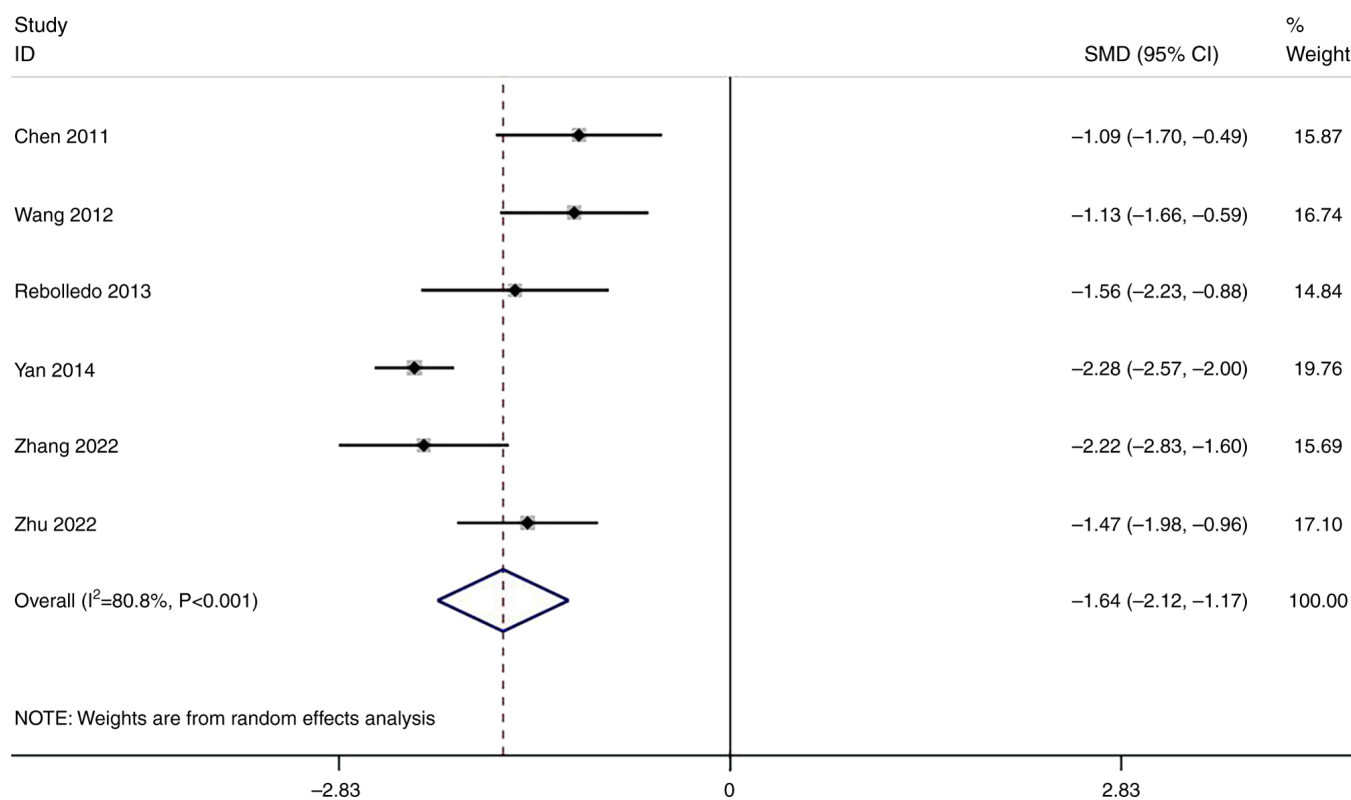


Figure S2. Sensitivity analysis of the comparison of the differences in the operative time between the unilateral and bilateral surgical approaches in different studies. The red point indicates an excluded study.

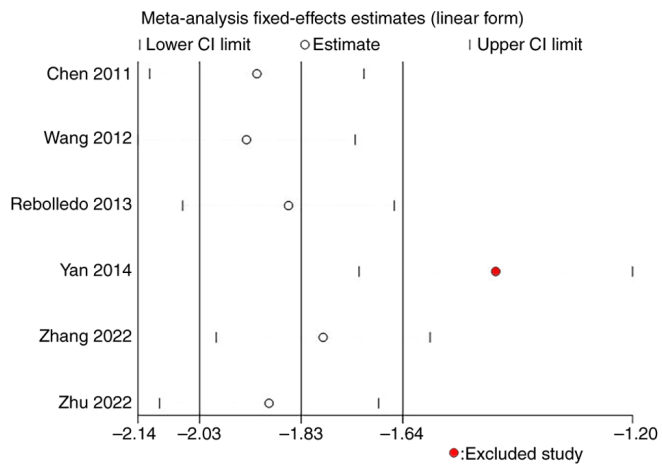


Figure S3. Comparison of the differences in the cement injection volume between the unilateral and bilateral surgical approaches in different studies (before sensitivity analysis). SMD, standardized mean difference; CI, confidence interval.

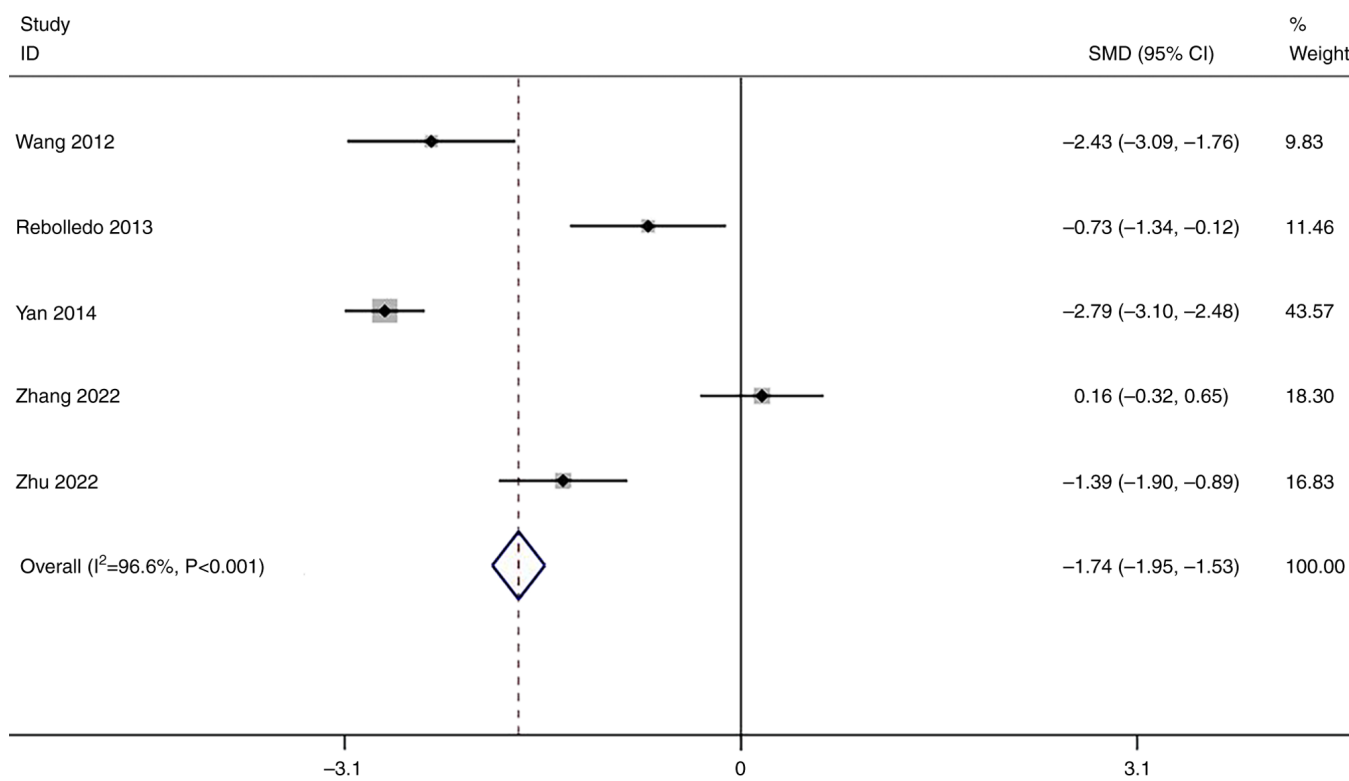


Figure S4. Sensitivity analysis of the comparison of the differences in the cement injection volume between the unilateral and bilateral surgical approaches in different studies. The red point indicates an excluded study.

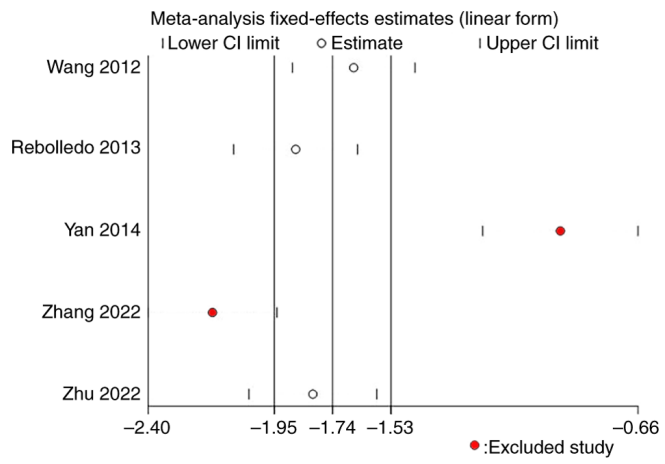


Figure S5. Sensitivity analysis of the comparison of the differences in the VASs between the unilateral and bilateral surgical approaches in different studies. VAS, visual analogue scale score.

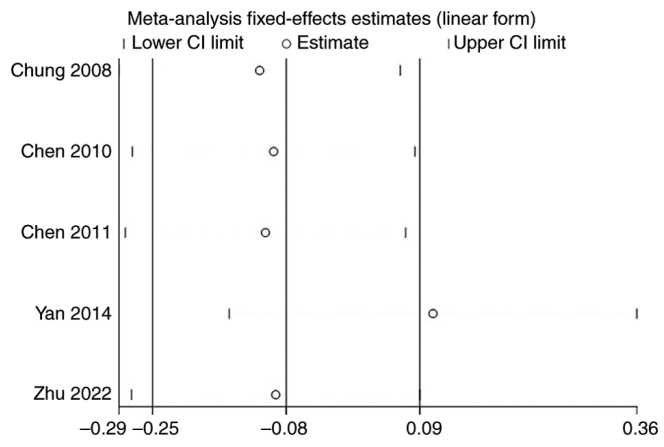


Figure S6. Sensitivity analysis of the comparison of the differences in the post-KPAs between the unilateral and bilateral surgical approaches in different studies. KPA, kyphotic angle.

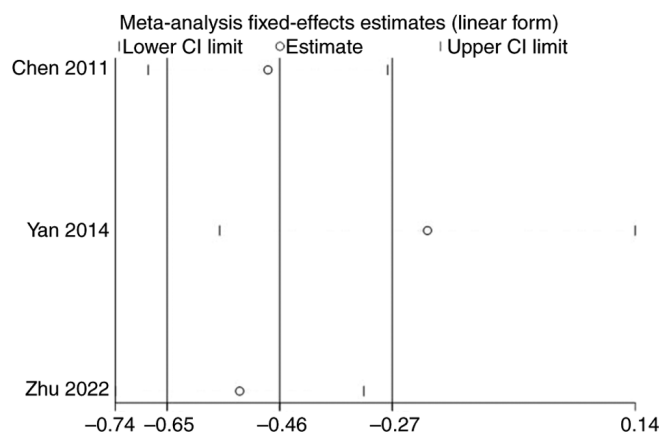


Figure S7. Sensitivity analysis of the comparison of the differences in the height restoration rates between the unilateral and bilateral surgical approaches in different studies.

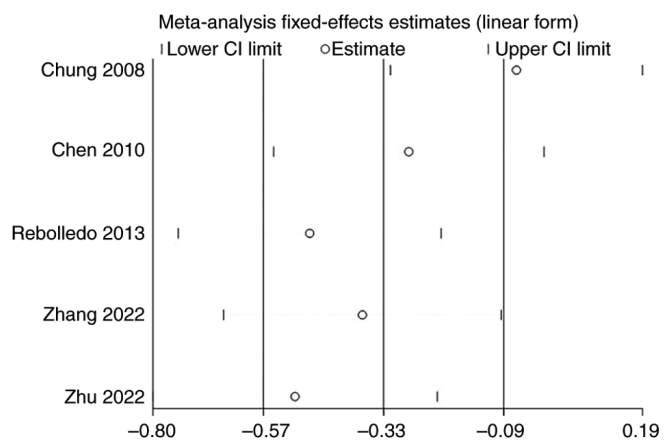


Figure S8. Sensitivity analysis of the comparison of the differences in the incidence of cement leakage between the unilateral and bilateral surgical approaches in different studies. CI, confidence interval.

