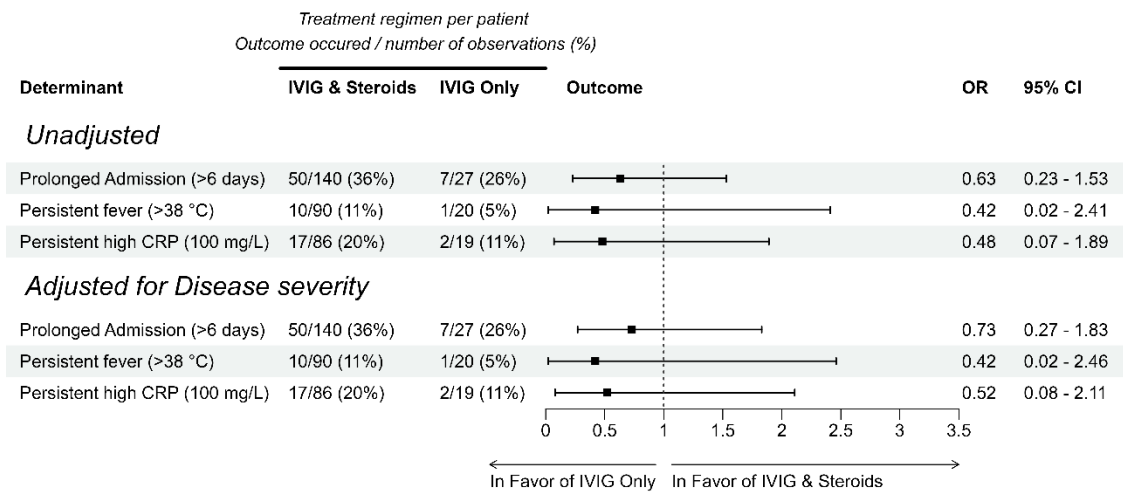


Supplemental Digital Content 6. Figure: Outcome of treatment of MIS-C with IVIG only or IVIG plus systemic steroids



Outcomes measures of different treatment modalities based on unadjusted and adjusted logistic regression (IVIG versus IVIG & systemic corticosteroids). Outcome measures are prolonged admission (> 6 days after start treatment); persistent fever (> 38 °C) after 2 days till 7 days after treatment start; and persistent elevated CRP (>100 mg/L) after 2 days till 7 days after treatment start. Analyses were repeated with addition of disease severity to produce adjusted values. If outcome or date of start therapy (IVIG or IVIG & systemic corticosteroids), was missing the patient was excluded from analysis for that particular outcome.