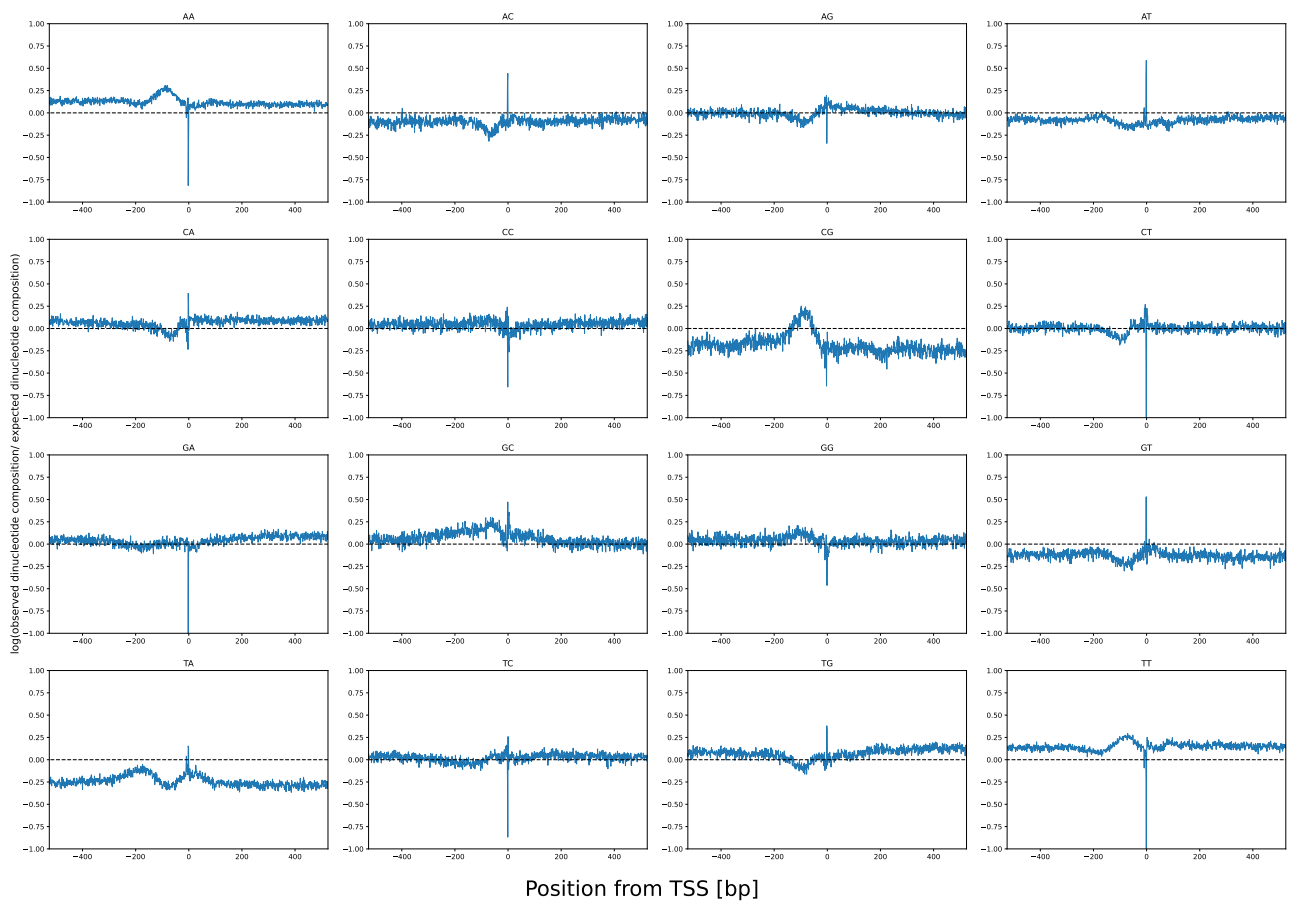
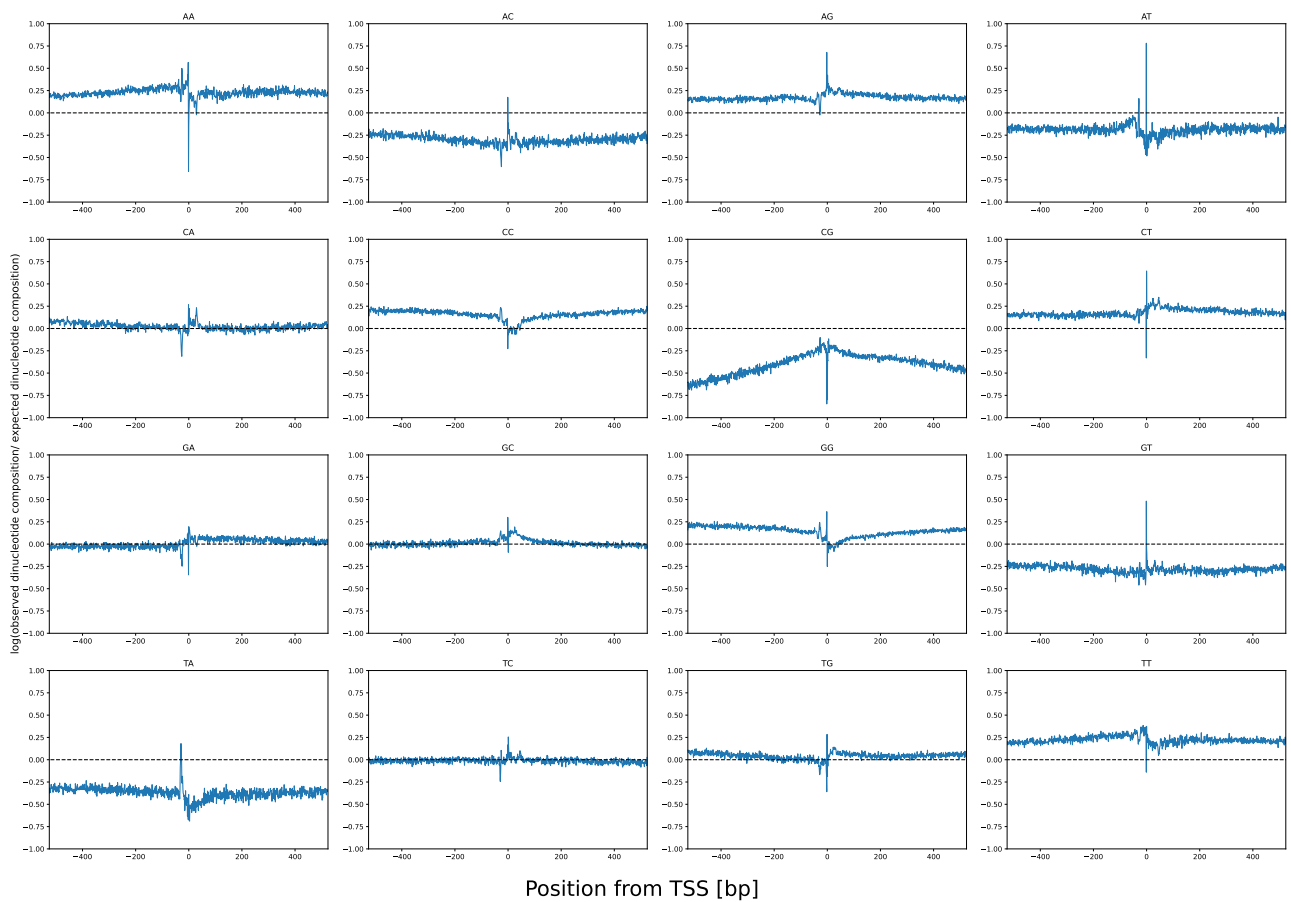


**Supplementary Figure S1. Effects of nucleotide and dinucleotide composition on cyclizability.**

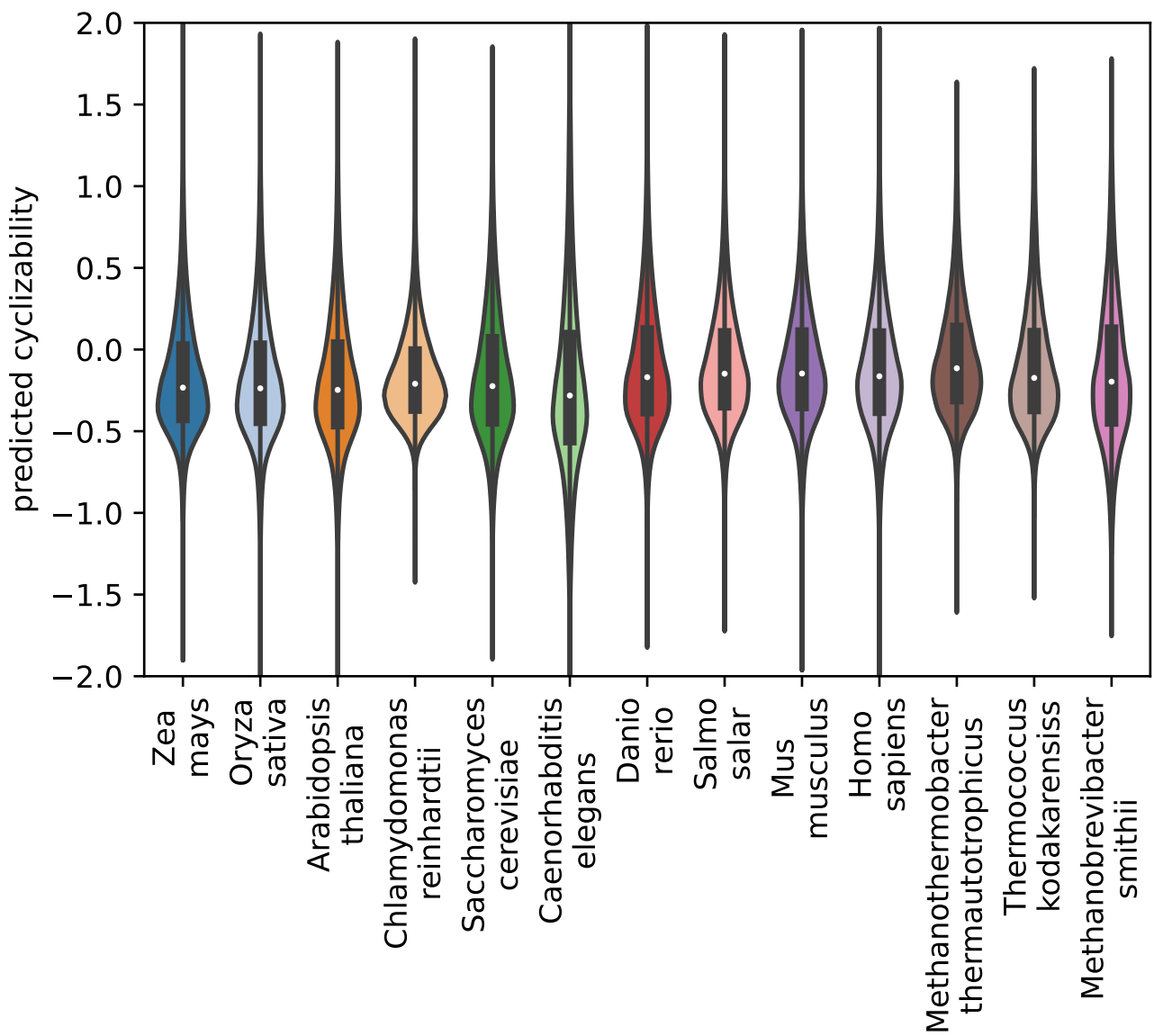
Mean predicted cyclizability around the TSS of all annotated genes containing a 5' UTR of compared to sampled sequences from the average base composition at each position and sampled sequences from the average dinucleotide composition at each position in (a) and (b) *Arabidopsis thaliana*, (c) and (d) *Saccharomyces cerevisiae*, (e) and (f) *Homo sapiens*, respectively.



**Supplementary Figure S2. Relative dinucleotide composition around the TSS in *S. cerevisiae*.**  
 Natural logarithm of the ratio between the observed dinucleotide composition and the expected dinucleotide composition based on nucleotide frequency at each position in *Saccharomyces cerevisiae*.



**Supplementary Figure S3. Relative dinucleotide composition around the TSS in *Homo sapiens*.**  
 Natural logarithm of the ratio between the observed dinucleotide composition and the expected dinucleotide composition based on nucleotide frequency at each position in *Homo sapiens*.



Supplementary Figure S4. Distribution of predicted cyclizability among different species.