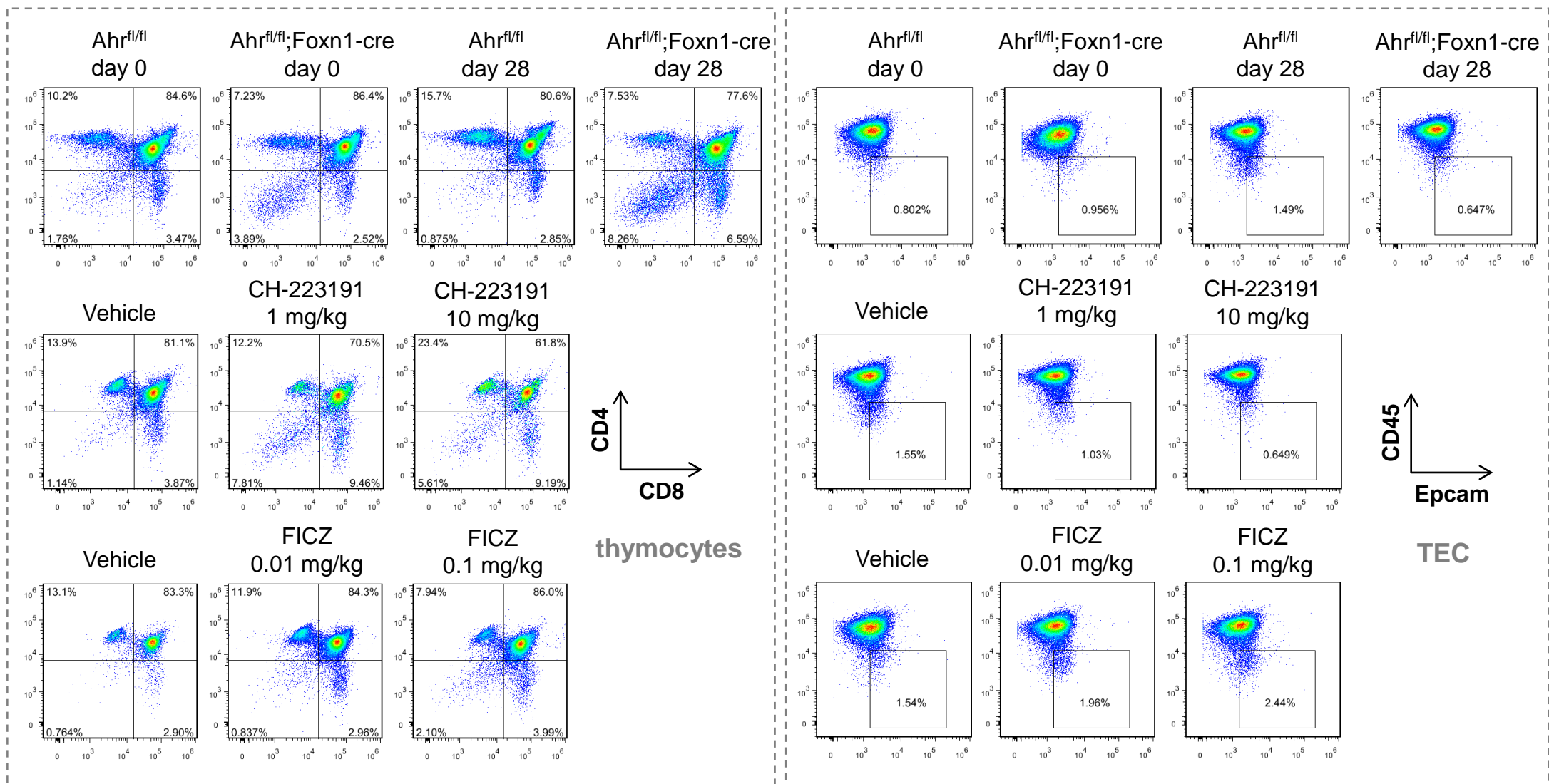
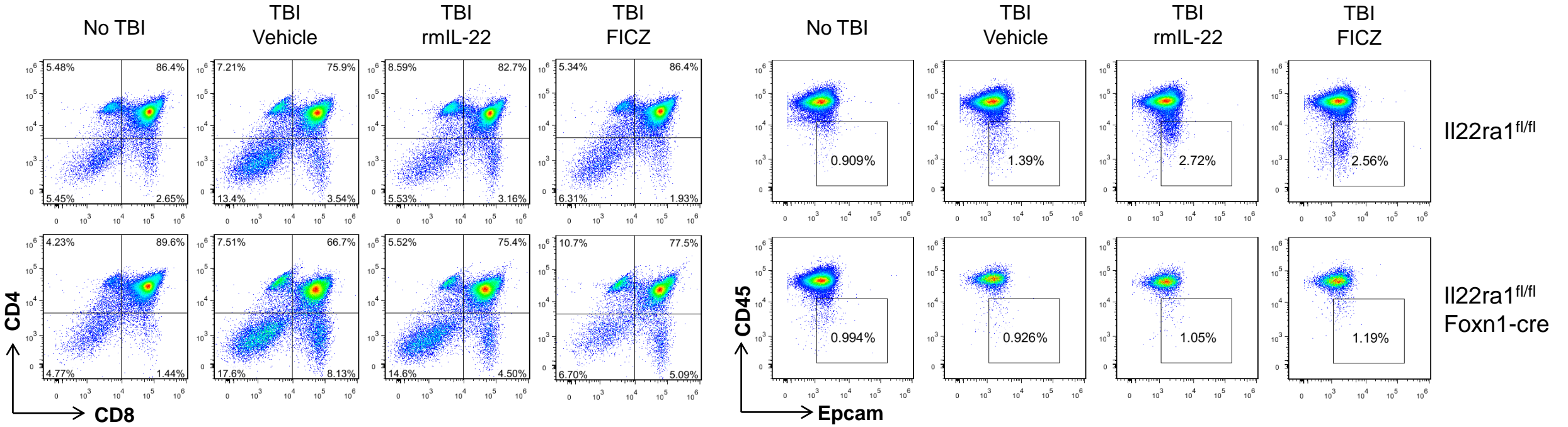


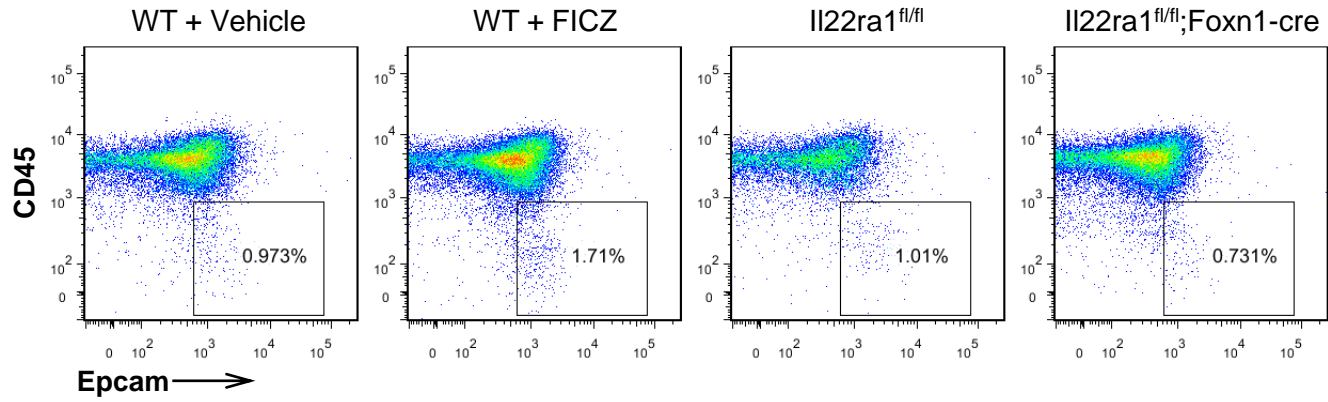
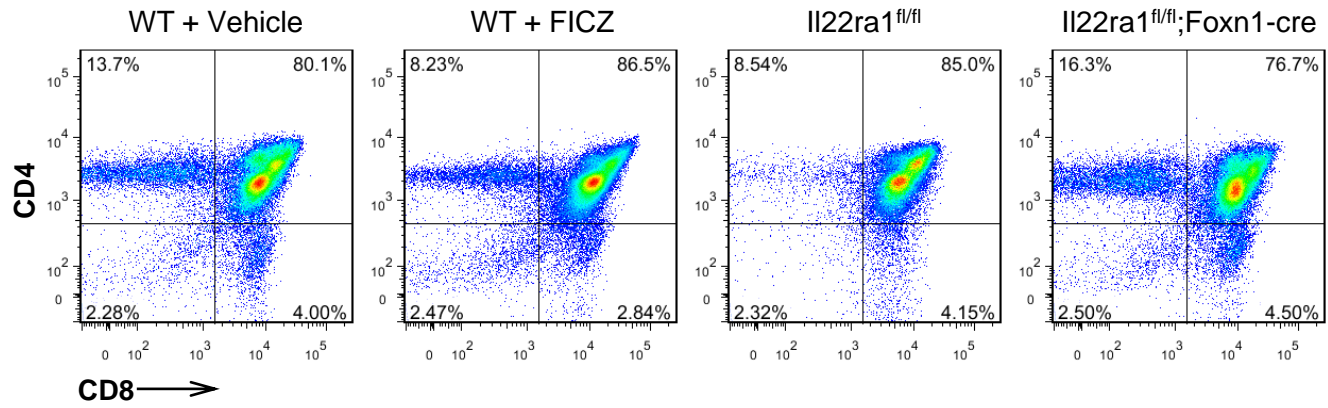
Supplementary Figure 1. Gating strategy in flow cytometric analysis.



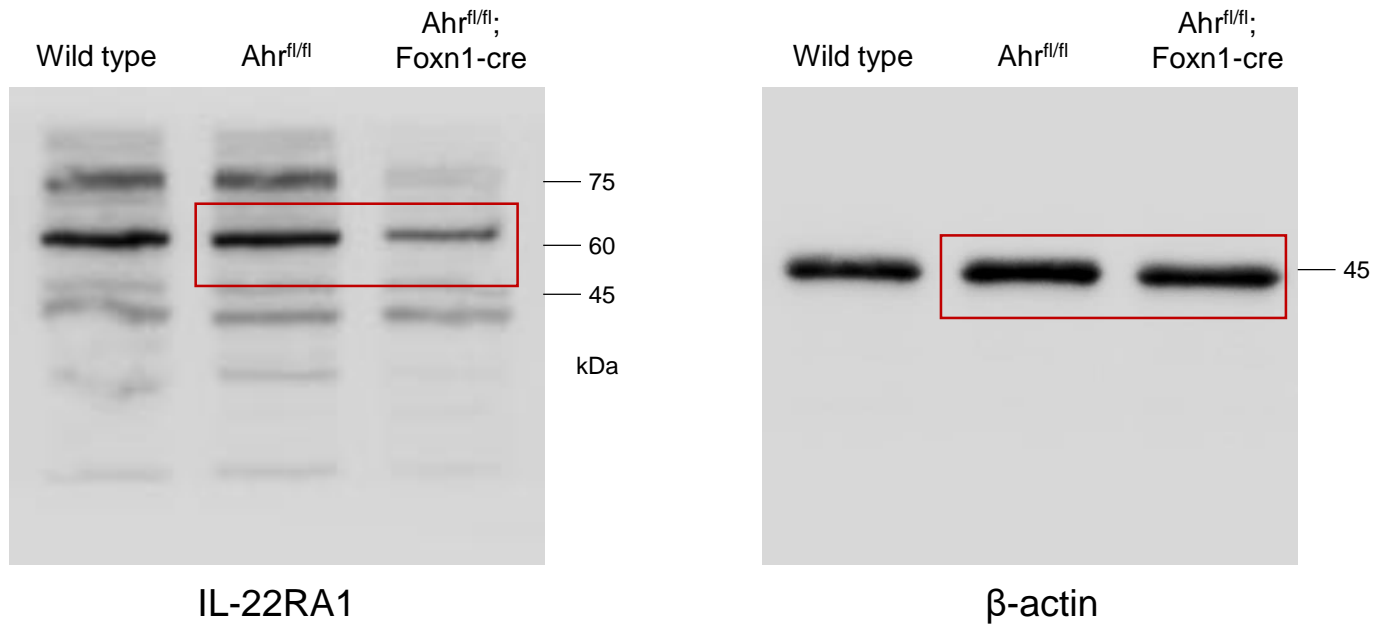
Supplementary Figure 2. Flow cytometric analysis of thymus cells isolated from wild type C57BL/6 mice, B6-*Ahr<sup>fl/fl</sup>* mice and B6-*Ahr<sup>fl/fl</sup>;Foxn1-cre* mice as described in Fig. 1. CD4 and CD8 subpopulations were gated on CD45<sup>+</sup> cells. Epcam and CD45 subpopulations were total thymus cells.



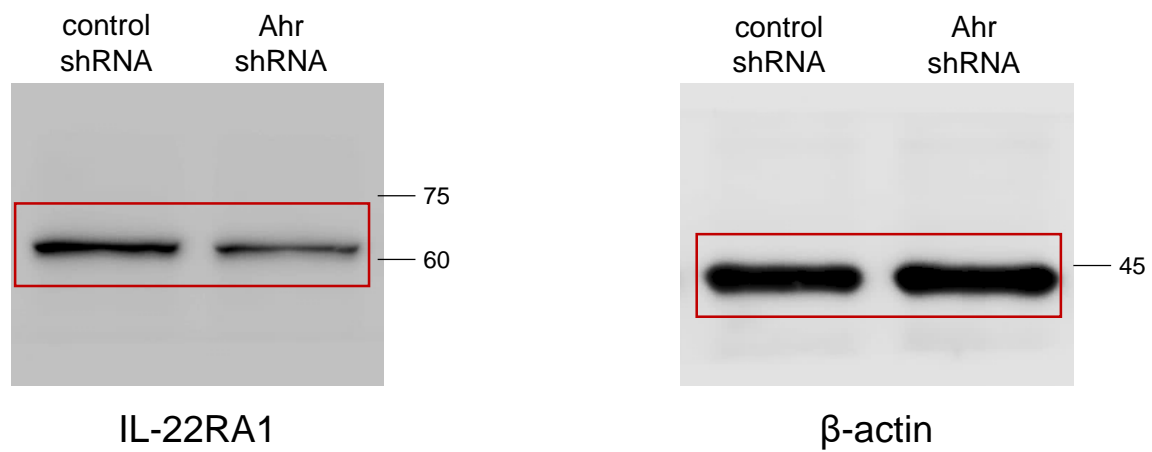
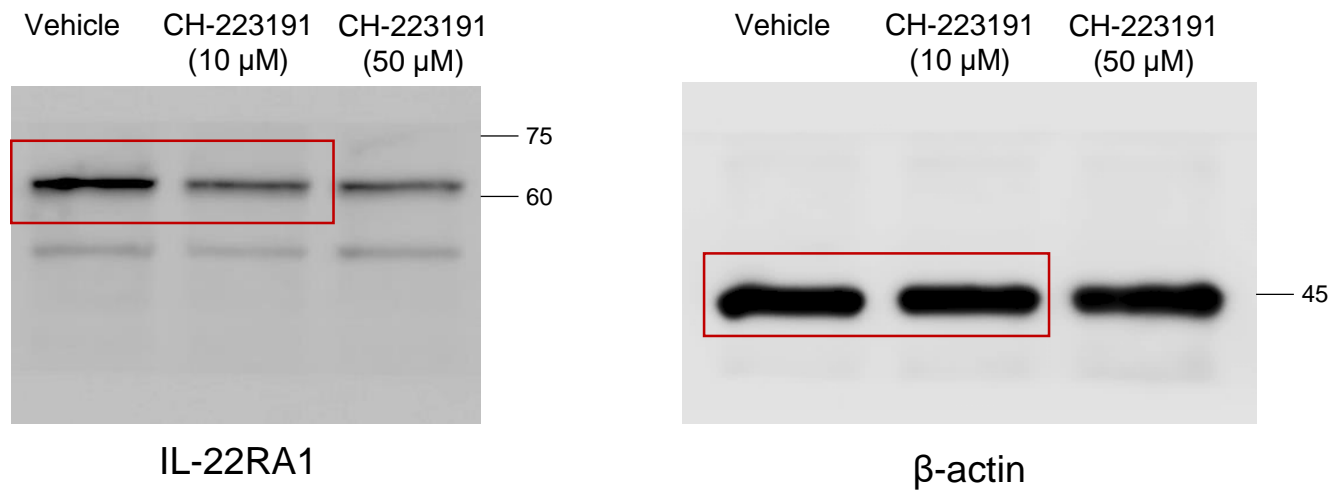
Supplementary Figure 3. Flow cytometric analysis of thymus cells isolated from B6-*I22ra1<sup>fl/fl</sup>* mice and B6-*I22ra1<sup>fl/fl</sup>;Foxn1-cre* mice as described in Fig. 5c.



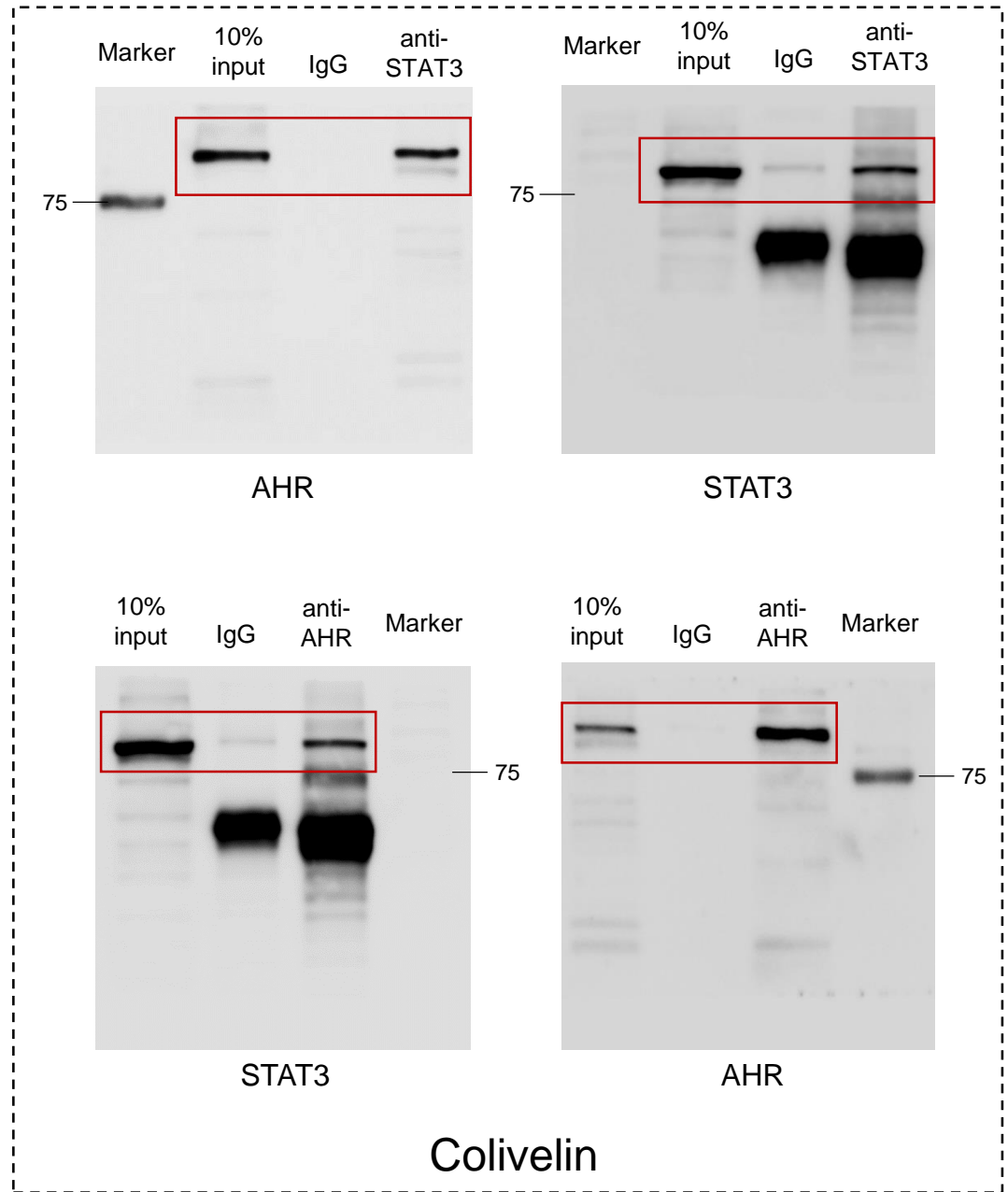
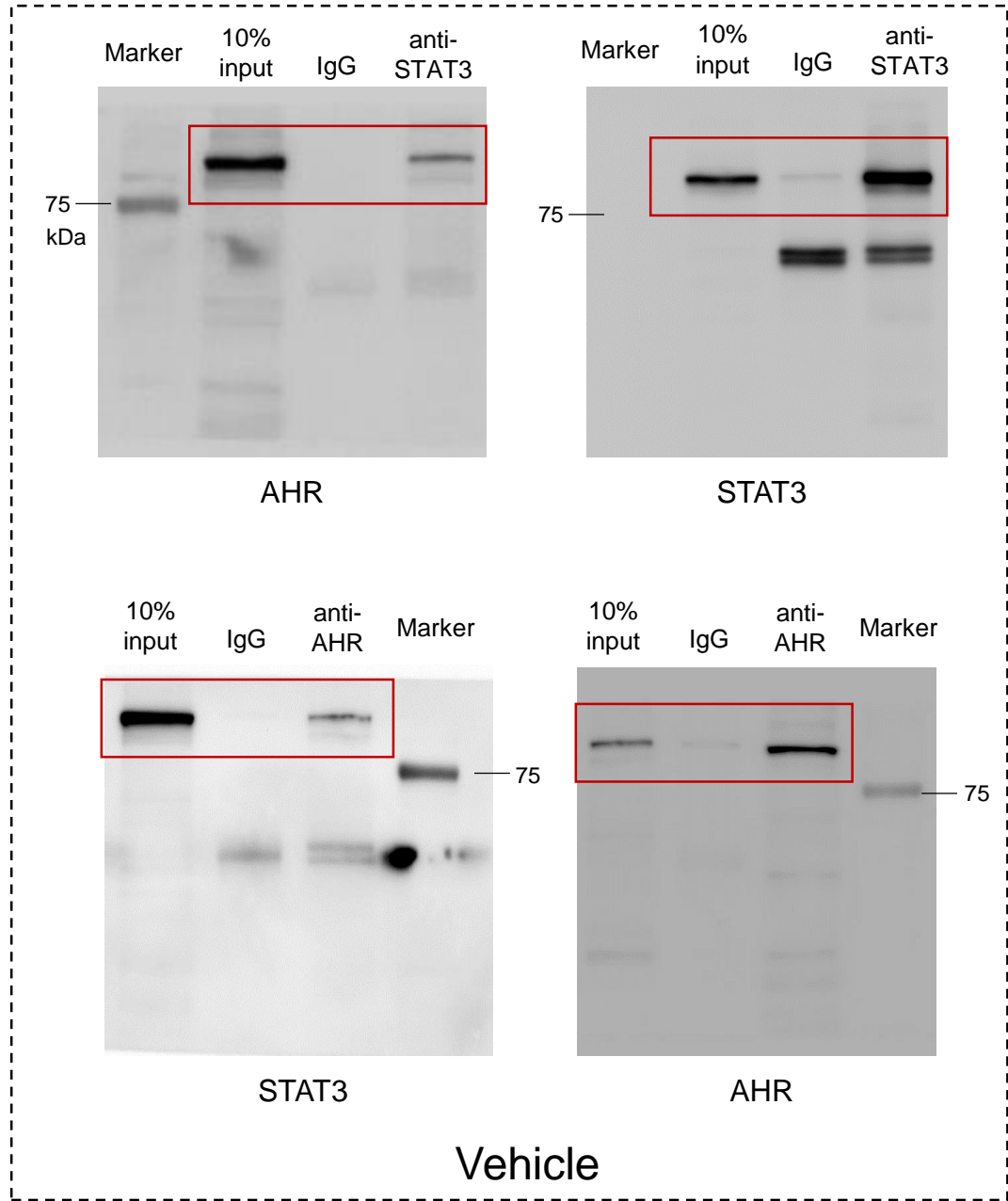
Supplementary Figure 4. Flow cytometric analysis of thymus cells isolated from recipient mice as described in Fig. 6d and 6e.



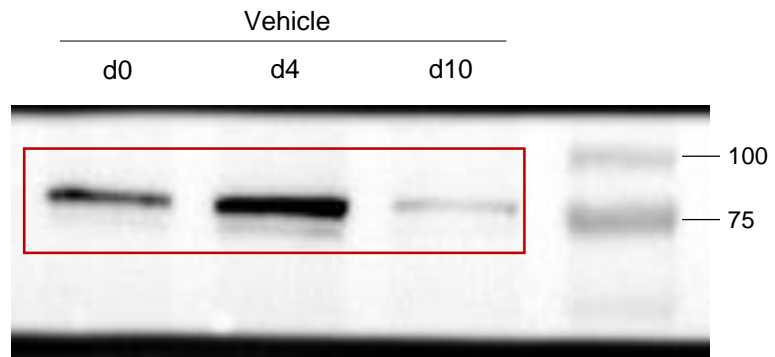
Supplementary Figure 5. Uncropped scans of Fig. 2d.



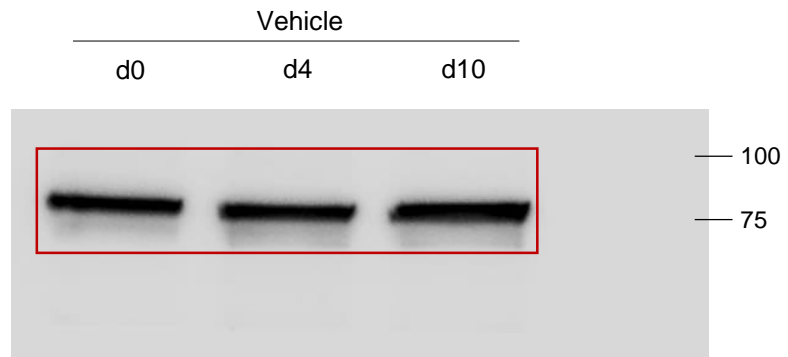
Supplementary Figure 6. Uncropped scans of Fig. 3d.



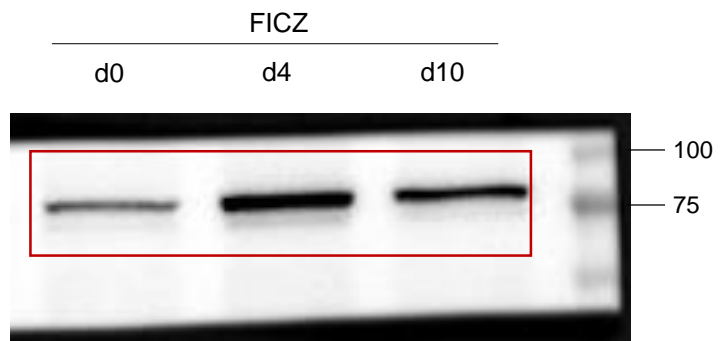
Supplementary Figure 7. Uncropped scans of Fig. 4a.



p-STAT3



STAT3



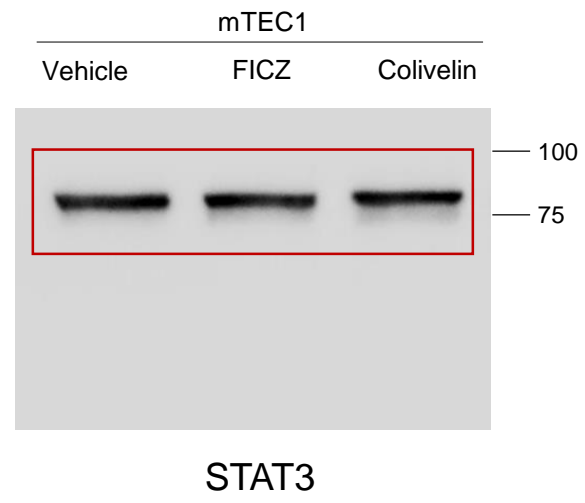
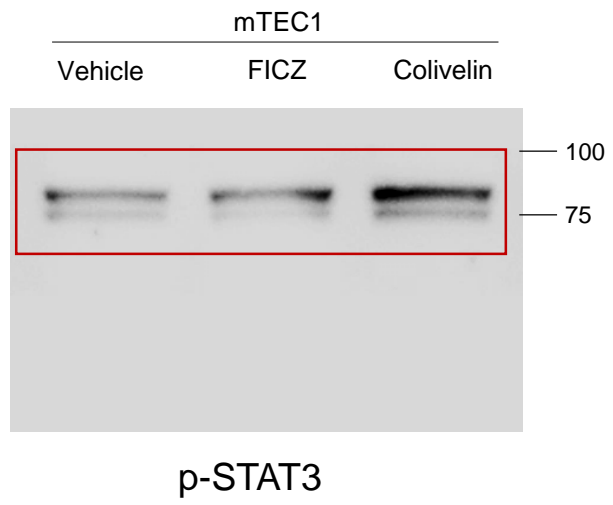
p-STAT3



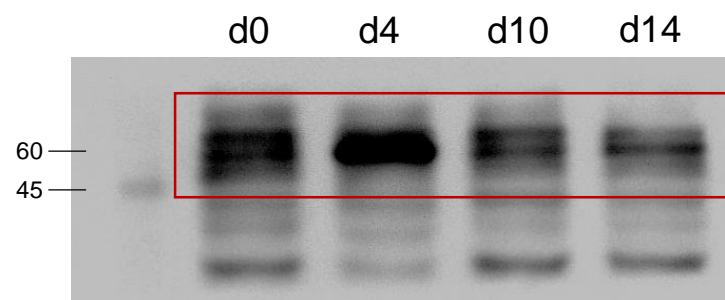
STAT3

Supplementary Figure 8. Uncropped scans of Fig. 4f.

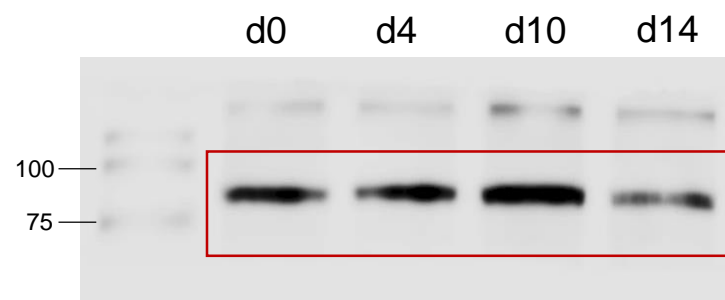




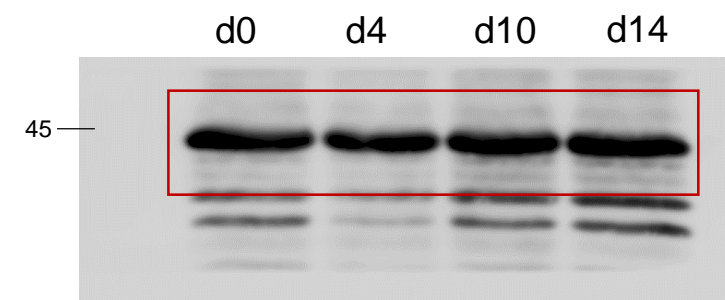
Supplementary Figure 9. Uncropped scans of Fig. 4g.



IL-22RA1



AHR



$\beta$ -actin