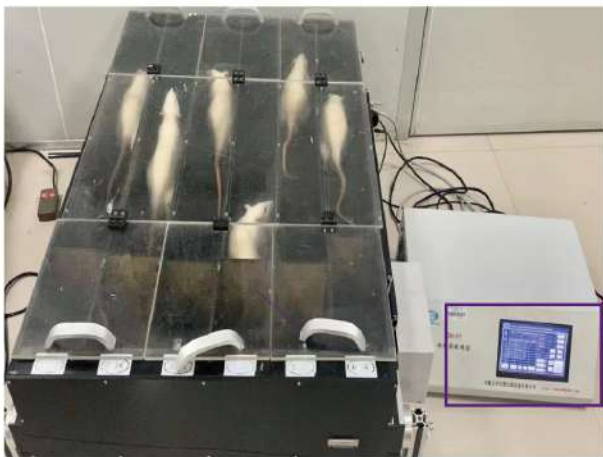


Supplementary material 3: The diagram of rats running on the experimental treadmill.



Supplementary material 1. Determine the speed of exercise

Speed	Status of rats	Evaluation
6m/min	Stuck at the end of the conveyor belt	infeasible
8m/min	Go at a canter	feasible
10m/min	Moving too fast and will causing injury in rats	infeasible

Supplementary material 2. Determine the time of exercise

Time	Group A	Group B	Group C	Evaluation
10min	The rats were in good condition	-	-	feasible
20min	-	The rats were in good condition	-	feasible
30min	-	-	The rats had poor spirit and little activity	infeasible
