

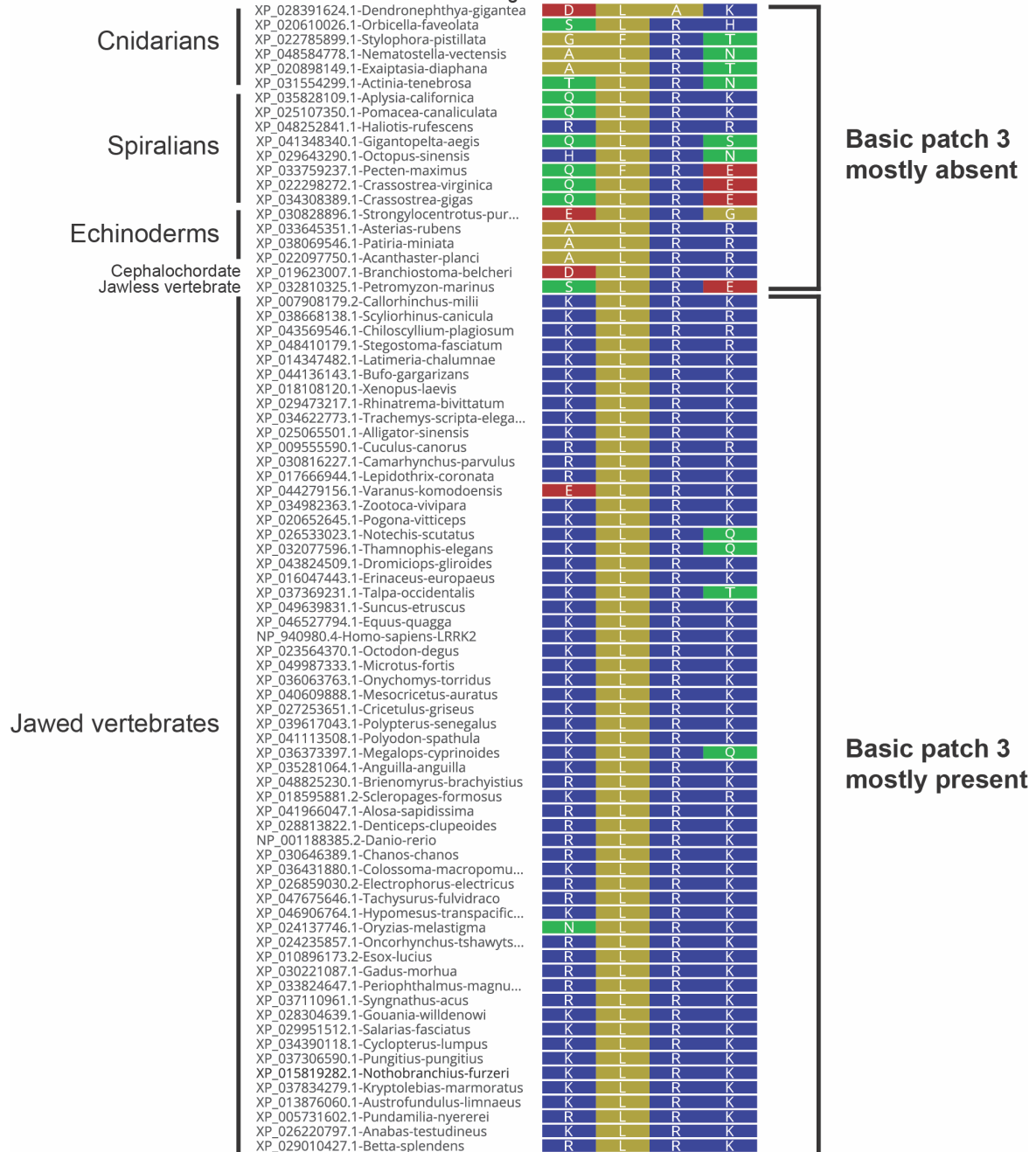
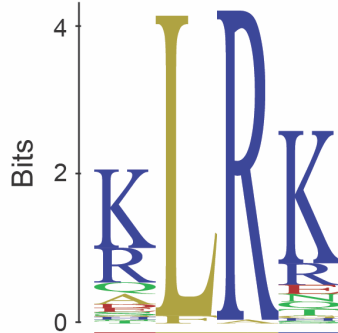


Structure of LRRK1 and mechanisms of autoinhibition and activation

In the format provided by the authors and unedited

Basic patch 3
(Human LRRK2 residues 1499-1502)

LRRK2
Sequence Logo



Basic patch 3
mostly absent

Basic patch 3
mostly present

Supplementary Figure 1 | Presence of basic patch 3 in metazoan LRRK2s

Sequence alignment of the region of metazoan LRRK2 that corresponds to basic patch 3 (residues 1499-1502 in human LRRK2). The consensus sequence logo is shown at the top. Major species clades are shown at the left next to individual sequence accession numbers and species names. Amino acids are colored according to polarity, with basic residues shown in blue. Most jawed vertebrates have a basic-L-R-basic motif. Non-jawed vertebrate metazoans have a conserved central L-R motif, but the first and/or fourth residues tend to not be basic.