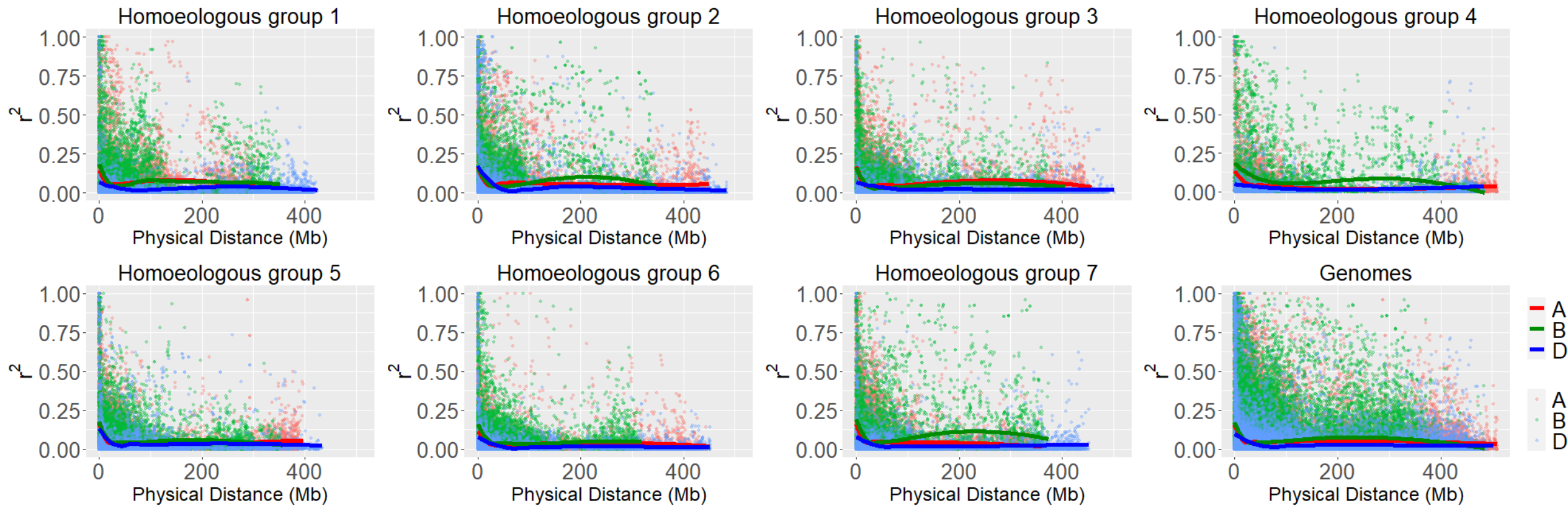
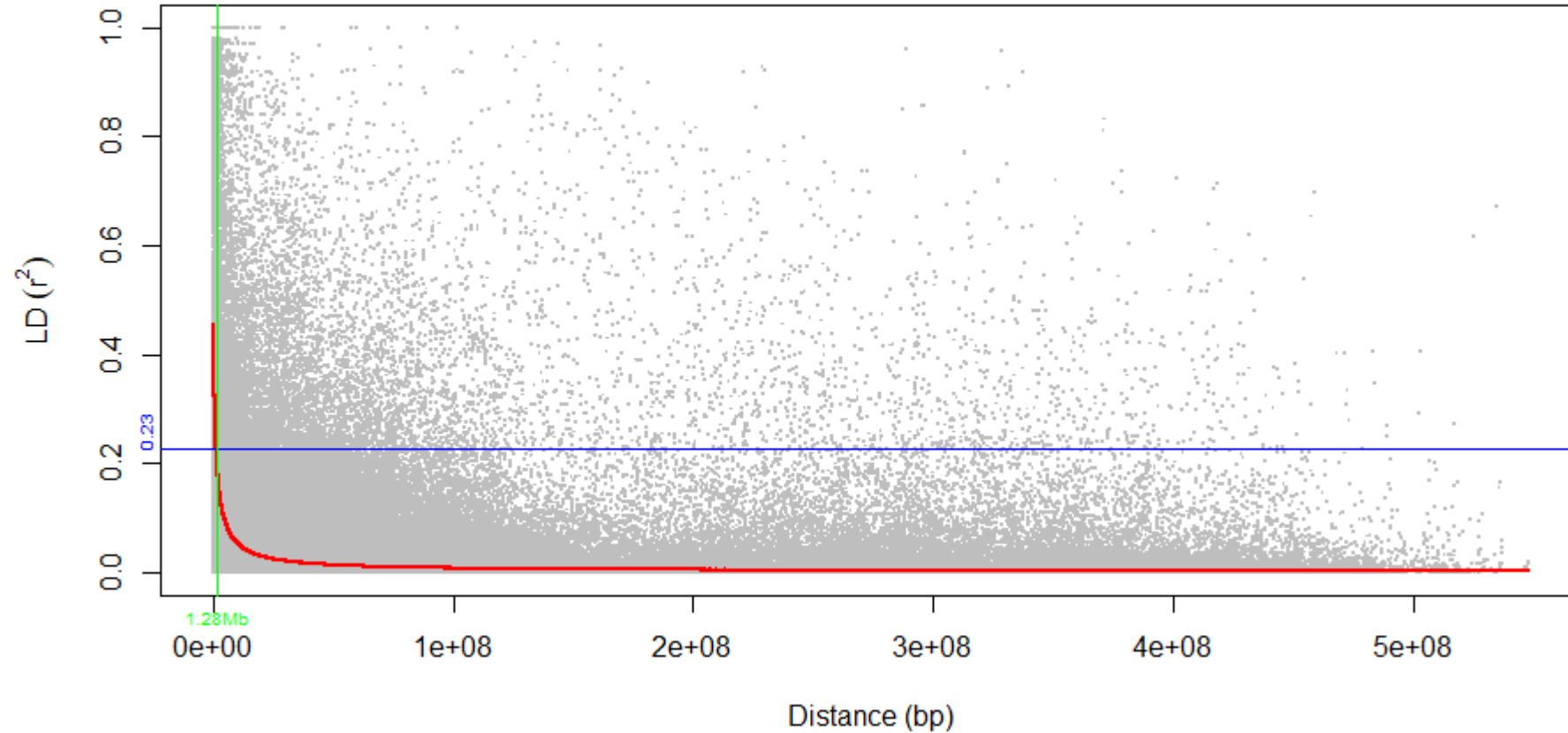


A



**Fig. S2. LD ( $r^2$ ) decay.** (A) along the chromosomes and full genome. Genome A in red, B in green and D in blue. (B) LD ( $r^2$ ) decay indicating half LD decay and half LD decay distance in the full genome.

B



**Fig. S2. LD (r<sup>2</sup>) decay.** (A) along the chromosomes and full genome. Genome A in red, B in green and D in blue. (B) LD (r<sup>2</sup>) decay indicating half LD decay (blue) and half LD decay distance (green) in the full genome.