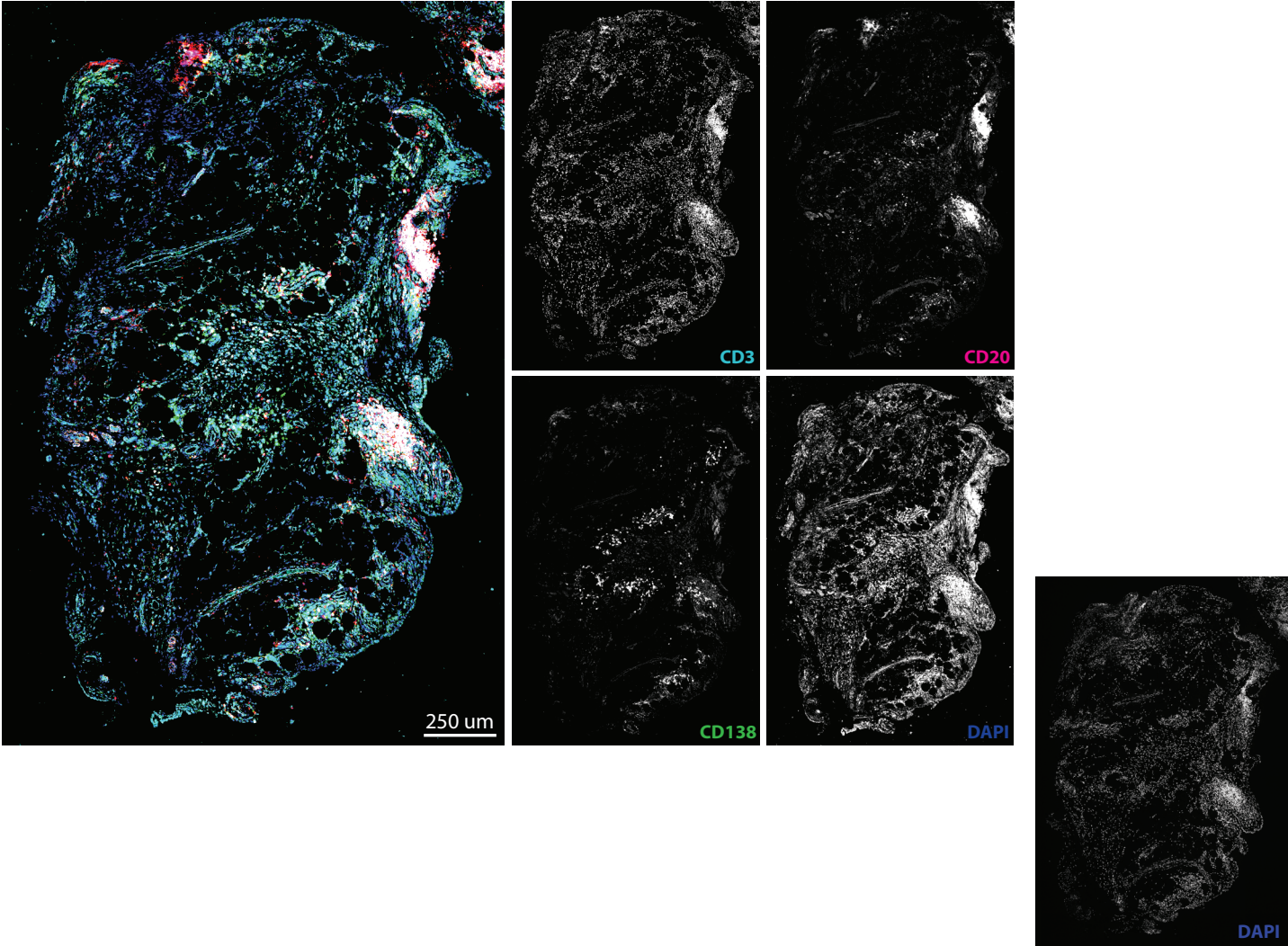
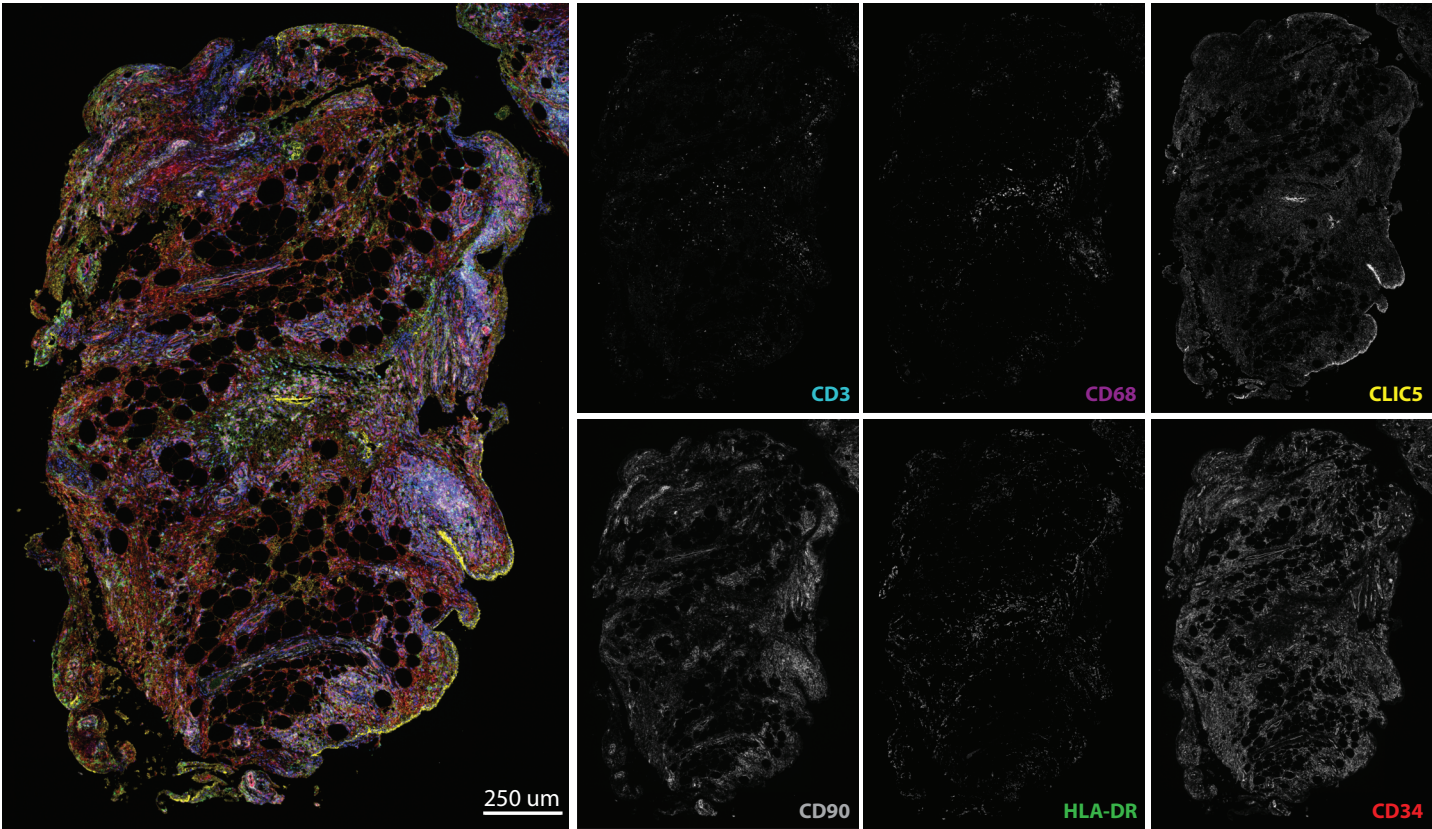


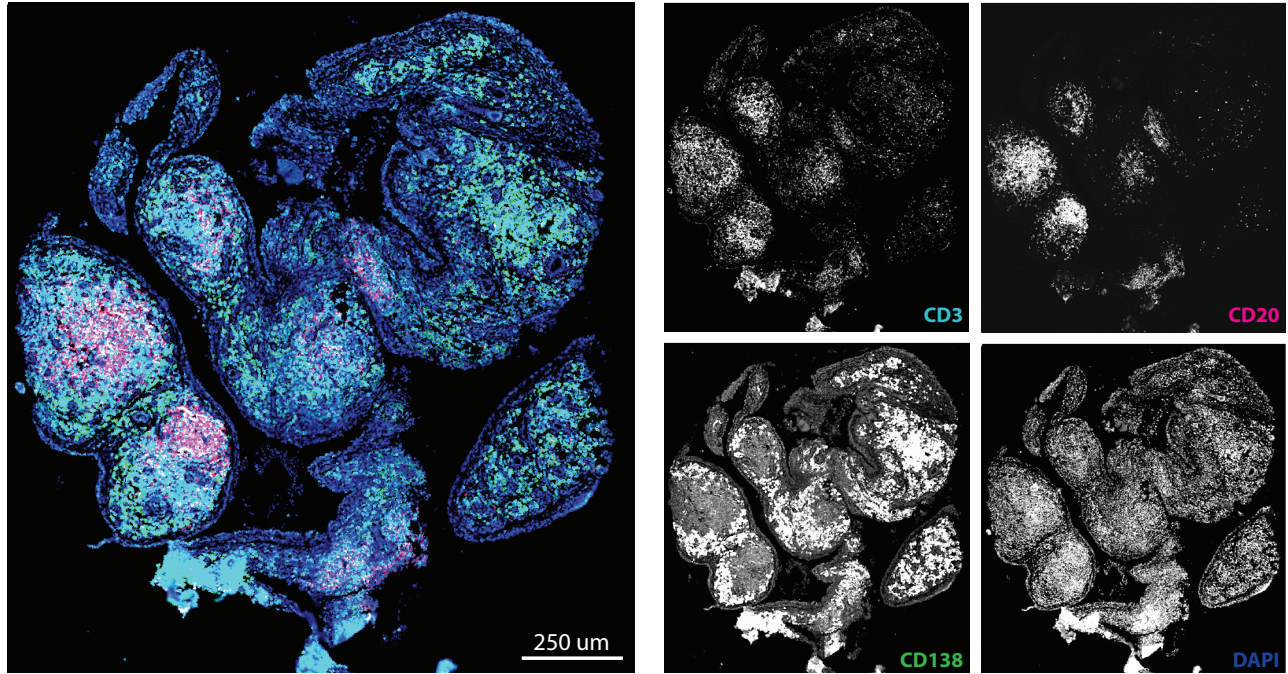
e



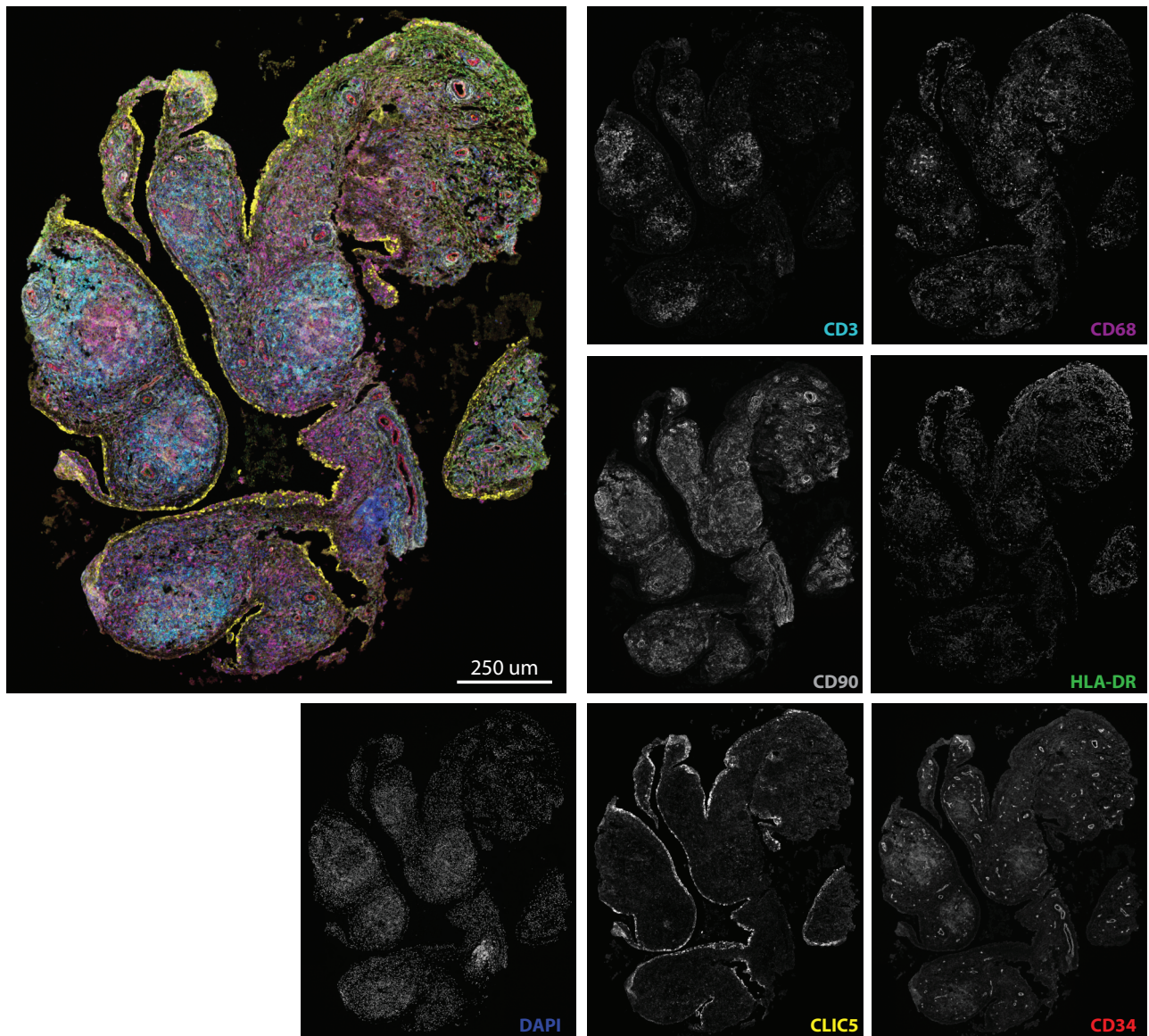
f



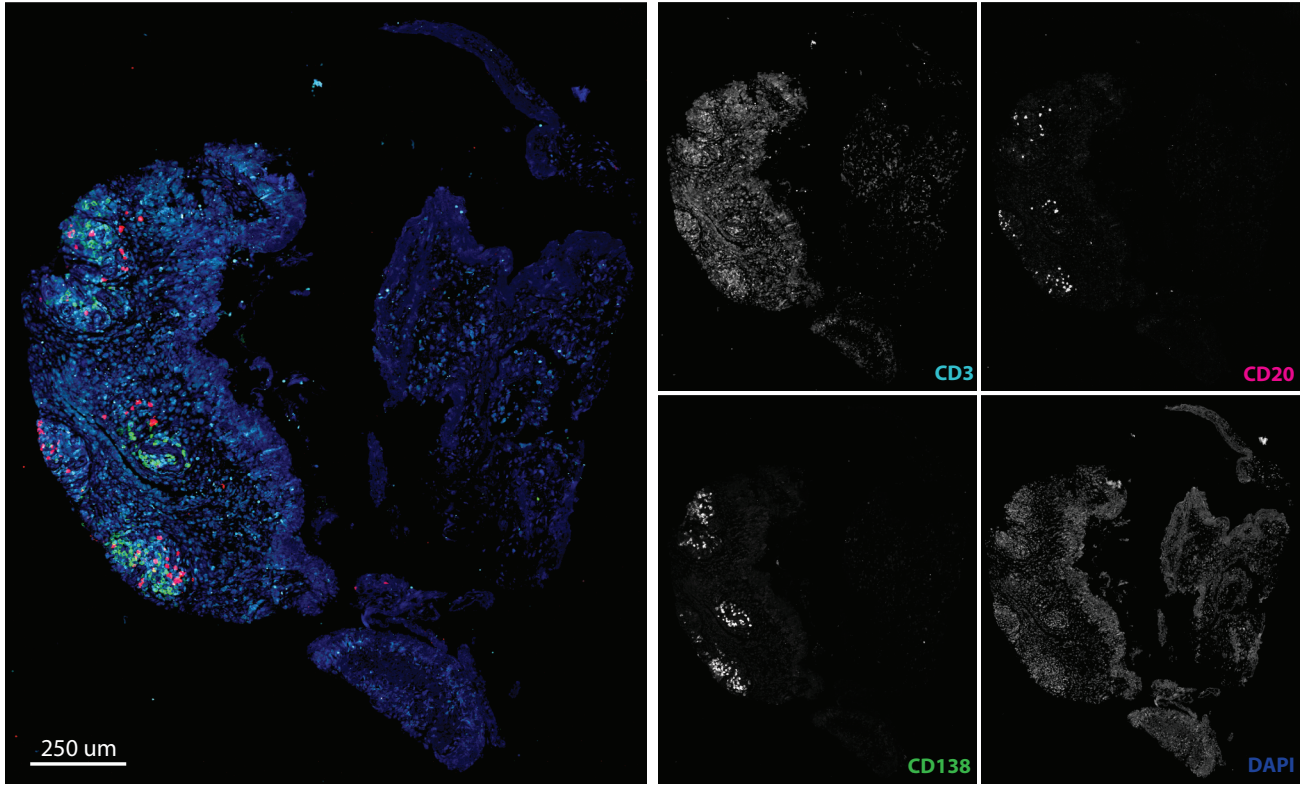
g



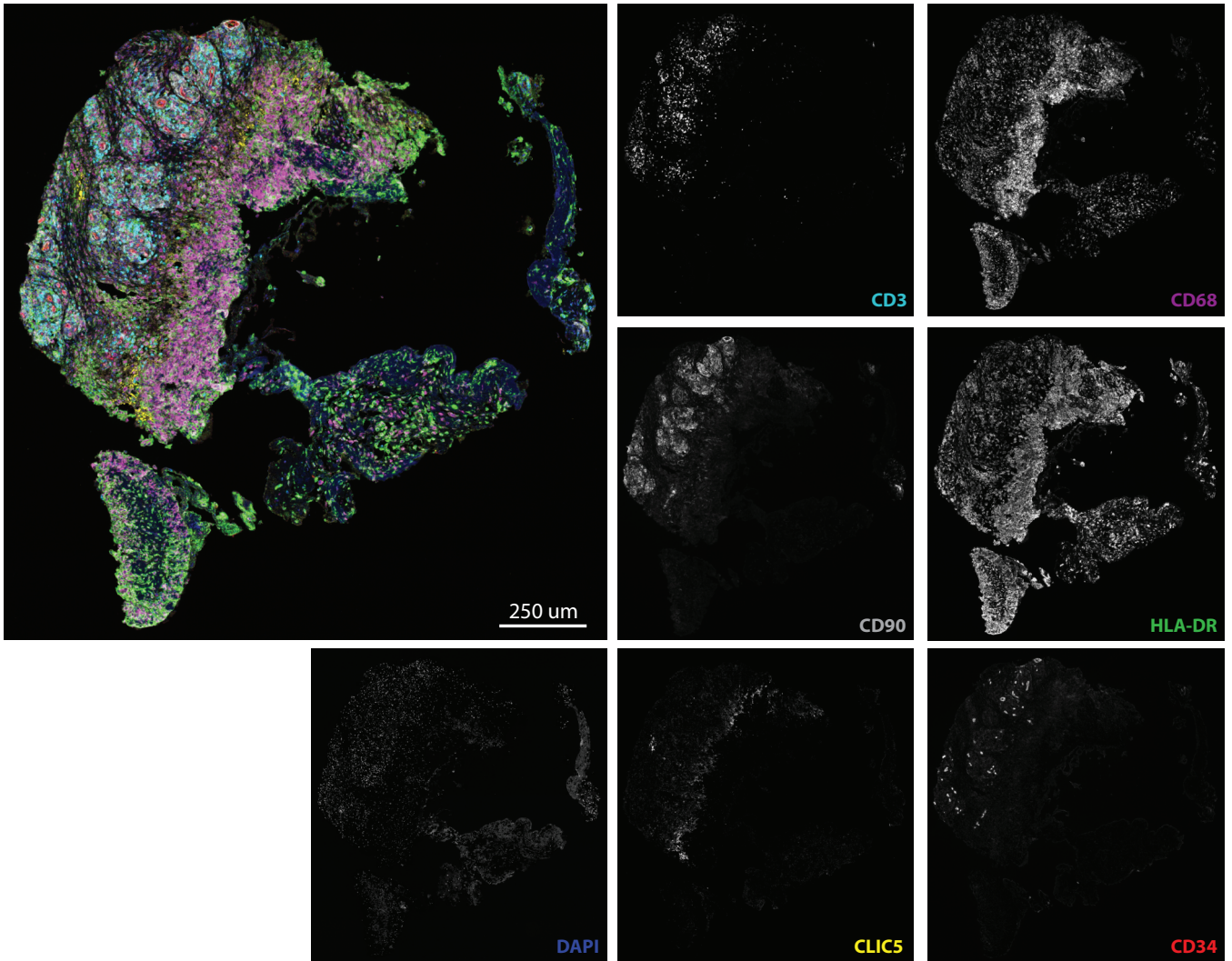
h



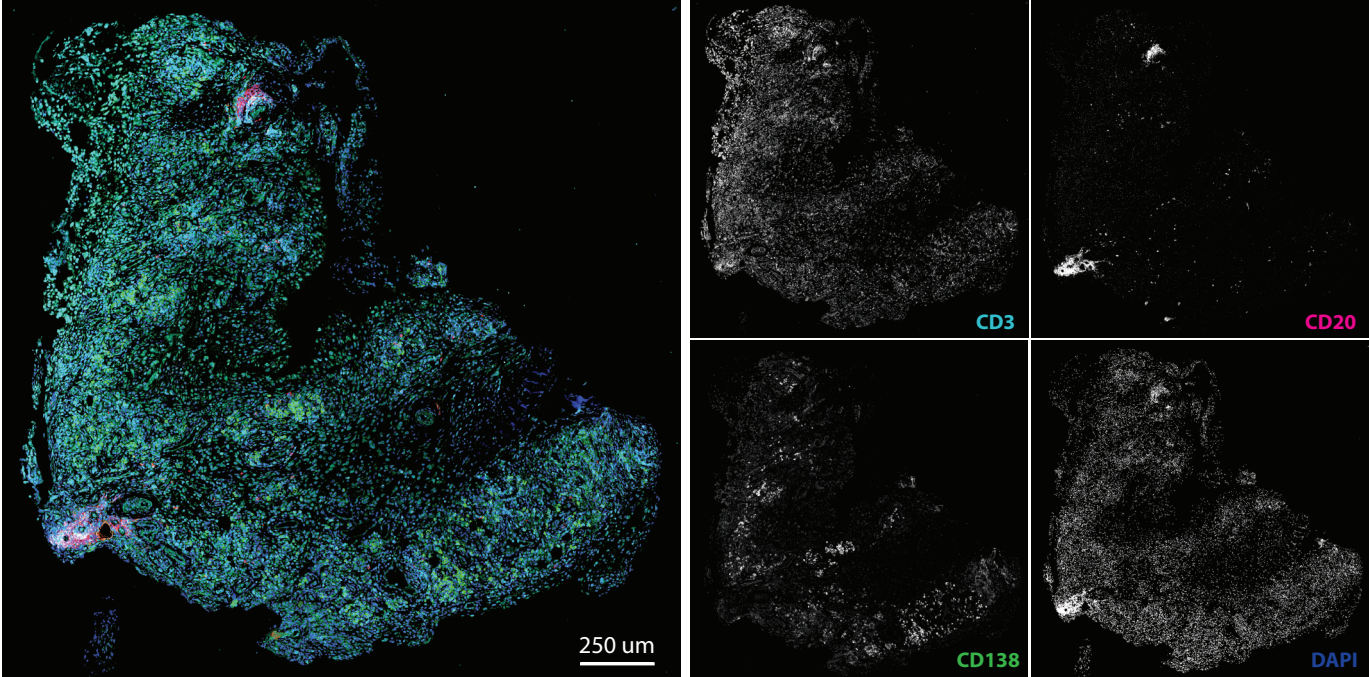
i



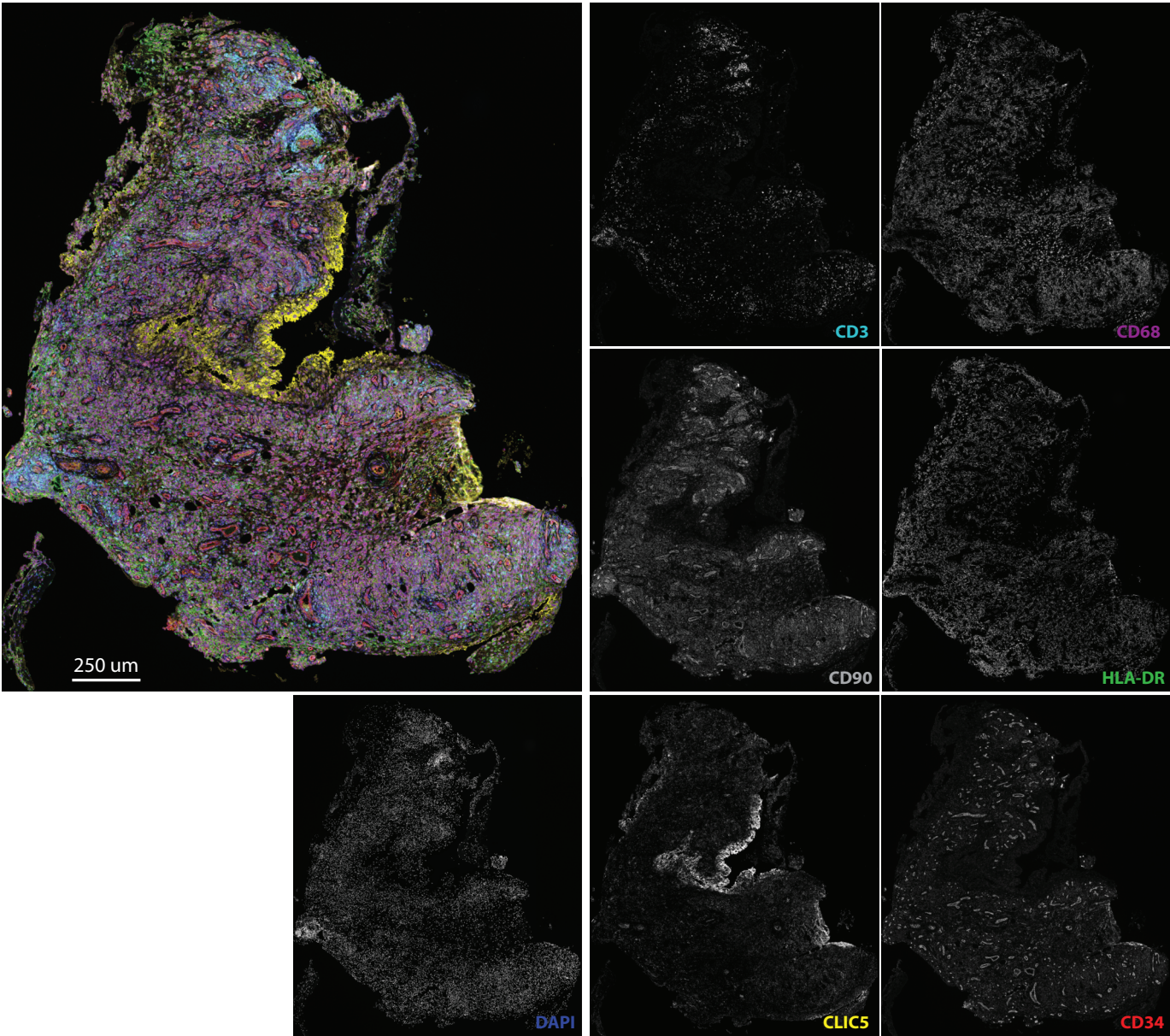
j



k



l



Supplementary Fig. 4. Representative histology images for each CTAP. Representative fragments from patients in each CTAP, showing composite and individual staining of each marker in the lymphocyte panel (**a, c, e, g, i, k**) or stromal cell panel (**b, d, f, h, j, l**). A total of 150 fragments from 36 individuals (mean 4.2 fragments per individual, range 2-9 fragments per individual) were stained in batches and analyzed as a single cohort. A high-resolution version of this figure is available at <https://doi.org/10.5281/zenodo.8364277>.