

Supplemental Figures

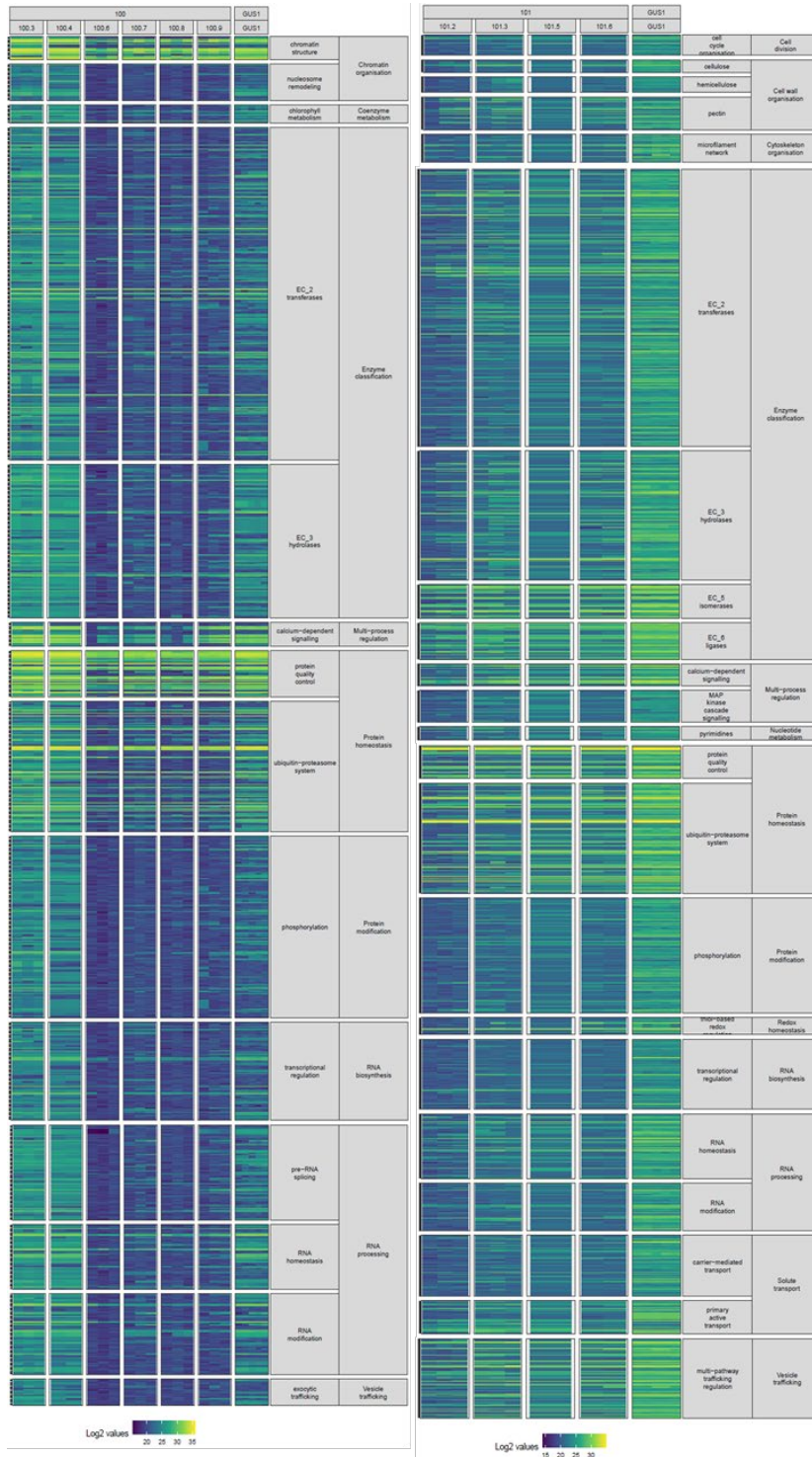


Figure S1. Heatmap displaying the total expression of significantly differentially abundant proteins in the MapMan enriched functional categories for the *ARR17* (100) and *GATA15* (101) expression lines, compared to the pGFPGUSPlus empty vector control (GUS1). Each column represents data from a unique transgene event.

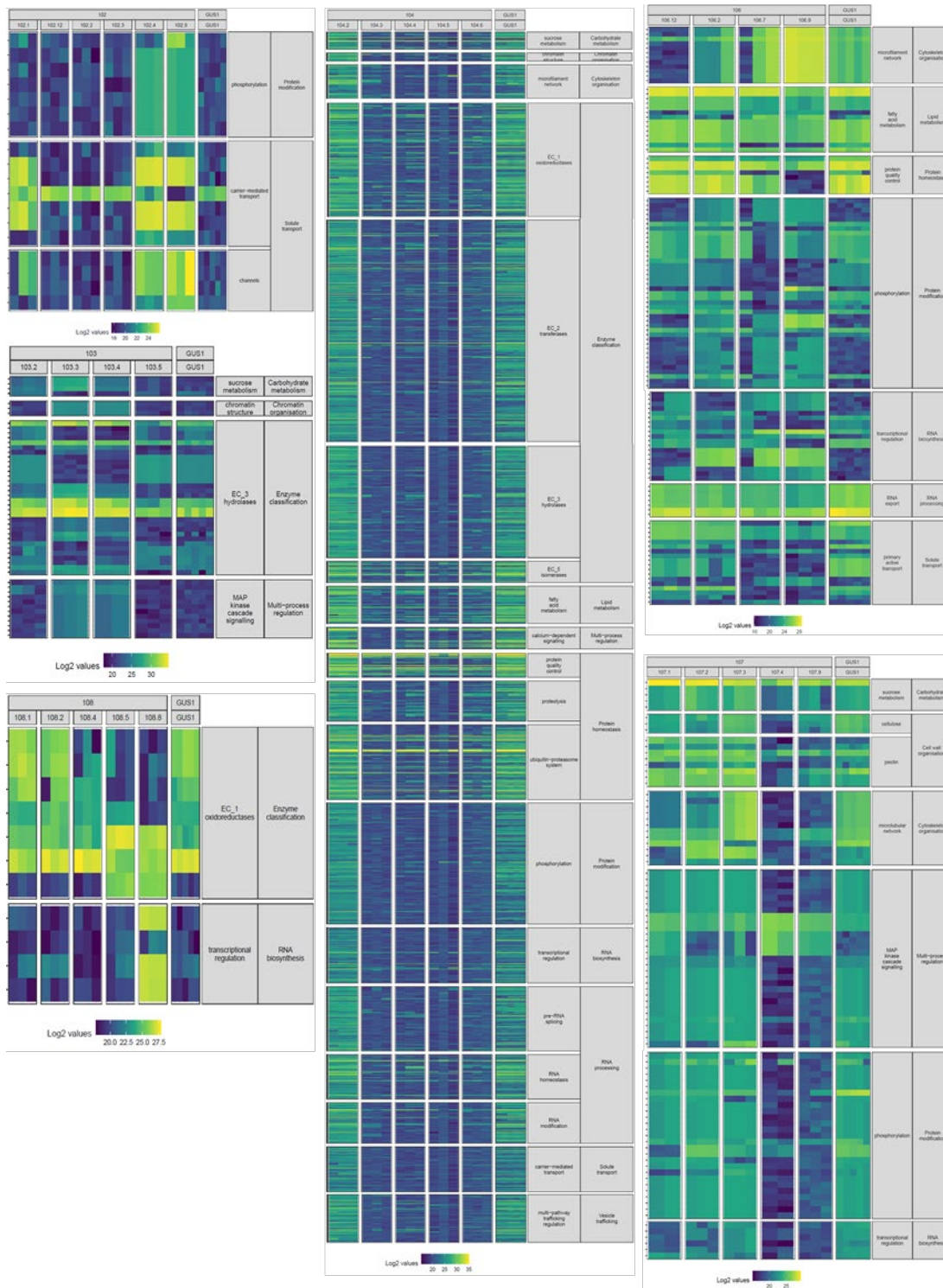


Figure S2. Heatmap displaying the total expression of each gene in the MapMan enriched functional categories for the CCHC Zinc Finger (102) *DRB1* (103) Sapur.15WG074900 hypothetical protein (104), Sapur.15WG075700 hypothetical protein (106), *LEAFY* (107), and *FT* (108) expression lines, compared to the pGFPGUSPlus empty vector control (GUS1). Each column represents data from a unique transgene event.

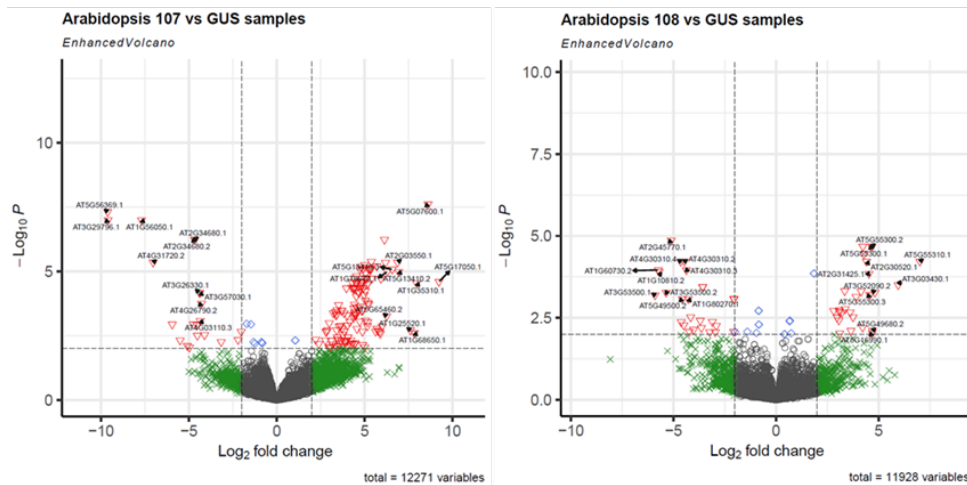
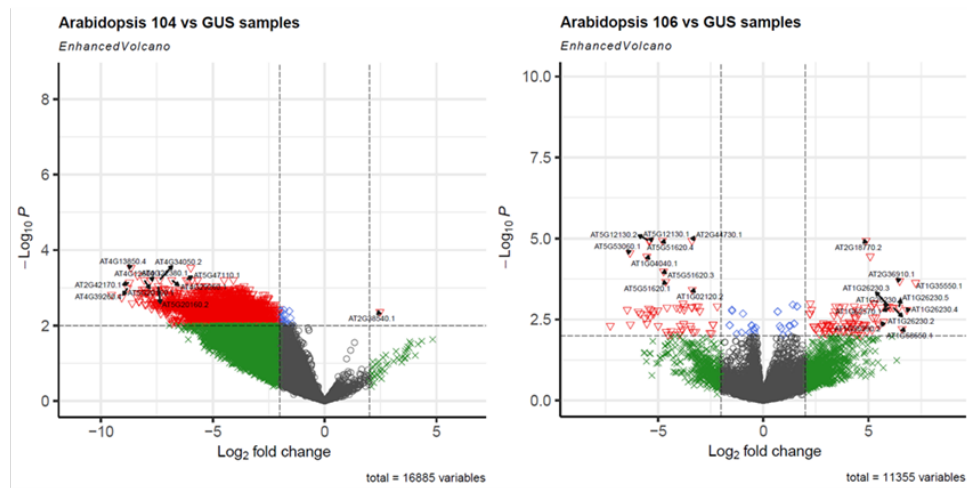
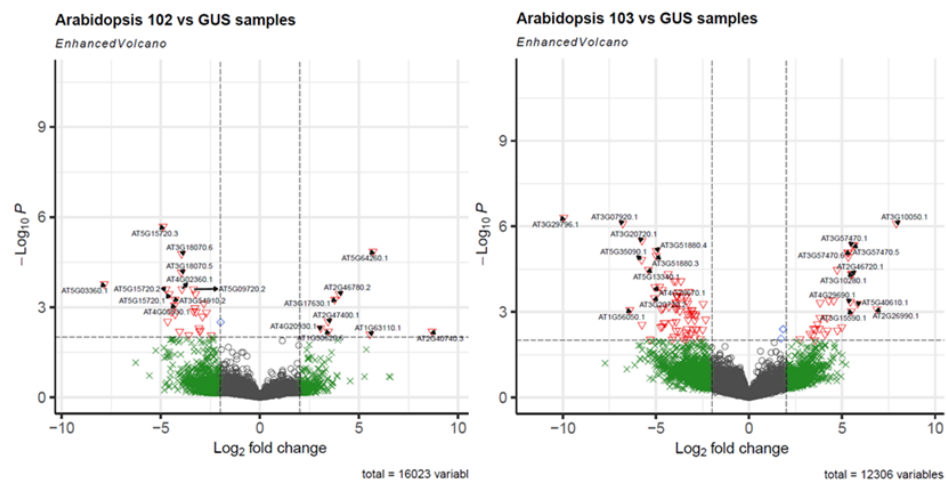


Figure S3. Volcano plots displaying the total differential abundant protein results and top ten significant up and down regulated proteins for the Sapur.15WG068800 CCHC Zinc Finger nuclease (102), Sapur.15WG074300 *DRB1* (103), Sapur.15WG074900 hypothetical protein (104), Sapur.15WG075700 hypothetical protein (106), *LEAFY* (107), and *FT* (108) expression lines, relative to the empty vector control.

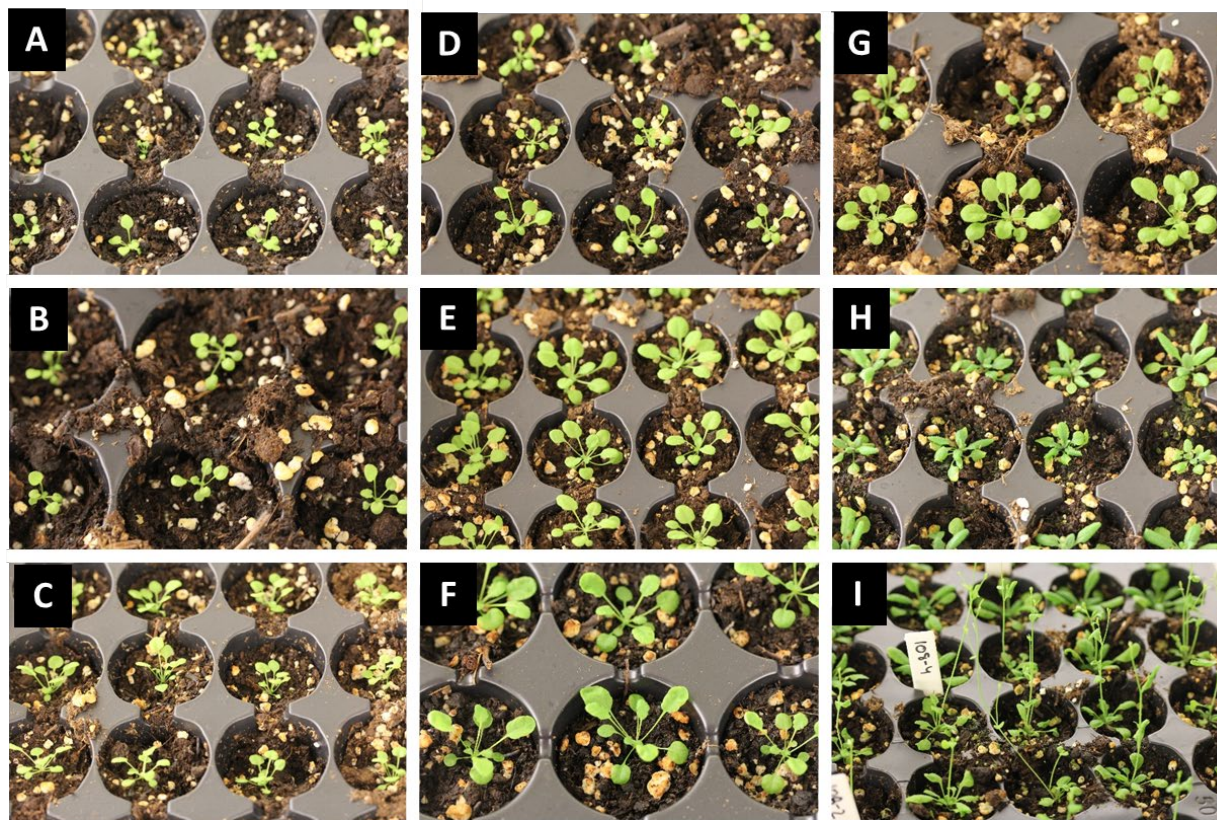
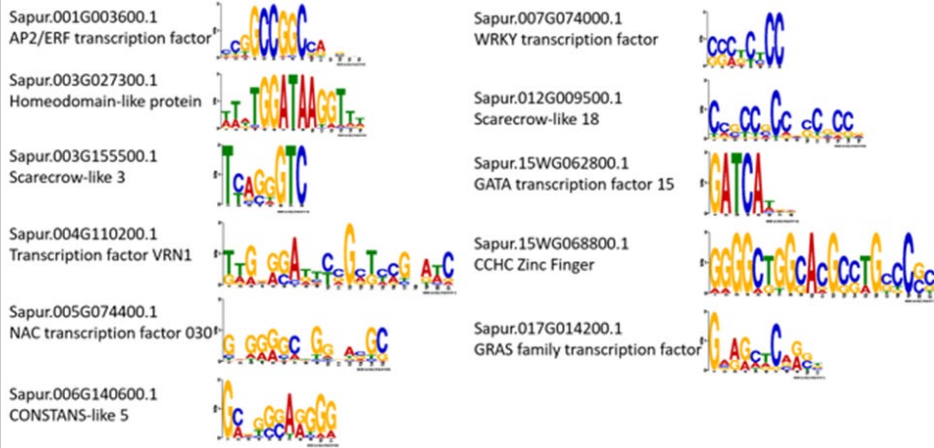


Figure S4. Comparison of transgenic *Arabidopsis* seedlings 23 days after germination. (A) empty vector control; (B) overexpression of *ARR17*, Sapur.15WG073500; (C) overexpression of *GATA15*, Sapur.15WG062800; (D) overexpression of CCHC zinc finger, Sapur.15WG068800; (E) overexpression of *DRB1*, Sapur.15WG074300; (F) overexpression of hypothetical protein, Sapur.15WG074900; (G) overexpression of hypothetical protein, Sapur.015WG075700; (H) overexpression of *LEAFY*, Sapur.15WG122200; (I) overexpression of *FT*, Sapur.008G061900.

A 94006 Female library



B 'Fish Creek' Male library

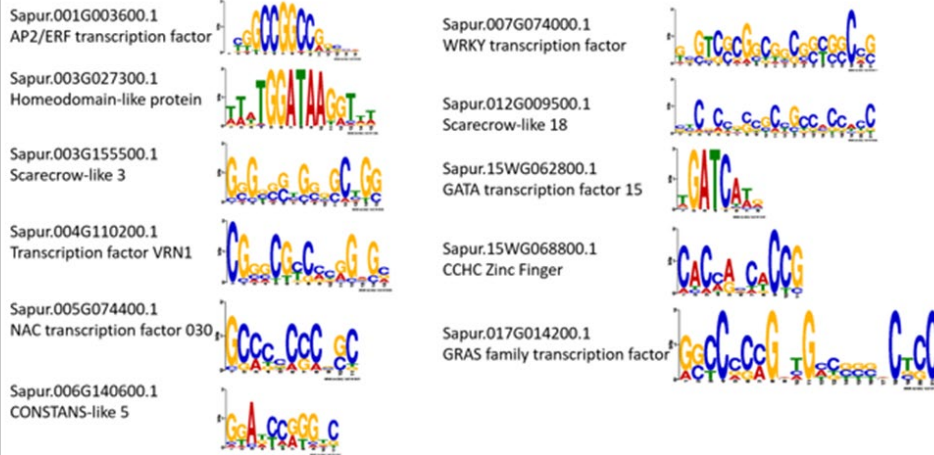


Figure S5. Predicted binding motifs for each transcription factor tested in DAP-Seq. A. Predictions from the 94006 library (female); B. Predictions from the 'Fish Creek' library (male).

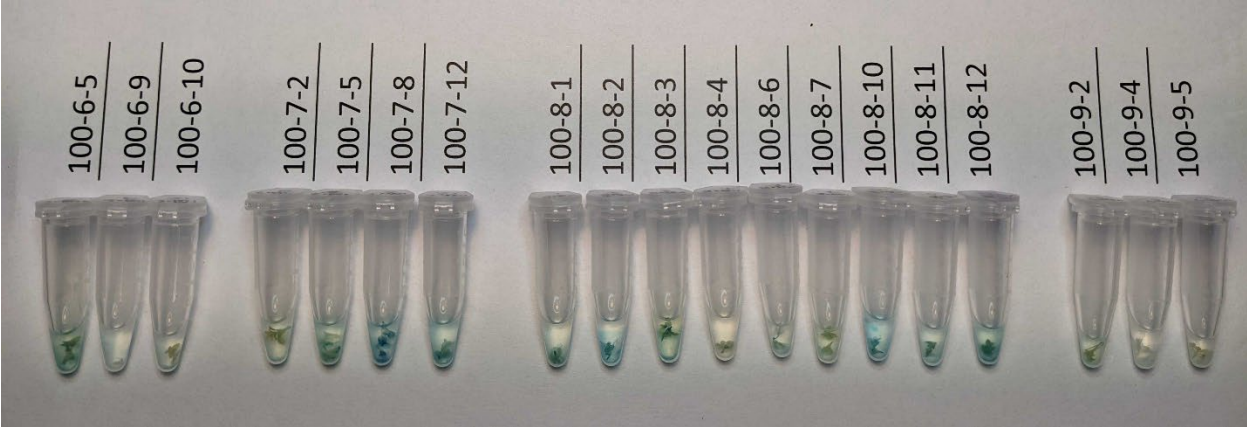


Figure S6. GUS staining assay results for representative samples of T₂ flowers after ethanol staining