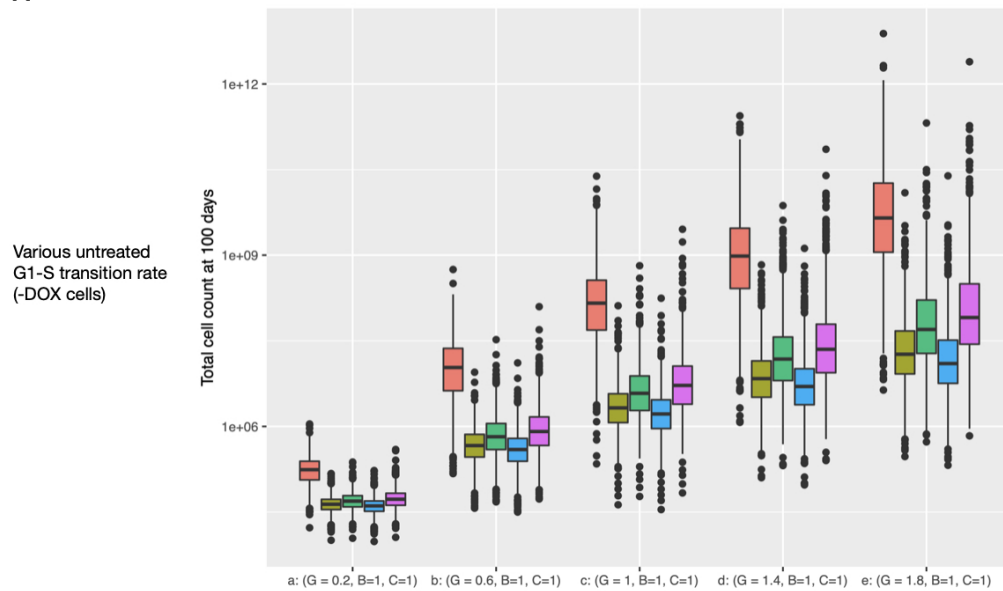


Fig. S13 *In silico* simulation of new cell lines - 1 (A) for -DOX cells and (B) for +DOX cells are the standard box plots for the number of cells at day 100. From left to right, we varied the untreated G1-S transition from the original cell line (MCF7) by giving different weights (0.2, 0.6, 1.0, 1.4, 2.0) of the original parameter λ_α . In x-axis, G denotes the weight of G1-S growth rate, B denotes the weight of the slope of palbociclib response curve, and C denotes the weight of the half maximal inhibitory concentration (G1/S-TR50) of palbociclib response curve.

Schedule  3 weeks on, 1 week off, 125mg  BID, 50mg  BID, 50mg in morning, 25mg at night  daily, 100mg  daily, 75mg

A



B

