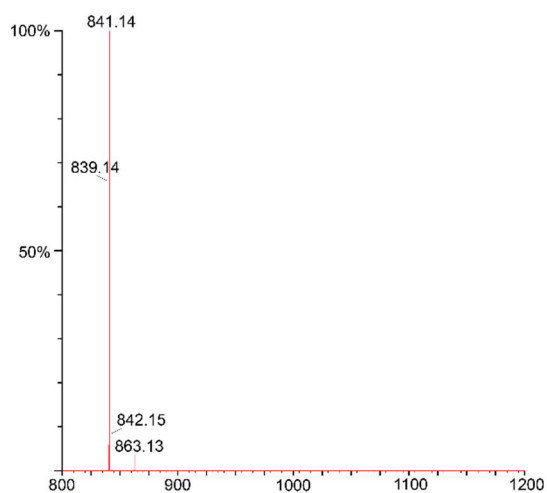


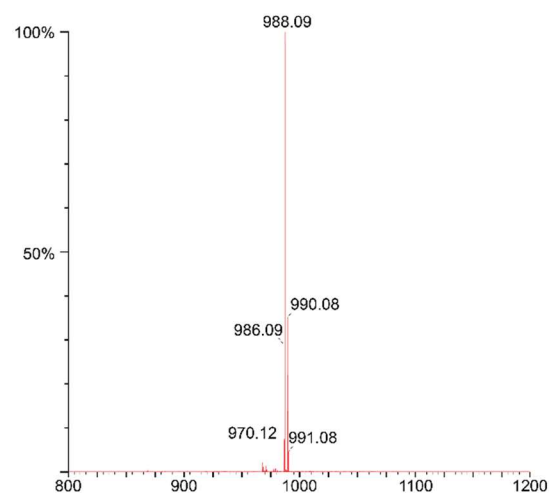
ATBTA-Eu

TOF MS ES+
1.78e6



DTBTA-Eu

TOF MS ES+
1.63e6



Supplementary Figure S3: Conversion of ATBTA-Eu³⁺ to DTBTA-Eu³⁺ was verified by ESI-MS. ATBTA-Eu³⁺ (left, 861.5 (M - H⁺), 839.5 (M - Na⁺)) was chemically converted to the activated DTBTA-Eu³⁺ (right, 1008.3 (M - H⁺), 986.3 (M - Na⁺), 968.3 (M - H₂O)), which was used to label LST and LST_CPHPs for biodistribution experiments. The mass spectrum on the right confirms complete conversion of the label and was chosen as a representative sample for each batch of activated DTBTA-Eu³⁺ produced for this study.