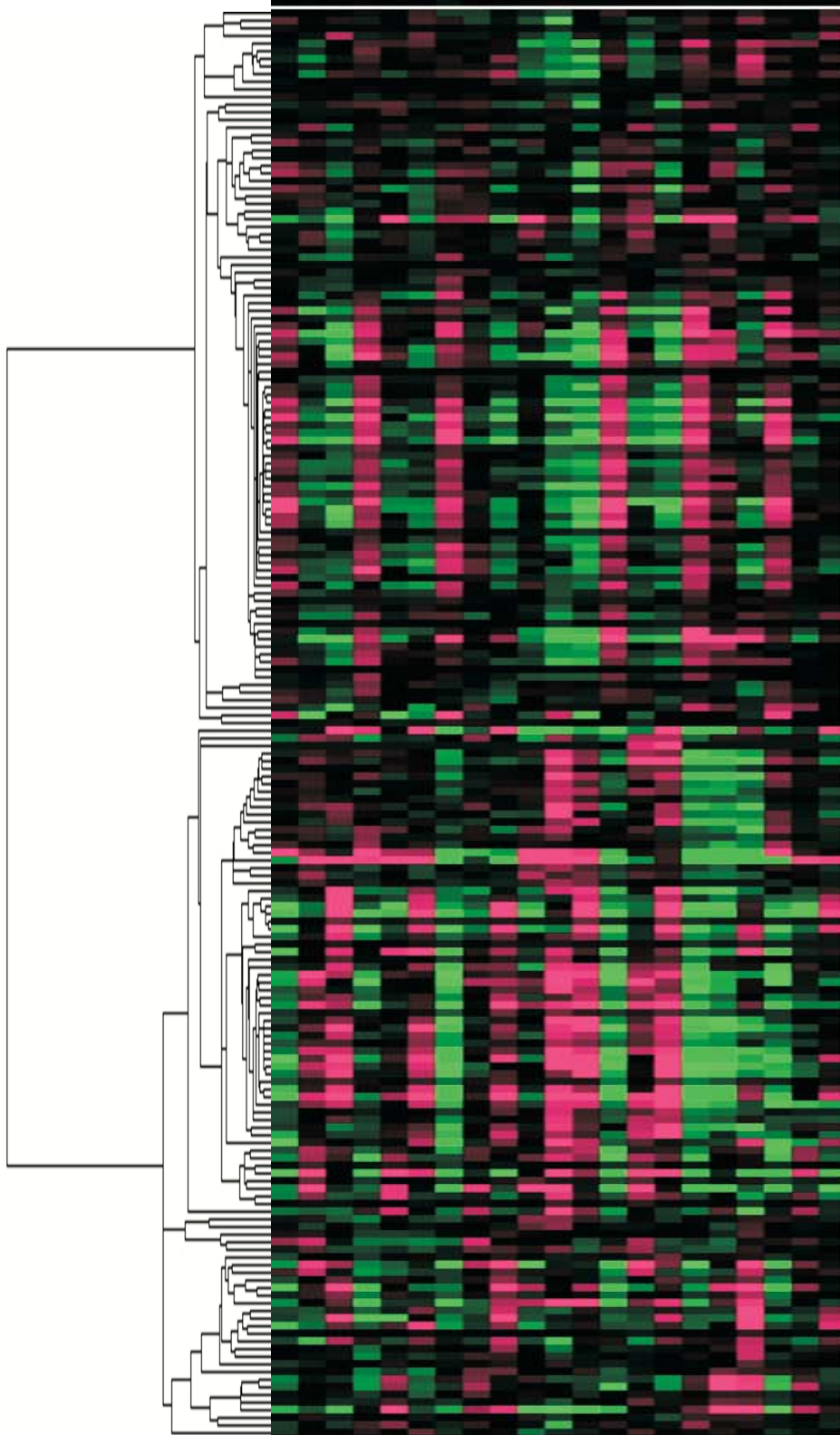


Ⓐ 2 DAI

Col-0 *ein2* *jar1* *eds5* *npr1* *pad4* *NahG*
M C O M C O M C O M C O M C O M C O



Genes that were repressed by viruses and affected by one or more genotypes.

Genes that were induced by viruses and affected by one or more genotypes. These are highlighted in Figure 2A.

Supplementary Figure 1A. Expression profiles of 187 genes that had expression profiles that were significantly affected by one or more *A. thaliana* genotypes at 2 DAI. The columns represent genotypes and treatments and the rows represent genes. Each colored box represents the average signal of a gene for 3 replicates in the indicated sample. The expression data for each gene were mean centered prior to average linkage hierarchical clustering and the results were displayed using the TREEVIEW program. Magenta indicates samples in which the gene was expressed above the mean for the 21 treatments, black represents samples in which expression was at or near the mean, and green represents expression below the mean. The intensity of color corresponds to the degree to which expression was above or below the mean. M, mock inoculated; C, CMV-Y infected; O, ORMV infected; DAI, days after inoculation.