

Supplementary Information

Overview of Genome-Wide Significant Loci

S. Goovaerts et al.

Contents

RS3936018	3
RS2009778	4
RS6739488	5
RS17479393	6
RS970797	7
RS7626244	8
RS35614773	9
RS1351637	10
RS3822730	11
RS4714260	12
RS3799970	13
RS9491697	14
RS296418	15
RS148673350	16
RS202055590	17
RS1581525	18
RS147676525	19
RS7813717	20
RS10120728	21
RS7920484	22
RS61920200	23
RS10843158	24
RS151174669	25
RS11609649	26
RS1034266	27
RS1380208	28
RS4842918	29
RS12940346	30
RS1321454	31
RS6054748	32

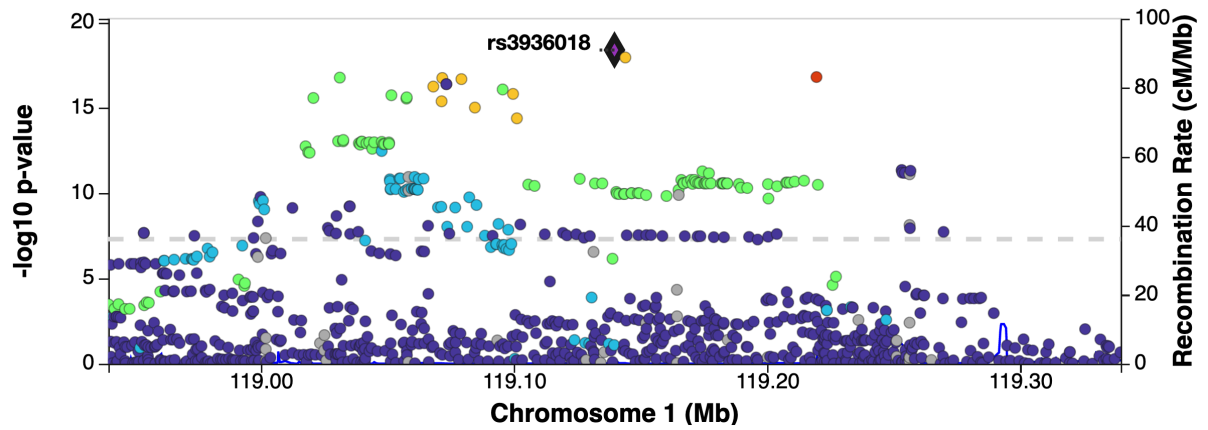
See page 2 for captions

Overview figures of 30 genome-wide significant loci. **A**, LocusZoom plots for the segment in which the SNP had its lowest P-value (one-sided chi-square). Points are colored based on linkage disequilibrium (r^2) in the 1000 Genomes Phase 3 EUR population. **B**, $-\log_{10}(P\text{-values})$ (one-sided chi-square) across hierarchical cranial vault segments. Genome-wide significant associations ($P < 5e-8$) are indicated with black circles on the polar dendrogram and segments that significantly replicated in the UK Biobank ($P < 0.0244$) are indicated with '*'. **C**, Latent shapes associated with the most significant segment (top row), and full cranial vault (bottom row). Red and blue represent an outwards and inwards deformation respectively relative to the overall average cranial vault shape.

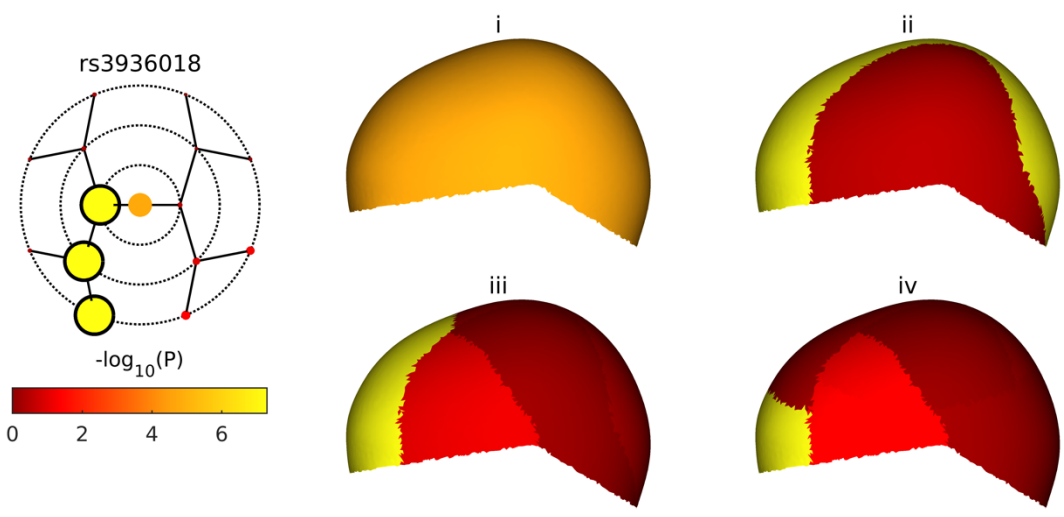
rs3936018

A

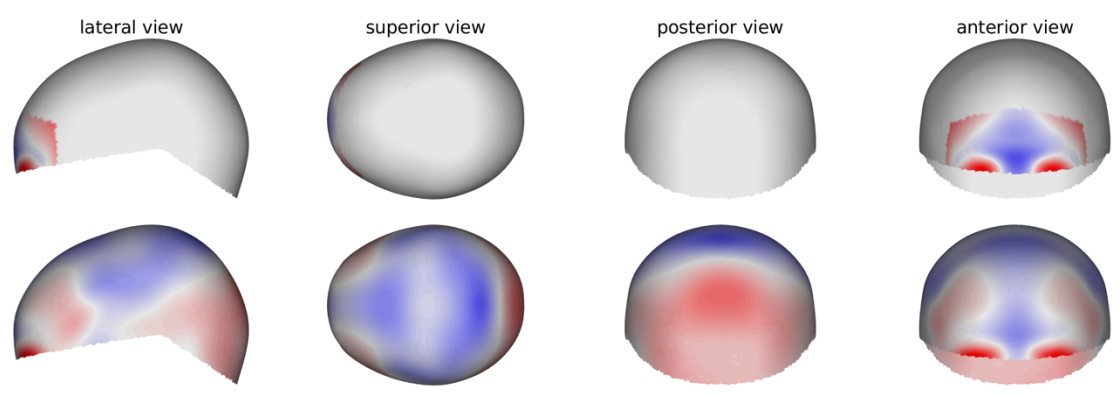
CV11



B



C

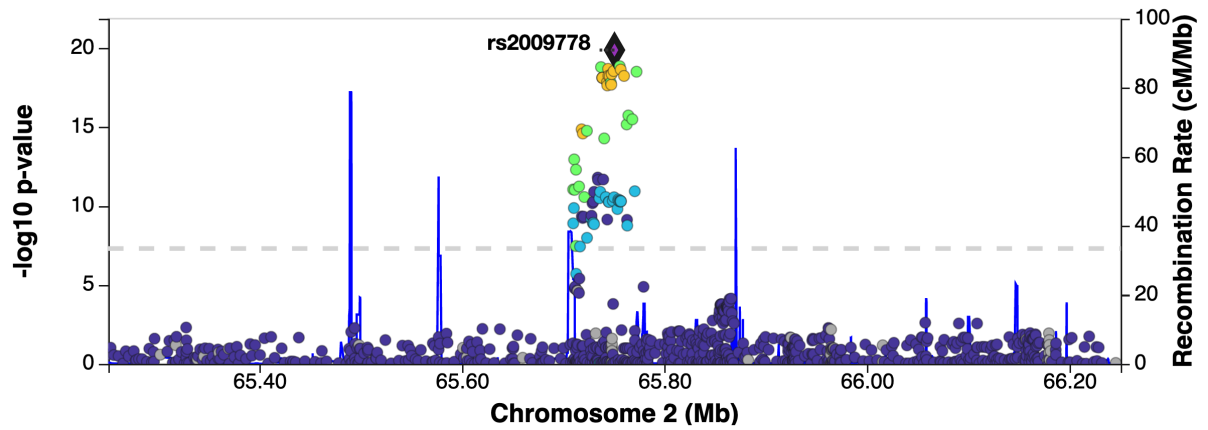


See page 2 for captions

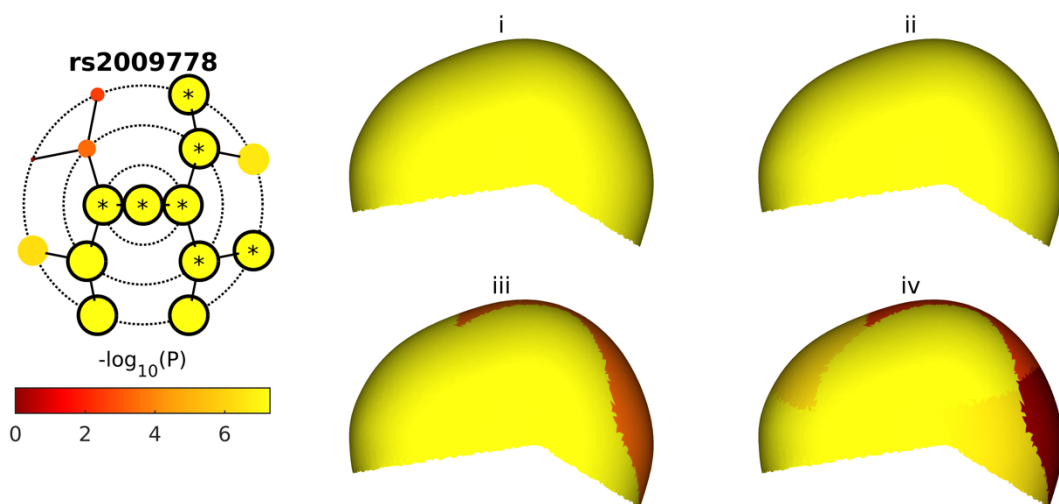
rs2009778

A

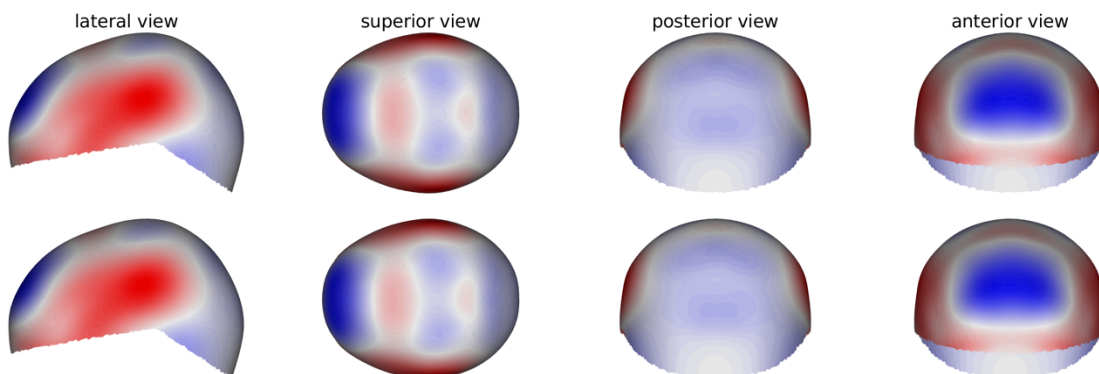
CV1



B



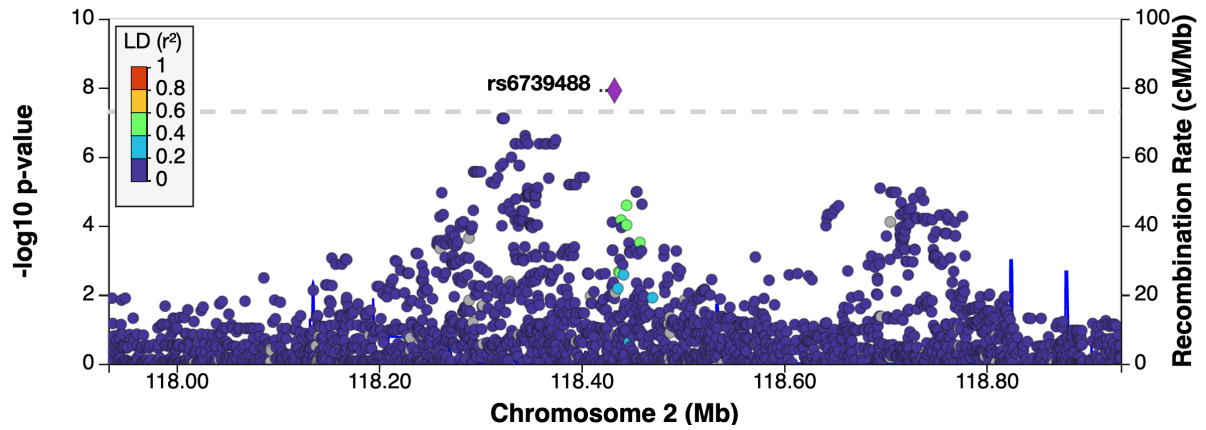
C



rs6739488

A

CV1

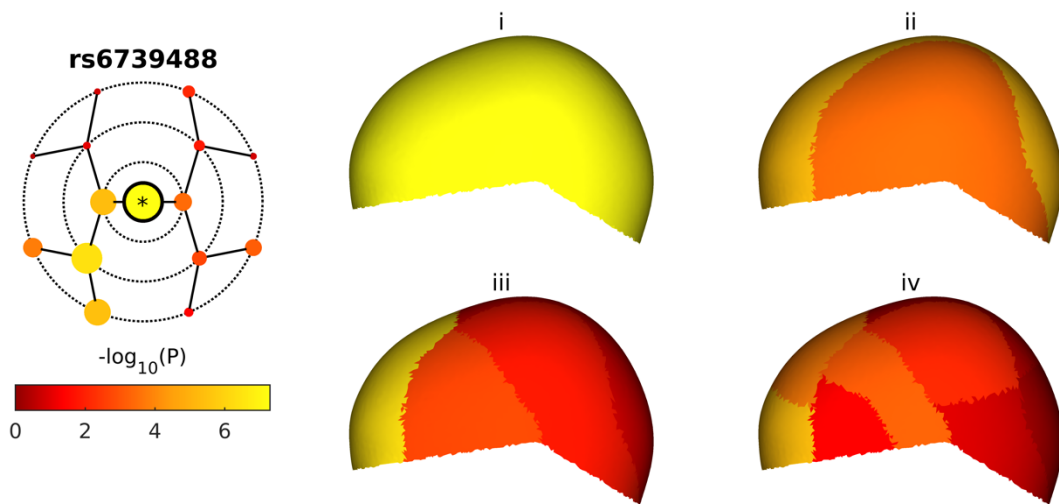


←CCDC93

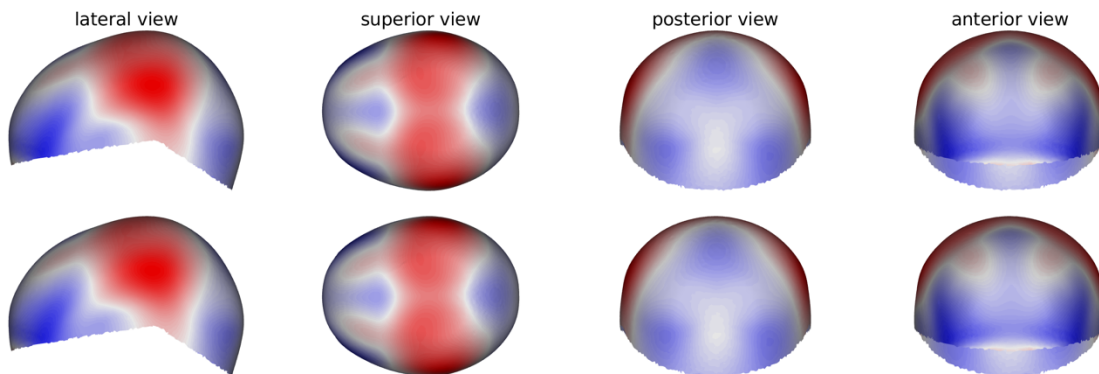
INSIG2→

←EN1

B



C

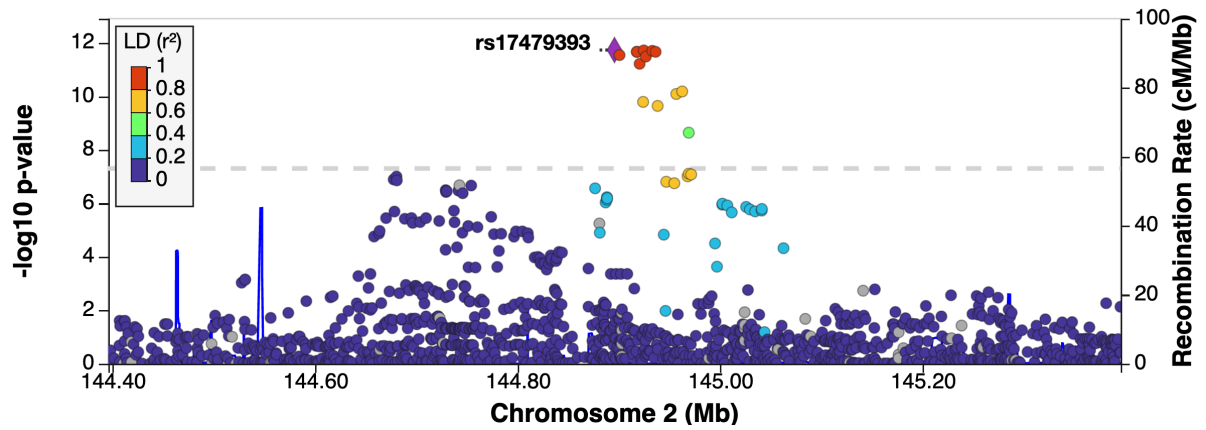


See page 2 for captions

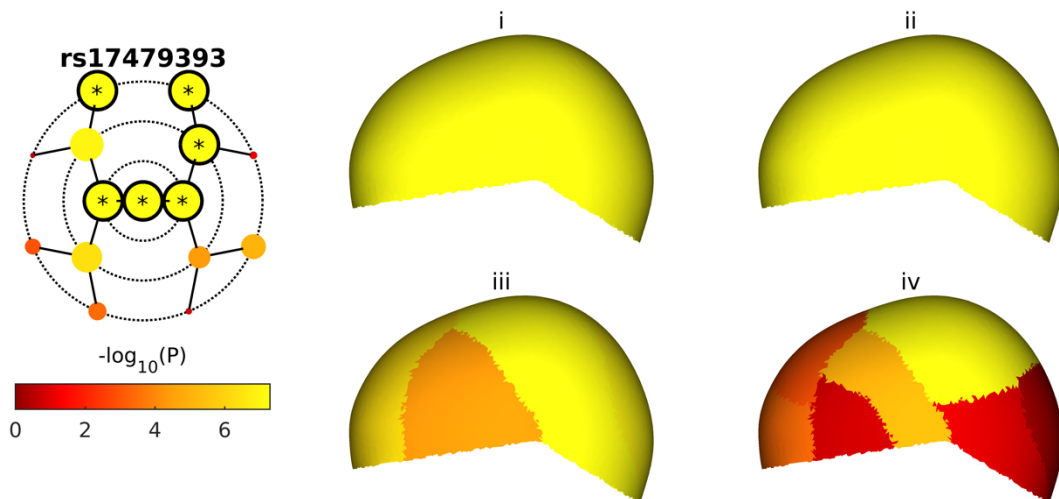
rs17479393

A

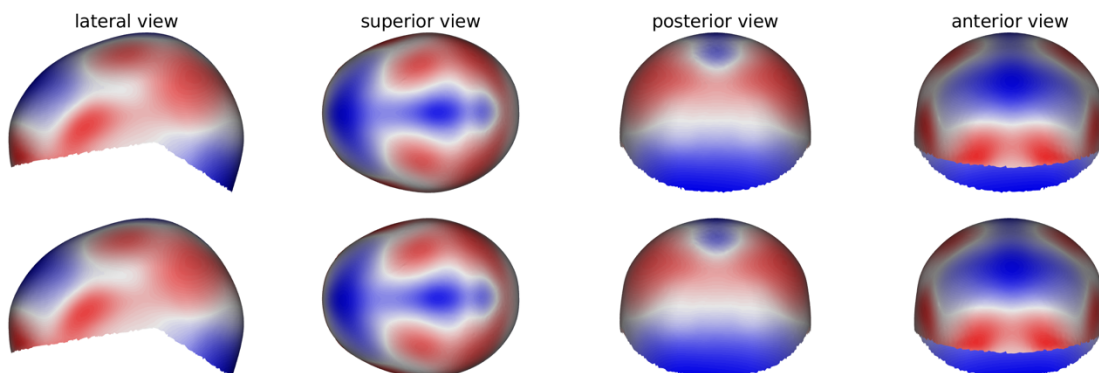
CV1



B



C

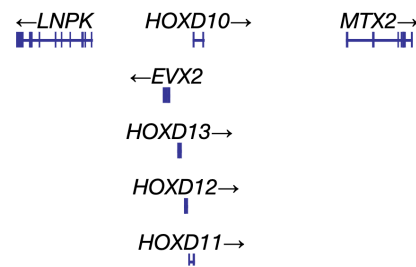
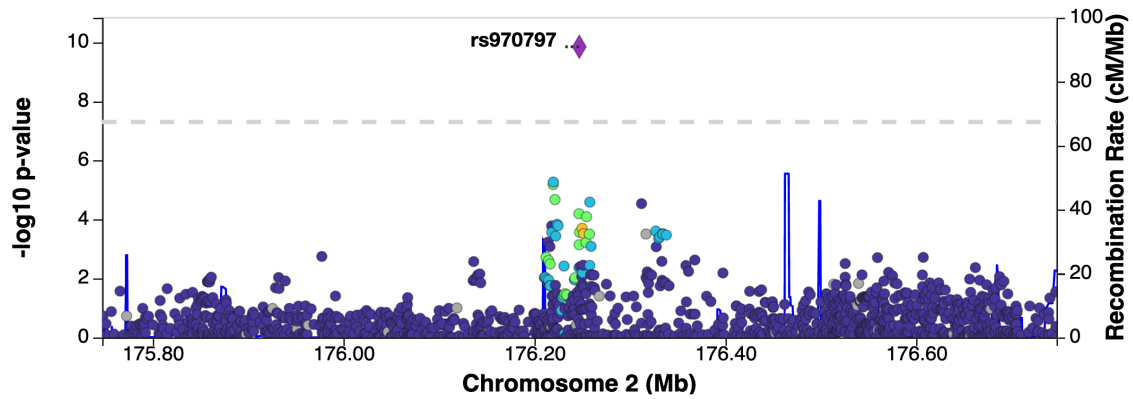


See page 2 for captions

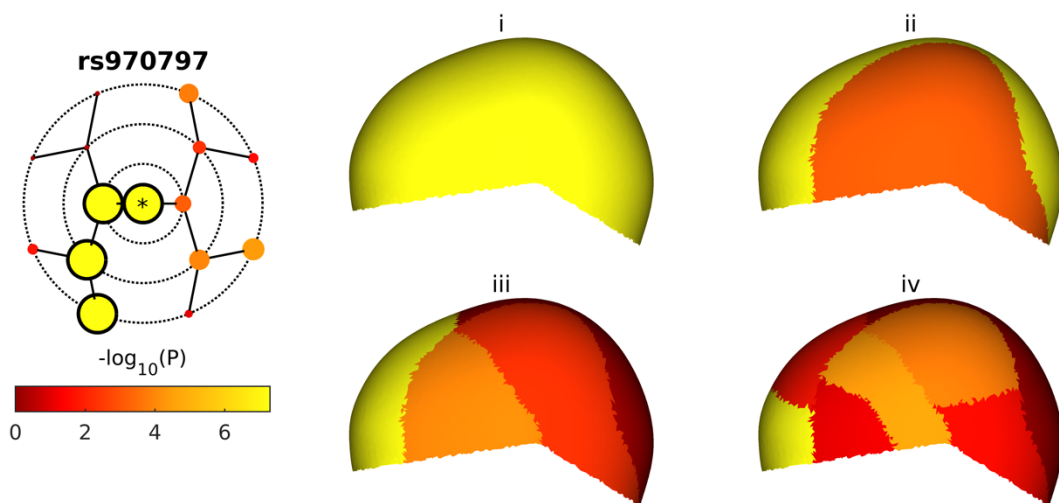
rs970797

A

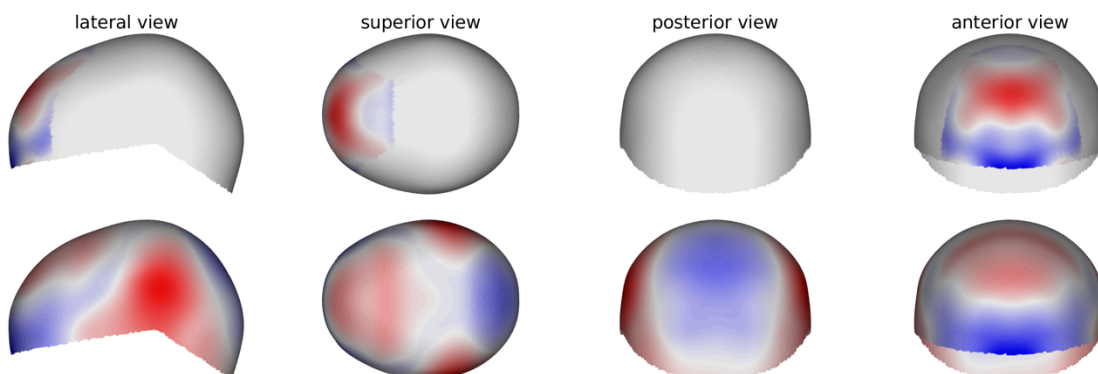
CV5



B



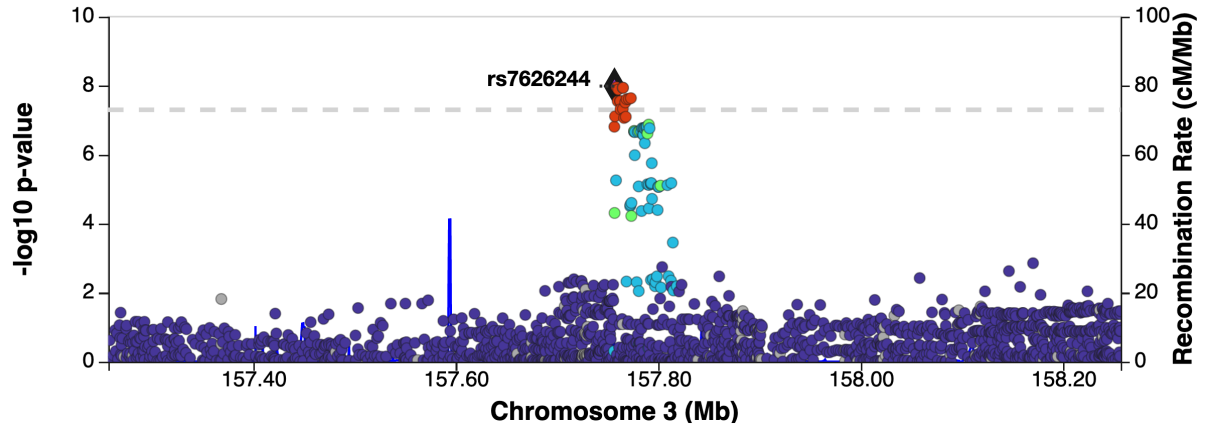
C



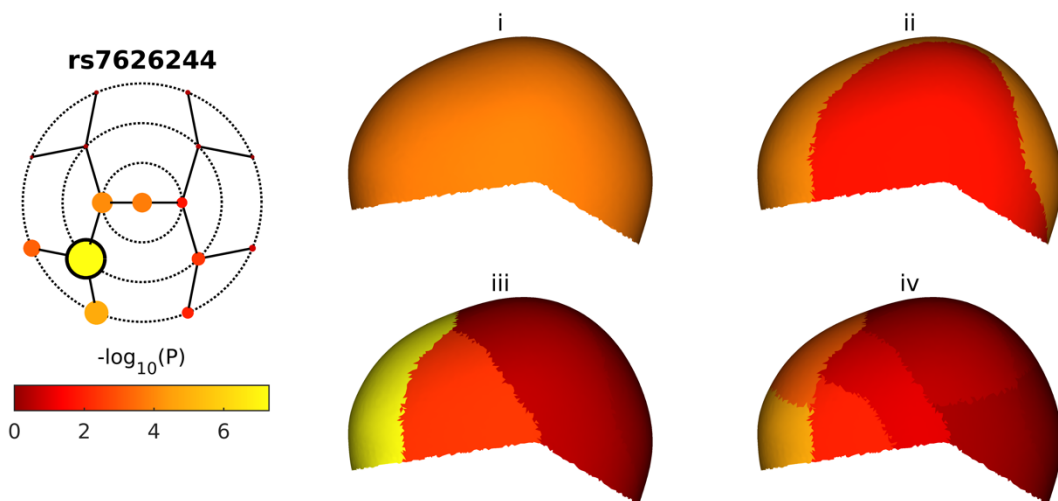
rs7626244

A

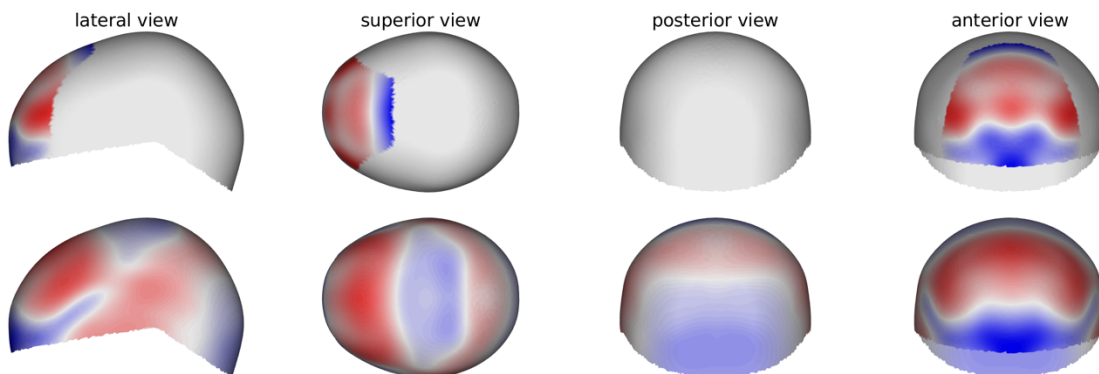
CV5



B



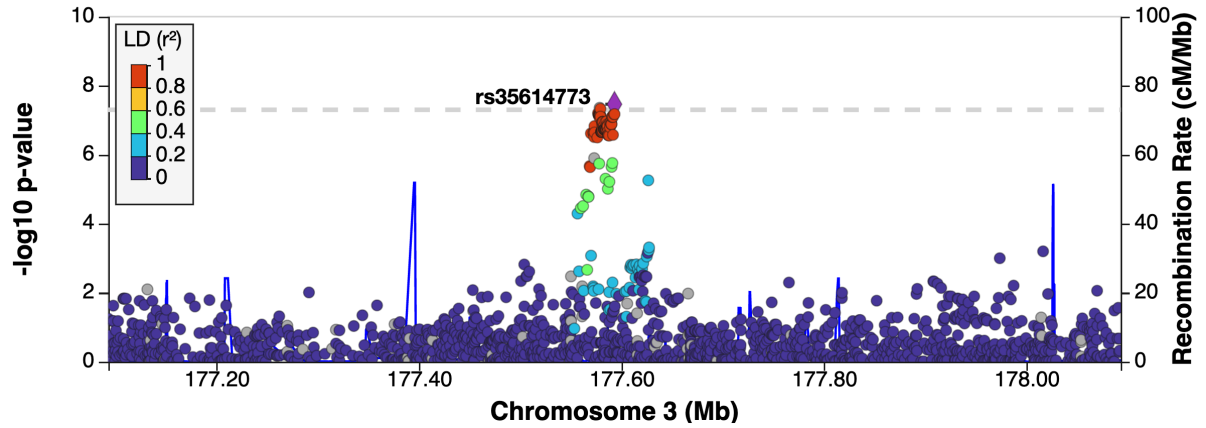
C



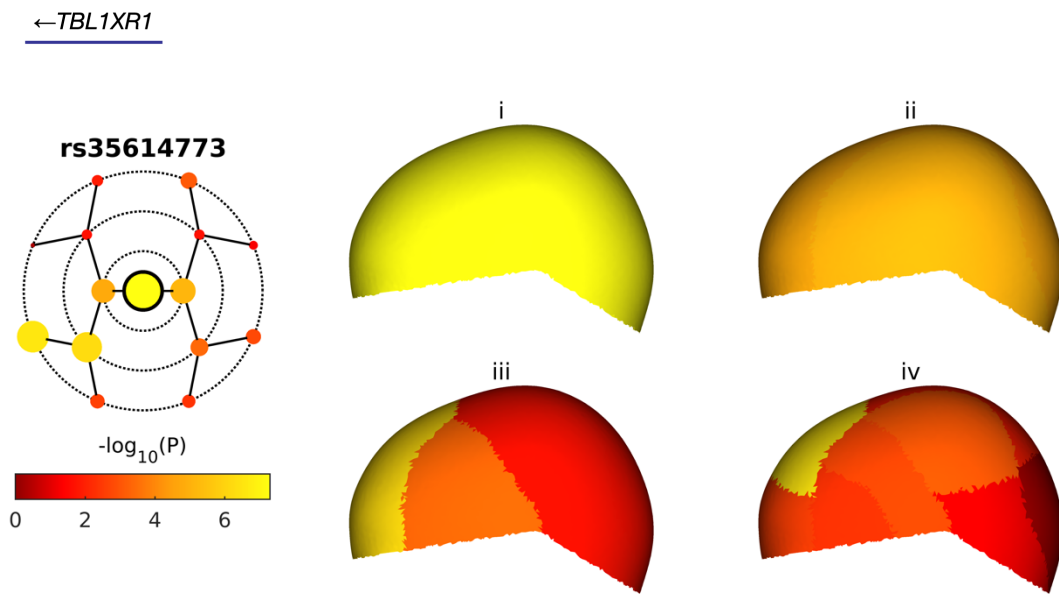
rs35614773

A

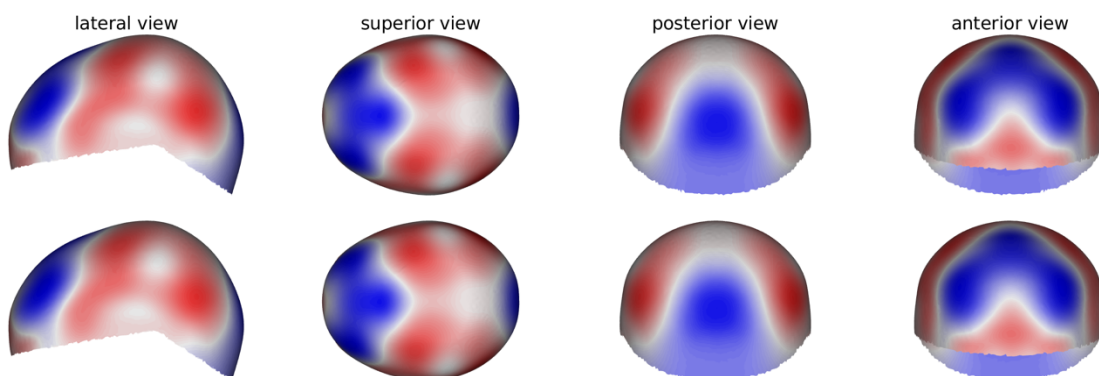
CV1



B



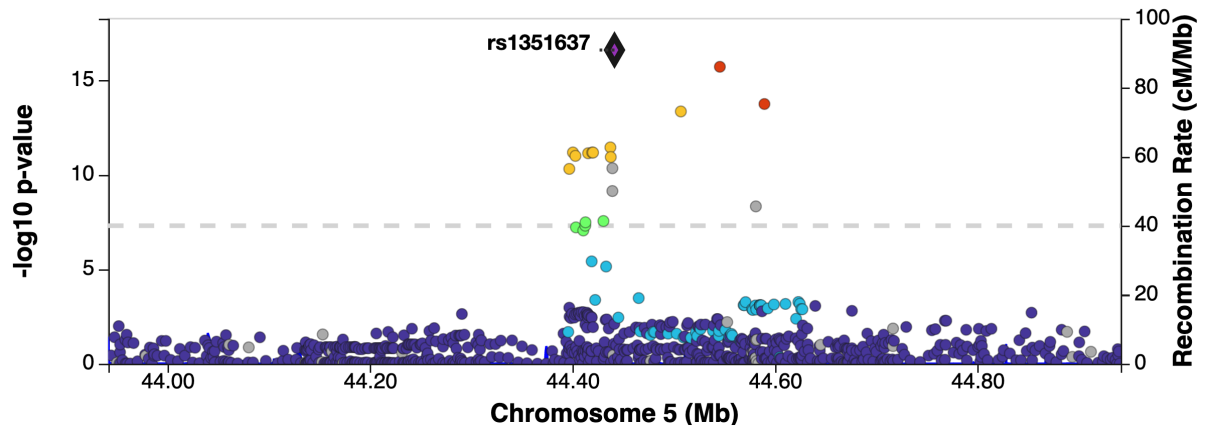
C



rs1351637

A

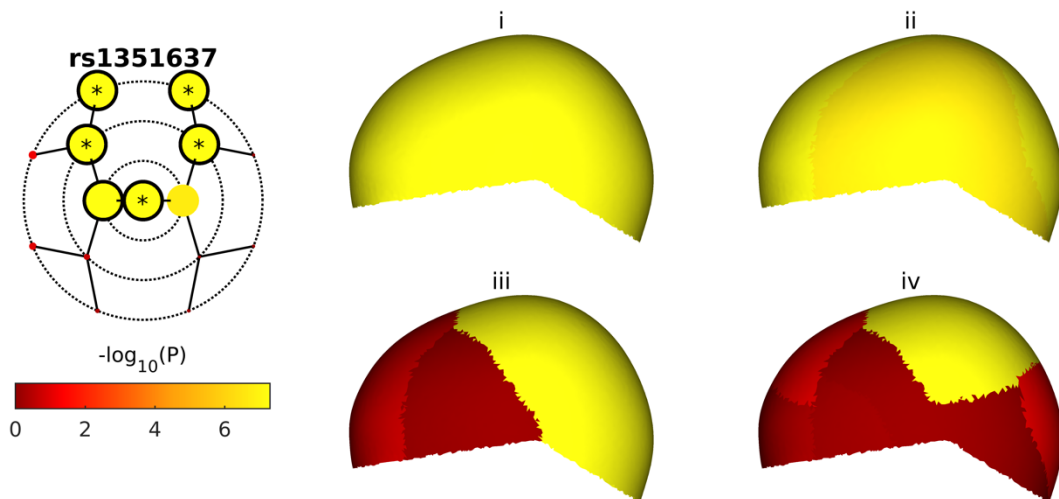
CV8



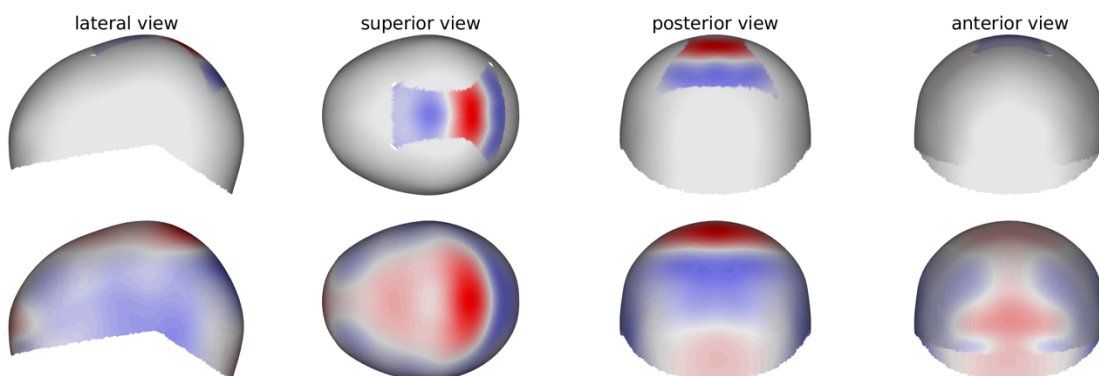
←FGF10

MRPS30→

B



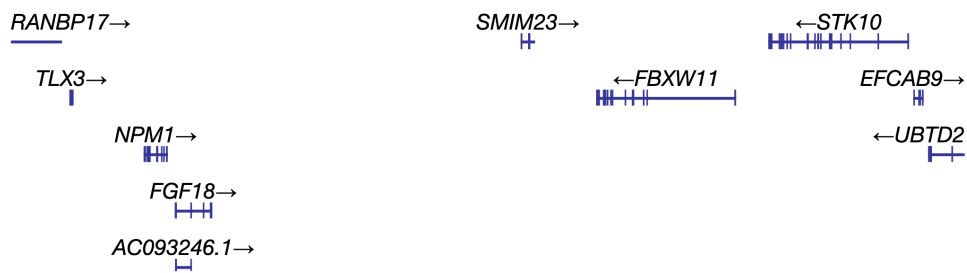
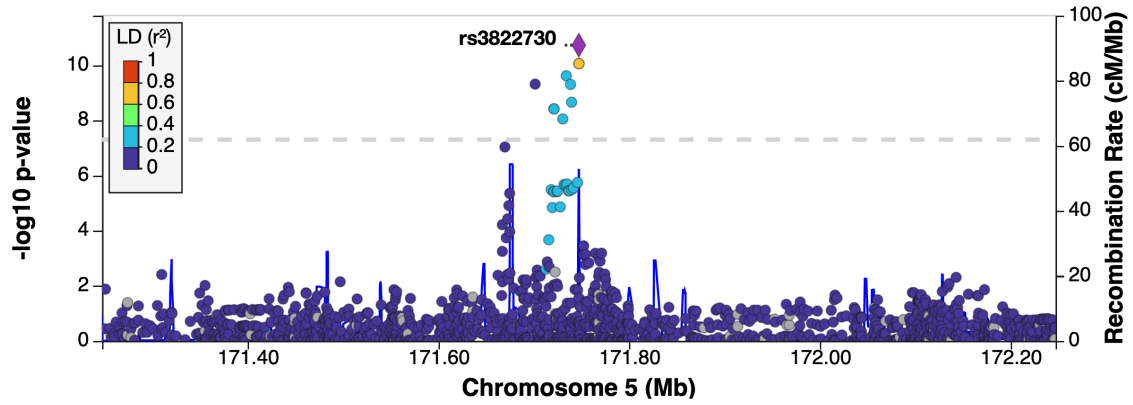
C



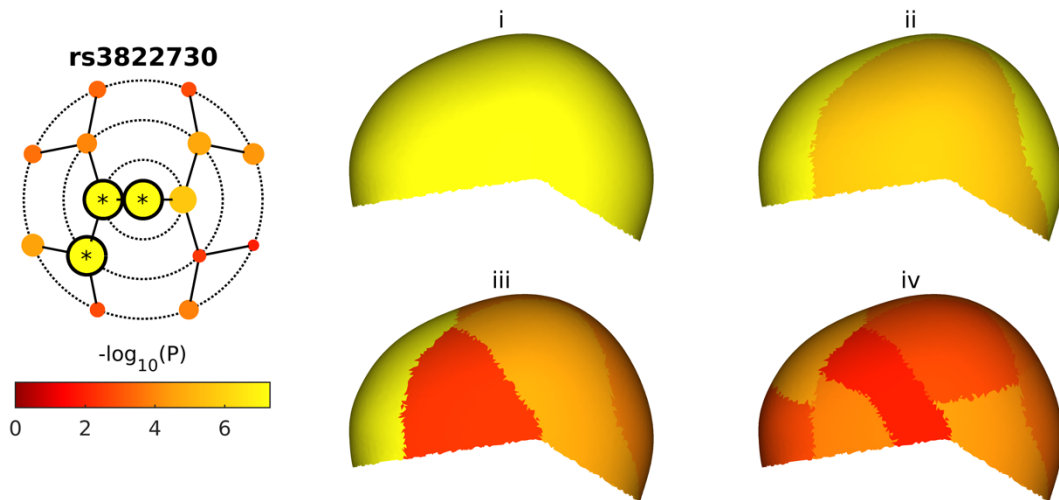
rs3822730

A

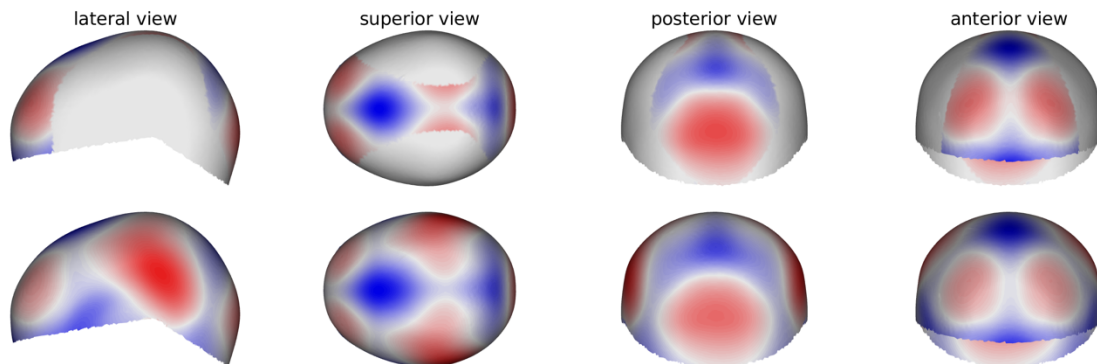
CV2



B



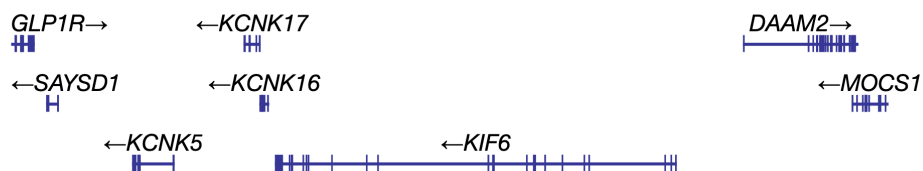
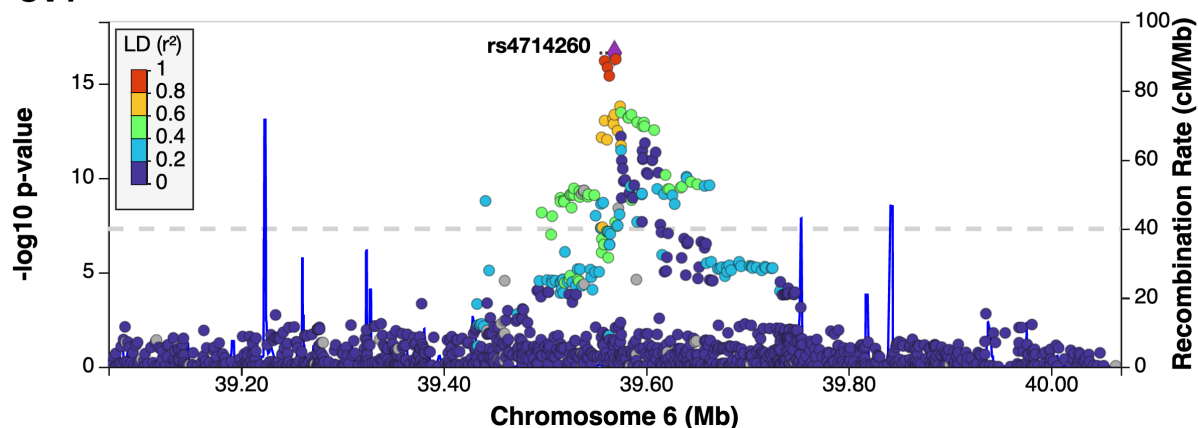
C



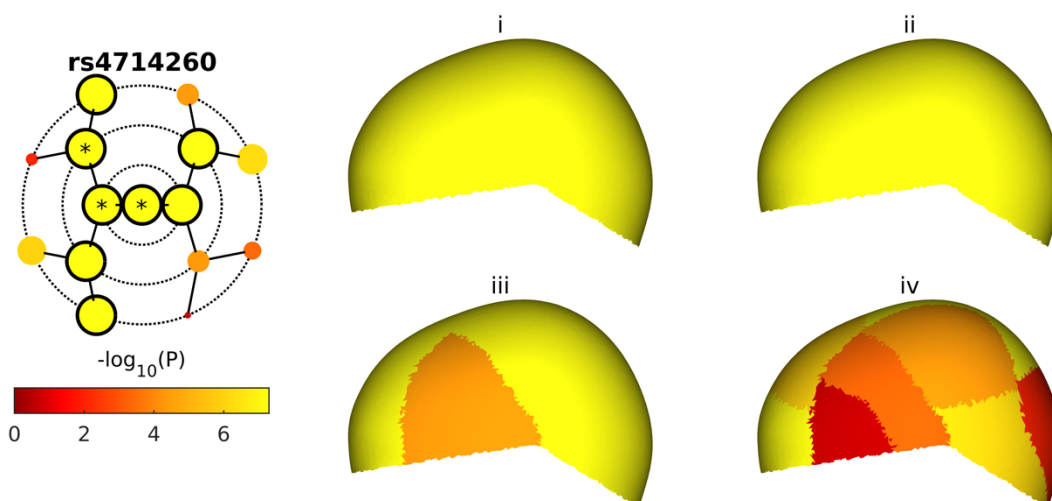
rs4714260

A

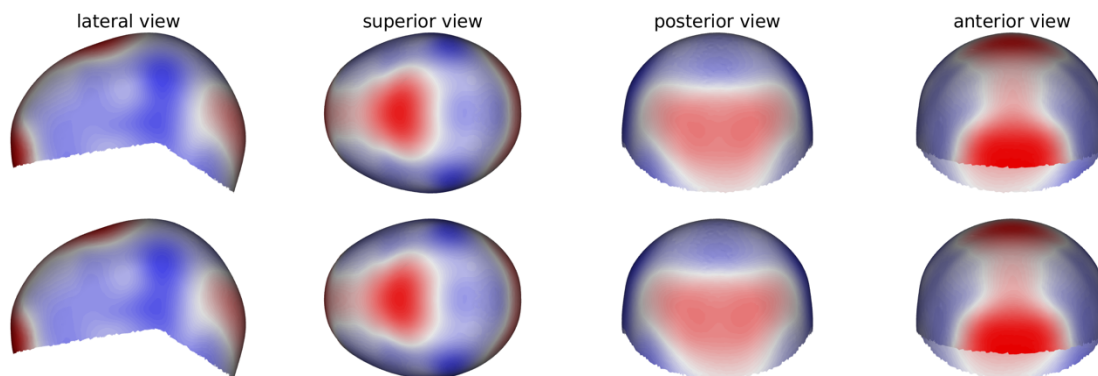
CV1



B



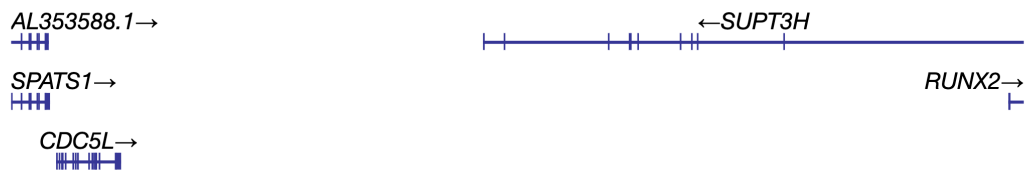
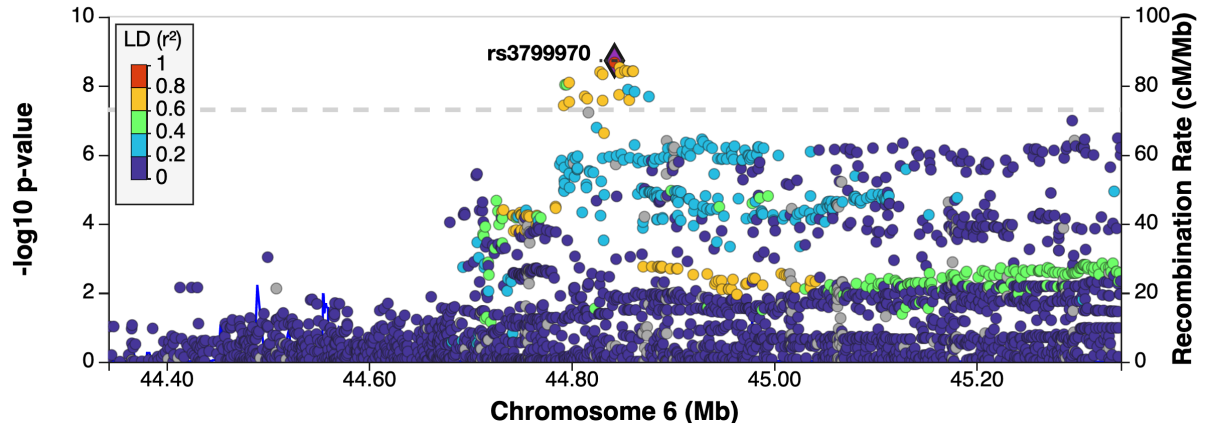
C



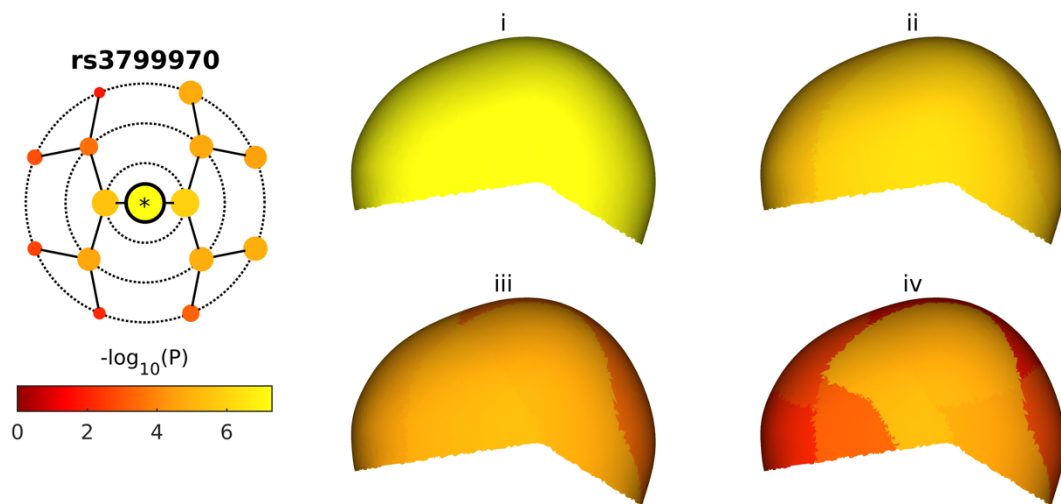
rs3799970

A

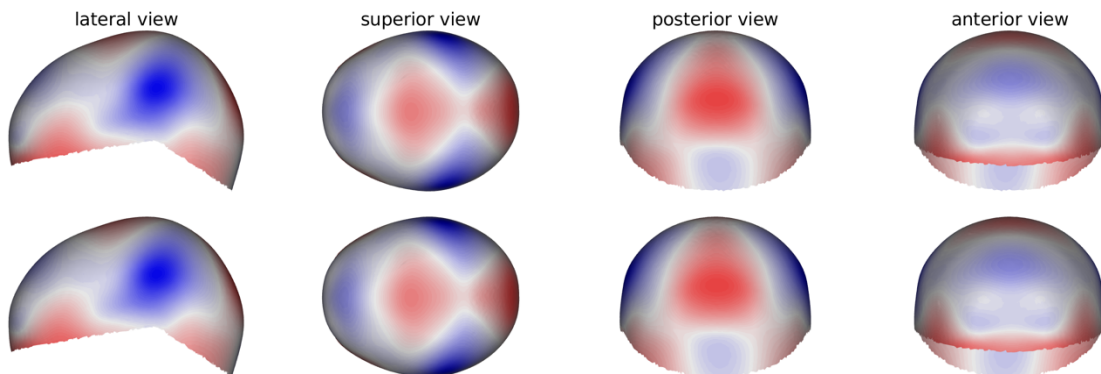
CV1



B



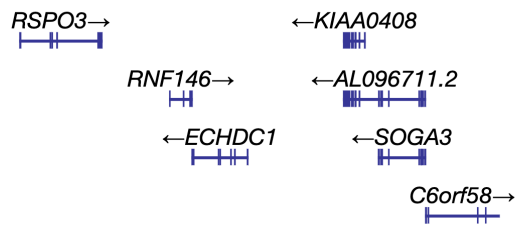
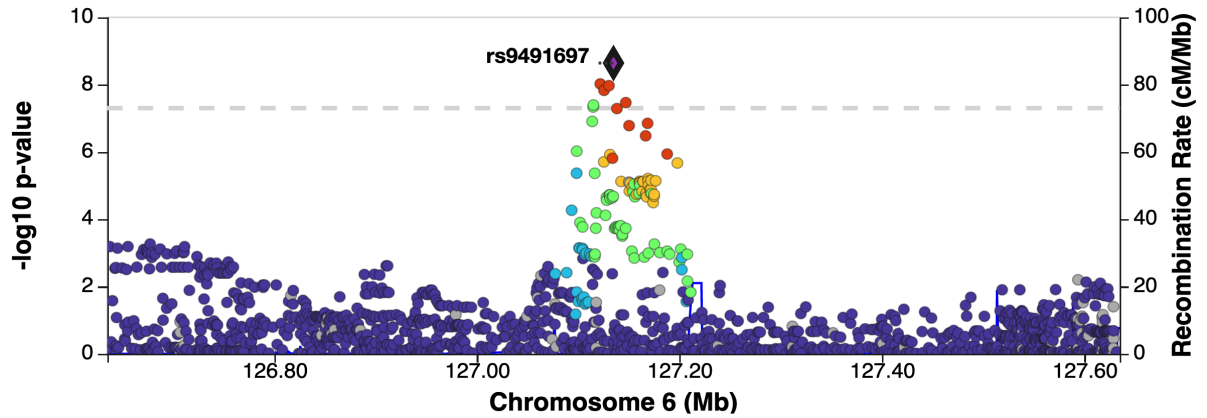
C



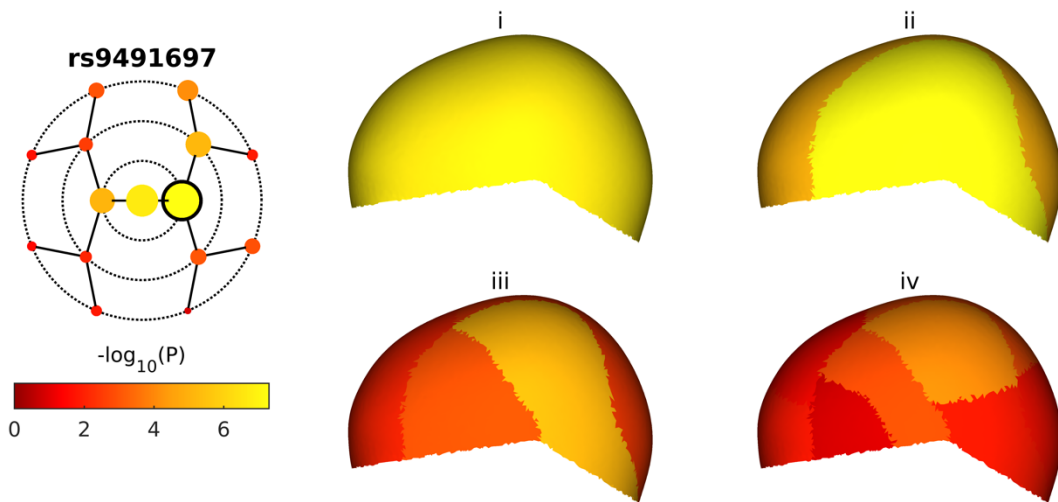
rs9491697

A

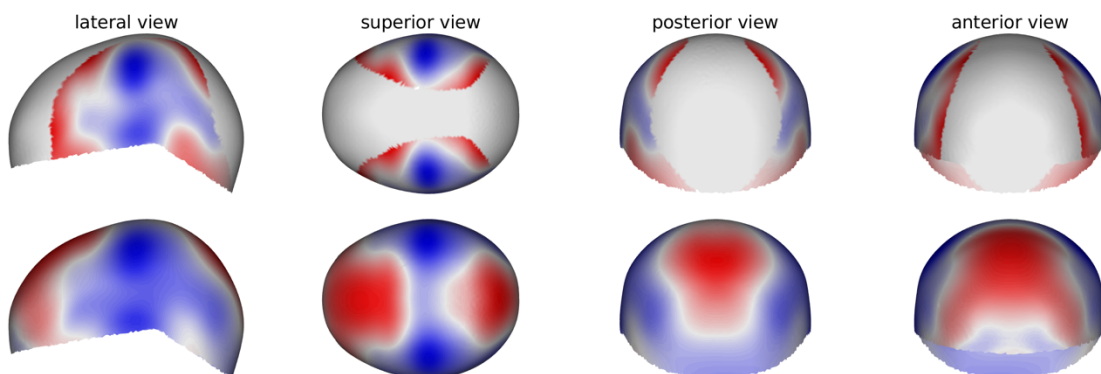
CV3



B



C

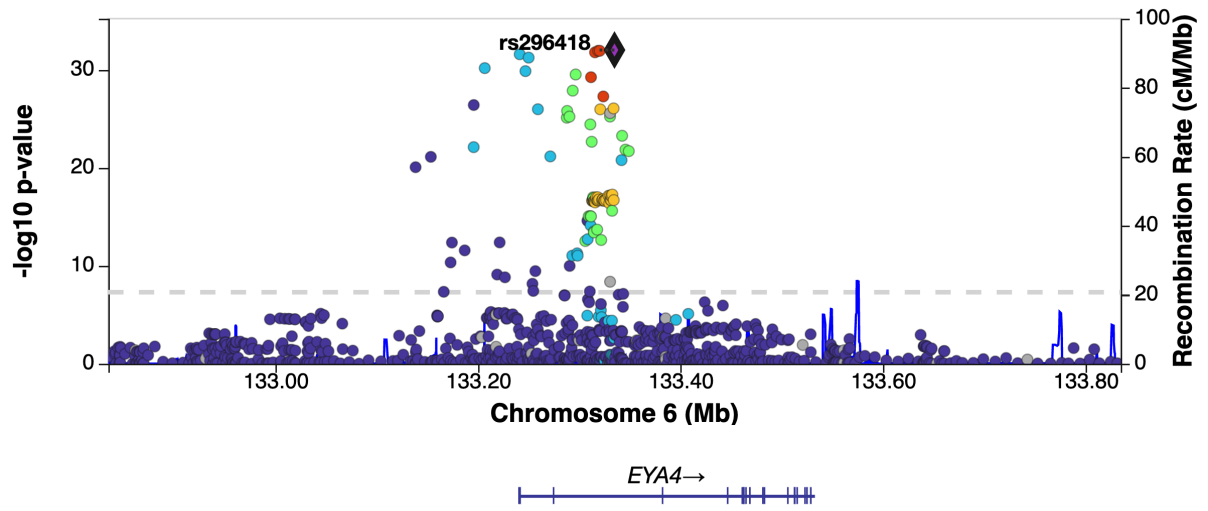


See page 2 for captions

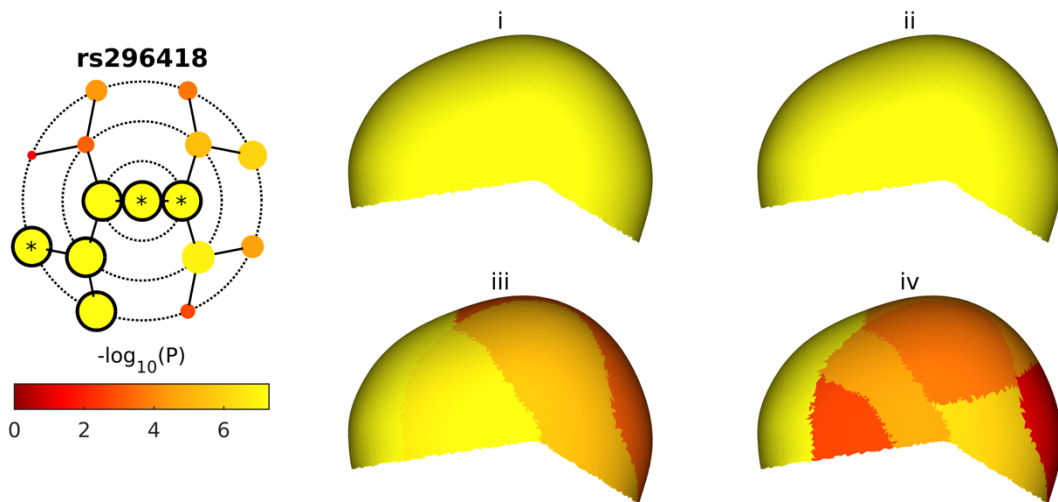
rs296418

A

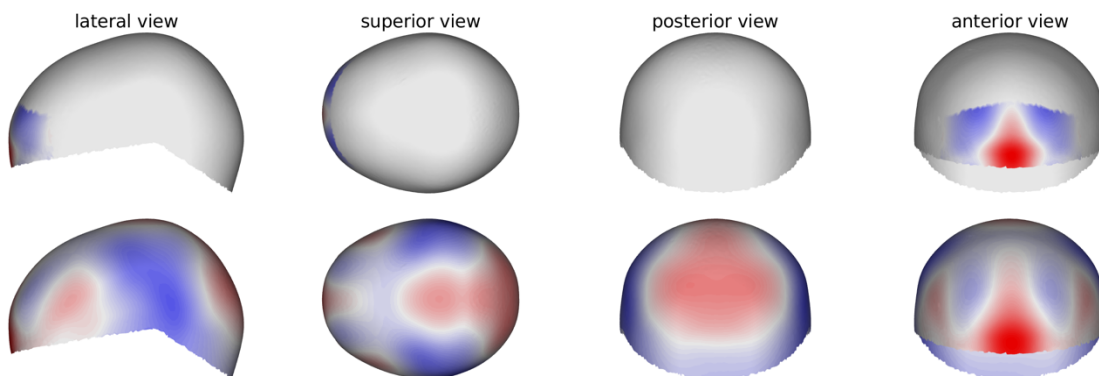
CV11



B



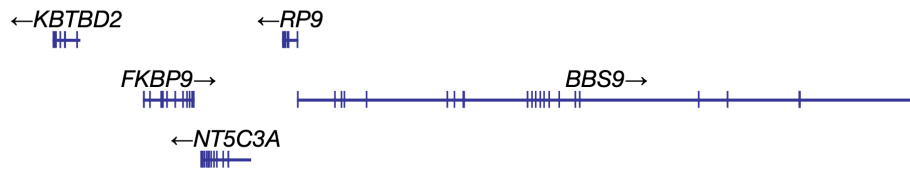
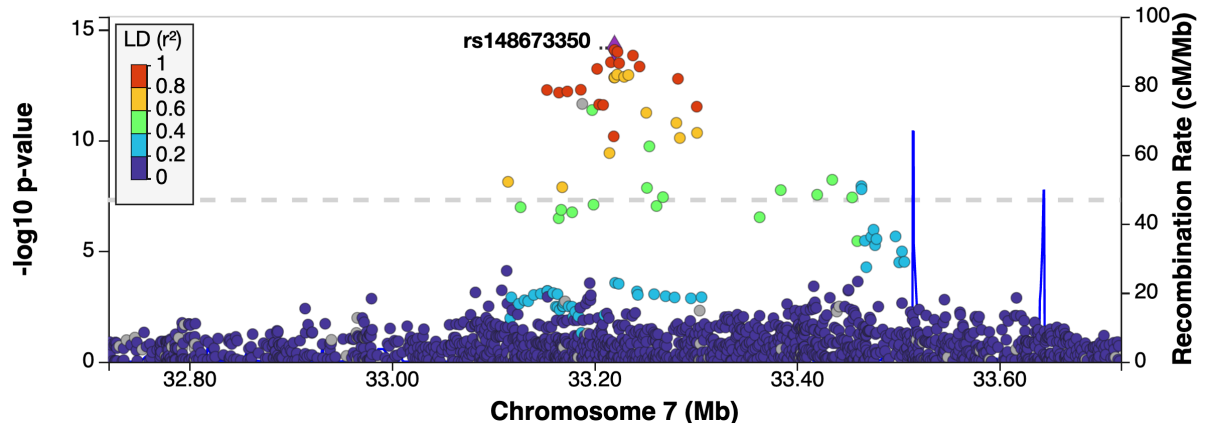
C



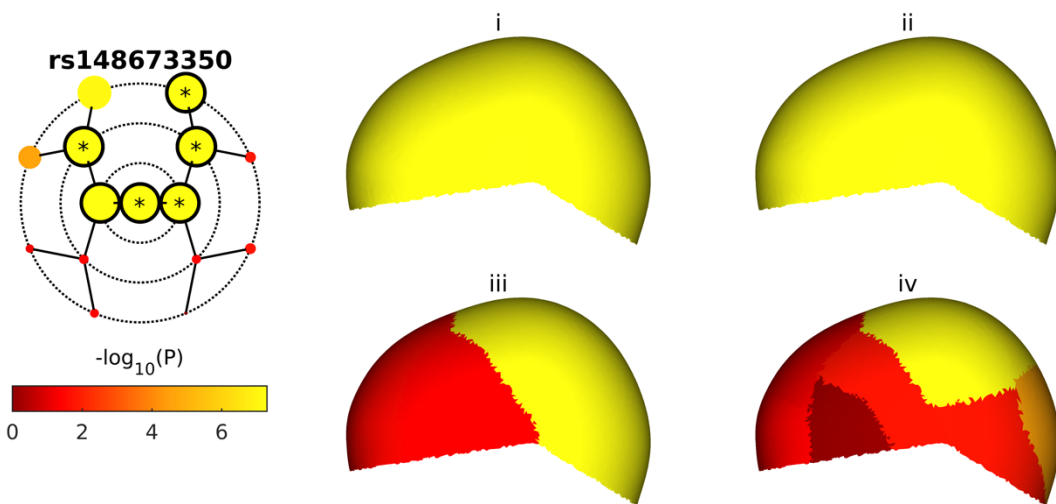
rs148673350

A

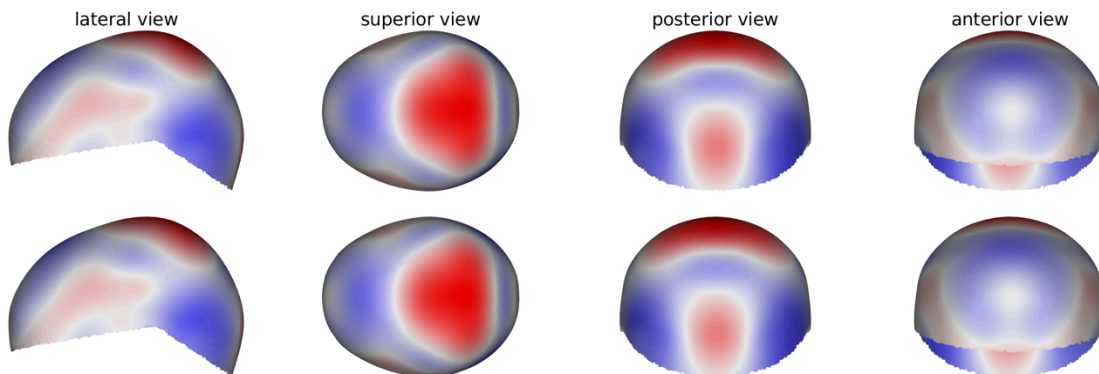
CV1



B



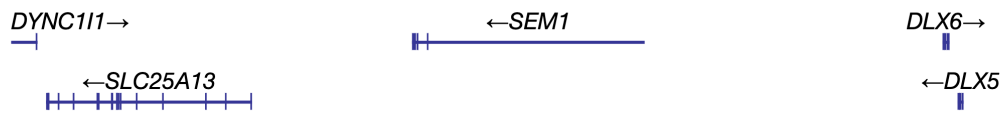
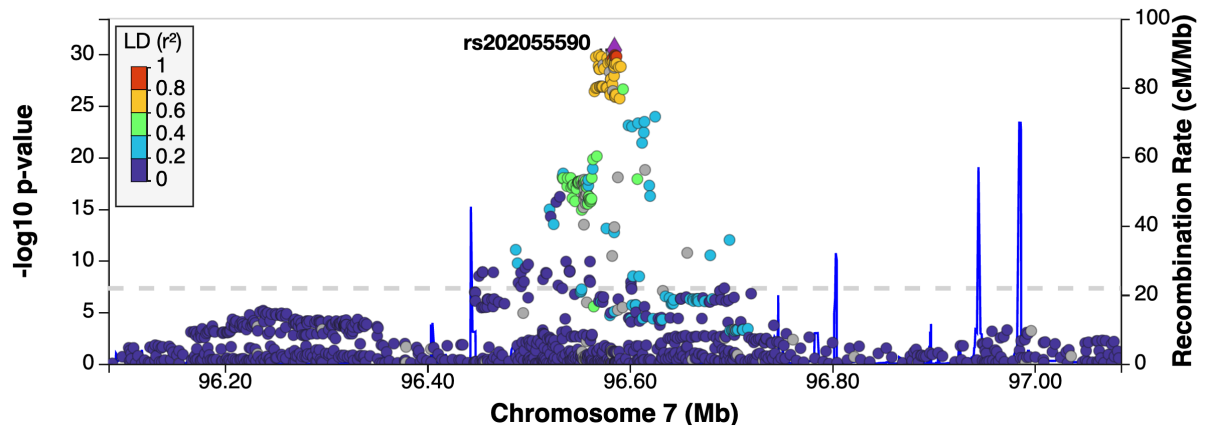
C



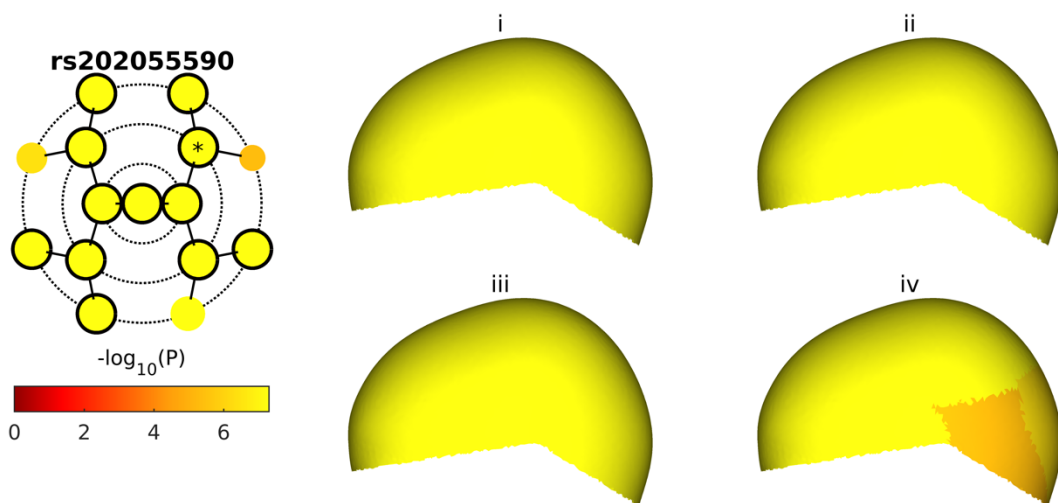
rs202055590

A

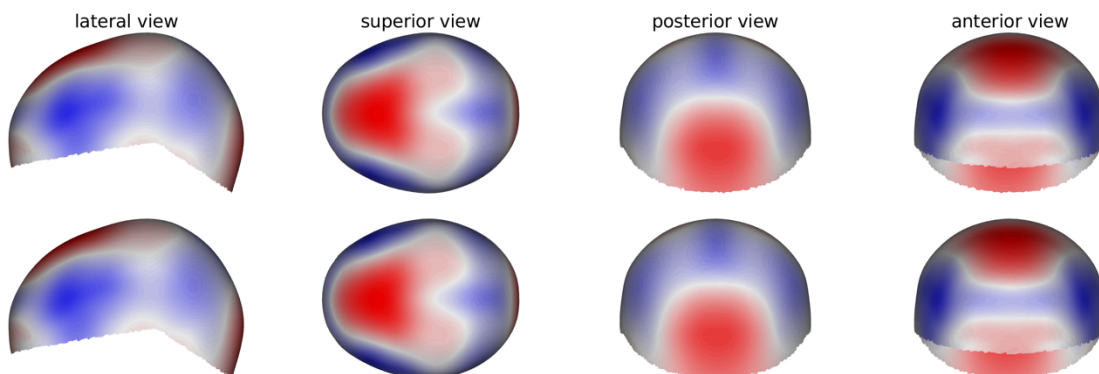
CV1



B



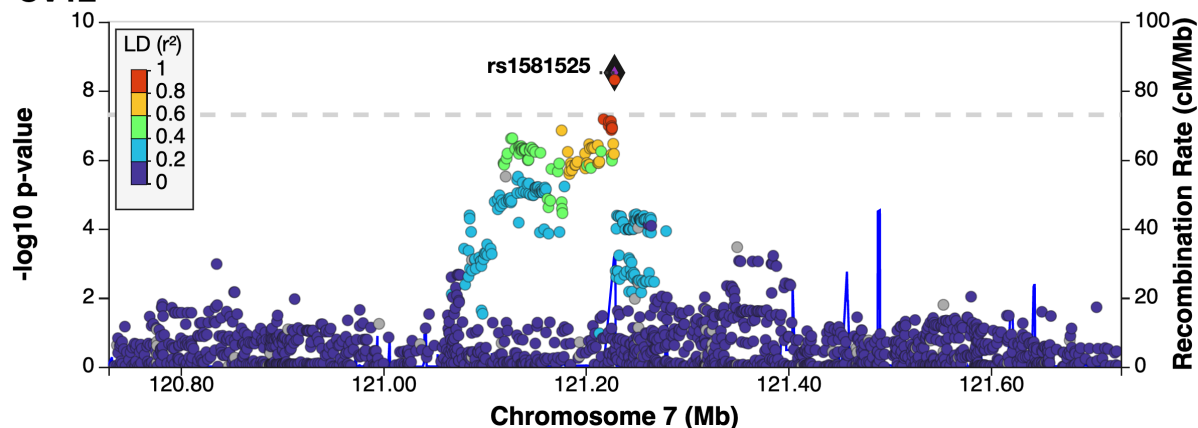
C



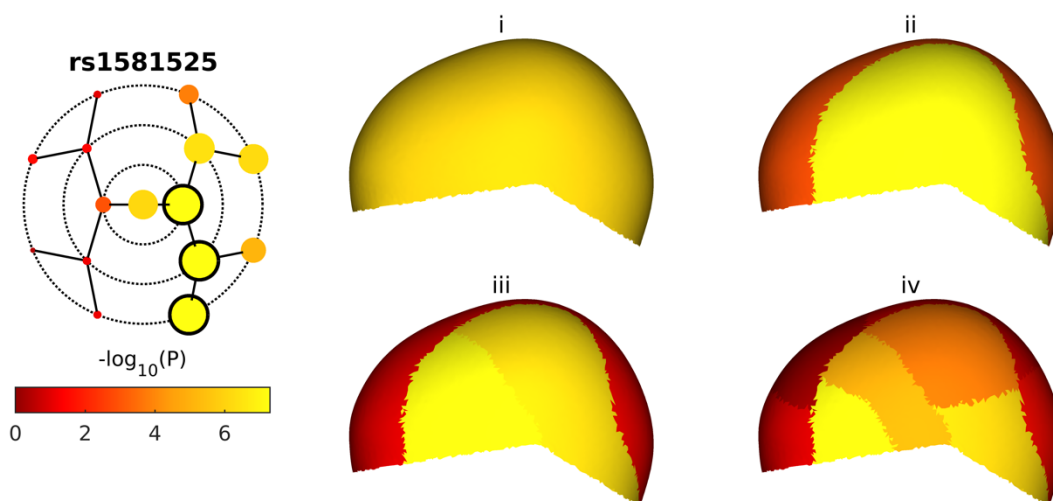
rs1581525

A

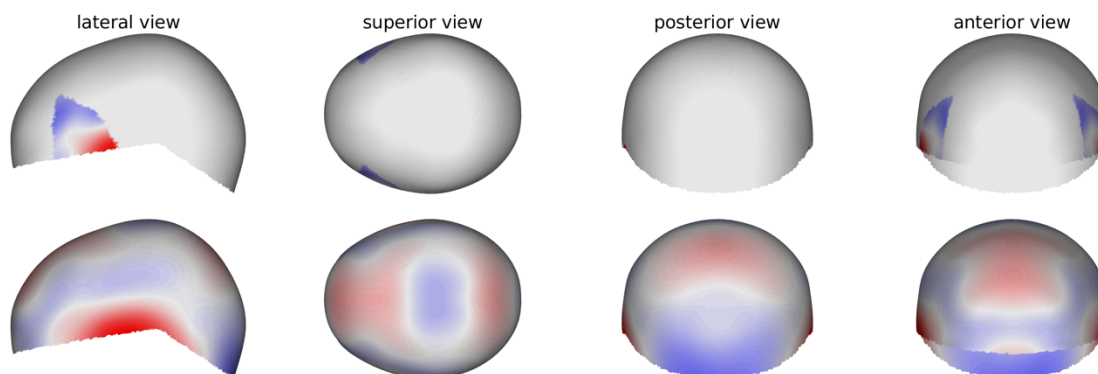
CV12



B



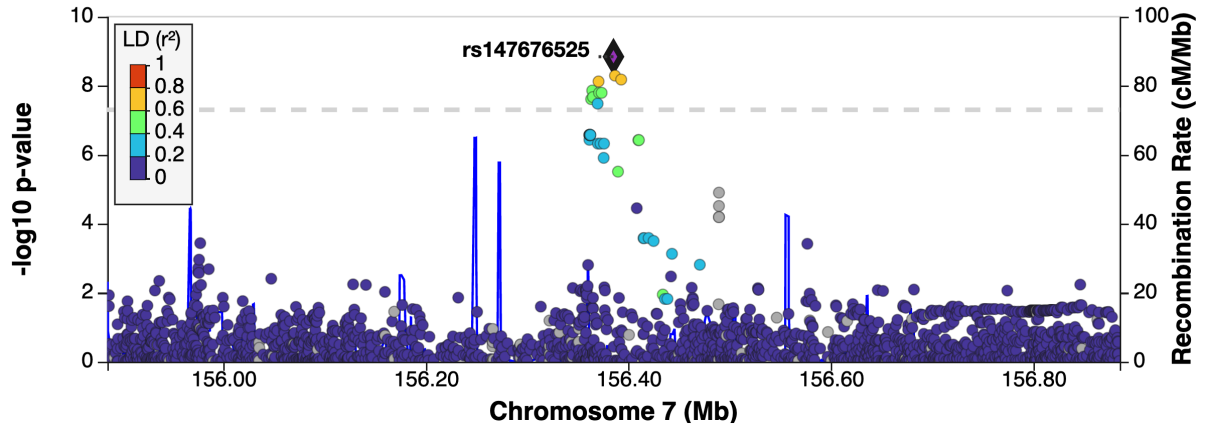
C



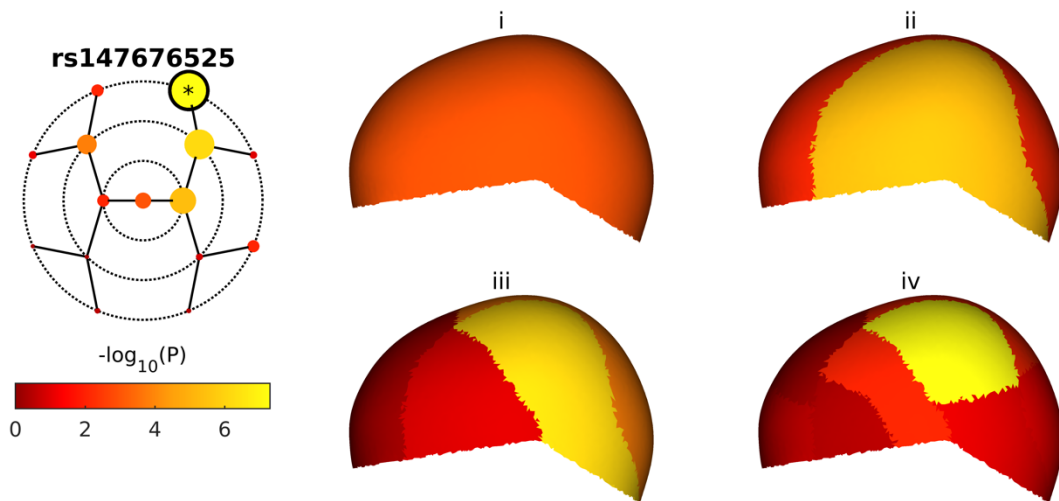
rs147676525

A

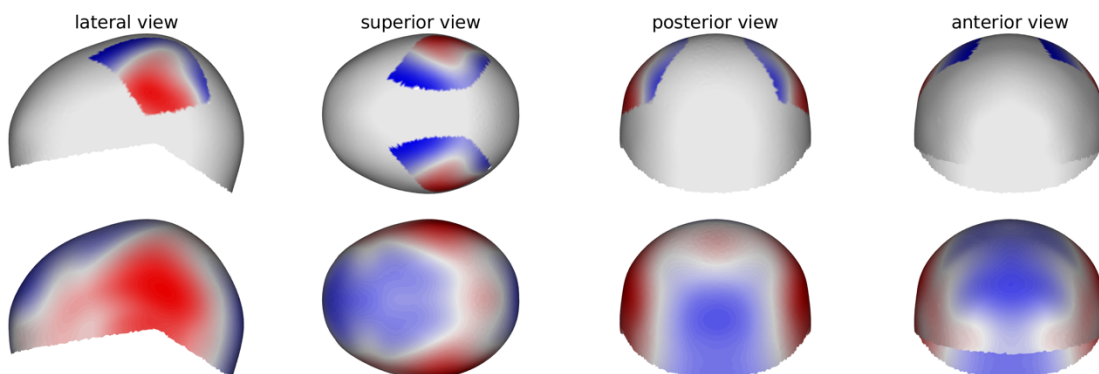
CV15



B



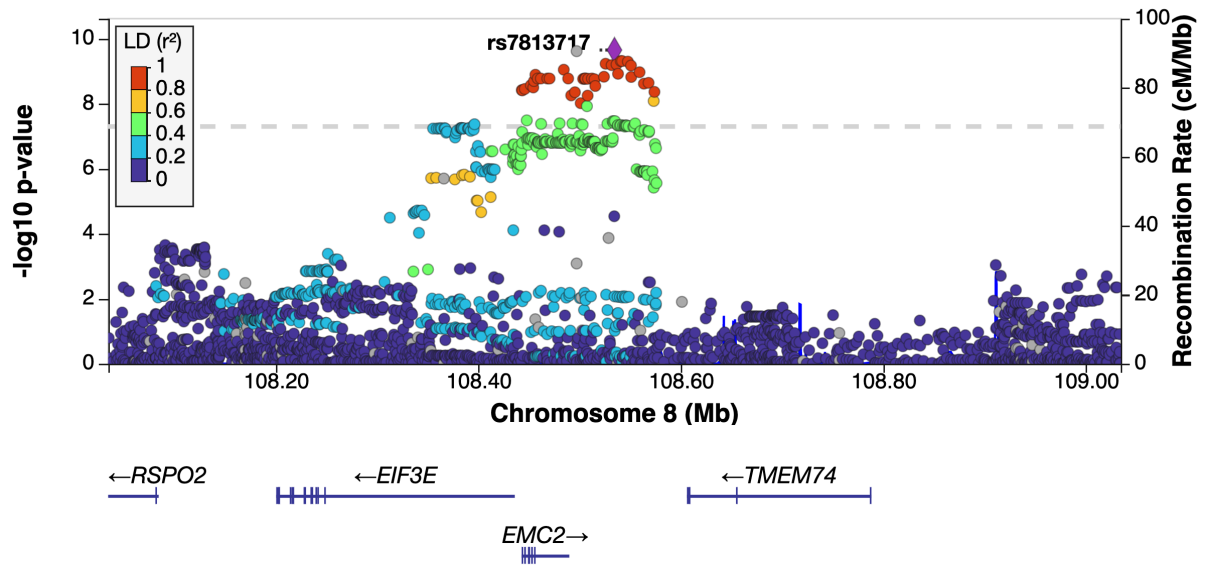
C



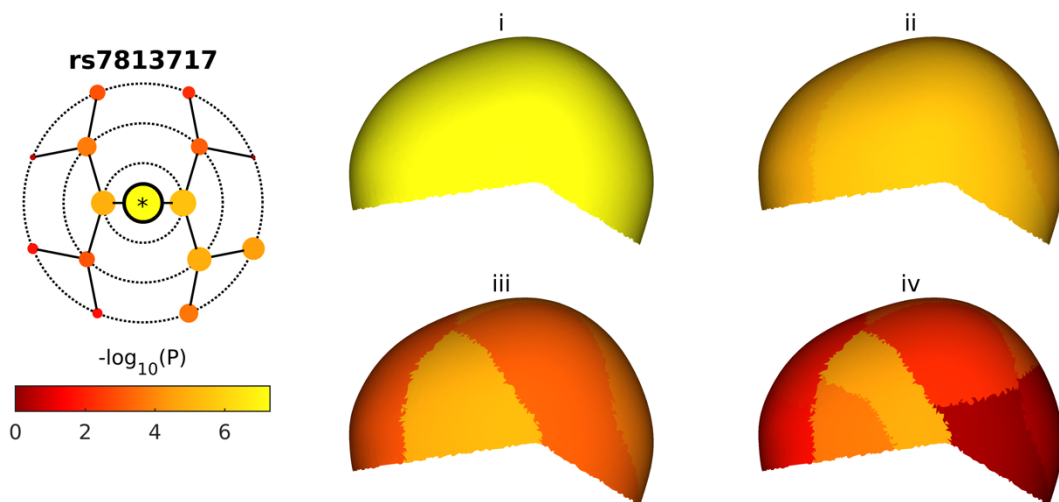
rs7813717

A

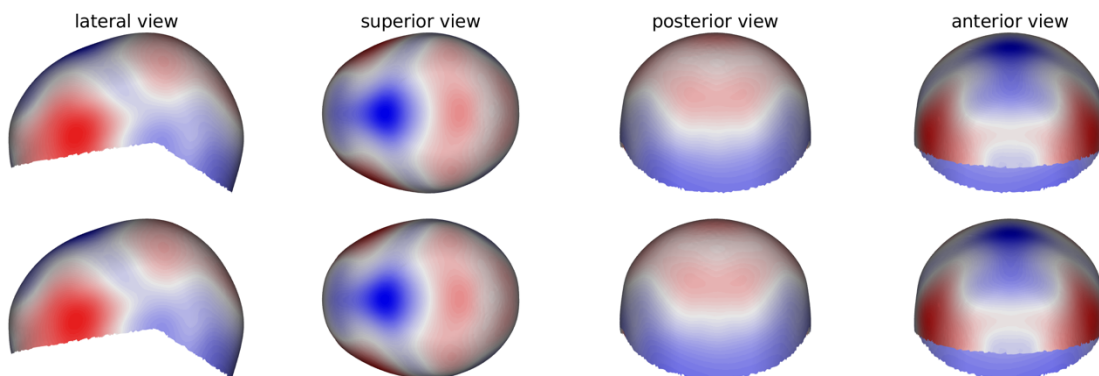
CV1



B



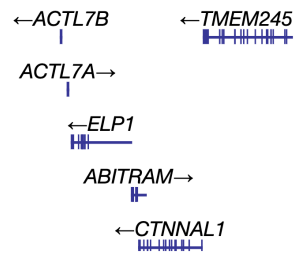
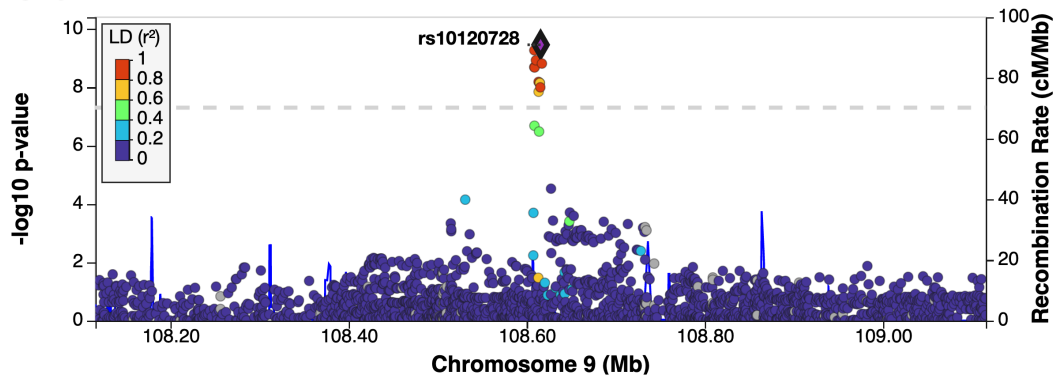
C



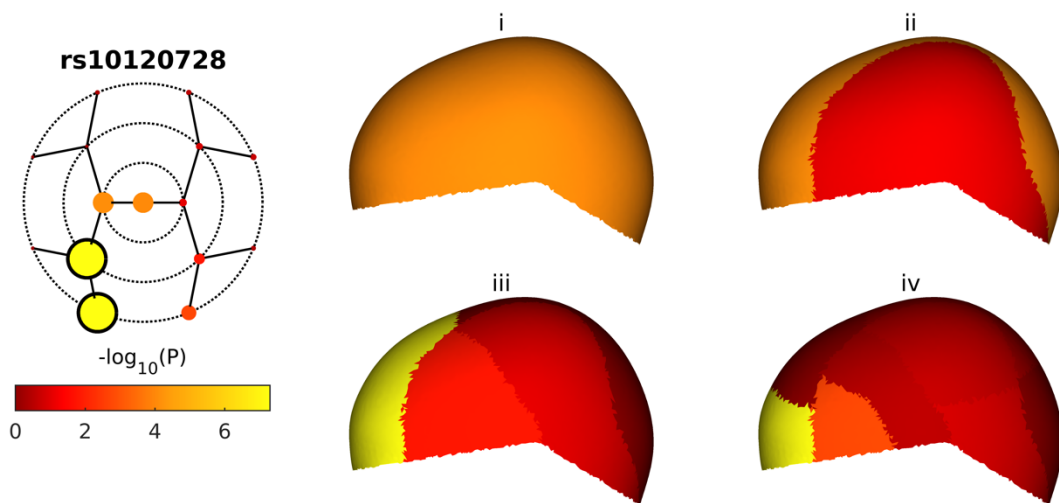
rs10120728

A

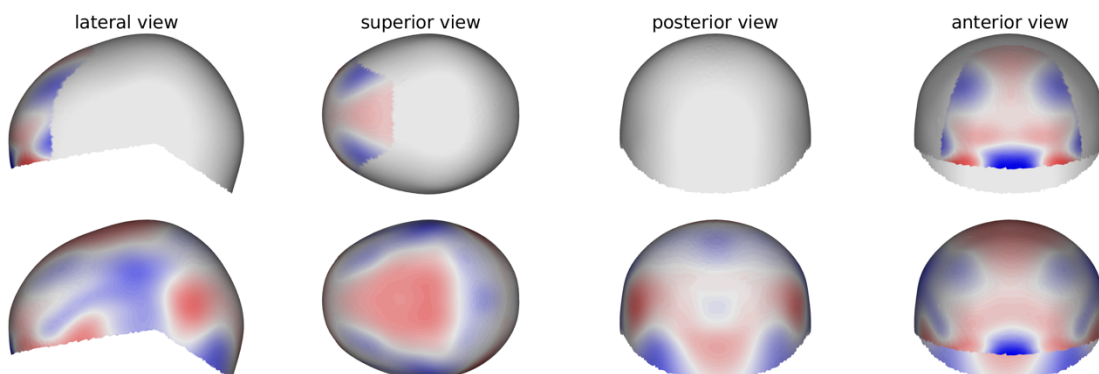
CV5



B



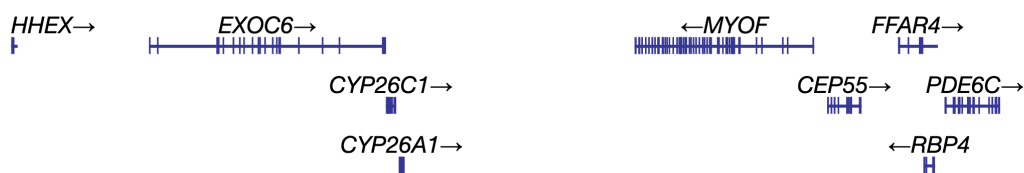
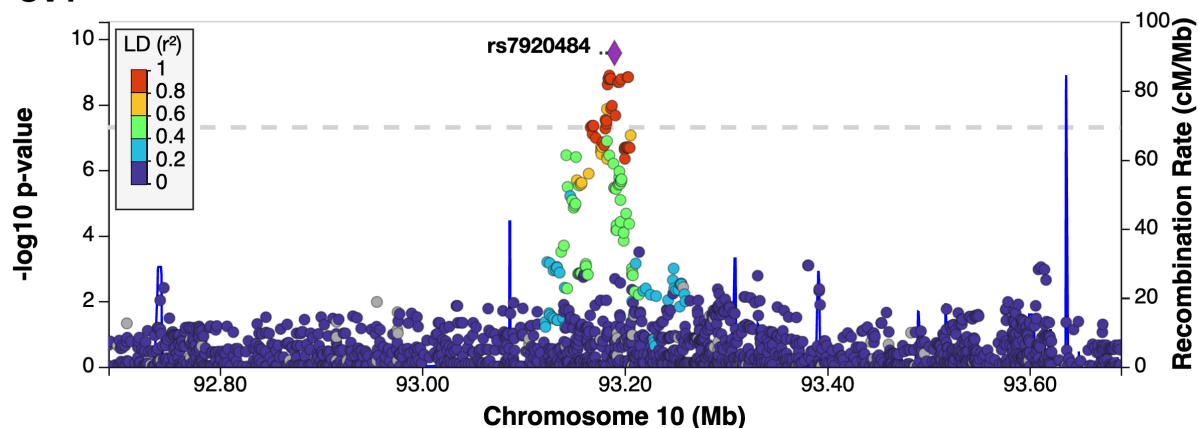
C



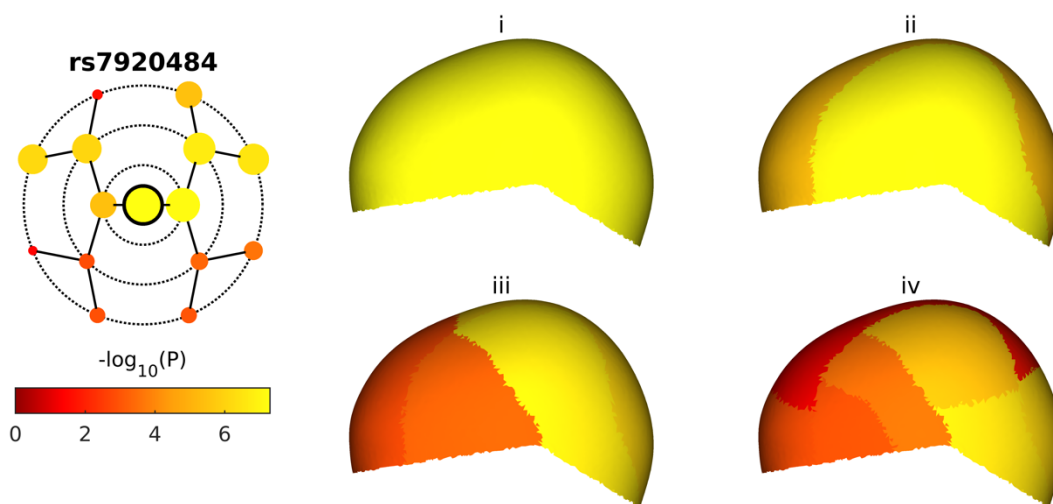
rs7920484

A

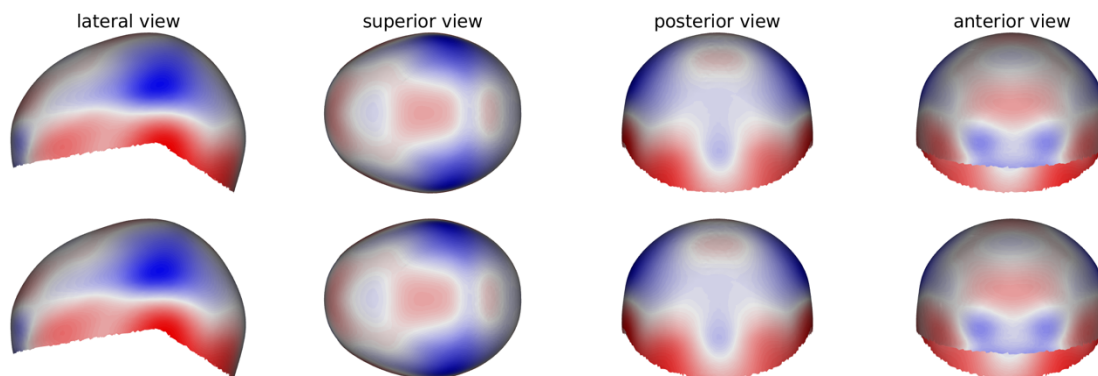
CV1



B



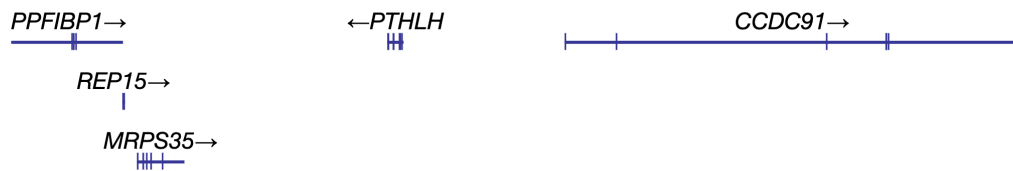
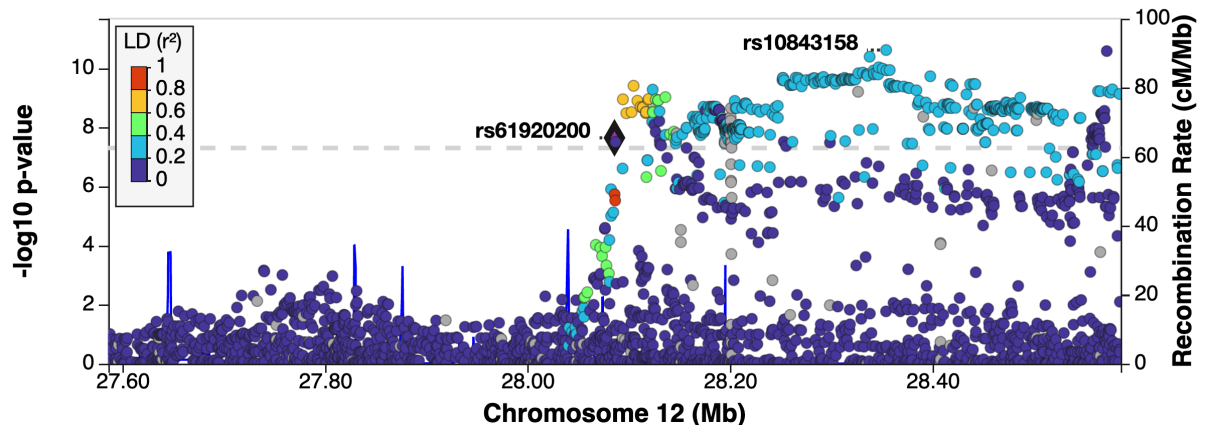
C



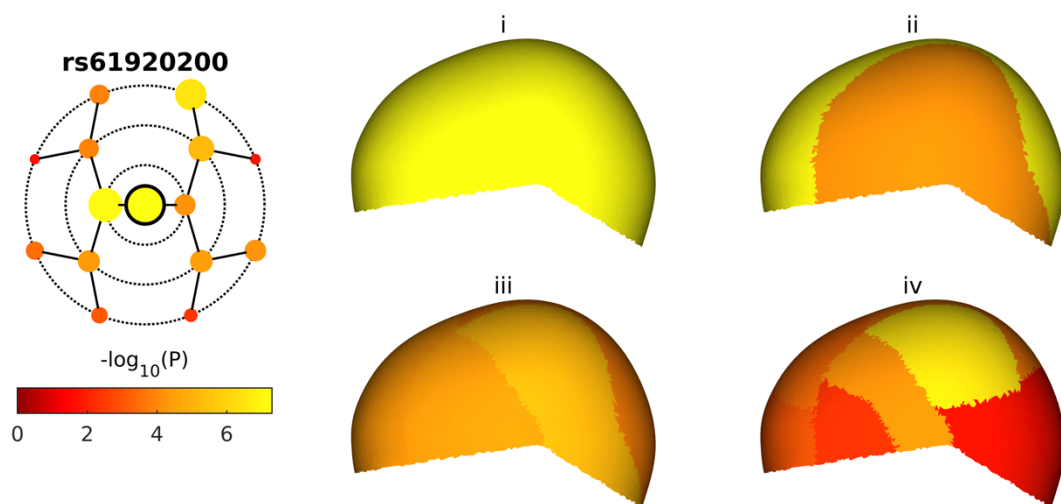
rs61920200

A

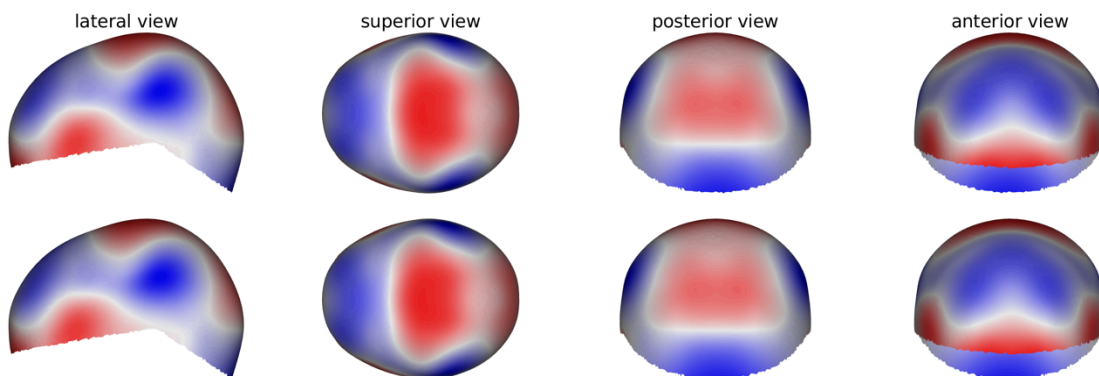
CV1



B



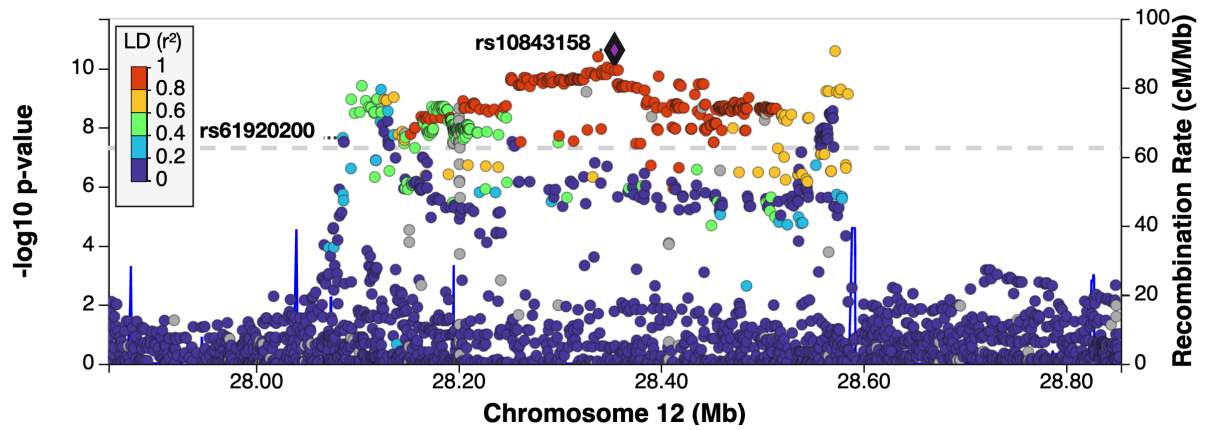
C



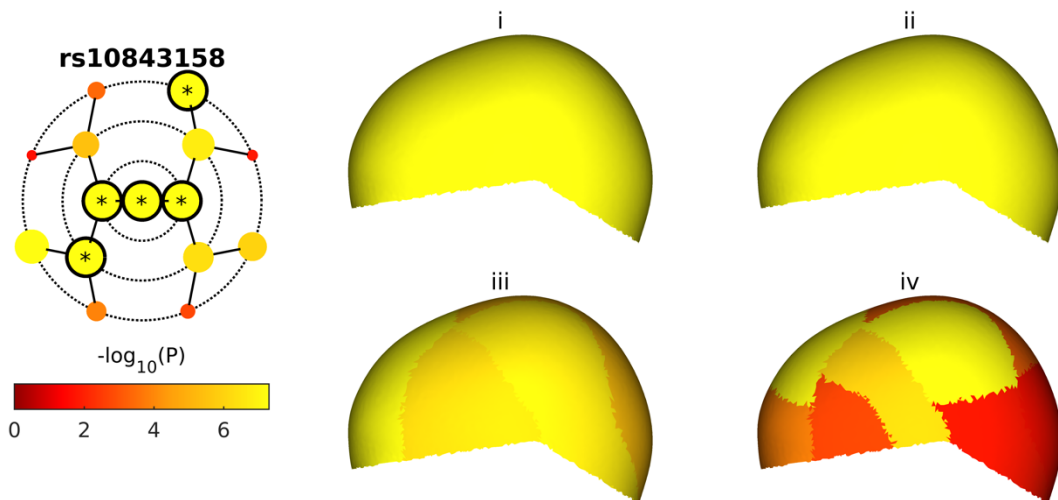
rs10843158

A

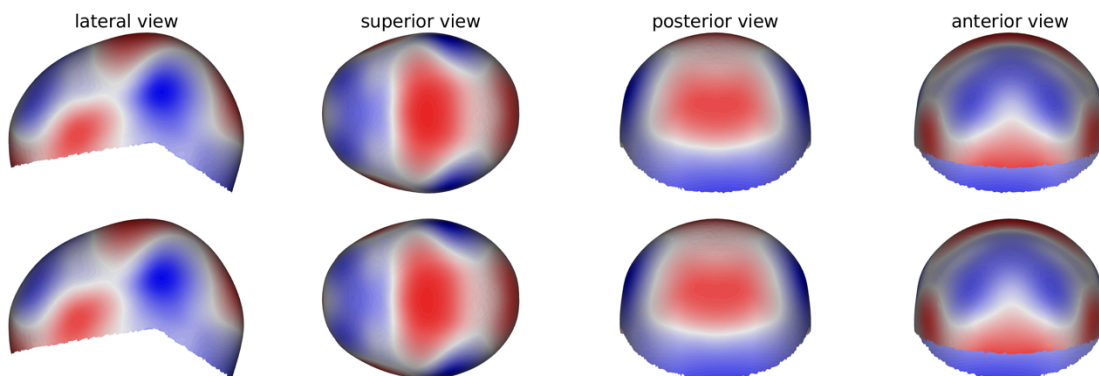
CV1



B



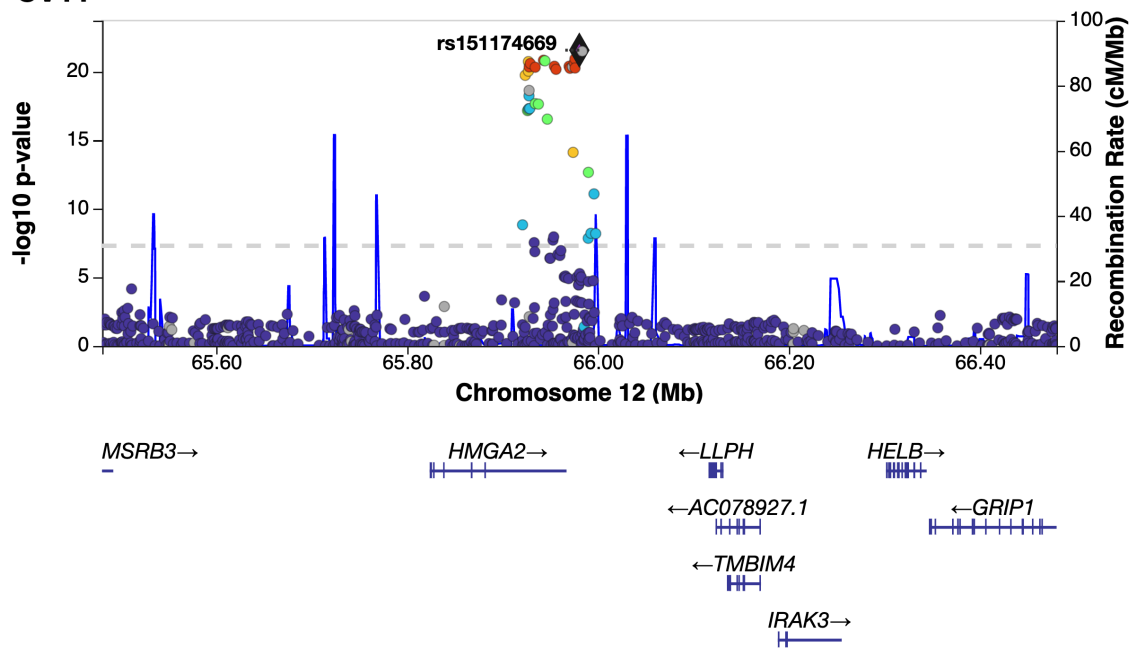
C



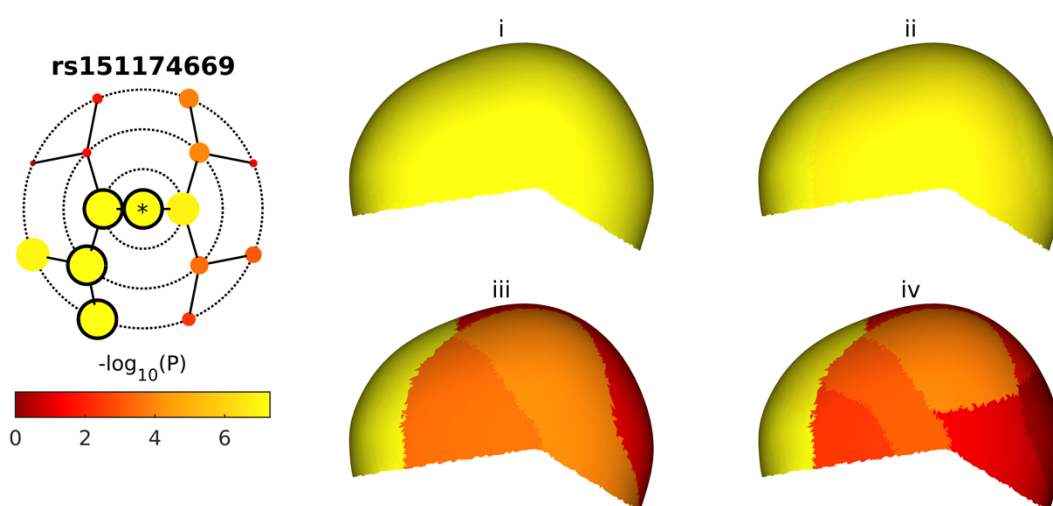
rs151174669

A

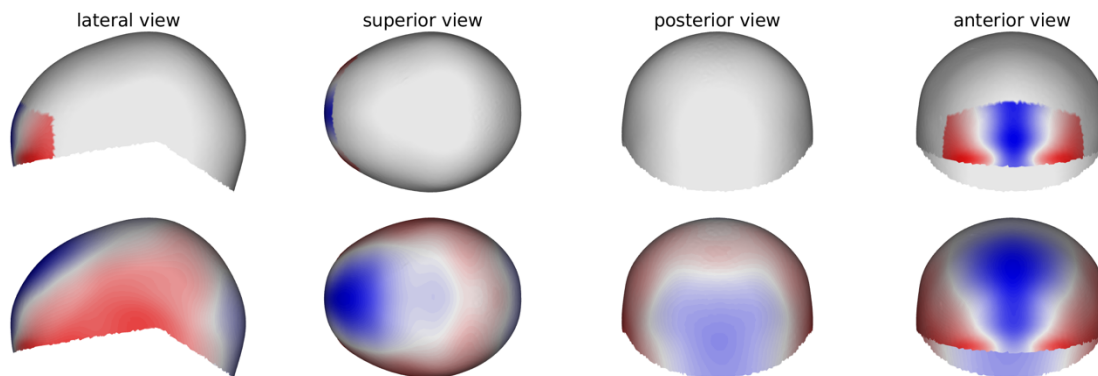
CV11



B



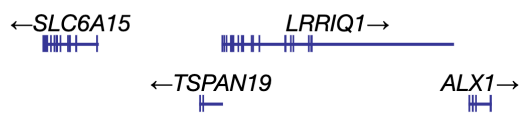
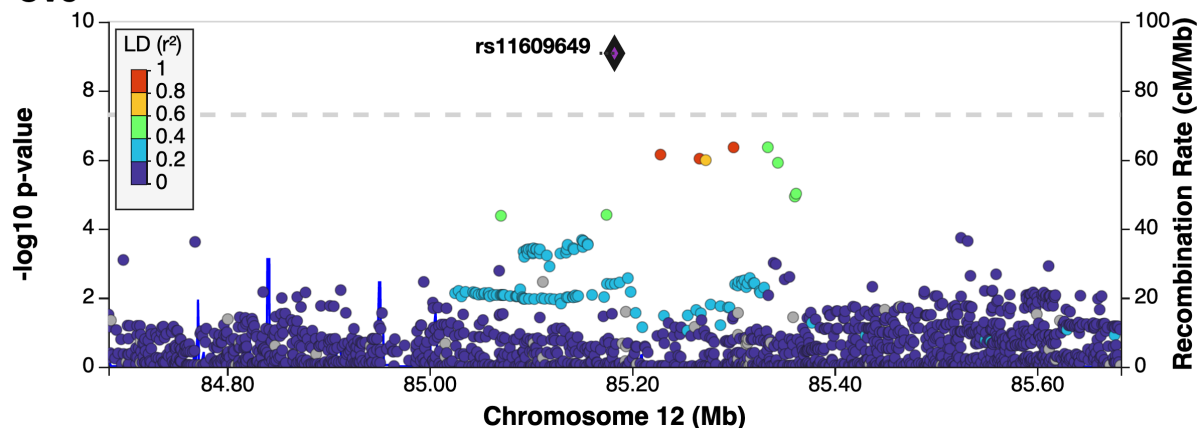
C



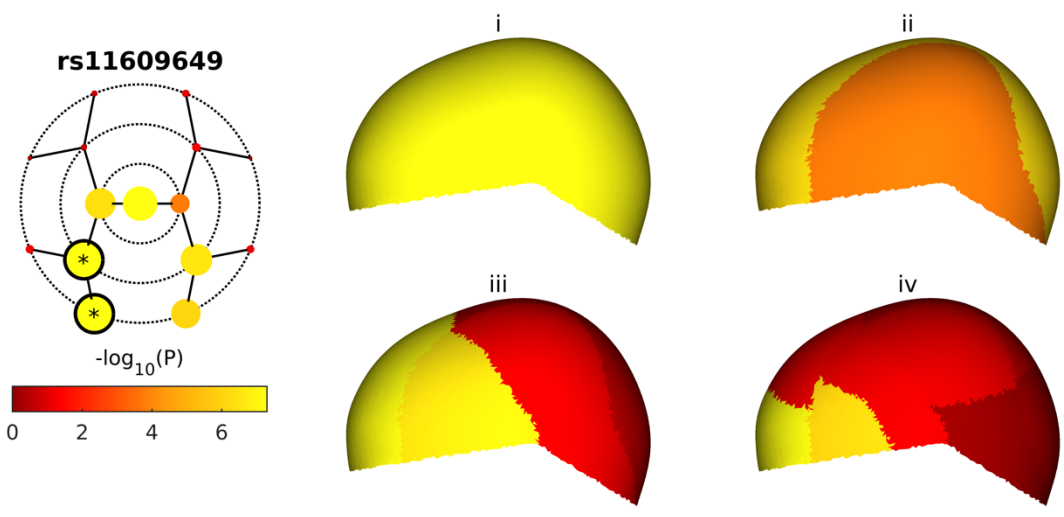
rs11609649

A

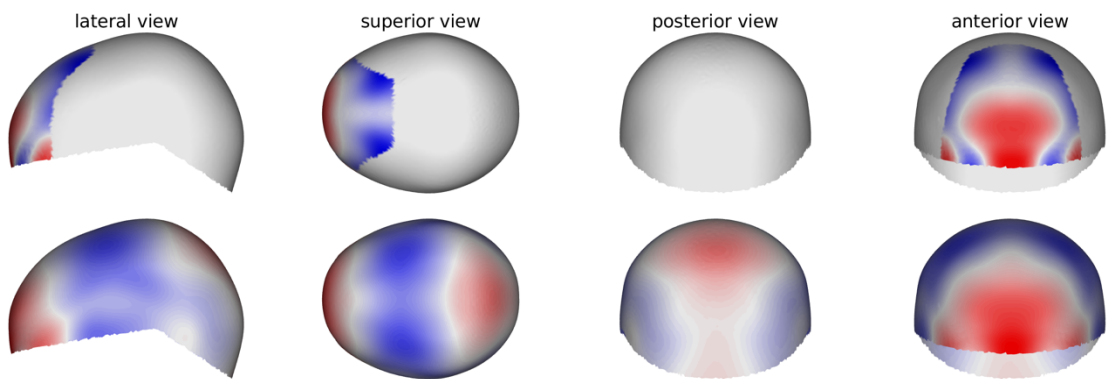
CV5



B



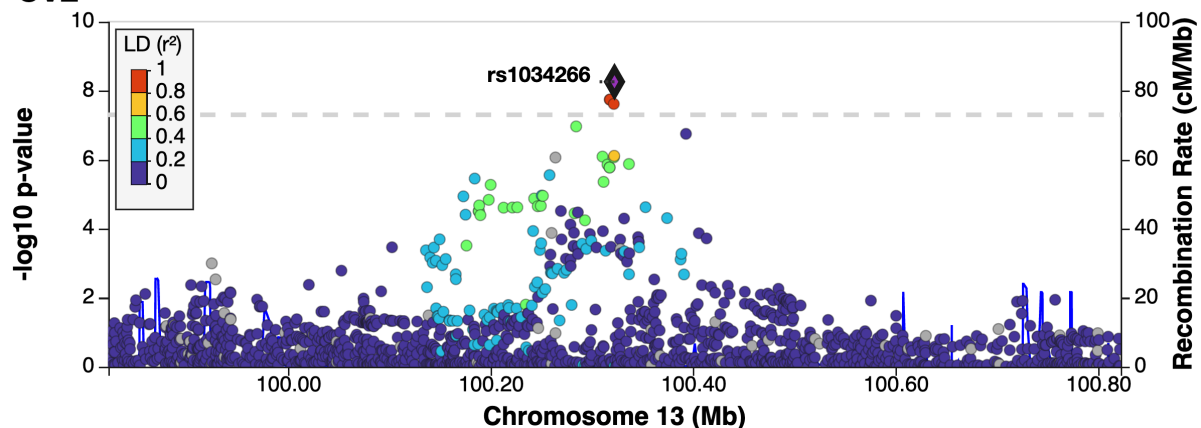
C



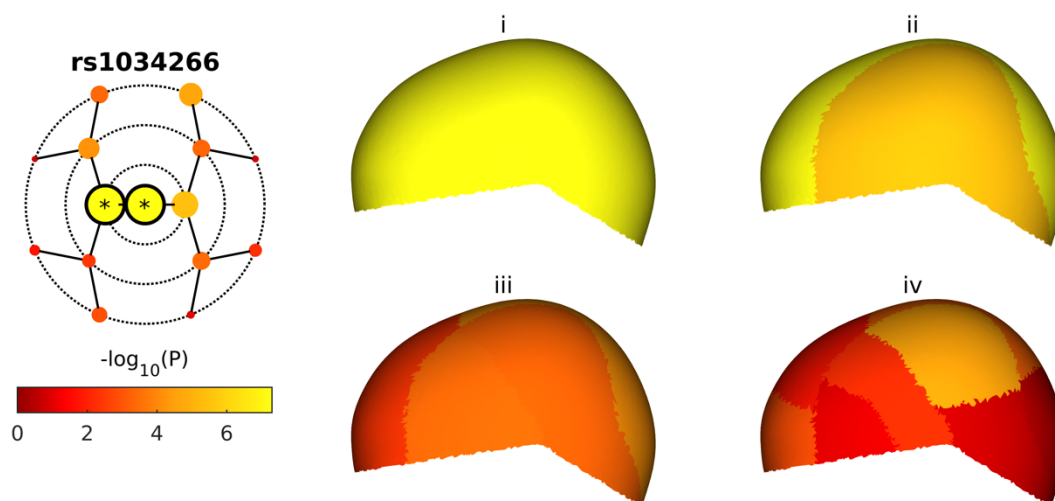
rs1034266

A

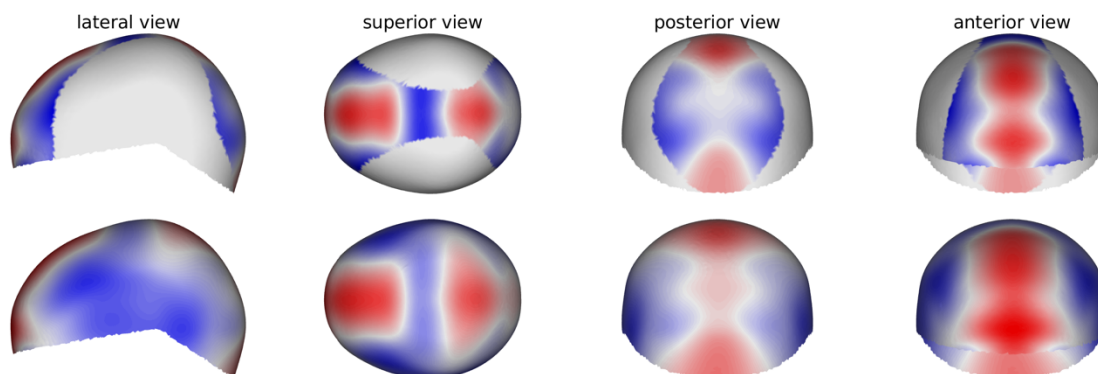
CV2



B



C

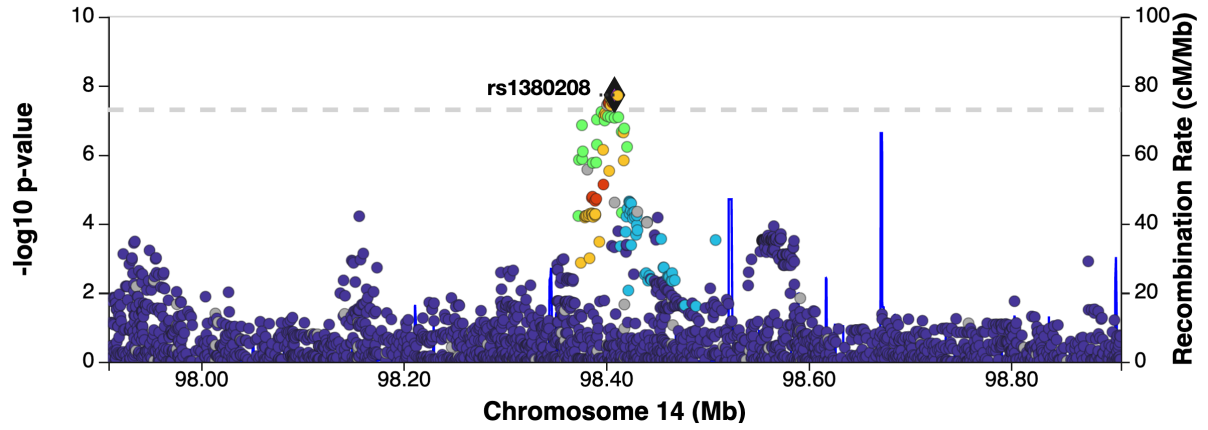


See page 2 for captions

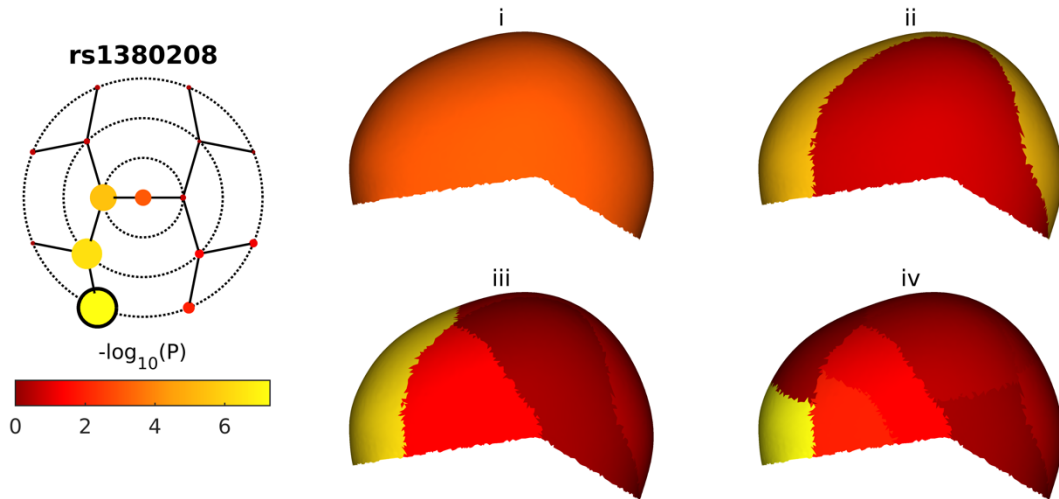
rs1380208

A

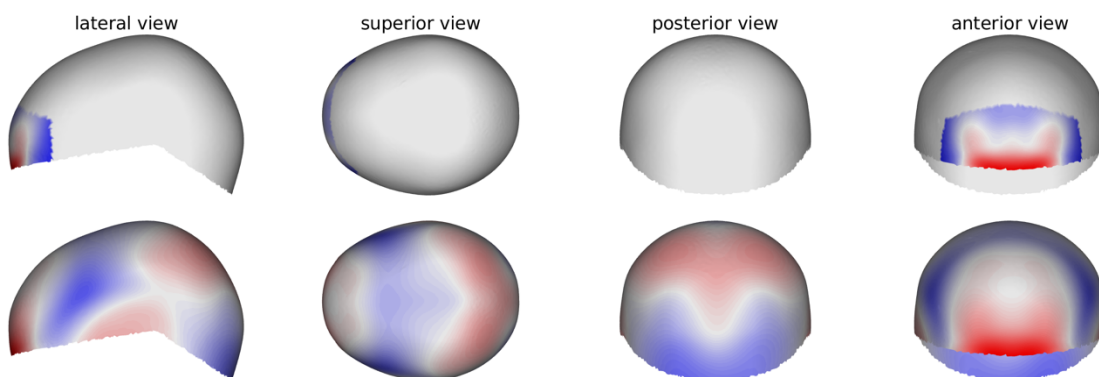
CV11



B



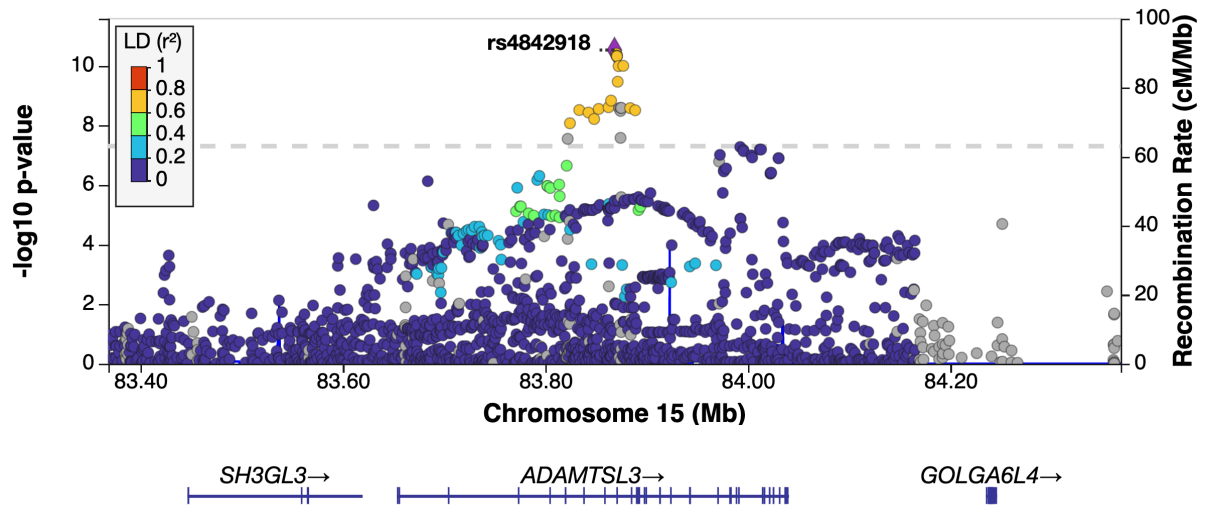
C



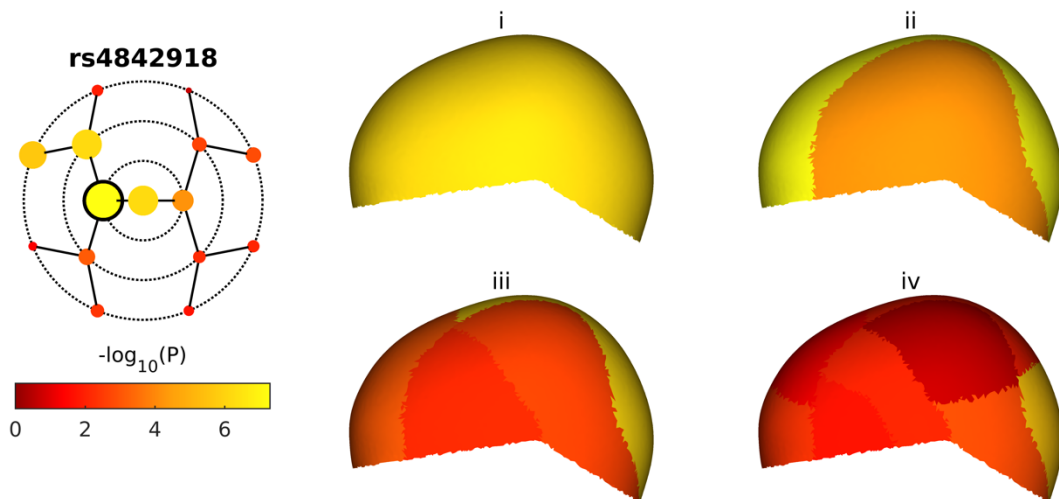
rs4842918

A

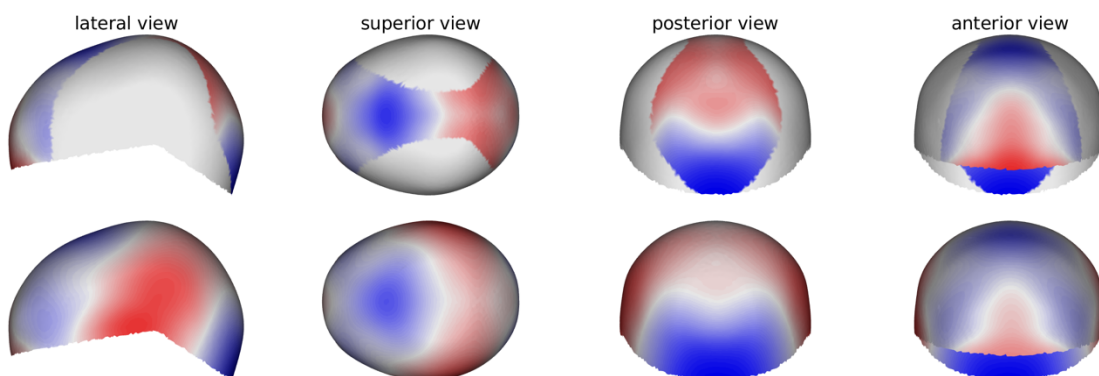
CV2



B



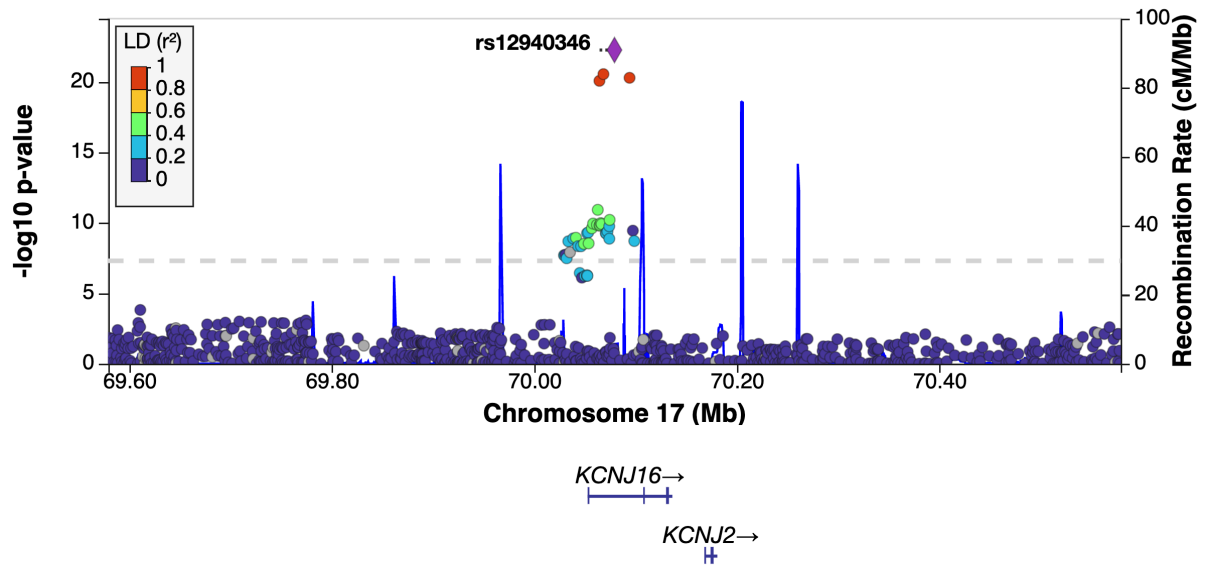
C



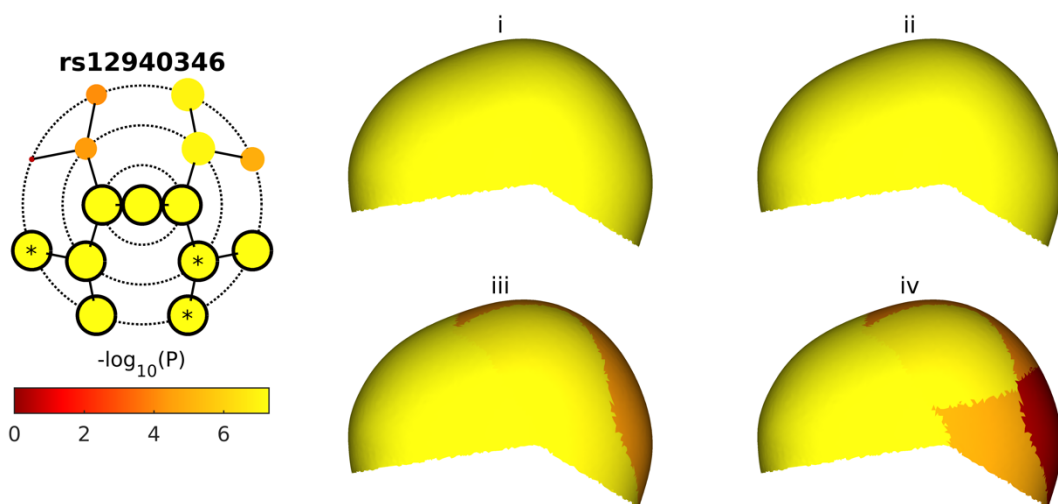
rs12940346

A

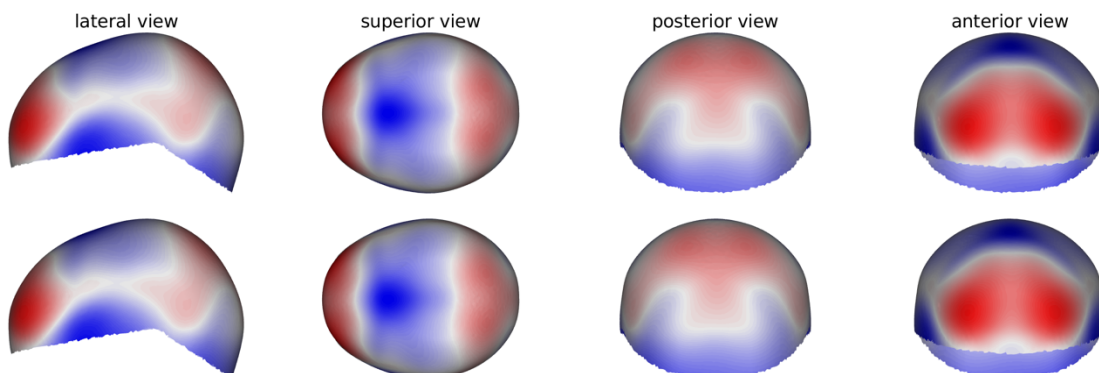
CV1



B



C

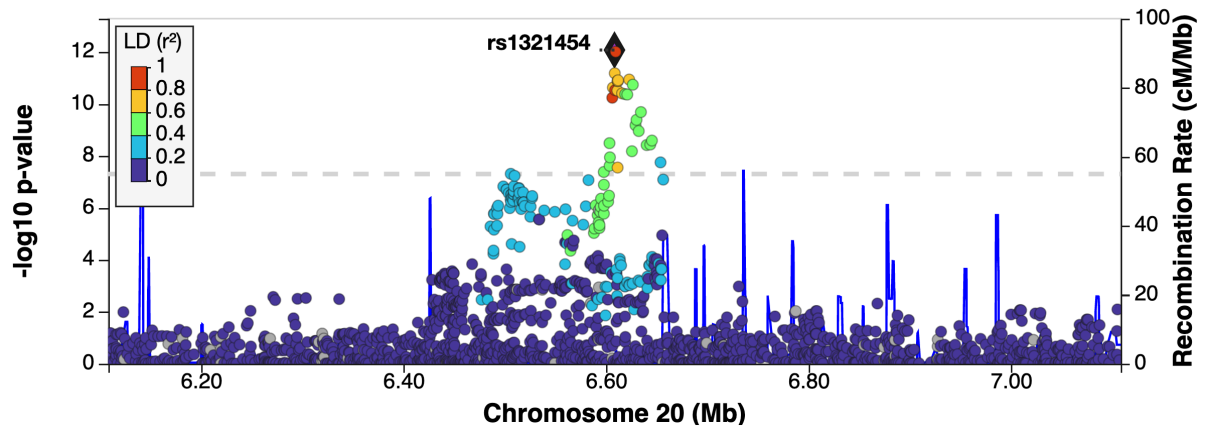


See page 2 for captions

rs1321454

A

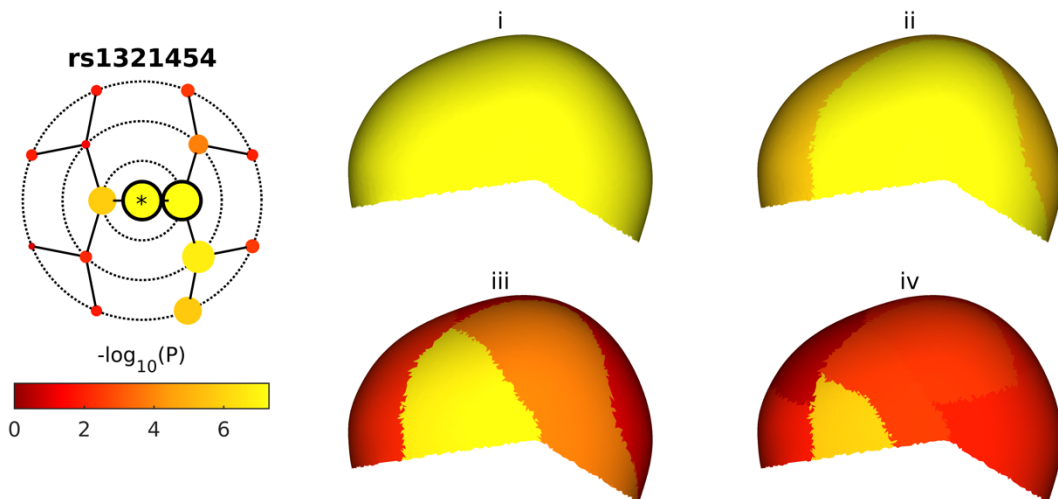
CV3



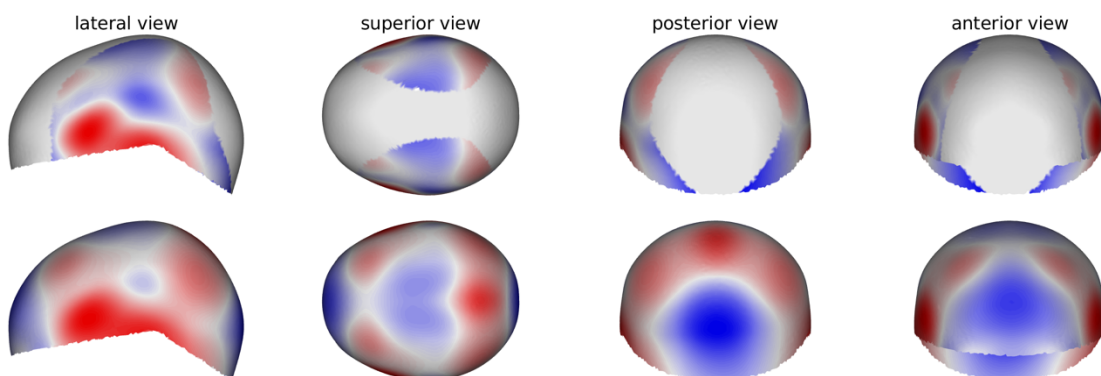
←*FERMT1*

BMP2→

B



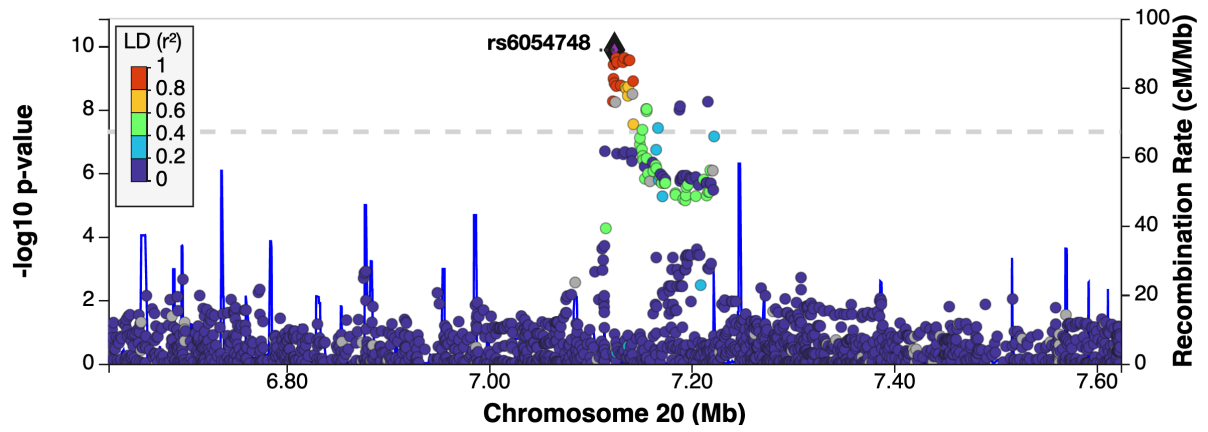
C



rs6054748

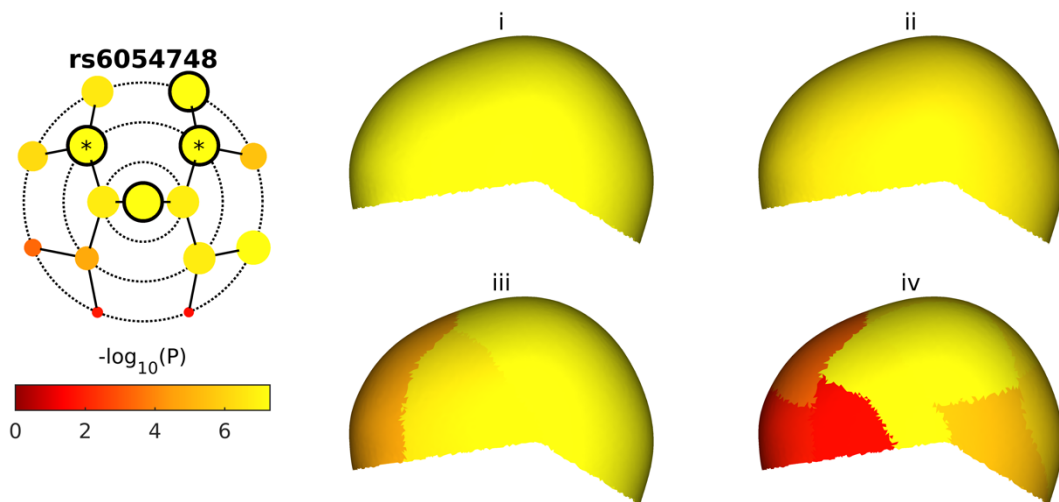
A

CV4



BMP2→
H

B



C

