

Figure S1. Expression of galectin-3 in GC cells. Galectin-3 expression in GC cell lines. High expression of galectin-3 is observed in GC cells. NUGC-3 and YTN16 cells show higher expression levels than MKN74 cells. Stem cells are used as noncancer cell lines. MSC, mesenchymal stem cells.

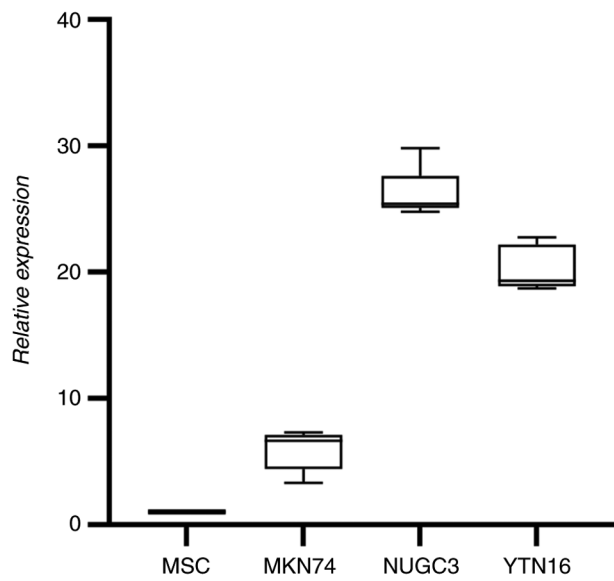


Figure S2. Inhibitory effect of JAQ1 on migratory ability of MKN74 GC cells. (A) Comparison of migrated cell numbers to the control in JAQ1 and (B) microscopic images of the migration assay with and without JAQ1. Migratory ability is regulated by JAQ1 (magnification, x100). mPLT, mouse platelet; control, rat IgG antibody.

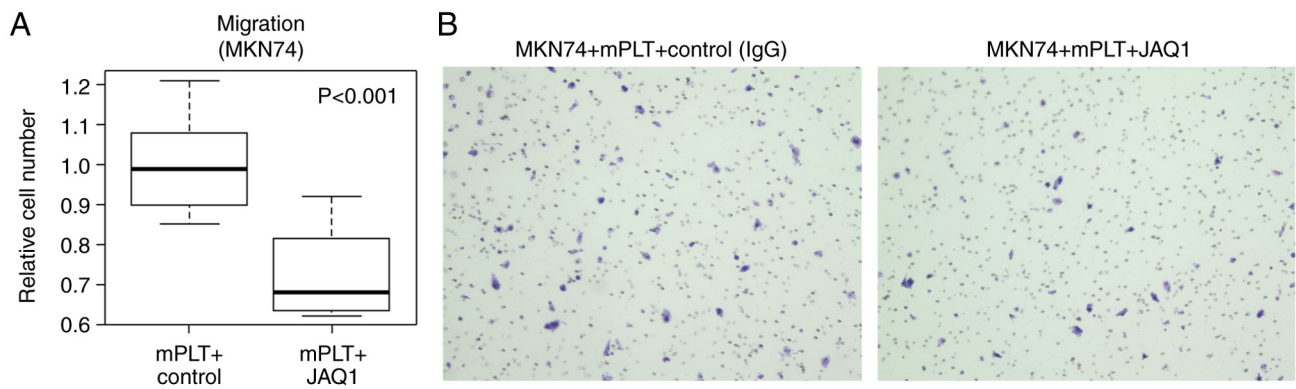


Figure S3. Image of the adhesion between GC cells and platelets. (A) A comparison of adhesion between the control and JAQ1. Images of platelets adhering to NUGC-3 cells in the control group. (B) The adhesion of platelets to NUGC-3 cells is reduced by using JAQ1. Red and white staining represent GC cells and platelets, respectively. mPLT, mouse platelet; control, rat IgG antibody.

