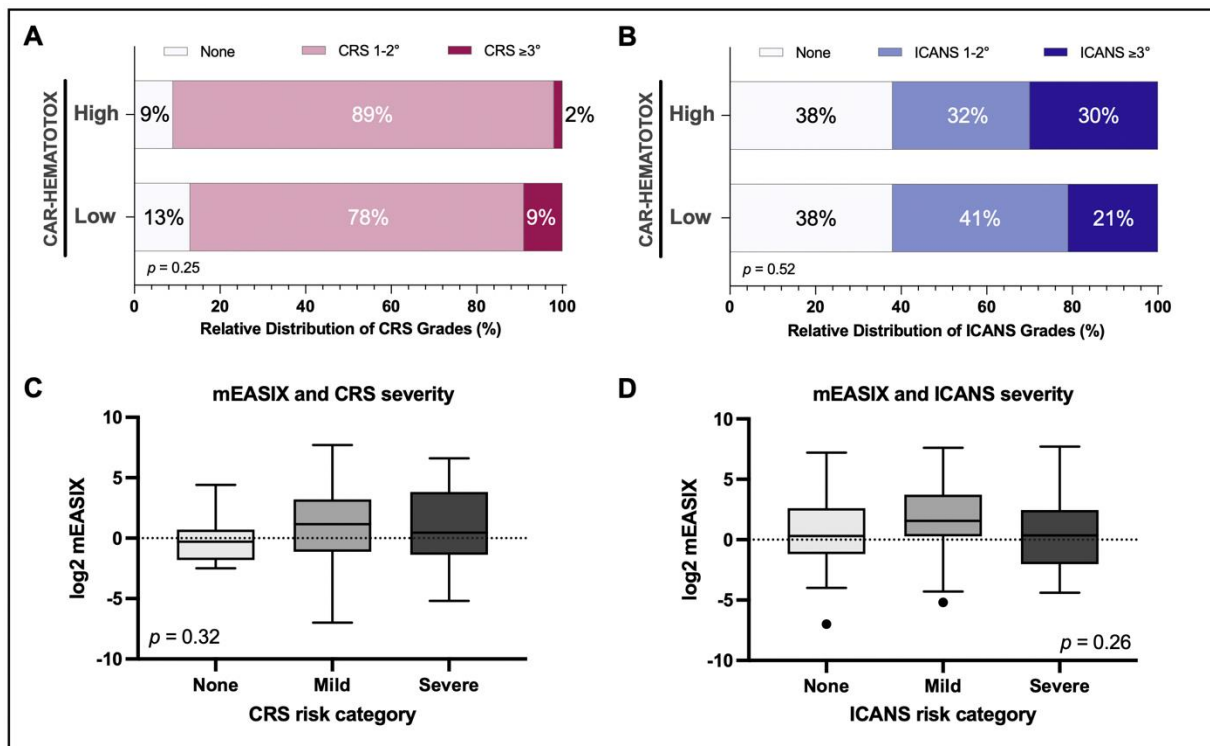


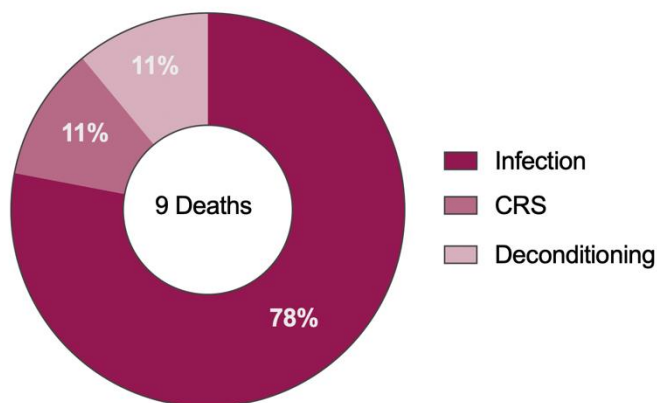
16
17

Supplementary Figures

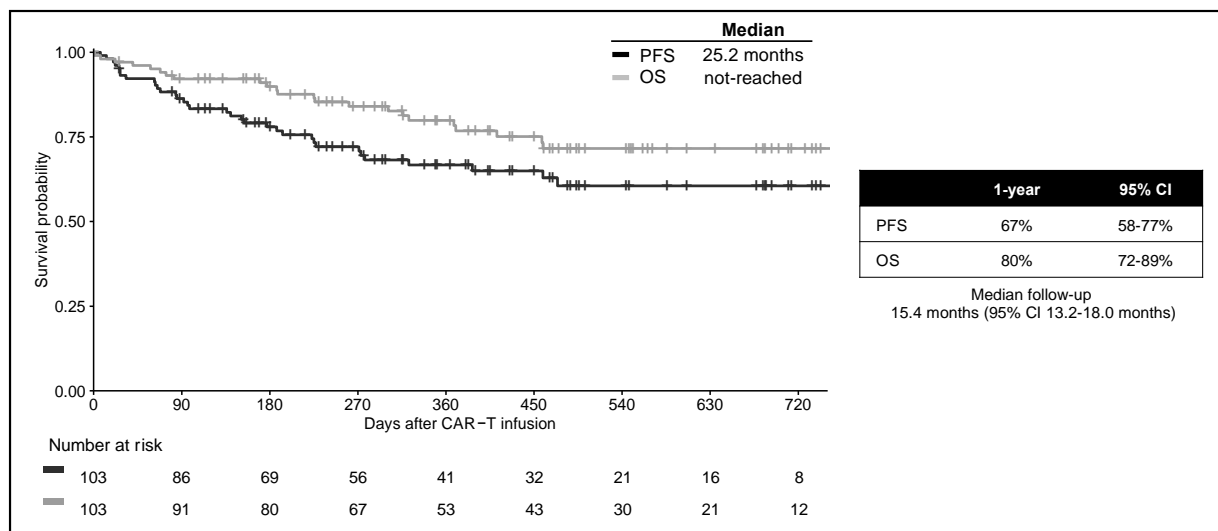


18 **Figure S1 Neither the CAR-HEMATOTOX score nor the modified EASIX score at**
 19 **lymphodepletion were associated with the severity of CRS or ICANS**
 20 **A-B** Relative distribution of CRS grades (A) and ICANS grades (B) according to ASTCT criteria by HT score.
 21 **C-D** Log 2 transformed modified EASIX score (Pennisi et al Blood Advances 2021) by CRS (C) and ICANS
 22 (D) risk category. Mild defined as ASTCT grade 1-2, severe defined as ASTCT grade ≥3. P-values determined
 23 by Kruskal-Wallis test.
 24
 25
 26
 27

Causes of Non-Relapse Mortality



28 **Figure S2 Non-relapse mortality after brexu-cel infusion is driven by severe infections**
 29 **Nine patients died of non-relapse mortality (NRM) related reasons during the entire study follow-up.**
 30 **Pie chart depicts the distribution underlying causes of death.**
 31



32 **Figure S3 Survival outcomes in r/r MCL patients treated with brexu-cel**
 33 Kaplan-Meier estimates of progression-free survival (PFS, dark grey) and overall survival (OS, light grey).
 34 Median PFS/OS and 1-year PFS/OS rate with 95% confidence intervals (Cis) are provided.
 35