

Supplemental information

**Derived myeloid lineage induced pluripotent
stem as a platform to study human C-C
chemokine receptor type 5 Δ 32 homozygotes**

Guibin Chen, Francesca Calcaterra, Yuchi Ma, Xianfeng Ping, Elena Pontarini, Dan Yang, Ferdinando Oriolo, Zhen Yu, Assunta Cancellara, Joanna Mikulak, Yuting Huang, Silvia Della Bella, Yangtengyu Liu, Leslie G. Biesecker, Rebecca L. Harper, Clifton L. Dalgard, Manfred Boehm, and Domenico Mavilio

Figure S1

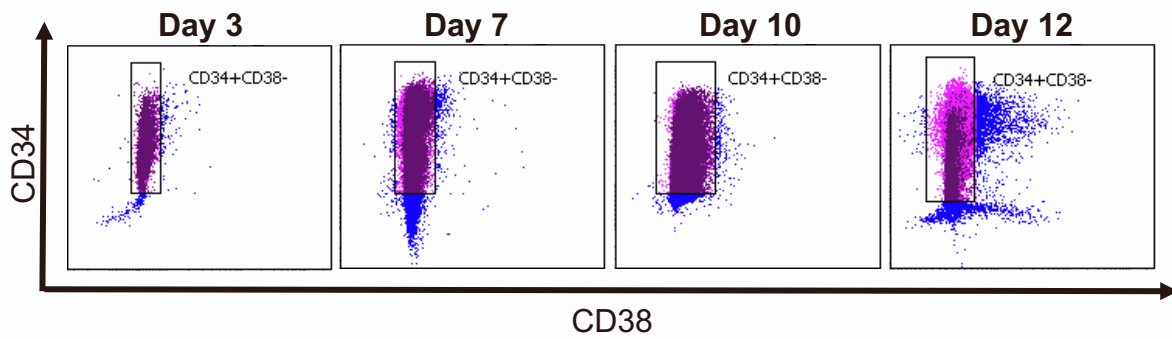


Figure S1. Assessment of CD38 and CD34 expression during iPSCs towards iHSPCs differentiation, related to Figure 2. Representative graphs showing that the majority of CD34⁺ cells hold a CD38⁻ phenotype at different time points during the iPSC differentiation process towards iHSPCs.

Figure S2

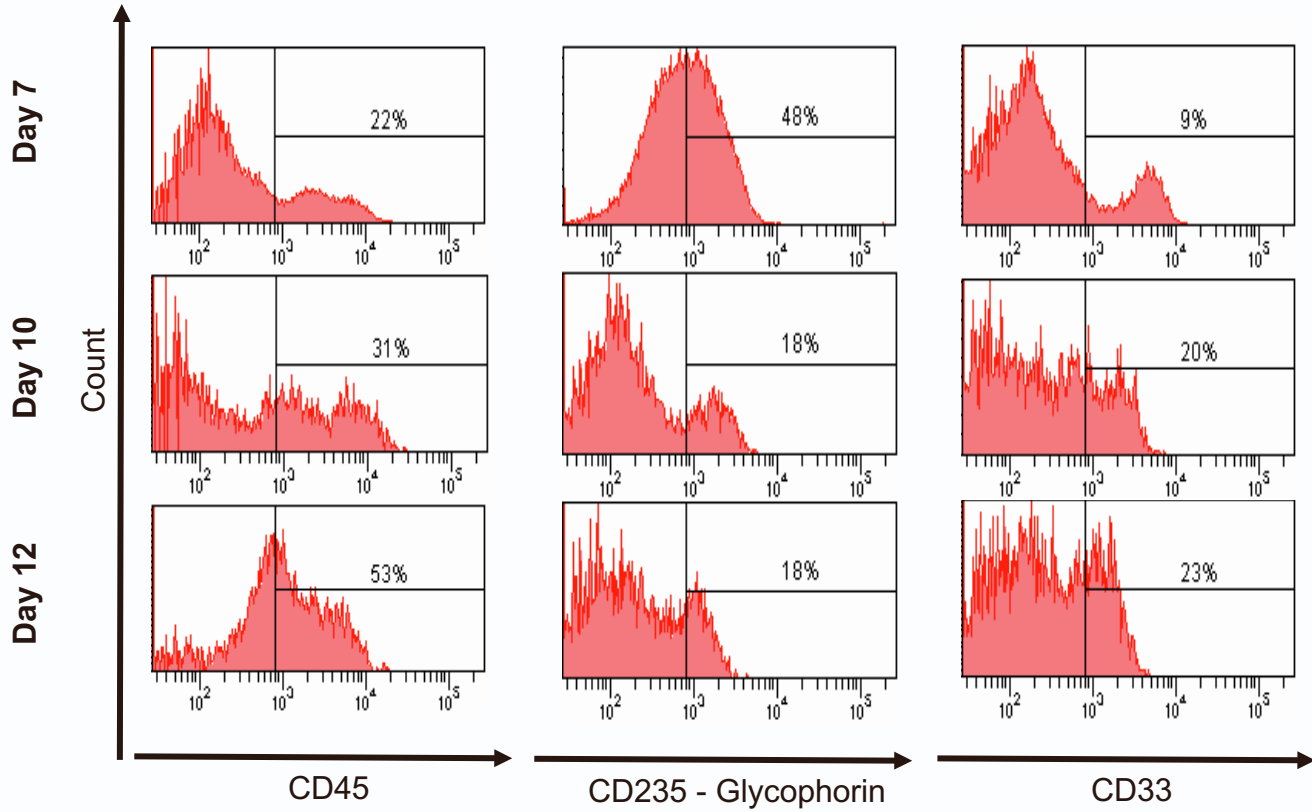
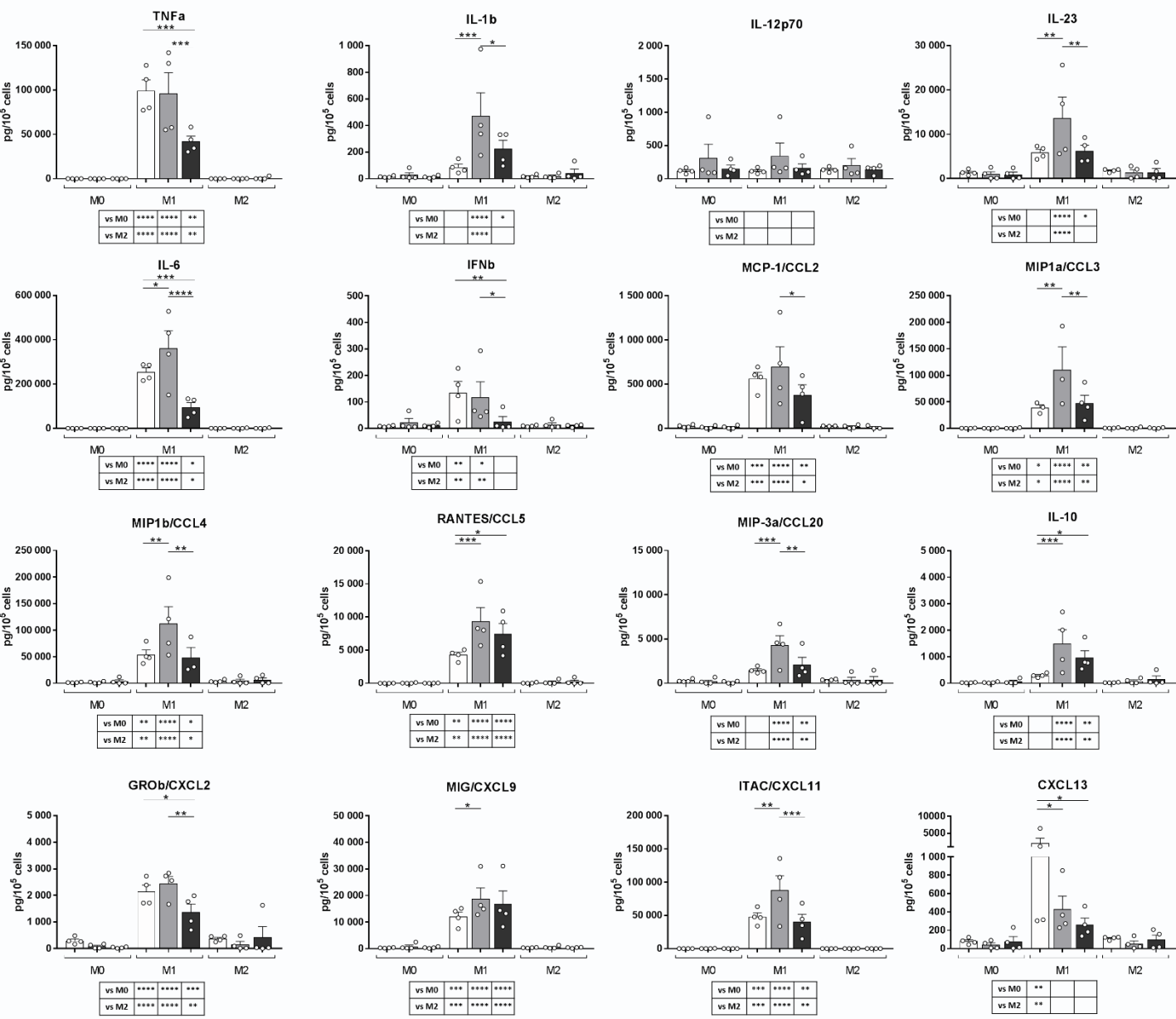


Figure S2. Phenotype analysis of cells during Colony-Forming Unit (CFU) assay, related to Figure 2. Representative graphs showing the expression levels of the pan-hematopoietic marker CD45 (left column), the erythroid marker glycophorin (CD235, middle column), and the myeloid marker CD33 (right column) on cells analyzed at different time points during CFU assay.

Figure S3

A



B

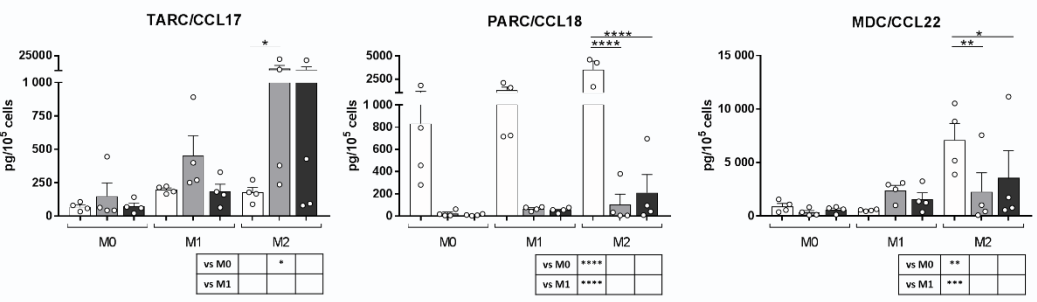


Figure S3. Primary and iPSC-derived macrophage secretome profile, related to Figure 6. Expression levels of M1 polarization markers (A) and M2 polarization markers (B) were analyzed in primary (white bar) and iPSC-derived M0, M1, and M2 macrophages obtained from both controls (light gray bar) and CCR5Δ32 variant (dark gray bar). Data are expressed as pg/10⁵ cells and are presented as mean ± SEM. Statistical significance was calculated using ANOVA. *p < 0.05; **p < 0.01; *** p < 0.001; **** p < 0.0001.

Table S1

Primary		iPS-derived			
Normal		Normal		CCR5D32	
		iPS	iPS_ctrl_3		
			iPS_ctrl_4		
			iPS_ctrl_6		
pmono	pmono_ctrl_1	imono	imono_ctrl_1		
	pmono_ctrl_2		imono_ctrl_2		
	pmono_ctrl_7		imono_ctrl_5		
pM0	pM0_ctrl_1	iM0	iM0_ctrl_1	iM0_CCR5D32	iM0_CCR5_1
	pM0_ctrl_7		iM0_ctrl_2		iM0_CCR5_2
	pM0_ctrl_8		iM0_ctrl_3		iM0_CCR5_3
			iM0_ctrl_4		
	iM0_ctrl_5				
pM1	pM1_ctrl_1	iM1	iM1_ctrl_1	iM1_CCR5D32	iM1_CCR5_1
	pM1_ctrl_2		iM1_ctrl_2		iM1_CCR5_2
	pM1_ctrl_7		iM1_ctrl_3		iM1_CCR5_3
	pM1_ctrl_8		iM1_ctrl_4		
			iM1_ctrl_5		
pM2	pM2_ctrl_1	iM2	iM2_ctrl_1	iM2_CCR5D32	iM2_CCR5_1
	pM2_ctrl_7		iM2_ctrl_2		iM2_CCR5_2
	pM2_ctrl_8		iM2_ctrl_3		iM2_CCR5_3
			iM2_ctrl_4		
			iM2_ctrl_5		

Table S1. List of samples used in RNA-seq analyses, related to Figure 4 and 5.

Table S2

Panel	Staining	Target	Fluorochrome	FACS Filters	Clone	Company	Catalog N°	Batch
iHSCs	Surface	CD34	PE	YG582/15	561	Biolegend	343606	B204487
	Surface	CD34	BV510	V510/20	581	Biolegend	343528	B311638
	Surface	CD45	APC	R670/14	H130	Biolegend	304012	B190802
	Surface	CD33	FITC	B530-30	HIM3-4	Biolegend	303304	B284834
	Surface	CD38	AF700	R730/45	HB-7	Biolegend	303516	B303849
	Surface	CD235	PE	YG582/15	HIR2	Biolegend	306604	B203766
Monocytes	Surface	CD14	FITC	B530/30	GCD14	Biolegend	325604	B211977
	Surface	CD16	APC	R670/14	3G8	Biolegend	302012	B212891
	Surface	CD11b	PE Cy5	B655-730	ICRF44	Biolegend	301308	B191268
Macrophage polarization	Surface	CD115	BV421	V450/50	9-4D2-1E4	BD	565347	5082979
	Surface	CD14	BV570	V575/26	M5E2	Biolegend	301831	B172009
	Surface	CD16	AF700	R730/45	3G8	Biolegend	302026	B181825
	Surface	CD209	PE	YG582/15	DCN46	BD	551265	2097966
	Surface	CD80	FITC	B530/30	L307-4	BD	557226	96060
M1 Macrophage phenotype	Surface	CD86	FITC	B530/30	2331	BD	555657	5606
	Surface	CD215	APC	R670/14	JM7A4	Biolegend	330209	163590
	Surface	HLA-DR	APC Cy7	R780/60	L243	BD	335831	4226954
	Surface	CD195 (CCR5)	PE	YG582/15	2D7/ CCR5	BD	555993	93581
	Surface	CCR7	PE CF594	YG610/20	150503	BD	562381	4085878
M2 macrophage phenotype	Surface	CD206	FITC	B530/30	19.2	BD	551135	87315
	Surface	CD163	PE	YG582/15	GHI/61	BD	556018	8289
	Surface	CD200R	APC	R670/14	OX-108	Biolegend	329307	B196410
	Surface	CD204	AF700	R730/45	351615	R&D	FAB2708N	F0114031

Table S2. FACS Antibody Information, related to Figures 2-3, and 6 and to Supplementary Figures S1 and S2.