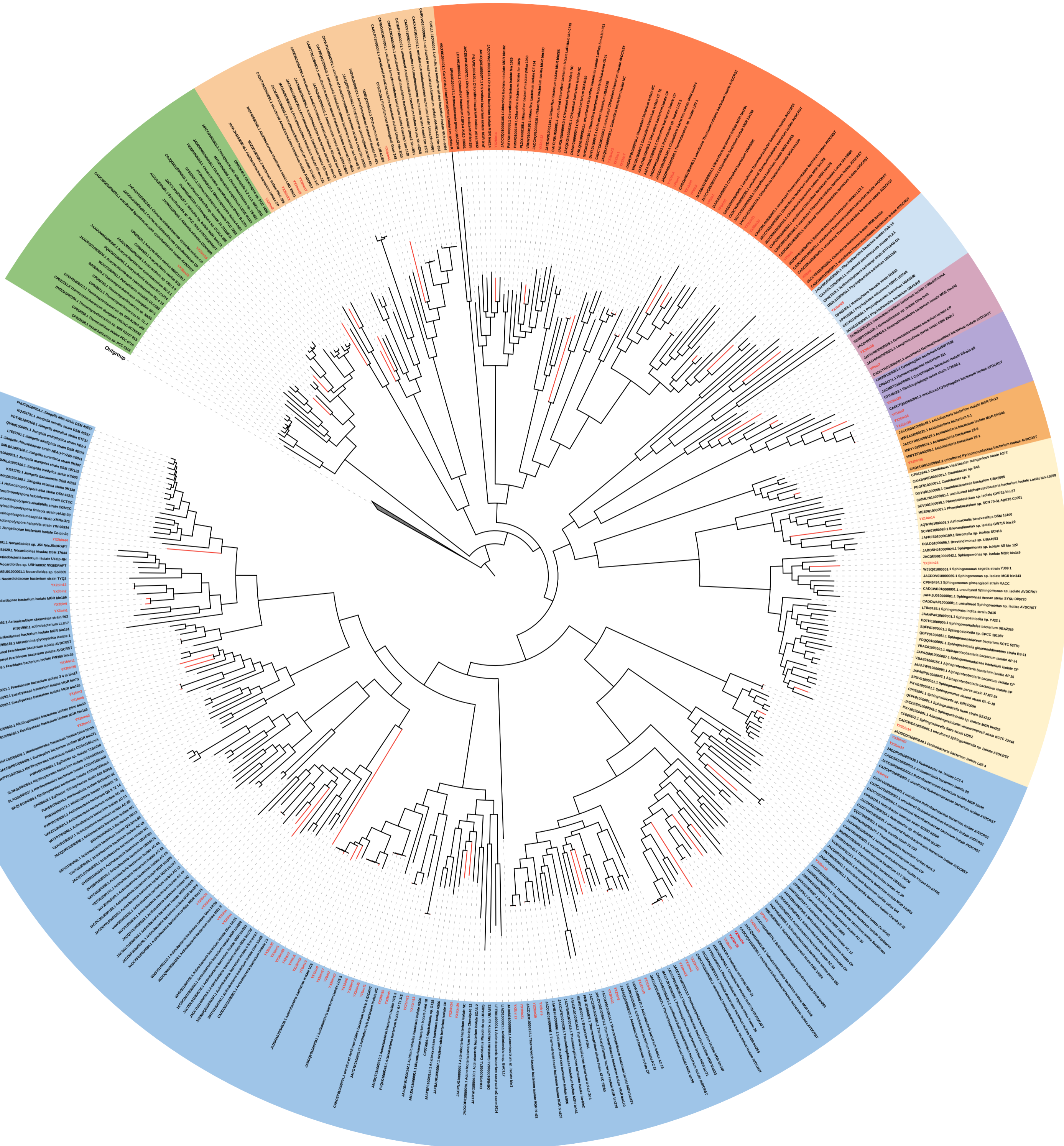


Tree scale: 0.1

- Phylum**
- Actinobacteriota
 - Proteobacteria
 - Acidobacteriota
 - Bacteroidota
 - Gemmatimonadota
 - Planctomycetota
 - Chloroflexota
 - Armatimonadota
 - Cyanobacteria



Phylogenetic tree showing relationships between various bacterial species. The tree is rooted at the center and branches outwards. The branches are color-coded according to the phylum legend. Numerous species names are listed along the outer edge of the tree, including strains like JAC001000001, JAC002000001, etc. Some branches are highlighted with red lines.

Phylogenetic tree showing relationships between various bacterial species. The tree is rooted at the center and branches outwards. The branches are color-coded according to the phylum legend. Numerous species names are listed along the outer edge of the tree, including strains like JAC001000001, JAC002000001, etc. Some branches are highlighted with red lines.

Phylogenetic tree showing relationships between various bacterial species. The tree is rooted at the center and branches outwards. The branches are color-coded according to the phylum legend. Numerous species names are listed along the outer edge of the tree, including strains like JAC001000001, JAC002000001, etc. Some branches are highlighted with red lines.