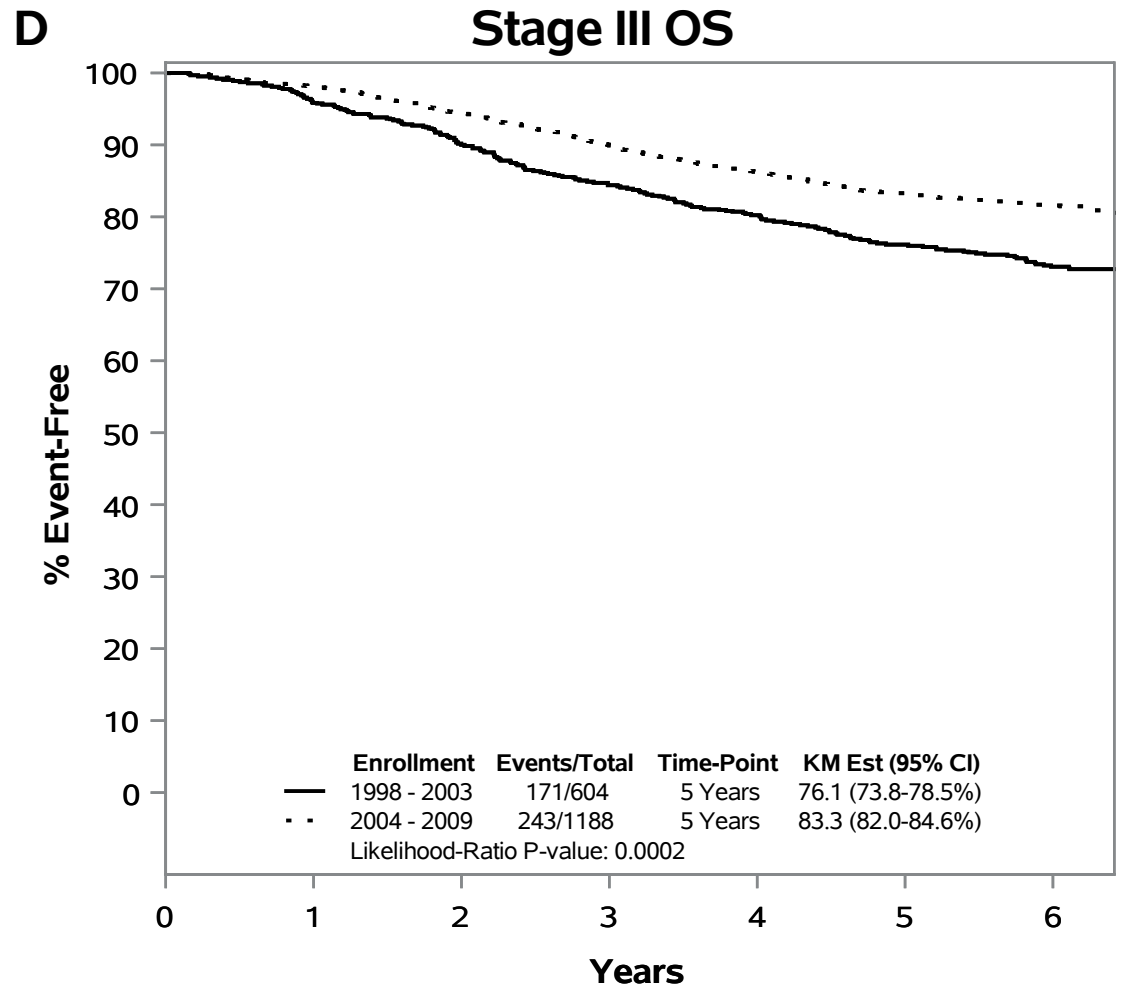
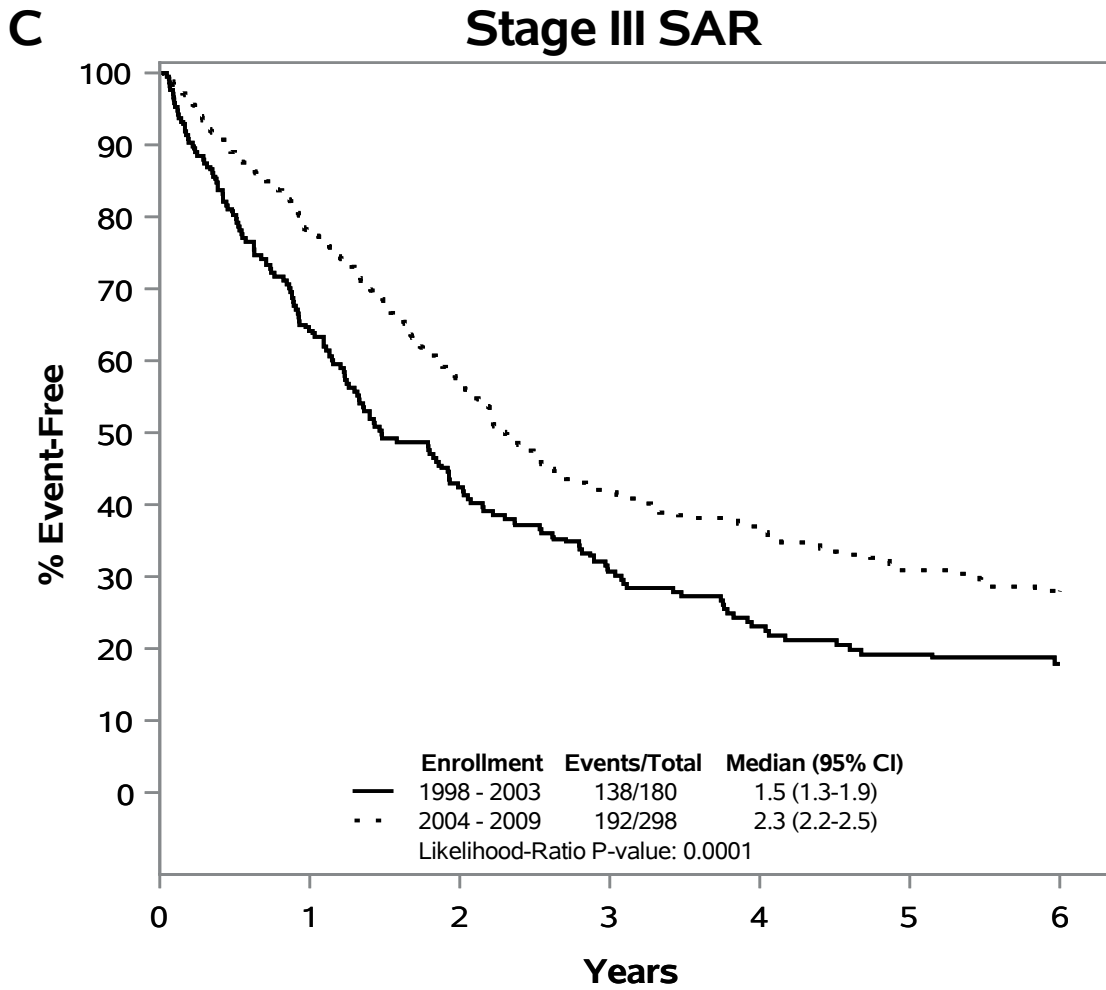


Patients-at-Risk

	0	1	2	3	4	5	6
1998 - 2003	604	536	471	434	416	392	372
2004 - 2009	1188	1060	929	861	807	716	635

Patients-at-Risk

	0	1	2	3	4	5	6
1998 - 2003	604	536	471	434	416	392	372
2004 - 2009	1188	1060	929	861	807	716	635



Patients-at-Risk

	0	1	2	3	4	5	6
1998 - 2003	180	115	74	54	37	25	20
2004 - 2009	298	225	155	108	84	64	42

Patients-at-Risk

	0	1	2	3	4	5	6
1998 - 2003	604	573	537	503	474	448	416
2004 - 2009	1188	1150	1093	1017	938	824	726