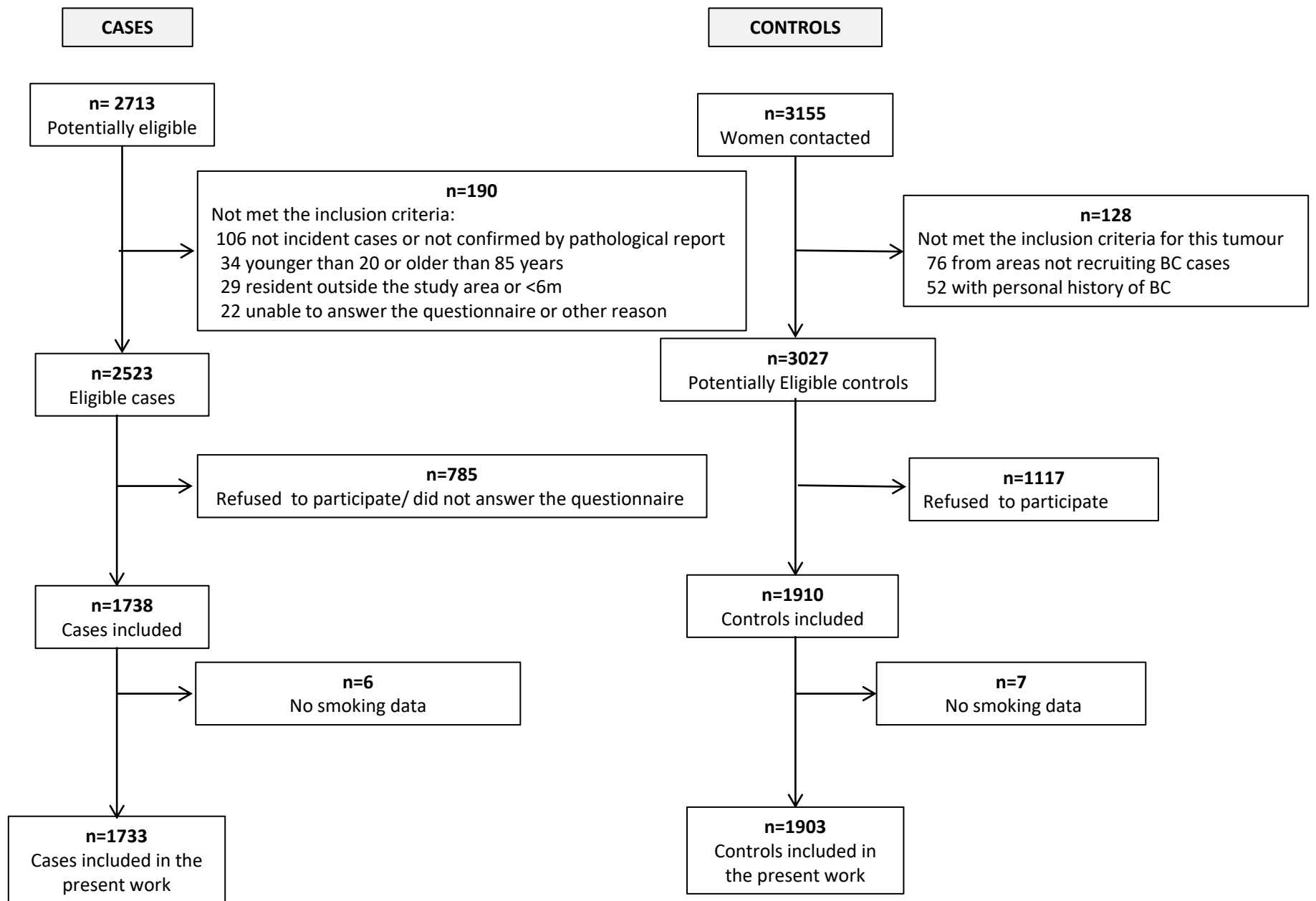


Supplementary Table S1 Association between cigarette smoking variables and breast cancer risk, overall and by menopausal status, additionally adjusted by diet-related variables. Multi case-control study (MCC-Spain), 1733 breast cancer cases + 1903 controls, 2008-2013, Spain.

Smoking variables	All Women (N = 3636; Cases = 1733; Controls = 1903)						Premenopausal Women (N = 1157; Cases = 610; Controls = 547)						Postmenopausal Women (N = 2474; Cases = 1122; Controls = 1352)						P-int ^f
	Ca	Co	OR ^b	95% CI	OR ^c	95% CI	Ca	Co	OR ^b	95% CI	OR ^d	95% CI	Ca	Co	OR ^b	95% CI	OR ^e	95% CI	
Smoking status (1 year before the interview)																			
Never smoker	972	1142	1.00		1.00		242	237	1.00		1.00		730	904	1.00		1.00		
Former smoker ≥10	170	180	1.12	0.88-1.41	1.02	0.77-1.36	61	53	1.16	0.76-1.77	1.46	0.87-2.46	109	126	1.01	0.76-1.35	0.81	0.54-1.22	
Former smoker <10	168	189	0.90	0.71-1.15	0.85	0.63-1.16	83	80	1.01	0.70-1.45	0.94	0.59-1.51	85	109	0.78	0.57-1.07	0.70	0.42-1.14	
Active smoker	413	390	1.03	0.87-1.24	1.04	0.82-1.32	219	175	1.19	0.91-1.57	1.29	0.88-1.88	193	213	0.87	0.68-1.11	0.81	0.56-1.17	
<i>p-trend</i>				0.892		0.940				0.259		0.294				0.162		0.162	0.214
Age at smoking initiation																			
Never smoker	972	1142	1.00		1.00		242	237	1.00		1.00		730	904	1.00		1.00		
≥18	367	369	1.09	0.91-1.30	1.01	0.80-1.27	140	101	1.33	0.97-1.83	1.49	0.98-2.26	227	267	0.93	0.75-1.16	0.73	0.53-1.01	
<18	389	389	0.97	0.81-1.17	0.98	0.77-1.24	227	209	1.05	0.80-1.37	1.11	0.77-1.58	161	178	0.85	0.65-1.11	0.92	0.62-1.38	
<i>p-trend</i>				0.955		0.886				0.686		0.576				0.219		0.362	0.036
Duration of tobacco use (years)																			
Never smoker	972	1142	1.00		1.00		242	237	1.00		1.00		730	904	1.00		1.00		
≤20	247	229	1.08	0.87-1.34	1.07	0.82-1.41	151	130	1.17	0.87-1.59	1.39	0.93-2.08	96	98	1.05	0.76-1.44	0.85	0.54-1.34	
20-30	249	228	1.07	0.86-1.32	1.02	0.78-1.34	150	138	1.01	0.75-1.37	0.95	0.63-1.43	99	89	1.09	0.78-1.51	1.01	0.62-1.62	
>30	251	299	0.96	0.79-1.16	0.89	0.69-1.16	61	40	1.45	0.91-2.30	1.60	0.89-2.87	189	258	0.77	0.61-0.97	0.69	0.48-0.98	
<i>p-trend</i>				0.863		0.504				0.284		0.353				0.052		0.058	0.012
Intensity (no. of cigarettes per day)																			
Never smoker	972	1142	1.00		1.00		242	237	1.00		1.00		730	904	1.00		1.00		
<15	356	363	1.00	0.84-1.20	0.98	0.78-1.23	180	153	1.13	0.85-1.51	1.26	0.87-1.82	175	209	0.85	0.67-1.09	0.70	0.49-1.01	
≥15	384	371	1.09	0.91-1.30	1.04	0.82-1.31	180	149	1.18	0.88-1.58	1.25	0.84-1.88	204	220	0.97	0.77-1.23	0.90	0.63-1.30	
<i>p-trend</i>				0.378		0.815				0.244		0.232				0.655		0.375	0.105
Cumulative exposure (pack-years)																			
Never smoker	972	1142	1.00		1.00		242	237	1.00		1.00		730	904	1.00		1.00		
<10	254	256	0.98	0.80-1.21	1.01	0.78-1.31	140	127	1.08	0.79-1.47	1.35	0.91-1.99	113	128	0.89	0.66-1.19	0.73	0.48-1.12	
10-25	228	240	0.97	0.78-1.20	0.86	0.66-1.14	133	105	1.23	0.90-1.69	1.11	0.72-1.71	95	134	0.74	0.55-1.00	0.61	0.39-0.96	
>25	247	234	1.16	0.94-1.42	1.12	0.85-1.47	82	68	1.15	0.78-1.68	1.23	0.73-2.07	165	165	1.05	0.81-1.36	1.03	0.70-1.52	
<i>p-trend</i>				0.297		0.816				0.248		0.427				0.733		0.548	0.131
Years smoking before first birth^a																			
Never smoker	801	939	1.00		1.00		177	162	1.00		1.00		624	776	1.00		1.00		
<10	255	253	0.99	0.80-1.23	0.96	0.72-1.27	118	87	1.18	0.82-1.70	1.22	0.73-2.03	137	165	0.85	0.64-1.12	0.73	0.48-1.12	
≥10	253	260	0.97	0.78-1.21	0.97	0.73-1.30	148	132	1.06	0.77-1.47	1.08	0.68-1.71	105	127	0.87	0.63-1.19	0.97	0.60-1.56	
<i>p-trend</i>				0.789		0.805				0.686		0.674				0.267		0.580	0.255
Cigarettes per day before first birth^a																			
Never smoker	801	939	1.00		1.00		177	162	1.00		1.00		624	776	1.00		1.00		
<15	211	226	0.92	0.73-1.16	0.93	0.70-1.25	117	95	1.09	0.77-1.56	1.22	0.76-1.95	94	130	0.77	0.56-1.05	0.68	0.43-1.07	
≥15	206	212	0.98	0.78-1.24	0.97	0.71-1.31	106	88	1.15	0.80-1.66	1.05	0.62-1.78	100	123	0.86	0.63-1.18	0.99	0.61-1.59	
<i>p-trend</i>				0.775		0.759				0.441		0.759				0.208		0.604	0.199

[j] OR: odds ratio. Multivariable logistic regression analyses were used to test whether each tobacco variable was associated with breast cancer risk. The p-trend values were calculated by incorporating the categorised variable as a continuous variable in the multivariable models. The p-value of the interaction term between menopausal status and the corresponding variable was calculated using the likelihood ratio test. ^a Only parous women. ^b OR and 95% CI adjusted for age, study level and region. ^c OR and 95% CI adjusted for age, study level, region, BMI, age at first birth, number of children, previous biopsies, family history of breast cancer, menopausal status, alcohol use, dietary pattern, daily caloric intake and antioxidant activity. ^d OR and 95% CI adjusted for age, study level, region, age at first birth, number of children, previous biopsies, family history of breast cancer, hormonal contraceptive use, alcohol use, dietary pattern, daily caloric intake and antioxidant activity. ^e OR and 95% CI adjusted for age, study level, region, BMI, age at first birth, number of children, previous biopsies, family history of breast cancer, history of hormone replacement therapy, age at menopause, alcohol use, dietary pattern, daily caloric intake and antioxidant activity. ^f P-int.: P value of the interaction term.



Supplementary Fig. 1 Flowchart of response and selection of participants. Multi case-control study (MCC-Spain), 2008-2013, Spain.

© 2023 Peñalver-Argüeso B. et al.