

S3 Appendix: Air CH₄ concentrations over time during air flushing phase

Figure 4A shows air CH₄ concentrations over time during RCM flushing (flushing data unavailable for experiment location R3 - an attic space - because the GasScouter was in use in the basement of the same home). Figure 4B shows air concentrations over time during the bag method flushing. RCM flushing used more fans with higher volume air flow compared to the bag method which shows more high frequency air CH₄ concentrations variations. However, both methods were able to achieve a flushed steady state air CH₄ concentration in the room chamber. Dashed lines in figures 4A and 4B indicate smoothed fits to highlight overall trends.

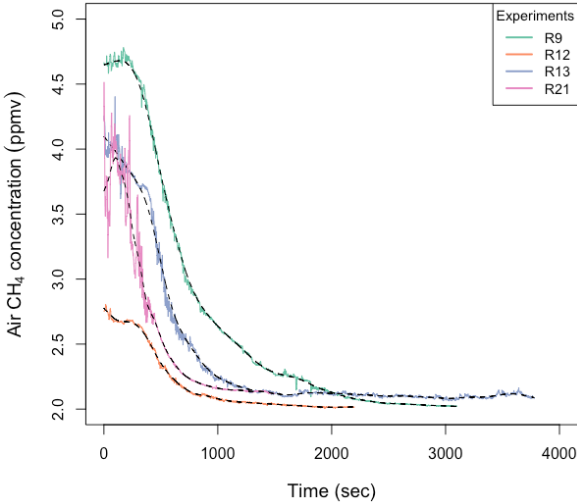


Figure 4A. Air CH₄ concentrations during room chamber method (RCM) flushing

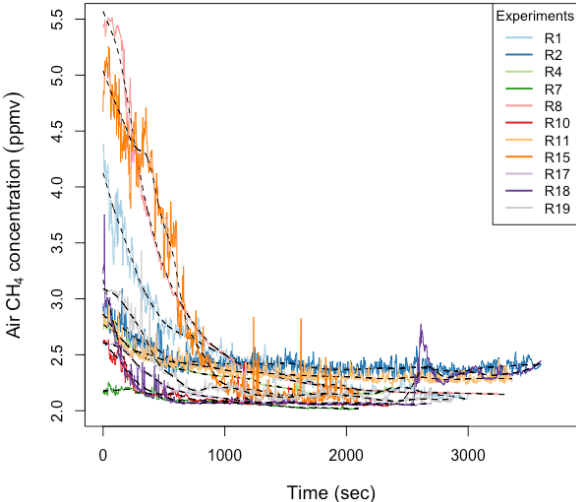


Figure 4B. Air CH₄ concentrations during bag method flushing