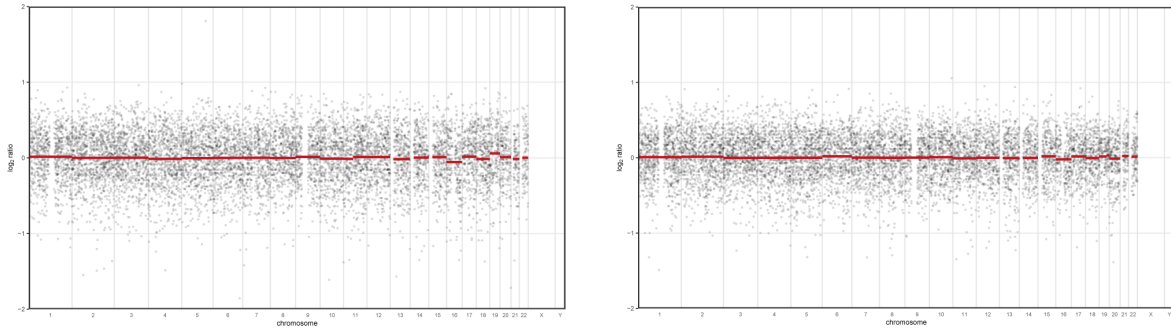
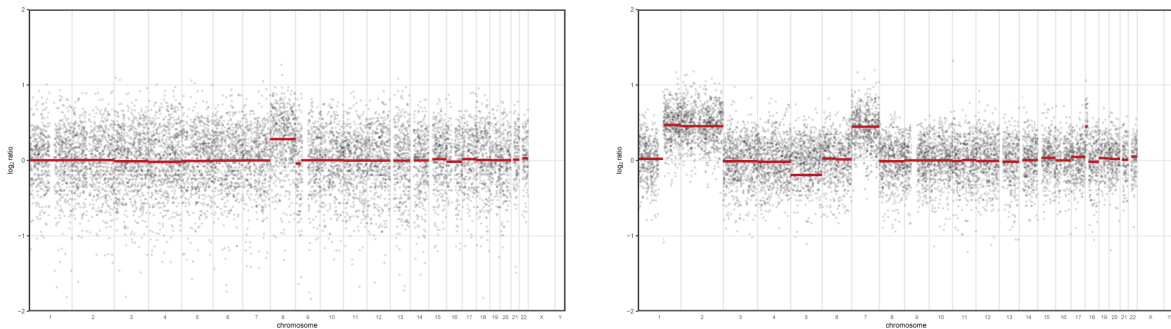


## Supplementary Figure S1. Representative relative copy number plots

- I. Two examples of cases without any copy number alterations. On the left, a NSMP low-grade EEC control that passed the quality check. On the right, a case diagnosed as low-grade EEC by  $\geq 3$  pathologists with sufficient DNA quality but a *TP53* VAF of 16% and was, therefore, considered ineligible for reliable copy number assessment.



- II. Two NSMP EEC reference cases with  $< 5$  somatic copy number alterations. Note the presence of few copy number alterations with segments that cover the entire chromosome or whole chromosome arm.



- III. Two EC with  $> 10$  somatic copy number alterations. On the left, a case diagnosed as low-grade EEC by  $\geq 3$  pathologists. On the right, a p53abn serous EC reference case.

