

Figure S1

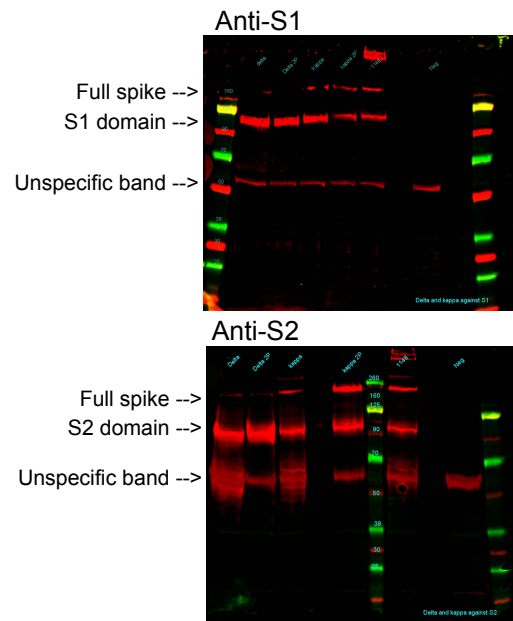


Figure S1: Raw images of Figure 1B. HEK293FT cells were transfected with mRNA expressing SARS-CoV-2 spike from indicated SARS-CoV-2 strains and evaluated by western blot 24 hours post-transfection using anti-RBD (upper panel) or anti-S2 domain antibodies (lower panel). Mock-transfected (PBS) cells served as a negative control. 2P = spike containing two stabilizing proline substitutions; 1148 = Wild-type (non-stabilized) SARS-CoV-2 Wuhan spike; Full spike, full length spike.