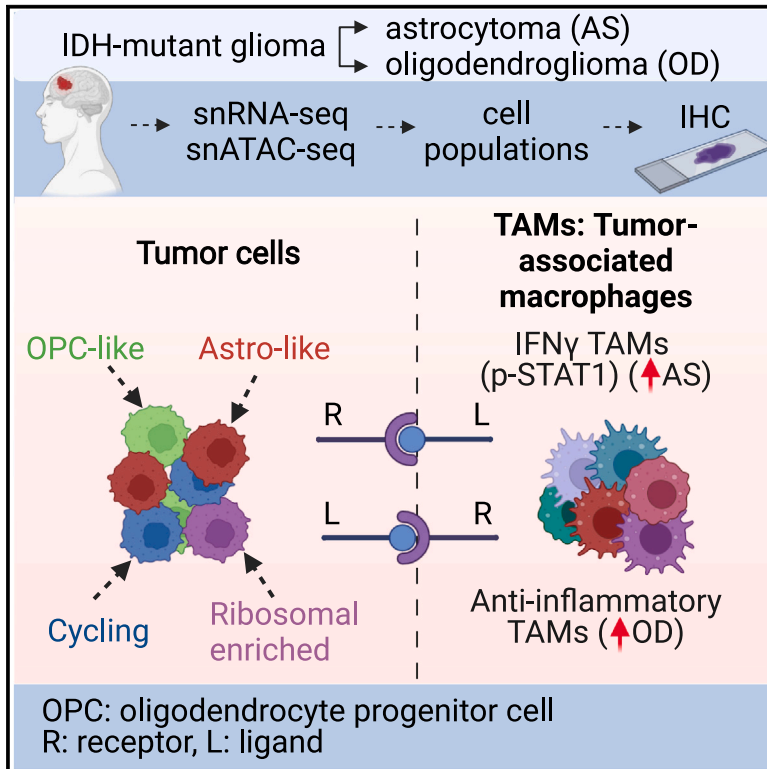


Tumor heterogeneity and tumor-microglia interactions in primary and recurrent IDH1-mutant gliomas

Graphical abstract



Authors

Enrique Blanco-Carmona,
Ashwin Narayanan,
Inmaculada Hernandez, ...,
Matthias Schlesner, Holger Heyn,
Şevin Turcan

Correspondence

holger.heyn@cnag.eu (H.H.),
sevin.turcan@med.uni-heidelberg.de
(Ş.T.)

In brief

Blanco-Carmona et al. apply single-nucleus RNA-seq and ATAC-seq to profile the cellular heterogeneity in adult IDH-mutant gliomas. They identify a range of transcriptional states within tumor cells and tumor-associated macrophage subpopulations in these gliomas. Comparing the relative abundance of these populations sheds light on the distinctions between IDH-mutant glioma subtypes.

Highlights

- A tumor population shows increased expression of ribosomal genes and elongation factors
- Longitudinal analysis of astrocytomas reveals stable tumor populations during recurrence
- Receptor-ligand analysis infers interactions between tumor and TAM subpopulations
- Compositions of TAM transcriptional states differ in oligodendrogliomas and astrocytomas



Report

Tumor heterogeneity and tumor-microglia interactions in primary and recurrent IDH1-mutant gliomas

Enrique Blanco-Carmona,^{1,2,16} Ashwin Narayanan,^{3,15,16} Inmaculada Hernandez,^{4,5,16} Juan C. Nieto,^{5,16} Marc Elosua-Bayes,⁵ Xueyuan Sun,^{3,10} Claudia Schmidt,⁶ Necmettin Pamir,⁷ Koray Özdoğan,⁷ Christel Herold-Mende,⁸ Francesca Pagani,⁹ Manuela Cominelli,⁹ Julian Taranda,^{3,10} Wolfgang Wick,^{3,10} Andreas von Deimling,¹¹ Pietro Luigi Poliani,⁹ Michael Rehli,^{4,12} Matthias Schlesner,¹³ Holger Heyn,^{5,14,*} and Şevin Turcan^{3,10,17,*}

¹Hopp Children's Cancer Center (KiTZ), Heidelberg, Germany

²Division of Pediatric Neurooncology, German Cancer Research Center (DKFZ) and German Cancer Consortium (DKTK), Heidelberg, Germany

³Neurology Clinic and National Center for Tumor Diseases, Heidelberg University Hospital and Heidelberg University, Heidelberg, Germany

⁴Next Generation Sequencing Core, Leibniz Institute for Immunotherapy, c/o University Hospital Regensburg, Regensburg, Germany

⁵CNAG-CRG, Centre for Genomic Regulation (CRG), Barcelona Institute of Science and Technology (BIST), Barcelona, Spain

⁶Core Facility Unit Light Microscopy, DKFZ, Heidelberg, Germany

⁷Acibadem Mehmet Ali Aydınlar University, School of Medicine, Department of Neurosurgery, Istanbul, Turkey

⁸Division of Experimental Neurosurgery, Department of Neurosurgery, Heidelberg University Hospital, Heidelberg, Germany

⁹Pathology Unit, Department of Molecular and Translational Medicine, University of Brescia Medical School, Brescia, Italy

¹⁰DKTK CCU Neurooncology, DKFZ, Heidelberg, Germany

¹¹Department of Neuropathology, Heidelberg University Hospital, and DKTK CCU Neuropathology, DKFZ, Heidelberg, Germany

¹²Department of Internal Medicine III, University Hospital Regensburg, Regensburg, Germany

¹³Biomedical Informatics, Data Mining and Data Analytics, Faculty for Applied Informatics, University of Augsburg, Augsburg, Germany

¹⁴Universitat Pompeu Fabra, Barcelona, Spain

¹⁵Present address: QV Bioelectronics, Ltd., Cheshire, UK

¹⁶These authors contributed equally

¹⁷Lead contact

*Correspondence: holger.heyne@cnag.eu (H.H.), sevin.turcan@med.uni-heidelberg.de (Ş.T.)

<https://doi.org/10.1016/j.xcrm.2023.101249>

SUMMARY

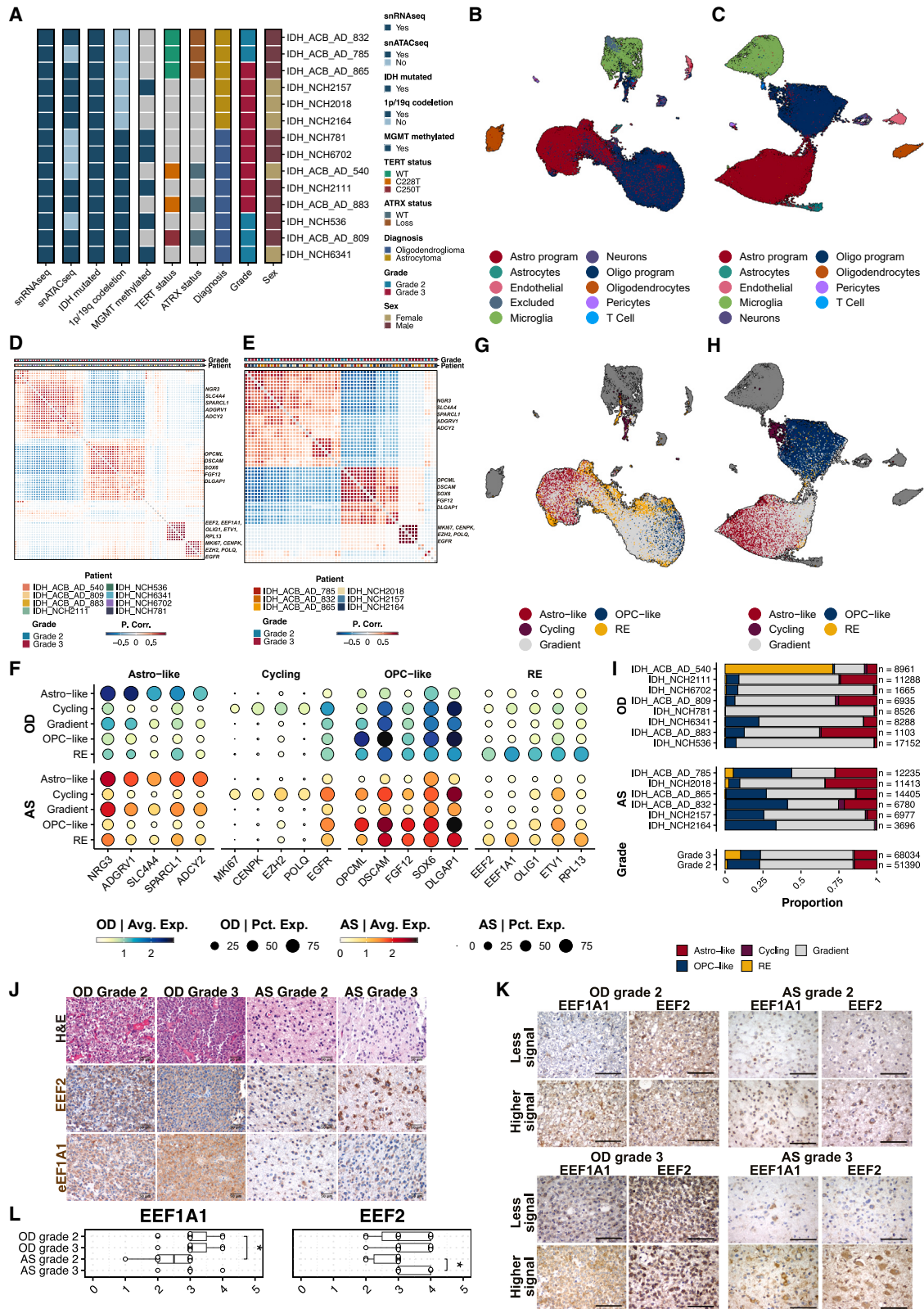
The isocitrate dehydrogenase (IDH) gene is recurrently mutated in adult diffuse gliomas. IDH-mutant gliomas are categorized into oligodendrogliomas and astrocytomas, each with unique pathological features. Here, we use single-nucleus RNA and ATAC sequencing to compare the molecular heterogeneity of these glioma subtypes. In addition to astrocyte-like, oligodendrocyte progenitor-like, and cycling tumor subpopulations, a tumor population enriched for ribosomal genes and translation elongation factors is primarily present in oligodendrogliomas. Longitudinal analysis of astrocytomas indicates that the proportion of tumor subpopulations remains stable in recurrent tumors. Analysis of tumor-associated microglia/macrophages (TAMs) reveals significant differences between oligodendrogliomas, with astrocytomas harboring inflammatory TAMs expressing phosphorylated STAT1, as confirmed by immunohistochemistry. Furthermore, inferred receptor-ligand interactions between tumor subpopulations and TAMs may contribute to TAM state diversity. Overall, our study sheds light on distinct tumor populations, TAM heterogeneity, TAM-tumor interactions in IDH-mutant glioma subtypes, and the relative stability of tumor subpopulations in recurrent astrocytomas.

INTRODUCTION

Diffuse gliomas exhibit recurrent mutations in the isocitrate dehydrogenase (IDH) gene.¹ IDH-mutant gliomas are classified into two subtypes: oligodendrogliomas featuring chromosome arm 1p/19q co-deletion and astrocytomas characterized by euploid 1p/19q.² Intratumoral heterogeneity is a feature of IDH-mutant gliomas,^{3,4} showcasing a hierarchy of cellular phenotypes wherein a neural stem cell-like population gives rise to

tumor subpopulations resembling expression profiles of astrocytes and oligodendrocytes. Nevertheless, a comprehensive comparative analysis of transcriptional and epigenomic heterogeneity in oligodendrogliomas versus astrocytomas remains elusive. Furthermore, IDH-mutant gliomas manifest distinct activation states of tumor-associated microglia/macrophages (TAMs),^{5,6} although it remains uncertain whether TAM composition differs between oligodendrogliomas and astrocytomas, how tumor subpopulations interact with TAMs, and to what extent





(legend on next page)

tumor grade and recurrence influence TAM diversity. Therefore, analyses of tumor heterogeneity and tumor-host interactions are important for our understanding of IDH-mutant gliomas and their evolution.

Here, we performed high-throughput single-nucleus RNA and ATAC sequencing (snRNA- and snATAC-seq) on primary IDH-mutant gliomas and snRNA-seq on a cohort of primary and recurrent astrocytoma pairs. This effort generated a comprehensive resource for resolving tumor diversity and TAM states. Our findings reaffirm previously described differentiation hierarchies and unveil a distinct subgroup of non-cycling, ribosomal-enriched stem-like tumor cells characterized by unique epigenetic and transcriptional signatures. We identify significant transcriptional differences in TAM states between oligodendrogliomas and astrocytomas. By mapping receptor-ligand interactions between tumor and TAM subpopulations, we highlight a notable interaction between inflammatory TAMs and astrocytic tumor subpopulations in astrocytomas, subsequently validated through immunohistochemistry in independent cohorts. Results from the clinical trial with vorasidenib, the brain-penetrant mutant IDH inhibitor, has shown promising results in patients with grade 2 IDH-mutant gliomas, significantly improving progression-free survival and delaying time to next intervention.⁷ Moving forward, molecular studies focused on higher grade and recurrent IDH-mutant gliomas may uncover molecular alterations suitable for targeted therapeutic strategies.

RESULTS

Tumor metasignatures in IDH-mutant gliomas reveal the presence of a ribosomal-enriched population

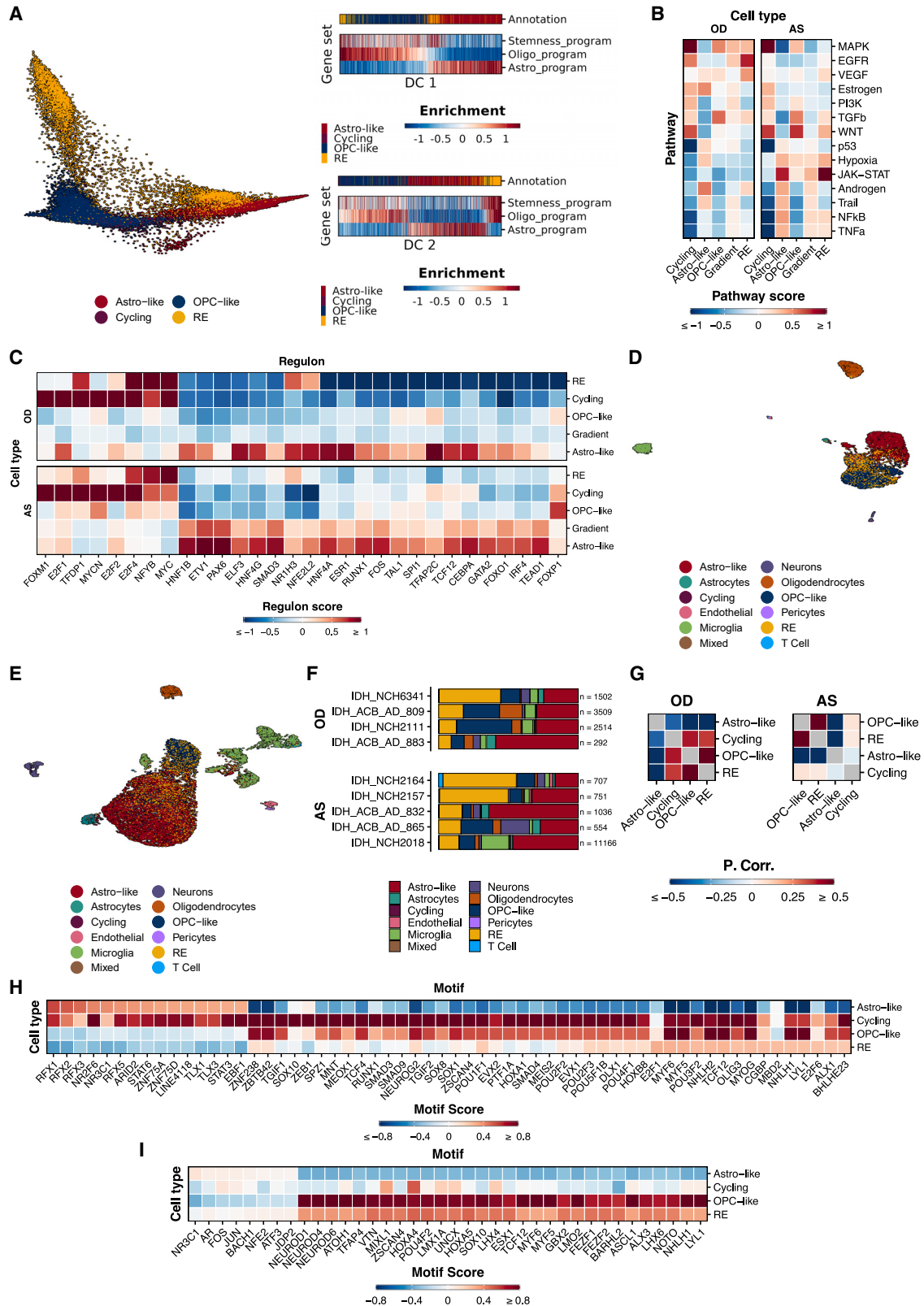
To investigate intratumor heterogeneity in adult IDH-mutant gliomas, we generated snRNA-seq from 14 snap-frozen primary tissues, comprising 8 oligodendrogliomas and 6 astrocytomas (Figure 1A; Tables S1A–S1D), encompassing 76,680 and 72,385 nuclei, respectively. We used a multistep approach to delineate cell types based on their genetic and transcriptional states. To distinguish nuclei as tumor or tumor microenvironment (TME)-derived, we merged, normalized, and clustered the datasets, assigning initial cell-type classifications to each cluster using literature-derived marker signatures.^{4,8–10} This approach identified major cell types, including microglia, oligodendro-

cytes, neurons, astrocytes, endothelial cells, pericytes, and T cells (Figures S1A and S1B). Using microglia and oligodendrocytes as non-malignant references, we inferred genome-wide copy-number alterations (CNAs) from snRNA-seq data and compared CNA profiles to distinguish malignant and non-malignant cells. In oligodendrogliomas, we detected the broad-arm 1p/19q co-deletion, whereas astrocytomas exhibited CNA heterogeneity, with glioma-specific amplifications (e.g., chromosome 7) and deletions (e.g., chromosome 10) observed in several patients but not all (Figures S1C and S1D). Following data integration with Harmony,¹¹ we labeled tumor cells based on enrichment of previously described⁶ astrocyte (astro)-like, oligodendrocyte progenitor cell (OPC)-like (oligo), and cycling programs (Figures 1B and 1C).

We then characterized tumor cells using unbiased non-negative matrix factorization (NMF) independently for each patient's tumor cells, revealing shared tumor-associated transcriptional programs (NMF programs). Hierarchical clustering of these programs revealed four major clusters (NMF metaprograms) in oligodendrogliomas (Figure 1D) and three in astrocytomas (Figure 1E), with strong pairwise correlations. Two metaprograms resembled previously described⁴ astro-like (*NRG3*, *ADGRV1*, *SPARCL1*) and oligo-like (*OPCML*, *DSCAM*) programs. We also identified a cycling metaprogram (*MKI67*, *CENPK*) and a fourth metaprogram enriched in elongation factors (*EEF2*, *EEF1A1*), stemness genes (*OLIG1*), oncogenes (*ETV1*), and ribosomal genes (*RPL13*), which we termed the ribosomal-enriched (RE) program (Figures 1F–1H; Tables S2A and S2B). Enrichment analysis of cells for these metaprograms revealed a gradient nature rather than a clear association with specific clusters. To statistically categorize cells enriched for each metaprogram, we implemented a permutation testing approach to label tumor cells. Specifically, cells enriched (adjusted $p \leq 0.0125$) for either OPC-like or astro-like metaprograms received a primary assignment. Subsequently, cells were assigned to the RE metaprogram and then to the cycling metaprogram, replacing previous labels. Finally, tumor cells that were not statistically enriched for any metaprogram were labeled as “gradient” (Figures 1F and 1G). The gradient population shared some characteristics with the four metaprograms but to a lesser extent (Figures S1E and S1F). In the integrated uniform manifold approximation and projection (UMAP), gradient cells showed proximity to the

Figure 1. snRNA-seq identifies gene expression programs driving cell states in IDH-mutant gliomas

- (A) Clinical and molecular characteristics of the IDH-mutant glioma cohort for single-nuclei sequencing.
 (B and C) UMAP representation and initial cluster assignments for integrated snRNA-seq samples of oligodendrogliomas (n = 8) (B) and astrocytomas (n = 6) (C). Nuclei labeled as “excluded” in (B) are omitted from downstream analyses due to technical reasons (tumor cells clustering with microglia and originating from a single patient). UMAP1, x axis; UMAP2, y axis. Colors indicate cell-type assignments.
 (D and E) Pearson's correlation scores for individual NMF programs in oligodendrogliomas (n = 8) (D) and astrocytomas (n = 6) (E). Metaprograms were identified by hierarchical clustering of individual NMF programs.
 (F) Dot plot displaying five marker genes for each tumor population.
 (G and H) UMAP embedding of oligodendrogliomas (G) and astrocytomas (H), colored by NMF metaprograms, gradient cells, and TME (dark gray).
 (I) Bar plot showing tumor population proportions across individual samples, grouped by subtype and grade. Bars are arranged by descending RE proportion.
 (J) Representative IHC staining for H&E and two RE population markers, *EEF2* and *EEF1A1*, for oligodendroglioma and astrocytoma samples, separated by grade. Oligodendroglioma (OD) n = 22 (11 grade 2, 11 grade 3); astrocytoma (AS) n = 15 (10 grade 2, 5 grade 3). Scale bars represent 50 μ m.
 (K) Spatial distribution of *EEF2* and *EEF1A1* (40 \times). Scale bars represent 50 μ m.
 (L) Plots showing semi-quantitative histological scores (0 = 0%, 1 = 0%–5%, 2 = 6%–29%, 3 = 30%–69%, and 4 >70% positive staining) for *EEF2* (top) and *EEF1A1* (bottom). Top: a qualitative increase in *EEF2* staining in grade 3 compared with grade 2 AS tumors. Bottom: a qualitative increase in *EEF1A1* staining in grade 2 OD tumors compared with grade 2 AS tumors. Wilcoxon rank-sum test was performed to test for significance, * $p < 0.05$.



(legend on next page)

OPC-like population in oligodendrogliomas (Figure 1G) and the astro-like population in astrocytomas (Figure 1H). When isolated and clustered, the gradient population was enriched for both astro-like and OPC-like populations in both tumor types (Figures S1G and S1H), suggesting partial resemblance to both populations without definitive metaprogram assignment.

Cell-type proportion analysis showed a higher OPC-like population in astrocytomas compared with oligodendrogliomas, whereas the RE population was variable and particularly high in one patient (Figure 1I). To ensure the robustness of the RE metaprogram, we performed additional NMF analyses in oligodendrogliomas without ribosomal genes and excluding the patient with high RE (Figures S2A–S2D). This analysis yielded a metaprogram with the same key marker genes and statistically enriched cells, confirming its reliability (Table S3). Furthermore, nuclei assigned to this metaprogram had high unique molecular identifiers (UMIs) and gene counts (Figures S2E and S2F), confirming its high-quality composition.

To validate the RE population, we used SPOTlight¹² to deconvolute IDH-mutant glioma cohorts from The Cancer Genome Atlas (TCGA) and the Chinese Glioma Genome Atlas (CGGA) (Figures S3). We detected varying proportions of the RE population in oligodendrogliomas in both cohorts, except for one tumor in the CGGA cohort (Figures S3E and S3G). However, not all astrocytomas harbored the RE population (Figures S3F and S3H). Additionally, we queried IDH-mutant glioma single-cell datasets^{3,4} for enrichment of the RE population (Figures S4A and S4B). Cells were considered RE if the likelihood of finding an enrichment score higher than the empirical value was less than 5%. We then computed cell activities using decoupleR¹³ with a custom network consisting of our NMF metaprograms and literature-derived⁶ astro and oligo programs. This analysis revealed significant RE metaprogram activity in the selected RE population in both oligodendrogliomas (Figure S4A) and astrocytomas (Figure S4B), indicating a clear association. To exclude random enrichment effects, we computed cell activities based on a network containing the RE metaprogram and 50 gene sets with randomly selected genes with similar expression levels to those in the RE metaprogram. The results demonstrated high activity of the RE metaprogram compared with random gene sets (Figure S4A, right, and S4B, right).

To support our findings, we performed immunohistochemistry (IHC) with RE markers (EEF2 and EEF1A1) in a validation cohort of 22 oligodendrogliomas and 15 astrocytomas. The results revealed more positively stained tumor cells in primary oligodendrogliomas than in astrocytomas (Figures 1J–1L). Notably, EEF2 levels increased significantly with tumor grade in astrocy-

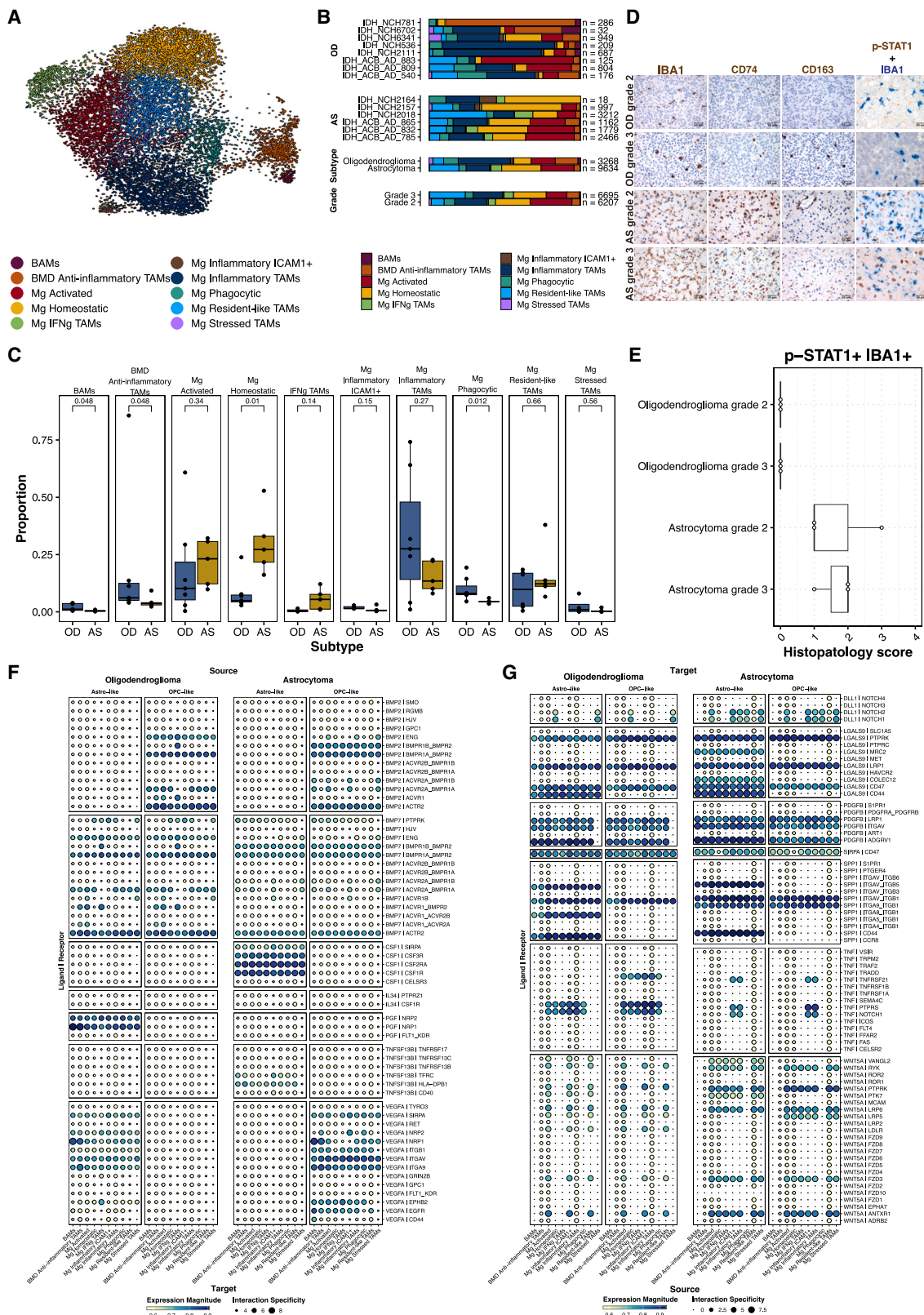
tomas, and EEF1A1 levels were higher in grade 2 oligodendrogliomas than in grade-matched astrocytomas (Figures 1J and 1L). Both proteins exhibited spatial heterogeneity, more so in astrocytomas than in oligodendrogliomas (Figures 1K and S5).

To gain deeper insights into tumor subpopulations, we focused on stemness-associated genes⁴ in IDH-mutant gliomas and computed a diffusion map using these genes and the astro-like and oligo-like programs (Figures S4C and S4D). Ordering cells along diffusion component 2 (DC2) revealed a correlation between stemness-associated gene enrichment and the positive end of DC2, predominantly driven by RE cells, indicating their stem-like properties (Figure 2A). Functional enrichment analysis¹⁴ revealed depletion of the p53 signature and enrichment of the proliferation-associated FOXM1¹⁵ signature in cycling cells but not in the RE population (Figures 2B and 2C), suggesting the presence of non-cycling progenitor-like cells in IDH-mutant gliomas. To contextualize the tumor populations with respect to normal development and glioblastoma, we performed reference mapping with Azimuth¹⁶ against two reference datasets: GBmap,¹⁷ the single-cell atlas of glioblastoma (Figures S6A and S6B), and a human fetal development atlas (Figures S6C and S6D). In both datasets, the RE population was highly enriched for oligodendrocytes/OPC-like cells (Figure S6), suggesting similarities to an oligo-like program.

To determine whether oligodendrogliomas and astrocytomas exhibited unique chromatin accessibility profiles, we generated snATAC-seq on 4 oligodendrogliomas (total nuclei = 7,817) and 5 astrocytomas (total nuclei = 14,214) (Figures 1A and S7; Tables S1E–S1H, S2C, and S2D). The nuclei used for snATAC-seq were paired with snRNA-seq samples.¹⁸ For annotation, we performed label transfer from snRNA-seq to snATAC-seq data, excluding the gradient population that did not fit any NMF metaprogram. We identified NMF-derived tumor and TME populations in oligodendrogliomas (Figure 2D) and astrocytomas (Figure 2E). Cell-type proportions revealed a higher prevalence of OPC-like cells in oligodendrogliomas and an astro-like predominance in astrocytomas (Figure 2F). The RE population was consistently present in the snATAC-seq data across all tumors, suggesting an epigenetically distinct RE population in both tumor types. However, the RE population was transcriptionally more prominent in oligodendrogliomas. The astro-like and OPC-like populations formed separate clusters with negatively correlated chromatin accessibility profiles (Figure 2G). Enrichment analysis using Genomic Regions Enrichment of Annotations Tool (GREAT)¹⁹ showed that OPC-like populations in both oligodendrogliomas and astrocytomas were enriched in oligodendrocyte differentiation and glial cell-fate commitment,

Figure 2. Integrated snRNA-seq and snATAC-seq indicates a stem-like signature in the RE tumor population

- (A) Diffusion map visualization of tumor cells in OD and AS tumors, based on publicly available⁴ astro-like, oligo-like, and stemness program markers. Right: scaled and centered enrichment scores for NMF metaprograms. Cells are ordered along diffusion components 1 (DC₁) and 2 (DC₂); gradient cells were excluded for clarity.
- (B) Scaled and centered pathway activity scores (normalized weighted mean from snRNA-seq) for OD and AS tumors.
- (C) Scaled and centered regulon activity scores (normalized weighted mean from snRNA-seq) for OD and AS tumors.
- (D and E) UMAP embedding of OD (D) and AS (E) snATAC-seq data (OD n = 4, AS n = 5) colored by labels transferred from snRNA-seq datasets. UMAP1, x axis; UMAP2, y axis.
- (F) Bar plot showing proportion of cell types in snATAC-seq data.
- (G) Pearson correlation of highly variable peaks from snATAC-seq data in OD and AS tumors.
- (H and I) Heatmap showing the top significantly enriched transcription factor motifs in OD (H) and AS tumors (I). Scores are scaled and centered for clarity.



(legend on next page)

whereas the astro-like population of oligodendrogliomas was enriched in Notch signaling pathway regulation and blood vessel development (Table S4). Chromatin-accessibility-based correlation analysis indicated an association between RE and OPC-like populations, with a weaker association with the cycling population (Figure 2G). Transcription factor (TF) motif enrichment analysis using chromVAR²⁰ showed significantly enriched motifs in all clusters of both oligodendrogliomas (Figure 2H) and astrocytomas (Figure 2I). Motifs enriched in the RE cluster displayed similarities to OPC-like populations in both tumor types (Figures 2H and 2I). Although E2F1 was not transcriptionally overrepresented in the RE population, its regulon showed slight enrichment in oligodendrogliomas and, to a lesser degree, in astrocytomas (Figure 2C). Coupled with the E2F1 motif accessibility, this regulatory program may be poised for activation in gliomas.

The immune microenvironment of IDH-mutant gliomas

In gliomas, TAMs²¹ consisting of tissue-resident microglia, bone-marrow-derived (BMD) macrophages, and border-associated macrophages (BAMs) are the most abundant non-tumor cells. To determine differences in TAM composition between oligodendrogliomas and astrocytomas, we integrated, clustered, and annotated TAM subpopulations from both tumor types, using literature-derived marker genes.^{22,23} Each TAM subpopulation was further annotated as microglia (Mg), BMD macrophages, or BAMs based on marker gene enrichment. We identified ten TAM subpopulations: Mg homeostatic (*PTPRC*, *ITGAM*, *P2RY12*); Mg activated (*CX3CR1*, *GPR34*, *FOXP2*); Mg resident-like (*PLCL1*, *CEBPD*, *VIM*); Mg stressed (*HSPA1A*, *HSPA1B*, *SORCS2*); Mg phagocytic (*GPNMB*, *RGCC*, *PPARG*); Mg inflammatory (*CCL4*, *IL1B*, *CCL3*); Mg inflammatory ICAM1⁺ (*ICAM1*, *RELB*, *TNFAIP3*); Mg interferon γ (IFN γ ; *IFIT2*, *IFIT3*, *STAT1*); BAMs (*F13A1*, *LYVE1*, *CD36*); and BMD anti-inflammatory (*CD163*, *SELENOP*, *MRC1*) (Figures 3A and S8A; Table S2E). Oligodendrogliomas and astrocytomas showed significantly different proportions of TAM subpopulations (Figure 3B). Mg homeostatic TAMs ($p = 0.01$, Wilcoxon test) were more abundant in astrocytomas, whereas BAM ($p = 0.048$, Wilcoxon test), BMD anti-inflammatory ($p = 0.048$, Wilcoxon test), and Mg phagocytic ($p = 0.012$, Wilcoxon test) TAMs were more abundant in oligodendrogliomas (Figure 3C).

Using marker genes, we scored each TAM subpopulation as pro- or anti-inflammatory, finding no distinct differences between oligodendrogliomas and astrocytomas (Figures S8B–

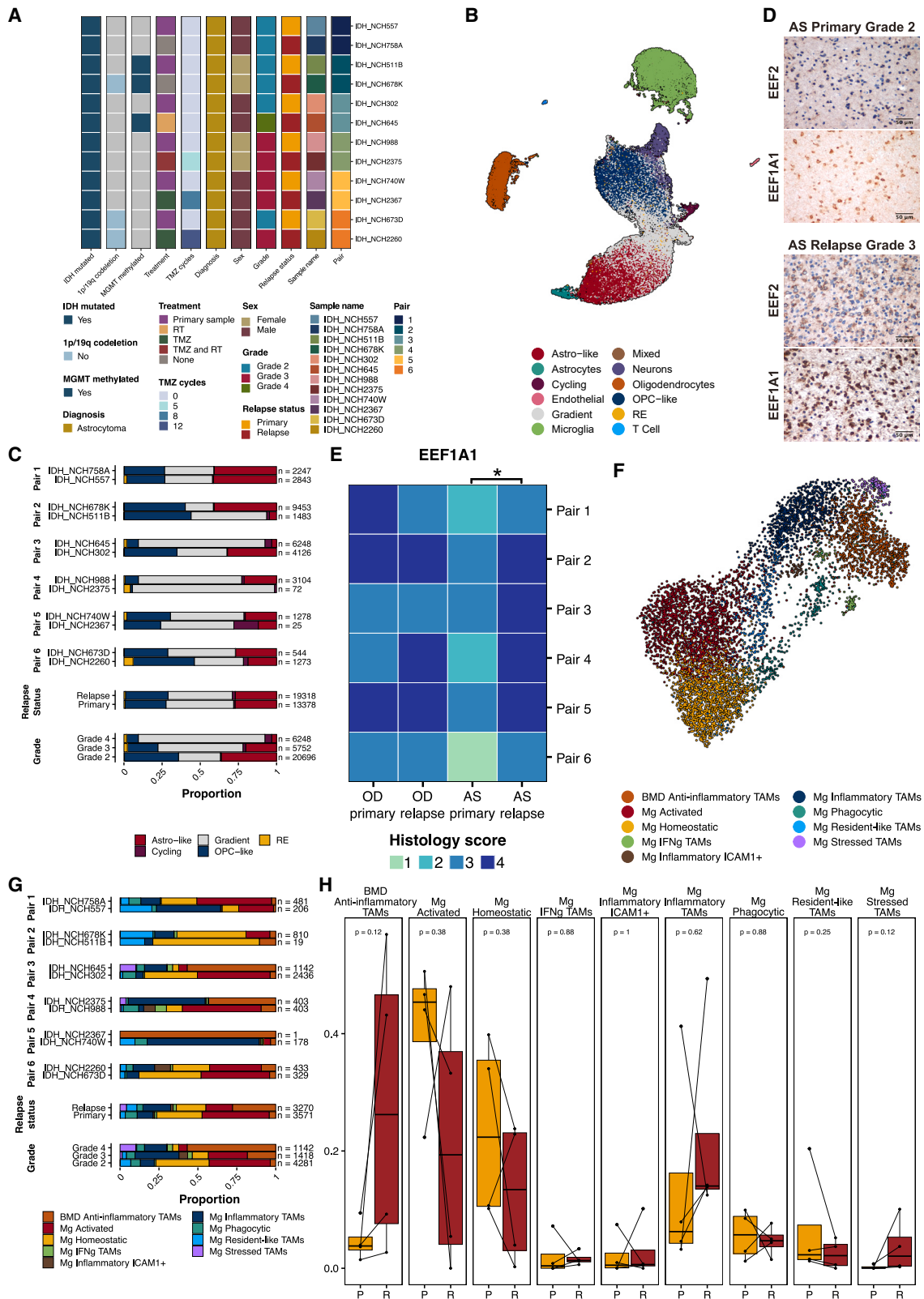
S8D). We performed IHC with several TAM markers including IBA1 (TAM marker), CD74 (marker of pro-inflammatory M1-like phenotype²⁴), and CD163 (marker of anti-inflammatory M2-like phenotype²⁵) on grade 2 and 3 astrocytomas and oligodendrogliomas ($n = 5$ per group). We observed diffuse and intense positive immunostaining for IBA1 in astrocytomas, mainly corresponding to activated ramified Mg-like cells, along with a small number of macrophages, independent of tumor grade (Figure 3D). In oligodendroglioma, fewer IBA1⁺ cells were observed compared with astrocytomas, primarily showing a rounded ameboid-like TAM morphology. Astrocytoma TAMs mainly expressed CD74, with a small number of anti-inflammatory CD163⁺ TAMs. In oligodendroglioma, CD74⁺ cells were barely detected, with few immunoreactive CD163⁺ cells, all exerting a macrophage phenotype. Double IHC staining showed the presence of phospho-STAT1 (p-STAT1) on a subset of IBA1⁺ TAMs in astrocytomas ($n = 6$) but not in oligodendrogliomas ($n = 6$) (Figures 3D and 3E). Double IHC staining with IDH1 R132H and p-STAT1 antibodies indicated that a proportion of p-STAT1⁺/IBA1⁻ cells were tumor cells (Figure S9A).

We then explored whether TAM diversity might result from interactions of TAMs with tumor cells. Using LIANA,²⁶ we predicted enriched receptor-ligand interactions between tumor populations (astro-like and OPC-like) and TAM subpopulations (Figures 3F and 3G). These interactions included BMP pathway proteins in the OPC-like population and PGF-NRP1/2 interactions between the astro-like population and TAMs in oligodendrogliomas, although these interactions were significant in both tumor types. Other interactions were more ubiquitous, such as SIRPA-CD47, suggesting that tumor cells may block the phagocytic capacity of innate immune cells.²⁷ WNT5A-FZD3 and WNT5A-PTPRK interactions were common across TAM subpopulations, and the astro-like population of astrocytomas exhibited stronger CSF1-CSF1R interactions with TAMs (Figure 3F), although this was less pronounced in oligodendrogliomas. Receptor-ligand interactions from TAMs to tumor populations included DLL1 in astrocytomas and tumor necrosis factor (TNF) in oligodendrogliomas (Figure 3G).

We validated two receptor-ligand pairs, CSF1-CSF1R and PGF-NRP1, via IHC on two formalin-fixed, paraffin-embedded grade 2 astrocytomas with >60% tumor content. We qualitatively confirmed CSF1 and CSF1R (in serial sections) (Figure S9A) and PGF and NRP1 (in separate sections) (Figure S9B) in primary tissues. CSF1 and CSF1R showed a wider staining pattern, whereas PGF and NRP1 staining patterns were scattered.

Figure 3. Integrated TAM states highlight differences between AS and OD tumors

- (A) UMAP embedding of integrated microglia from snRNA-seq data of primary OD and AS tumors, colored by assigned TAM subpopulations. UMAP1, x axis; UMAP2, y axis.
 (B) Bar plots indicating TAM subpopulation proportions, separated by tumor subtype and grade.
 (C) Boxplots showing TAM subpopulation proportions by tumor type. OD, oligodendroglioma; AS, astrocytoma. Wilcoxon rank-sum test was performed to test for significance.
 (D) Representative IHC staining for TAM markers IBA1, CD74, and CD163 and double staining for p-STAT1 and IBA1 (60 \times) in OD and AS tumors. Images are captured at either 40 \times (scale bar, 50 μ m) or 60 \times original magnification (scale bar, 30 μ m)
 (E) Plots showing semi-quantitative histological scores (0 = 0%, 1 = 0%–5%, 2 = 6%–29%, 3 = 30%–69%, 4 >70% positive staining) for p-STAT1⁺IBA1⁺ TAMs in OD and AS tumors, separated by grade ($n = 3$ per group).
 (F and G) Select statistically significant receptor-ligand interactions between OPC-like and astro-like tumor populations (source) and the TAM subpopulations (target) (F) and TAM subpopulations (source) and OPC-like and astro-like tumor cells (target) (G). Dot size represents significance (adjusted p values); dot color reflects expression magnitude (means of average expression level of the interacting pair of genes).



(legend on next page)

CSF1/CSF1R regulates macrophage development and survival,^{28,29} while the PGF/NRP1 signaling axis is a potential therapeutic target in pediatric medulloblastoma³⁰ and intrahepatic cholangiocarcinoma.³¹ Taken together, these results highlight the heterogeneity of receptor-ligand pairs between TAMs and tumor cells, suggesting potential pathways favored by oligodendrogliomas or astrocytomas. Further studies are needed to elucidate their functional consequences.

IDH-mutant gliomas have low baseline infiltration by T cells.^{32,33} We also observed a small number of T cells in our cohort (86 in oligodendrogliomas and 171 in astrocytomas). TOX, a critical TF for T cell exhaustion,^{34,35} was expressed in both tumor types in our cohort (Figure S8E), although this remains an observation that needs to be confirmed in larger IDH-mutant glioma datasets.

Grade- and recurrence-related changes in IDH-mutant gliomas

To assess grade- and recurrence-related differences in tumor and TAM subpopulations, we conducted snRNA-seq on six patients with paired primary and recurrent astrocytomas. This cohort included two untreated patients and four treated with radiotherapy (RT), temozolomide (TMZ), or both (12 tumors in total) (Figure 4A; Tables S1K and S1L). Integrating and clustering of these paired datasets, totaling 48,723 nuclei, revealed all major cell types, including the gradient and RE populations (Figures 4B, S1I, S2D, and S2G; Table S2F). Proportions of astro-like and OPC-like tumor populations showed no significant changes at recurrence (Figures 4C and S10B). However, we observed a grade-dependent increase in cycling and gradient populations along with a decrease in OPC-like and astro-like populations (Figure 4C). Using EEF2 and EEF1A1 as RE markers, we performed IHC in cohorts of paired primary and recurrent oligodendrogliomas (6 patients, 12 tumors) and paired primary and recurrent astrocytomas (6 patients, 12 tumors; Figure 4D). Recurrent astrocytomas exhibited higher EEF2 immunostaining and an increase in EEF1A1⁺ cells compared with primary astrocytomas (Figure 4E). In oligodendrogliomas, EEF2⁺ and EEF1A1⁺ cells were highly expressed in both primary and recurrent tumors (Figure 4E).

Pooling Mg cells from paired astrocytomas revealed nine distinct TAM subpopulations: Mg homeostatic, Mg activated, Mg resident-like, Mg inflammatory ICAM1⁺, Mg inflammatory, Mg hypoxic, Mg phagocytic, Mg IFN γ , and BMD anti-inflammatory macrophages (Figure 4F; Table S2G). Similar to primary astrocytoma snRNA-seq data, BAM subpopulations were not iden-

tified in paired astrocytomas. We excluded the primary tumor of pair 2 and the recurrent tumor of pair 5 from Figure 4H due to their low Mg numbers. Cell-type proportion analysis showed a trend toward increased proportions of Mg hypoxic TAMs, BMD anti-inflammatory macrophages, and Mg IFN γ TAMs at recurrence and decreased Mg homeostatic TAMs at recurrence (Figures 4G and 4H). Furthermore, treated relapsed astrocytoma exhibited an increase in the proportion of BMD anti-inflammatory macrophages (pairs 3, 4, and 6), while untreated pairs (pairs 1 and 2) showed a reduction or a slight increase (Figures 4G and 4H). TAM proportion changes may also be associated with tumor grade more than relapse status (Figure S10A). These findings highlight complex interactions between tumor subtype, grade, and TAM states in IDH-mutant gliomas.

DISCUSSION

Recent studies have expanded our understanding of diffuse glioma heterogeneity. However, a comprehensive comparison between oligodendrogliomas and astrocytomas remains incomplete. In this study, we aimed to address these gaps by generating snRNA-seq/ATAC-seq datasets from primary IDH-mutant gliomas (oligodendroglioma and astrocytoma) and snRNA-seq data from paired primary and recurrent astrocytomas. Additionally, we integrated our genomics data with IHC analysis in separate cohorts of primary and recurrent IDH-mutant gliomas for comprehensive tumor and TAM composition comparisons.

We identified a distinct tumor cell population in IDH-mutant gliomas, referred to as RE. This population exhibited stem cell characteristics, lacked proliferation-associated genes, and showed high expression of ribosomal genes and elongation factors. We confirmed the presence of this population by verifying the expression of marker proteins EEF1A1 and EEF2 in separate tissue cohorts of IDH-mutant gliomas. While the RE population constituted a relatively low fraction of cell types in the snRNA-seq data, IHC indicated a broader distribution of EEF1A1 and EEF2. This discrepancy in distribution may arise from the limited number of cells expressing the complete RE metaprogram or from associations with spatial features within tumors. Ribosome composition has been linked to spatial heterogeneity in glioblastoma,³⁶ and the role of ribosome biogenesis in IDH-mutant gliomas warrants further exploration.

Our results reveal an enriched MYC/MYC N regulon within the RE population, suggesting increased biosynthetic properties due to the known targeting of EEF1A1 by MYC.³⁷ The combined

Figure 4. snRNA-seq of paired primary and recurrent AS cohorts indicates shifts in tumor populations associated with grade

- (A) Clinical and molecular characteristics of 6 paired primary and recurrent IDH-mutant AS cohorts for snRNA-seq.
 (B) UMAP embedding of integrated snRNA-seq data from paired AS tumors, colored by assigned cell types. UMAP1, x axis; UMAP2, y axis.
 (C) Bar plots showing tumor population proportions, separated by pairs, relapse status, and grade.
 (D) Representative IHC staining for RE markers EEF2 and EEF1A1 in paired primary (grade 2) and relapse (grade 3) AS tumors. Images are captured at 40x original magnification (scale bar, 50 μm)
 (E) Heatmap showing semi-quantitative EEF1A1 histological scores (0 = 0%, 1 = 0%–5%, 2 = 6%–29%, 3 = 30%–69%, 4 >70% positive staining) for 6 pairs of primary and recurrent OD and AS tumors. Wilcoxon signed-rank test for paired samples was performed to test for significance, * $p < 0.05$.
 (F) UMAP embedding of integrated microglia population of paired primary and recurrent AS cohorts, colored by assigned TAM subpopulations. UMAP1, x axis; UMAP2, y axis.
 (G) Bar plots showing TAM subpopulation proportions separated by pairs, relapse status, and grade.
 (H) Boxplots showing TAM subpopulation proportions separated by relapse status. P, primary; R, relapse.

analysis of single-nuclei and IHC data consistently demonstrated a higher RE prevalence in oligodendrogliomas compared with astrocytomas. Deconvolution of bulk RNA-seq datasets corroborated this finding, suggesting a widespread expression of the RE population in nearly all oligodendrogliomas. Targeting this population with differentiation-promoting therapies may hold promise,^{38,39} as biosynthetic capacity diminishes during tumor cell differentiation.⁴⁰

Understanding longitudinal changes in IDH-mutant glioma progression is necessary to identify drivers of progression. Spearheaded by the GLASS (Glioma Longitudinal Analysis) consortium, major efforts are underway to capture and analyze glioma dynamics.^{41,42} In our study, we investigated longitudinal changes in paired primary and recurrent astrocytomas to gain insights into glioma progression. Our findings indicated that transcriptional subpopulations identified in primary tumors persist in both treated (RT and/or TMZ) and untreated recurrent tumors. Importantly, tumor grade, rather than recurrence or treatment, may influence tumor and TAM subpopulations. This aligns with recent studies in gliomas where cell compositions remained relatively stable during recurrence.⁴³ These persistent cell states may represent potential therapeutic targets. For instance, combining master regulator analysis⁴⁴ with functional studies on transcriptional states could yield insights into key mechanisms maintaining these cellular identities. Additionally, uncovering the bidirectional interactions between tumor populations and the TME is critical for understanding glioma biology and developing effective therapies. While gliomas harbor tumor cells with expression signatures resembling astros and OPCs, their functions remain poorly understood. Here, we characterized receptor-ligand interactions between tumor and TAM subpopulations, and our findings suggest that the astro-like tumor subpopulation may orchestrate a pro-inflammatory microenvironment in astrocytomas driven by IFN γ signaling, which induces STAT1 phosphorylation. These distinctions highlight the role of IFN γ signaling in astrocytomas and raise the possibility that targeting tumor transcriptional states may reshape the TME landscape.

While TAM composition has been studied in IDH-mutant gliomas,^{5,45} a direct comparison between TAMs in oligodendrogliomas and astrocytomas is lacking. Our results, in line with previous studies,⁴⁵ show a higher proportion of Mg-derived TAMs in IDH-mutant gliomas compared with BMD-derived TAMs. However, we also observed significant differences in TAM transcriptional states between oligodendrogliomas and astrocytomas. Our combined snRNA-seq and IHC data indicate that astrocytomas contain inflammatory TAMs expressing p-STAT1, a key regulator of TAM inflammatory response and neuronal damage.^{46,47} Considering the distinct molecular alterations in oligodendrogliomas and astrocytomas, it remains to be determined whether any tumor-specific alterations contribute to myeloid diversity. Receptor-ligand analysis inferred potential interactions between tumor and TAM subpopulations, including a notable interaction between PGF (a VEGF family member) and NRP1. PGF is involved in immune modulation and cancer pathogenesis⁴⁸ and supports medulloblastoma growth through increased PGF signaling via Nrp1.³⁰ While we confirmed the presence of both proteins in primary tissues through IHC, further studies are needed to characterize and prioritize these candidate interaction pairs.

In summary, our study provides insights into heterogeneity of IDH-mutant gliomas by conducting a comprehensive comparison of oligodendrogliomas and astrocytomas. Our results shed light on distinct tumor populations, heterogeneity of TAM states, TAM-tumor interactions, and the relative stability of tumor and TAM transcriptional states in recurrent astrocytomas. We also emphasize the importance of categorizing IDH-mutant gliomas by subtype in both tumor and TME studies. These findings pave the way for further research to enhance our understanding of the complexity of diffuse gliomas.

Limitations of the study

We acknowledge several limitations of our study. First, it will be important to validate the roles of different tumor subpopulations in IDH-mutant glioma pathology. Second, although our study identified potential receptor-ligand pairs that may influence the diversity of myeloid states within these tumors, it remains to be determined whether and to what extent these inferred pairs interact *in situ* and contribute to the TAM landscape in gliomas. We validated several key findings using IHC on separate cohorts of primary and paired glioma tissues. However, addressing both of these aspects from a translational perspective will necessitate functional studies. Unfortunately, the scarcity of available *bona fide* preclinical models for IDH-mutant gliomas, particularly tumorspheres derived from untreated primary IDH-mutant gliomas, presents a challenge. Developing such models will facilitate the translational application of genomic studies and enhance our understanding of IDH-mutant gliomas.

STAR★METHODS

Detailed methods are provided in the online version of this paper and include the following:

- KEY RESOURCES TABLE
- RESOURCE AVAILABILITY
 - Lead contact
 - Materials availability
 - Data and code availability
- EXPERIMENTAL MODEL AND STUDY PARTICIPANTS DETAILS
 - Human patient samples
- METHOD DETAILS
 - Nucleus isolation from fresh frozen samples for snRNA-seq and snATAC-seq
 - Construction of libraries and generation of cDNA on the 10x genomics platform
 - Immunohistochemistry
 - Single-nucleus RNA-seq data analysis
 - Determination of malignant cells
 - Deconvolution
 - Single-nucleus ATAC-seq data analysis
 - Single nucleus RNA-seq data analysis of the tumor microenvironment
 - Non-negative matrix factorization (NMF) of primary samples
 - Assigning meta-programs to cells

- Pathway enrichment analysis and transcription factor-target interactions
- Inferring receptor-ligand interactions
- **QUANTIFICATION AND STATISTICAL ANALYSIS**
- Statistics

SUPPLEMENTAL INFORMATION

Supplemental information can be found online at <https://doi.org/10.1016/j.xcrm.2023.101249>.

ACKNOWLEDGMENTS

We would like to thank Volker Hovestadt for his input and the base code for NMF analysis and Martin Sill for his input and statistical advice on the permutation testing method design. This work was supported by the German Cancer Aid, Max Eder Program grant number 70111964 (S.T.), DFG Project-ID 404521405, SFB 1389 – UNITE Glioblastoma, work package A04 (S.T.), and the Baden-Württemberg Foundation project number ID27/DEFOG (S.T.). For the publication fee, we acknowledge financial support by Deutsche Forschungsgemeinschaft (DFG) within the funding program "Open Access Publikationskosten" as well as by Heidelberg University.

AUTHOR CONTRIBUTIONS

E.B.-C., A.N., I.H., J.C.N., H.H., and S.T. designed the study. A.N. performed snRNA-seq and snATAC-seq sample preparation with assistance from X.S. E.B.-C., A.N., I.H., J.C.N., and M.E.-B. conducted snRNA-seq and snATAC-seq computational analysis. N.P., K.O., and C.H.-M. provided fresh-frozen tissue samples. C.S., F.P., and M.C. performed the IHC experiments. A.v.D. and P.L.P. provided formalin-fixed, paraffin-embedded (FFPE) samples for IHC. J.T., M.C., and P.L.P. analyzed and scored the IHC data. J.T., W.W., M.R., and M.S. provided intellectual input. E.B.-C., A.N., I.H., J.C.N., H.H., and S.T. wrote the manuscript with comments from all authors. E.B.-C. generated all figures, as well as the associated GitHub code repository and GitHub pages. H.H. and S.T. supervised the project.

DECLARATION OF INTERESTS

The authors declare no competing interests.

INCLUSION AND DIVERSITY

We support inclusive, diverse, and equitable conduct of research.

Received: September 19, 2022

Revised: August 6, 2023

Accepted: September 27, 2023

Published: October 25, 2023

REFERENCES

1. Yan, H., Parsons, D.W., Jin, G., McLendon, R., Rasheed, B.A., Yuan, W., Kos, I., Batinic-Haberle, I., Jones, S., Riggins, G.J., et al. (2009). IDH1 and IDH2 mutations in gliomas. *N. Engl. J. Med.* *360*, 765–773. <https://doi.org/10.1056/NEJMoa0808710>.
2. Louis, D.N., Perry, A., Wesseling, P., Brat, D.J., Cree, I.A., Figarella-Branger, D., Hawkins, C., Ng, H.K., Pfister, S.M., Reifenberger, G., et al. (2021). The 2021 WHO Classification of Tumors of the Central Nervous System: a summary. *Neuro Oncol.* *23*, 1231–1251. <https://doi.org/10.1093/neuonc/noab106>.
3. Tirosh, I., Venteicher, A.S., Hebert, C., Escalante, L.E., Patel, A.P., Yizhak, K., Fisher, J.M., Rodman, C., Mount, C., Filbin, M.G., et al. (2016). Single-cell RNA-seq supports a developmental hierarchy in human oligodendrogloma. *Nature* *539*, 309–313. <https://doi.org/10.1038/nature20123>.
4. Venteicher, A.S., Tirosh, I., Hebert, C., Yizhak, K., Neftel, C., Filbin, M.G., Hovestadt, V., Escalante, L.E., Shaw, M.L., Rodman, C., et al. (2017). Decoupling genetics, lineages, and microenvironment in IDH-mutant gliomas by single-cell RNA-seq. *Science* *355*, eaai8478. <https://doi.org/10.1126/science.aai8478>.
5. Klemm, F., Maas, R.R., Bowman, R.L., Kornete, M., Soukup, K., Nassiri, S., Brouland, J.P., Iacobuzio-Donahue, C.A., Brennan, C., Tabar, V., et al. (2020). Interrogation of the Microenvironmental Landscape in Brain Tumors Reveals Disease-Specific Alterations of Immune Cells. *Cell* *181*, 1643–1660.e17. <https://doi.org/10.1016/j.cell.2020.05.007>.
6. Friedrich, M., Sankowski, R., Bunse, L., Kilian, M., Green, E., Ramallo-Guevara, C., Pusch, S., Poschet, G., Sanghvi, K., Hahn, M., et al. (2021). Tryptophan metabolism drives dynamic immunosuppressive myeloid states in IDH-mutant gliomas. *Nat. Cancer* *2*, 723–740. <https://doi.org/10.1038/s43018-021-00201-z>.
7. Mellinghoff, I.K., van den Bent, M.J., Blumenthal, D.T., Touat, M., Peters, K.B., Clarke, J., Mendez, J., Yust-Katz, S., Welsh, L., Mason, W.P., et al. (2023). Vorasidenib in IDH1- or IDH2-Mutant Low-Grade Glioma. *N. Engl. J. Med.* *389*, 589–601. <https://doi.org/10.1056/NEJMoa2304194>.
8. McKenzie, A.T., Wang, M., Hauberg, M.E., Fullard, J.F., Kozlenkov, A., Keenan, A., Hurd, Y.L., Dracheva, S., Casaccia, P., Roussos, P., and Zhang, B. (2018). Brain Cell Type Specific Gene Expression and Co-expression Network Architectures. *Sci. Rep.* *8*, 8868. <https://doi.org/10.1038/s41598-018-27293-5>.
9. Neftel, C., Laffy, J., Filbin, M.G., Hara, T., Shore, M.E., Rahme, G.J., Richman, A.R., Silverbush, D., Shaw, M.L., Hebert, C.M., et al. (2019). An Integrative Model of Cellular States, Plasticity, and Genetics for Glioblastoma. *Cell* *178*, 835–849.e21. <https://doi.org/10.1016/j.cell.2019.06.024>.
10. Weng, Q., Wang, J., Wang, J., He, D., Cheng, Z., Zhang, F., Verma, R., Xu, L., Dong, X., Liao, Y., et al. (2019). Single-Cell Transcriptomics Uncovers Glial Progenitor Diversity and Cell Fate Determinants during Development and Gliomagenesis. *Cell Stem Cell* *24*, 707–723.e8. <https://doi.org/10.1016/j.stem.2019.03.006>.
11. Korsunsky, I., Millard, N., Fan, J., Slowikowski, K., Zhang, F., Wei, K., Baglaenko, Y., Brenner, M., Loh, P.R., and Raychaudhuri, S. (2019). Fast, sensitive and accurate integration of single-cell data with Harmony. *Nat. Methods* *16*, 1289–1296. <https://doi.org/10.1038/s41592-019-0619-0>.
12. Elosua-Bayes, M., Nieto, P., Mereu, E., Gut, I., and Heyn, H. (2021). SPOTlight: seeded NMF regression to deconvolute spatial transcriptomics spots with single-cell transcriptomes. *Nucleic Acids Res.* *49*, e50. <https://doi.org/10.1093/nar/gkab043>.
13. Badia-I-Mompel, P., Vélez Santiago, J., Braunger, J., Geiss, C., Dimitrov, D., Müller-Dott, S., Taus, P., Dugourd, A., Holland, C.H., Ramirez Flores, R.O., and Saez-Rodriguez, J. (2022). decoupleR: ensemble of computational methods to infer biological activities from omics data. *Bioinform. Adv.* *2*, vbac016. <https://doi.org/10.1093/bioadv/vbac016>.
14. Holland, C.H., Tanevski, J., Perales-Patón, J., Gleixner, J., Kumar, M.P., Mereu, E., Joughin, B.A., Stegle, O., Lauffenburger, D.A., Heyn, H., et al. (2020). Robustness and applicability of transcription factor and pathway analysis tools on single-cell RNA-seq data. *Genome Biol.* *21*, 36. <https://doi.org/10.1186/s13059-020-1949-z>.
15. Wierstra, I., and Alves, J. (2007). FOXM1, a typical proliferation-associated transcription factor. *Biol. Chem.* *388*, 1257–1274. <https://doi.org/10.1515/BC.2007.159>.
16. Hao, Y., Hao, S., Andersen-Nissen, E., Mauck, W.M., 3rd, Zheng, S., Butler, A., Lee, M.J., Wilk, A.J., Darby, C., Zager, M., et al. (2021). Integrated analysis of multimodal single-cell data. *Cell* *184*, 3573–3587.e29. <https://doi.org/10.1016/j.cell.2021.04.048>.
17. Ruiz-Moreno, C., Salas, S.M., Samuelsson, E., Brandner, S., Kranendonk, M.E.G., Nilsson, M., and Stunnenberg, H.G. (2022). Harmonized single-cell landscape, intercellular crosstalk and tumor architecture of glioblastoma. Preprint at bioRxiv, 2022.2008.2027.505439. <https://doi.org/10.1101/2022.08.27.505439>.

18. Narayanan, A., Blanco-Carmona, E., Demirdizen, E., Sun, X., Herold-Mende, C., Schlesner, M., and Turcan, S. (2020). Nuclei Isolation from Fresh Frozen Brain Tumors for Single-Nucleus RNA-seq and ATAC-seq. *J. Vis. Exp.* <https://doi.org/10.3791/61542>.
19. McLean, C.Y., Bristol, D., Hiller, M., Clarke, S.L., Schaar, B.T., Lowe, C.B., Wenger, A.M., and Bejerano, G. (2010). GREAT improves functional interpretation of cis-regulatory regions. *Nat. Biotechnol.* *28*, 495–501. <https://doi.org/10.1038/nbt.1630>.
20. Schep, A.N., Wu, B., Buenrostro, J.D., and Greenleaf, W.J. (2017). chromVAR: inferring transcription-factor-associated accessibility from single-cell epigenomic data. *Nat. Methods* *14*, 975–978. <https://doi.org/10.1038/nmeth.4401>.
21. Hambardzumyan, D., Gutmann, D.H., and Kettenmann, H. (2016). The role of microglia and macrophages in glioma maintenance and progression. *Nat. Neurosci.* *19*, 20–27. <https://doi.org/10.1038/nn.4185>.
22. Pombo Antunes, A.R., Scheyltjens, I., Lodi, F., Messiaen, J., Antoranz, A., Duerinck, J., Kancheva, D., Martens, L., De Vlaminck, K., Van Hove, H., et al. (2021). Single-cell profiling of myeloid cells in glioblastoma across species and disease stage reveals macrophage competition and specialization. *Nat. Neurosci.* *24*, 595–610. <https://doi.org/10.1038/s41593-020-00789-y>.
23. Paolicelli, R.C., Sierra, A., Stevens, B., Tremblay, M.E., Aguzzi, A., Ajami, B., Amit, I., Audinat, E., Bechmann, I., Bennett, M., et al. (2022). Microglia states and nomenclature: A field at its crossroads. *Neuron* *110*, 3458–3483. <https://doi.org/10.1016/j.neuron.2022.10.020>.
24. Zeiner, P.S., Preusse, C., Blank, A.E., Zachskorn, C., Baumgarten, P., Caspary, L., Braczynski, A.K., Weissenberger, J., Bratzke, H., Reiß, S., et al. (2015). MIF Receptor CD74 is Restricted to Microglia/Macrophages, Associated with a M1-Polarized Immune Milieu and Prolonged Patient Survival in Gliomas. *Brain Pathol.* *25*, 491–504. <https://doi.org/10.1111/bpa.12194>.
25. Liu, S., Zhang, C., Maimela, N.R., Yang, L., Zhang, Z., Ping, Y., Huang, L., and Zhang, Y. (2019). Molecular and clinical characterization of CD163 expression via large-scale analysis in glioma. *Oncology* *8*, 1601478. <https://doi.org/10.1080/2162402X.2019.1601478>.
26. Dimitrov, D., Türei, D., Garrido-Rodríguez, M., Burmedi, P.L., Nagai, J.S., Boys, C., Ramirez Flores, R.O., Kim, H., Szalai, B., Costa, I.G., et al. (2022). Comparison of methods and resources for cell-cell communication inference from single-cell RNA-Seq data. *Nat. Commun.* *13*, 3224. <https://doi.org/10.1038/s41467-022-30755-0>.
27. Morrissey, M.A., Kern, N., and Vale, R.D. (2020). CD47 Ligation Repositions the Inhibitory Receptor SIRPA to Suppress Integrin Activation and Phagocytosis. *Immunity* *53*, 290–302.e6. <https://doi.org/10.1016/j.immuni.2020.07.008>.
28. Hume, D.A., and MacDonald, K.P.A. (2012). Therapeutic applications of macrophage colony-stimulating factor-1 (CSF-1) and antagonists of CSF-1 receptor (CSF-1R) signaling. *Blood* *119*, 1810–1820. <https://doi.org/10.1182/blood-2011-09-379214>.
29. Chitu, V., and Stanley, E.R. (2006). Colony-stimulating factor-1 in immunity and inflammation. *Curr. Opin. Immunol.* *18*, 39–48. <https://doi.org/10.1016/j.coi.2005.11.006>.
30. Snuderl, M., Batista, A., Kirkpatrick, N.D., Ruiz de Almodovar, C., Riedemann, L., Walsh, E.C., Anolik, R., Huang, Y., Martin, J.D., Kamoun, W., et al. (2013). Targeting placental growth factor/neuropilin 1 pathway inhibits growth and spread of medulloblastoma. *Cell* *152*, 1065–1076. <https://doi.org/10.1016/j.cell.2013.01.036>.
31. Aoki, S., Inoue, K., Klein, S., Halvorsen, S., Chen, J., Matsui, A., Nikmaneshi, M.R., Kitahara, S., Hato, T., Chen, X., et al. (2022). Placental growth factor promotes tumour desmoplasia and treatment resistance in intrahepatic cholangiocarcinoma. *Gut* *71*, 185–193. <https://doi.org/10.1136/gutjnl-2020-322493>.
32. Berghoff, A.S., Kiesel, B., Widhalm, G., Wilhelm, D., Rajky, O., Kurscheid, S., Kresl, P., Wöhrer, A., Marosi, C., Hegi, M.E., and Preusser, M. (2017). Correlation of immune phenotype with IDH mutation in diffuse glioma. *Neuro Oncol.* *19*, 1460–1468. <https://doi.org/10.1093/neuonc/nox054>.
33. Kohanbash, G., Carrera, D.A., Shrivastav, S., Ahn, B.J., Jahan, N., Mazor, T., Chheda, Z.S., Downey, K.M., Watchmaker, P.B., Beppler, C., et al. (2017). Isocitrate dehydrogenase mutations suppress STAT1 and CD8+ T cell accumulation in gliomas. *J. Clin. Invest.* *127*, 1425–1437. <https://doi.org/10.1172/JCI90644>.
34. Khan, O., Giles, J.R., McDonald, S., Manne, S., Ngiew, S.F., Patel, K.P., Werner, M.T., Huang, A.C., Alexander, K.A., Wu, J.E., et al. (2019). TOX transcriptionally and epigenetically programs CD8(+) T cell exhaustion. *Nature* *571*, 211–218. <https://doi.org/10.1038/s41586-019-1325-x>.
35. Scott, A.C., Dündar, F., Zumbo, P., Chandran, S.S., Klebanoff, C.A., Shakiba, M., Trivedi, P., Menocal, L., Appleby, H., Camara, S., et al. (2019). TOX is a critical regulator of tumour-specific T cell differentiation. *Nature* *571*, 270–274. <https://doi.org/10.1038/s41586-019-1324-y>.
36. Larionova, T.D., Bastola, S., Aksinina, T.E., Anufrieva, K.S., Wang, J., Shender, V.O., Andreev, D.E., Kovalenko, T.F., Arapidi, G.P., Shnaider, P.V., et al. (2022). Alternative RNA splicing modulates ribosomal composition and determines the spatial phenotype of glioblastoma cells. *Nat. Cell Biol.* *24*, 1541–1557. <https://doi.org/10.1038/s41556-022-00994-w>.
37. Li, M., Yang, L., Chan, A.K.N., Pokharel, S.P., Liu, Q., Mattson, N., Xu, X., Chang, W.H., Miyashita, K., Singh, P., et al. (2023). Epigenetic Control of Translation Checkpoint and Tumor Progression via RUVBL1-EEF1A1 Axis. *Adv. Sci.* *10*, e2206584. <https://doi.org/10.1002/advs.202206584>.
38. Park, J.W., Sahm, F., Steffl, B., Arrillaga-Romany, I., Cahill, D., Monje, M., Herold-Mende, C., Wick, W., and Turcan, S. (2021). TERT and DNMT1 expression predict sensitivity to decitabine in gliomas. *Neuro Oncol.* *23*, 76–87. <https://doi.org/10.1093/neuonc/noaa207>.
39. Turcan, S., Fabius, A.W.M., Borodovsky, A., Pedraza, A., Brennan, C., Huse, J., Viale, A., Riggins, G.J., and Chan, T.A. (2013). Efficient induction of differentiation and growth inhibition in IDH1 mutant glioma cells by the DNMT Inhibitor Decitabine. *Oncotarget* *4*, 1729–1736. <https://doi.org/10.18632/oncotarget.1412>.
40. Morral, C., Stanisavljevic, J., Hernando-Momblona, X., Mereu, E., Álvarez-Varela, A., Cortina, C., Stork, D., Slebe, F., Turon, G., Whissell, G., et al. (2020). Zonation of Ribosomal DNA Transcription Defines a Stem Cell Hierarchy in Colorectal Cancer. *Cell Stem Cell* *26*, 845–861.e12. <https://doi.org/10.1016/j.stem.2020.04.012>.
41. GLASS Consortium (2018). Glioma through the looking GLASS: molecular evolution of diffuse gliomas and the Glioma Longitudinal Analysis Consortium. *Neuro Oncol.* *20*, 873–884. <https://doi.org/10.1093/neuonc/nyo020>.
42. Barthel, F.P., Johnson, K.C., Varn, F.S., Moskaliuk, A.D., Tanner, G., Kocakavuk, E., Anderson, K.J., Abiola, O., Aldape, K., Alfaro, K.D., et al. (2019). Longitudinal molecular trajectories of diffuse glioma in adults. *Nature* *576*, 112–120. <https://doi.org/10.1038/s41586-019-1775-1>.
43. Varn, F.S., Johnson, K.C., Martinek, J., Huse, J.T., Nasrallah, M.P., Wesseling, P., Cooper, L.A.D., Malta, T.M., Wade, T.E., Sabedot, T.S., et al. (2022). Glioma progression is shaped by genetic evolution and microenvironment interactions. *Cell* *185*, 2184–2199.e16. <https://doi.org/10.1016/j.cell.2022.04.038>.
44. Paull, E.O., Aytes, A., Jones, S.J., Subramaniam, P.S., Giorgi, F.M., Douglass, E.F., Tagore, S., Chu, B., Vasciaveo, A., Zheng, S., et al. (2021). A modular master regulator landscape controls cancer transcriptional identity. *Cell* *184*, 334–351.e20. <https://doi.org/10.1016/j.cell.2020.11.045>.
45. Friebel, E., Kapolou, K., Unger, S., Núñez, N.G., Utz, S., Rushing, E.J., Regli, L., Weller, M., Greter, M., Tugues, S., et al. (2020). Single-Cell Mapping of Human Brain Cancer Reveals Tumor-Specific Instruction of Tissue-Invasive Leukocytes. *Cell* *181*, 1626–1642.e20. <https://doi.org/10.1016/j.cell.2020.04.055>.
46. Butturini, E., Boriero, D., Carcereri de Prati, A., and Mariotto, S. (2019). STAT1 drives M1 microglia activation and neuroinflammation under hypoxia. *Arch. Biochem. Biophys.* *669*, 22–30. <https://doi.org/10.1016/j.abb.2019.05.011>.

47. Hu, X., Herrero, C., Li, W.P., Antoniv, T.T., Falck-Pedersen, E., Koch, A.E., Woods, J.M., Haines, G.K., and Ivashkiv, L.B. (2002). Sensitization of IFN-gamma Jak-STAT signaling during macrophage activation. *Nat. Immunol.* 3, 859–866. <https://doi.org/10.1038/ni828>.
48. Smith, G.T., Radin, D.P., and Tsirka, S.E. (2022). From protein-protein interactions to immune modulation: Therapeutic prospects of targeting Neuropilin-1 in high-grade glioma. *Front. Immunol.* 13, 958620. <https://doi.org/10.3389/fimmu.2022.958620>.
49. Stuart, T., Butler, A., Hoffman, P., Hafemeister, C., Papalexi, E., Mauck, W.M., 3rd, Hao, Y., Stoeckius, M., Smibert, P., and Satija, R. (2019). Comprehensive Integration of Single-Cell Data. *Cell* 177, 1888–1902.e21. <https://doi.org/10.1016/j.cell.2019.05.031>.
50. Wolock, S.L., Lopez, R., and Klein, A.M. (2019). Scrublet: Computational Identification of Cell Doublets in Single-Cell Transcriptomic Data. *Cell Syst.* 8, 281–291.e9. <https://doi.org/10.1016/j.cels.2018.11.005>.
51. Tickle, T.T., Georgescu, C., Brown, M., and Haas, B. (2019). inferCNV of the Trinity CTAT Project. Klarman Cell Observatory (Broad Institute of MIT and Harvard). <https://github.com/broadinstitute/inferCNV>.
52. Stuart, T., Srivastava, A., Madad, S., Lareau, C.A., and Satija, R. (2021). Single-cell chromatin state analysis with Signac. *Nat. Methods* 18, 1333–1341. <https://doi.org/10.1038/s41592-021-01282-5>.
53. Slyper, M., Porter, C.B.M., Ashenberg, O., Waldman, J., Drokhyansky, E., Wakiro, I., Smillie, C., Smith-Rosario, G., Wu, J., Dionne, D., et al. (2020). A single-cell and single-nucleus RNA-Seq toolbox for fresh and frozen human tumors. *Nat. Med.* 26, 792–802. <https://doi.org/10.1038/s41591-020-0844-1>.
54. Blanco-Carmona, E. (2022). Generating publication ready visualizations for Single Cell transcriptomics using SCpubr. Preprint at bioRxiv, 2022. 2002.2028.482303. <https://doi.org/10.1101/2022.02.28.482303>.
55. Rainer, J. (2017). *EnsDb.Hsapiens.v86: Ensembl Based Annotation Package. R package version 2.99.0*.
56. Amemiya, H.M., Kundaje, A., and Boyle, A.P. (2019). The ENCODE Blacklist: Identification of Problematic Regions of the Genome. *Sci. Rep.* 9, 9354. <https://doi.org/10.1038/s41598-019-45839-z>.
57. Satpathy, A.T., Granja, J.M., Yost, K.E., Qi, Y., Meschi, F., McDermott, G.P., Olsen, B.N., Mumbach, M.R., Pierce, S.E., Corces, M.R., et al. (2019). Massively parallel single-cell chromatin landscapes of human immune cell development and intratumoral T cell exhaustion. *Nat. Biotechnol.* 37, 925–936. <https://doi.org/10.1038/s41587-019-0206-z>.
58. Mereu, E., Lafzi, A., Moutinho, C., Ziegenhain, C., McCarthy, D.J., Álvarez-Varela, A., Batlle, E., Sagar Grun, D., Grün, D., Lau, J.K., et al. (2020). Benchmarking single-cell RNA-sequencing protocols for cell atlas projects. *Nat. Biotechnol.* 38, 747–755. <https://doi.org/10.1038/s41587-020-0469-4>.
59. Hovestadt, V., Smith, K.S., Bihannic, L., Filbin, M.G., Shaw, M.L., Baumgartner, A., DeWitt, J.C., Groves, A., Mayr, L., Weisman, H.R., et al. (2019). Resolving medulloblastoma cellular architecture by single-cell genomics. *Nature* 572, 74–79. <https://doi.org/10.1038/s41586-019-1434-6>.
60. Kuleshov, M.V., Jones, M.R., Rouillard, A.D., Fernandez, N.F., Duan, Q., Wang, Z., Koplev, S., Jenkins, S.L., Jagodnik, K.M., Lachmann, A., et al. (2016). Enrichr: a comprehensive gene set enrichment analysis web server 2016 update. *Nucleic Acids Res.* 44, W90–W97. <https://doi.org/10.1093/nar/gkw377>.
61. Benjamini, Y., and Hochberg, Y. (1995). Controlling the False Discovery Rate: A Practical and Powerful Approach to Multiple Testing. *J. Roy. Stat. Soc. B* 57, 289–300.
62. Schubert, M., Klinger, B., Klünemann, M., Sieber, A., Uhlitz, F., Sauer, S., Garnett, M.J., Blüthgen, N., and Saez-Rodriguez, J. (2018). Perturbation-response genes reveal signaling footprints in cancer gene expression. *Nat. Commun.* 9, 20. <https://doi.org/10.1038/s41467-017-02391-6>.
63. Garcia-Alonso, L., Holland, C.H., Ibrahim, M.M., Turei, D., and Saez-Rodriguez, J. (2019). Benchmark and integration of resources for the estimation of human transcription factor activities. *Genome Res.* 29, 1363–1375. <https://doi.org/10.1101/gr.240663.118>.

STAR★METHODS

KEY RESOURCES TABLE

REAGENT or RESOURCE	SOURCE	IDENTIFIER
Antibodies		
Mouse monoclonal anti-CD74 (clone LN2)	BioLegend	Cat# 326802; RRID: AB_893401
Mouse monoclonal anti-CD163 (clone 10D6)	ThermoFisher Scientific	Cat# MA5-11458; RRID: AB_10982556
Mouse monoclonal anti-STAT1 (pY701) (clone 14/P-STAT1)	BD Biosciences	Cat# 612132; RRID: AB_399503
Rabbit monoclonal anti-EEF2 (EP880Y)	Abcam	Cat# ab75748; RRID: AB_1310165
Rabbit monoclonal anti-EEF1A1 (EPR9470)	Abcam	Cat# ab140632; RRID: AB_2687995
Mouse monoclonal anti-CSF1 (clone 2D10)	Sigma-Aldrich	Cat# MABF191
Rabbit polyclonal anti-CSF1R	Proteintech	Cat# 25949-1-AP; RRID: AB_2880306
Rat monoclonal anti- PIGF (clone #358905)	R&D	Cat# MAB2642; RRID:AB_10718412
Mouse monoclonal anti-NRP1 (clone 2H3F6)	Proteintech	Cat# 60067-1-Ig; RRID:AB_2150840
Biological samples		
Adult brain tumor tissue (fresh frozen)	Division of Experimental Neurosurgery, Department of Neurosurgery, University Hospital Heidelberg; Acıbadem Mehmet Ali Aydınlar University, School of Medicine, Department of Neurosurgery	N/A
Adult brain tumor tissue (FFPE)	Department of Pathology, Spedali Civili of Brescia; Department of Neuropathology, Heidelberg University Hospital	N/A
Chemicals, peptides, and recombinant proteins		
Streptavidin HRP	Vector	Cat# SA-5005
ImmPress HRP Universal Antibody (Horse Anti-Mouse/Rabbit IgG) Polymer detection Kit, Peroxidase	Vector	Cat# MP7500
Dako REAL™ Detection System, Alkaline Phosphatase/RED, rabbit/mouse,	Biocompare	Cat# K5005
MACH 4 Universal AP Polymer Kit	Biocare Medical	Cat# M4U536
Dako EnVision+ System-HRP Labeled Polymer anti-mouse or anti rabbit	Dako	Cat# K4001
Novolink™ Polymer Detection System (Novocastra™)	Leica Biosystems	Cat# RE7280-K
Critical commercial assays		
Chromium system using the Single Cell 3' Reagent Kit v3 or v3.1	10x Genomics	Cat# 1000121
Chromium Next GEM Single Cell ATAC Library & Gel Bead Kit v1.1	10x Genomics	Cat# 1000175
Deposited data		
Processed snRNA-seq and snATAC-seq data	This paper	GEO: GSE205771
TCGA LGG dataset	Genomics Data Common	https://portal.gdc.cancer.gov/projects/TCGA-LGG
Chinese glioma genome atlas (CGGA)	CGGA	http://www.cgga.org.cn/download.jsp#mRNAseq_693

(Continued on next page)

Continued

REAGENT or RESOURCE	SOURCE	IDENTIFIER
Software and algorithms		
Cellranger version 3.1	Cellranger v3.1 10x Genomics https://support.10xgenomics.com/	Cellranger v3.1 10x Genomics https://support.10xgenomics.com/
R (version 3.6.1–4.2.0)	https://www.r-project.org/	https://www.r-project.org/
Seurat (version 3.1.0–4.3.0)	Hao et al. ¹⁶ ; Stuart et al. ⁴⁹	https://satijalab.org/seurat/
scrublet version 0.2.1	Wolock et al. ⁵⁰	https://github.com/swolock/scrublet
inferCNV version 1.5.0	Tickle et al. ⁵¹	https://github.com/broadinstitute/inferCNV
Signac version 1.0	Stuart et al. ⁵²	https://stuartlab.org/signac/
LIANA version 0.1.10	Dimitrov et al. ²⁶	https://saezlab.github.io/liana/index.html
Other		
Code used in this study	This paper	https://github.com/gcapture/glioma-het
HTML book containing code used in this study	This paper	https://gcapture.github.io/glioma-het/

RESOURCE AVAILABILITY

Lead contact

Further information and requests for resources and reagents should be directed to and will be fulfilled by the lead contact, Şevin Turcan. (sevin.turcan@med.uni-heidelberg.de).

Materials availability

This study did not generate new unique reagents.

Data and code availability

- Processed single-nucleus RNA-seq and single-nucleus ATAC-seq data have been deposited at GEO (GSE205771) and are publicly available as of the date of publication. Accession numbers are listed in the [key resources table](#).
- All original code has been deposited at GitHub (<https://github.com/gcapture/glioma-het>) and GitHub pages (<https://gcapture.github.io/glioma-het/>), and is publicly available as of the date of publication. DOIs are listed in the [key resources table](#).
- Any additional information required to reanalyze the data reported in this work paper is available from the [lead contact](#) upon request.

EXPERIMENTAL MODEL AND STUDY PARTICIPANTS DETAILS

Human patient samples

A total of 14 fresh frozen archival IDH-mutant glioma samples (8 oligodendroglioma and 6 astrocytoma) were used for snRNA-seq and snATAC-seq. Additionally, 6 fresh frozen paired primary and recurrent samples (IDH-mutant astrocytoma) were used for snRNA-seq. Patient information and tumor characteristics are provided in Figures 1A and 4A. Fresh frozen samples were collected by the Division of Experimental Neurosurgery, Department of Neurosurgery, University Hospital Heidelberg, and the Department of Neurosurgery, Acıbadem Mehmet Ali Aydınlar University, School of Medicine, Istanbul. Samples used as validation cohort for immunohistochemistry were retrieved from the institutional databases of the Department of Pathology, Spedali Civili di Brescia, and the Department of Neuropathology, Heidelberg University Hospital. All patients provided written informed consent, in accordance with the Declaration of Helsinki. All samples were reviewed and received approval from the respective Institutional Review Boards and local authorities at the institutions where samples were originally collected. Specifically, the samples were approved by the Ethics Committee of Spedali Civili di Brescia, Institutional Review Board at the Medical Faculty of Acıbadem Mehmet Ali Aydınlar University, and the Ethics Committee of Heidelberg University.

METHOD DETAILS

Nucleus isolation from fresh frozen samples for snRNA-seq and snATAC-seq

Isolation of nuclei for snRNA-seq and snATAC-seq was performed as previously described.¹⁸ Briefly, fresh frozen tissue samples were cut into small pieces and homogenized using a Dounce homogenizer in EZ lysis buffer (Sigma Aldrich). Tissue was homogenized 20 times with pestle A and 20 times with pestle B. This was followed by centrifugation, filtration, and buffer-mediated gradient centrifugation to obtain pure single nuclei, which were then used for snRNA-seq and snATAC-seq.

Construction of libraries and generation of cDNA on the 10x genomics platform

Nuclei were counted using a hemocytometer, and their concentration adjusted as needed to meet the optimal range for loading on the 10x Chromium chip. The nuclei were then loaded into the 10x Chromium system using the Single Cell 3' Reagent Kit v3 or v3.1 (for snRNA-seq) and Chromium Next GEM Single Cell ATAC Library & Gel Bead Kit v1.1 (for snATAC-seq) according to the manufacturer's protocol. We aimed to load ~20,000 nuclei for each snRNA-seq run and ~10,000 nuclei for each snATAC-seq run. Following library construction, libraries were sequenced on the Illumina NovaSeq 6000 system.

Immunohistochemistry

2 μm sections were cut from formalin-fixed paraffin-embedded (FFPE) tissue samples provided by the Pathological Department of Spedali Civili of Brescia. Sections were de-waxed and rehydrated. Endogenous peroxidase activity was blocked with 0.3% H_2O_2 in methanol for 20 min. Antigen retrieval was performed using a microwave oven or a thermostatic bath in 1.0 mM EDTA buffer (pH 8.0) or in 1.0 mM Citrate buffer (pH 6.0). Sections were then washed in tris-buffered saline (TBS, pH 7.4) and incubated for 1 h with the specific primary antibody diluted in TBS 1% bovine serum albumin. The reaction was revealed by using Dako EnVision System-HRP Labeled Polymer anti-mouse or anti rabbit (Dako) or Novolink Polymer Detection System (Novocastra) followed by diaminobenzidine (DAB) as chromogen and hematoxylin as counterstain. For double immunohistochemistry, after completing the first immune reaction, the second one was revealed by using MACH4 Universal AP Polymer kit (Biocare Medical) followed by Ferangi Blue Chromogen kit (Biocare Medical) and nuclei were counterstained with hematoxylin. Images were acquired with a Nikon DS-Ri2 camera (4908 x 3264 full-pixel) mounted on a Nikon Eclipse 50i microscope equipped with Nikon Plan lenses (x10/0.25; x20/0.40; x40/0.65; x100/1.25) using NIS-Elements 4.3 imaging software (Nikon Corporation). The following primary antibodies were used: anti-Iba1 rabbit polyclonal (1:300, Wako), anti-CD74 mouse monoclonal (clone LN2) (1:100, BioLegend), anti-CD163 mouse monoclonal (clone 10D6) (1:50, ThermoFisher Scientific), anti-STAT1 (pY701) mouse monoclonal (clone 14/P-STAT1) (1:500, BD Biosciences), anti-EEF2 rabbit monoclonal (EP880Y) (1:250, Abcam), and anti-EEF1A1 rabbit monoclonal (EPR9470) (1:50, Abcam).

For IHC staining of human astrocytomas, 5 μm FFPE sections were obtained from the Department of Neuropathology, Heidelberg University Hospital, and stained with the following antibodies: mouse monoclonal CSF1 antibody (1:25, clone 2D10, Sigma-Aldrich #MABF 191), rabbit polyclonal CSF1R antibody (1:50, Proteintech #25949-1-AP), rat monoclonal human PIGF antibody (1:25, clone #358905, R&D #MAB 2642), mouse monoclonal NRP1 antibody (1:50, clone 2H3F6, Proteintech #60067-1-Ig). For CSF1, a pre-treatment steamer with Tris buffer pH 9.0 was performed followed by overnight incubation at room temperature. Detection was performed with ImmPress HRP, universal antibody (horse, anti-mouse) polymer detection kit, peroxidase (Vector # MP 7500). For CSF1R, we performed the same incubation and antigen retrieval as for CSF1 and detected with Dako REAL Detection System, Alkaline Phosphatase/RED, Rabbit/Mouse (Biocompare #K5005). For PIGF, pre-treatment with citrate buffer pH 6.0 was performed, followed by overnight incubation at room temperature. Detection was performed using the secondary antibody - biotinylated anti-rat IgG (Vector # BA-4001, 1:200) for 30' at 37°C, followed by HRP Streptavidin (1:200, Vector #SA-5004), for 30' at 37°C, and DAB (brown color) was used as a chromogen (ImmPress HRP Universal Antibody (Horse Anti-Mouse/Rabbit IgG) Polymer detection Kit, Peroxidase, (Vector # MP 7500). For NRP1 IHC, samples were pretreated with citrate buffer pH 6.0 and incubated for 2 h at 37°C, and detected using the Dako REAL Detection System, Alkaline Phosphatase/RED, rabbit/mouse, (Biocompare #K5005). Samples were imaged at 40x magnification with an Olympus VS.200 slide scanner (Olympus Corporation).

Single-nucleus RNA-seq data analysis

Raw sequencing data from all samples were processed using the *Cell Ranger* workflow (version 3.1.0) using a combined intron-exon reference generated following the manufacturer-provided "Generating a Cell Ranger compatible 'pre-mRNA' Reference Package" guidelines (<https://support10xgenomics.com/single-cell-gene-expression/software/pipelines/3.1/advanced/references>). In brief, the "pre-mRNA" reference was derived using "cellranger mkfastq" with a modified GTF annotation for which all introns were counted as exons, and therefore accounted for the count matrix generation. Subsequent data analysis was conducted using R (versions 3.6.1–4.2.0) package *Seurat*^{16,49} (version 3.1.0–4.3.0).

To remove doublets, a two-step quality control cutoff was applied, which involved the number of unique mRNAs per nucleus (Unique Molecular Identifier, UMI), the number of genes per nucleus, and the percentage of mitochondrial RNA in the nuclei. Nuclei with less than 1000 UMIs/nucleus or 500 genes/nucleus were removed from the analysis, according to pre-established best practices.⁵³ Nuclei with >5% of mitochondrial RNA were also excluded. To remove doublets, we used *scrublet v0.2.1*,⁵⁰ which assigns a doublet probability score to each nucleus, with a higher score indicating a higher likelihood of being a doublet. For each sample, individual inspection of the doublet scoring distribution was conducted to determine sample-specific cutoffs.

Data normalization was performed using Regularized Negative Binomial Regression (RNBR) as described in the *Seurat* package using *Seurat::SCTransform()* function. 3000 features with high variable expression across the nuclei were identified, which were used in a subsequent Principal Component Analysis (PCA) using the *Seurat::RunPCA()* function. To remove biases arising from different samples, integration based on the PCA embedding was computed using Harmony,¹¹ which generated a new dimensional reduction embedding. For this, the most relevant principal components (PCs) were used, selected based on the elbow plot showcasing the standard deviations comprised accounted in each PC. Further dimensional reduction using Uniform Manifold Approximation and Projection (UMAP) is performed to visualize the cells. The UMAPs and clusters were generated using the *Seurat::FindNeighbors()*, *Seurat::FindClusters()*, and *Seurat::RunUMAP()* functions. All plots shown in figures have been generated using SCpubr⁵⁴ and

ggplot2. In brief, dimensional reduction plots were generated using *SCpubr::do_DimPlot()*, feature plots using *SCpubr::do_FeaturePlot()*, dot plots using *SCpubr::do_DotPlot()*, bar plots using *SCpubr::do_BarPlot()*, violin plots using *SCpubr::do_ViolinPlot()* and heatmaps using *SCpubr::do_ExpressionHeatmap()*, *SCpubr::do_EnrichmentHeatmap()*, *SCpubr::do_CorrelationPlot()*, *SCpubr::do_PathwayActivityPlot()*, *SCpubr::do_TFActivityPlot()*, *SCpubr::do_MetadataPlot()*, *SCpubr::do_DiffusionMapPlot()*.

Determination of malignant cells

To distinguish between tumor cells and tumor microenvironment we inferred copy number variation (CNV) signatures, using the R package *inferCNV* v.1.5.0.⁵¹ Since 10x snRNA-seq data is very sparse, we opted to use meta-cells instead of single cells to increase the overall sensitivity. Meta-cells are generated computationally by aggregating the expression values of five cells from the same cluster. As the microglia/macrophage and the oligodendrocyte populations were easily distinguished by marker gene inspection (*PTPRC*, *CD163* and *CD14* for microglia/macrophages, and *MBP* and *MOG* for oligodendrocytes), these were used as references. Cells were classified as either tumor cells or tumor microenvironment (TME) cells based on their CNV profiles. For oligodendrogliomas, we used a combination of 1p/19q co-deletion status and enrichment for previously published lists of marker genes,⁴ whereas for astrocytomas, CNVs were not clearly recovered by *inferCNV* and samples did not share the same CNV event. For astrocytoma samples, tumor cells were characterized based on the enrichment of marker gene lists.

Deconvolution

To deconvolute the TCGA and CGGA bulk RNA sequencing data, we used the single-cell dataset generated in this study as a reference. Deconvolution was performed using SPOTlight¹² version 1.0.3. To train the model, we used all cell populations from our snRNA-seq data. Marker genes for each cell type were identified using the Seurat function *Seurat::FindAllMarkers()* with the following parameters: *test.use* = "MAST", *min.pct* = 0.5, *logfc.threshold* = 0.5, *only.pos* = TRUE. We then used the *avg_log2FC* as the weights to initialize the W NMF matrix for each topic prior to initialization.

Single-nucleus ATAC-seq data analysis

snATAC-seq data analysis was carried out using the R (version 3.6.1) package *Signac* (version 1.0).⁵² Peak count matrices were generated using Cell Ranger ATAC version 1.2, with each row representing a chromatin region and each column representing a different cell. To merge multiple datasets together, the standard protocol from *Signac* was followed. For peak annotation and further downstream analysis, we used the GRCh38 annotation retrieved from *EnsDb.Hsapiens.v86* R package.⁵⁵ To assess the quality of the nuclei, we defined the following variables: total number of fragments in the nuclei, the percentage of reads falling on peaks, the percentage of reads falling in blacklist regions,⁵⁶ the chromosome binding pattern referred to as "nucleosome signal" computed with *Signac::NucleosomeSignal()* and the enrichment of the peaks in transcription start sites (TSS) computed with *Signac::TSSEnrichment()*. We then removed the nuclei for which a) total number of fragments were lower than 3000 and/or higher than 20,000, b) the percentage of reads in peaks were lower than 15% or reads in blacklist regions were higher than 5%, c) nucleosome signal was higher than 10%, and d) TSS enrichment was lower than 2%.

To normalize and perform linear dimensionality reduction, we used term frequency-inverse document frequency (TF-IDF) normalization with *Signac::RunTFIDF()*, followed by feature selection with *Signac::FindTopFeatures()* paired with "q0" as argument to select all peaks. Then, we ran singular value decomposition (SVD) on the TD-IDF matrix, with reduction name "LSI". The first LSI component captured technical variation corresponding to sequencing depth. Therefore, we excluded it from downstream analyses.

We then computed non-linear dimensionality reduction of the data with *Seurat::RunUMAP()* and clustered the cells using *Seurat::FindNeighbors()* and *Seurat::FindClusters()* under default parameters, yielding 30 components for oligodendroglioma and astrocytoma samples.

To estimate the gene activity for each gene based on their associated accessibility, we used *Signac::GeneActivity()* and normalized the resulting assay data with *Seurat::SCTransform()*, as gene activity intends to resemble an snRNA-seq experiment. To further integrate the results with our snRNA-seq datasets, we identified shared correlation patterns between the normalized gene activity assay from snATAC-seq data and the normalized count data assay from snRNA-seq data. For this, shared anchors between both datasets are identified, which correspond to matching patterns between the two modalities. As the snRNA-seq dataset is already annotated, nuclei with shared anchors in the snATAC-seq data will receive the same annotation.⁴⁹ This is computed with *Signac::FindTransferAnchors()* and *Signac::TransferData()*, following *Signac*'s standard protocol for multimodal integration. To further remove patient-specific effects, we integrated the snATAC-seq datasets using Harmony with *harmony::RunHarmony()*, and recomputed the UMAP embedding using the same number of LSI components as previously.

Next, to infer gain or loss of accessibility of peaks sharing the same transcription factor (TF) motifs, we used *Signac::AddMotifs()*, a wrapper from chromVAR version 1.14.0⁵⁷ following *Signac* protocol for motif analysis. This returns a motif activity score per nucleus. To compare accessibility and expression we computed differentially accessible peaks between the identities retrieved after label transfer using *Seurat::FindAllMarkers()* with default parameters, filtered by p value ≤ 0.05 and annotated to their closest gene with *Signac::ClosestFeature()*. Differentially enriched motifs across tumor populations were correlated using Pearson's correlation and the score is displayed as a heatmap for both tumor subtypes. Top differentially enriched motifs across tumor populations are displayed as a heatmap.

Single nucleus RNA-seq data analysis of the tumor microenvironment

snRNA-seq data analysis of the tumor microenvironment (TME) was carried out using the R (version 4.1.0) package *Seurat*¹⁶ (version 4.0.3). To obtain a finer-grained resolution of cell states, we extracted TAM cells from the integrated snRNA-seq dataset, and recomputed the integration workflow, downstream analyses and clustering: TAMs were log-normalized using a scale factor of $1e^4$. Then, we selected the top 3000 variable genes and integrated using *Harmony* (version 0.1.0) and computed a new UMAP embedding. New clusters were called based on the top 30 principal components with a resolution of 0.7 using the Louvain algorithm. Marker genes were retrieved by differential expression analysis of each microglia subpopulation against the rest using Wilcoxon Rank-Sum test, selecting the genes that presented an average of 0.25-fold difference (\log_2 scale) between the two groups (adjusted p value ≤ 0.05). For cluster annotation, we used *matchScore2*⁵⁸ R package and *SCpubr::do_FeaturePlot()*.

Non-negative matrix factorization (NMF) of primary samples

To unveil the major cell states within our samples, we applied Non-Negative Matrix Factorization (NMF) as described.⁵⁹ NMF was performed individually to the tumor cells in each patient. Nuclei from the TME were excluded from the analysis. The normalized count matrix was scaled and centered. For each patient, NMF was computed with factorization ranks ranging from two to ten, resulting in computed NMF programs for each iteration and individual patient. Each NMF program consists of a vector of NMF scores for each gene in the count matrix. Higher NMF scores indicate a stronger contribution of the gene to the NMF program. The top 30 scored genes in each signature were selected, with prior exclusion of the mitochondrial genes. Next, to assess the overall enrichment of each nucleus to the NMF program, a scoring system was applied. For each gene in the NMF program, a control set of genes was defined as the top 100 genes closest in expression. This was achieved by first computing a vector of averaged expression values for each gene across all nuclei. Then, genes with similar expression patterns were selected by computing the absolute value of the difference between the average expression value of the gene across all the nuclei and the vector of averaged scores. After sorting these values, the top 100 genes closest to zero, excluding the first one (which is zero, corresponding to the given gene itself), were selected. Once the reference set is generated, for each nucleus, the difference in averaged expression between the given gene and the averaged expression values for the reference set of genes is calculated. This returns a vector of the difference in averaged expression values between the gene and the control set per nucleus, multiplied by each of the genes in the NMF program. This matrix, containing each individual nucleus as columns and each gene in the NMF program as rows, is transformed into a vector by averaging the values in each of the columns (i.e., genes). This gave the average score across all genes for each nucleus, indicating how much each nucleus is enriched in the given set of genes in the NMF program.

To detect similarities in the scoring of the NMF signatures across nuclei, Pearson's correlation was computed on a matrix formed by the different scoring of the NMF program. This resulted in distinct groups of NMF programs highly similar to each other in terms of how enriched each nucleus in the tumor bulk is in the gene sets forming these programs, referred to as NMF metaprograms. This process was repeated for each value of rank computed, and the one that returned the clearest and highest number of NMF metaprograms was selected. To define the top 30 genes driving each of the NMF metaprograms, an almost identical scoring approach as the previously described was applied, using all the unique genes in the NMF programs contained in the NMF metaprogram, but averaging the final scores by rows (i.e., nuclei) instead. This returns a vector with a score for each gene, indicating how much weight each gene carries in the NMF metaprogram across all nuclei. The top 30 genes with the highest scores were selected. Each group of genes was functionally characterized using the *enrichR*⁶⁰ package, which computes the enrichment of the set of genes in different term databases, such as GO, KEGG, etc. *Seurat* enrichment scores were computed with the function *Seurat::AddModuleScore()* for all the nuclei to assess how the enrichment on the NMF metaprograms is distributed across the tumor cells of the integrated dataset.

Assigning meta-programs to cells

To avoid defining tumor bulk populations based on manually selected cutoffs of enrichment scores, especially when the enrichment patterns occur in a gradient fashion rather than specific clusters, we developed a permutation testing method to statistically assign cells to a given NMF metaprogram. The empirical distribution is defined as the vector of enrichment scores for a list of genes (i.e., NMF metaprogram), and the null distribution is generated by permuting the expression values of each of the genes queried for enrichment across the nuclei, thereby disrupting any enrichment pattern arising from the combined expression of the entire set of genes. The resulting vector of enrichment scores represents individual permuted scores that represent what the enrichment scores for the set of genes would be if the list of genes were not correlated, defined as the null distribution. This method assumes differential gene expression across the nuclei; otherwise, permuting the expression values would not have the desired effect. To determine whether a nucleus is statistically enriched for the given list of genes, we compute the fraction of values in the null distribution that are higher than the enrichment score for the selected nucleus plus one, both in the numerator and denominator, thus avoiding infinite values (representing the p value). Therefore, the number of computed permutations in the null distribution will determine the lowest possible p value. For this, a million permutations are performed to achieve a minimum possible p value of $1e^{-6}$, and p values are corrected for multiple testing using Benjamini-Hochberg method⁶¹ (Benjamini and Hochberg, 1995), generating adjusted p values. Nucleus for which the adjusted p value is lower than 0.05 (FDR = 5%) are selected as statistically enriched in the list of genes provided. However, if the same set of nuclei is queried for different list of genes, the choice of FDR should be further corrected by the number of comparisons to avoid inflation of the alpha error. This is achieved by dividing the desired FDR by the total number of

comparisons performed to the same group of nuclei. This step is particularly important if nuclei are being labeled based on a combination of results (i.e., being enriched for a given list of genes and not for the others).

Pathway enrichment analysis and transcription factor-target interactions

To infer pathway activity from normalized gene expression data for 14 pre-defined pathways (Androgen, Estrogen, EGFR, Hypoxia, JAK-STAT, MAPK, NFkB, PI3K, p53, TGF β , TNF α , Trail, VEGF, and WNT) we used *PROGENy*⁶² in combination with *decoupleR*.¹³ To ensure comparability across both subtypes, we merged the raw counts for both subtypes and re-normalized the data using RNBR. The normalized counts were then used as input for *PROGENy*, which returns a *Seurat* object with an independent score for each cell. Similar to *PROGENy*, we used the same approach to compute TF-target interactions with *DoRothEA*⁶³ in combination with *decoupleR*.¹³ We applied *DoRothEA* in combination with the statistical method *VIPER* on matrices of single nuclei RNA-seq samples (genes in rows and either bulk samples or single cells in columns) containing normalized gene expression scores scaled gene-wise to a mean value of 0 and standard deviation of 1 or on contrast matrices (genes in rows and summarized perturbation experiments into contrasts in columns) containing log fold changes (FC). In the case of single-nuclei RNA-seq sample analysis, the contrasts were built based on TF activity matrices yielding the change in TF activity (perturbed samples - control sample) summarized as logFC. TFs with less than four targets listed in the corresponding gene expression matrix were discarded from the analysis. *VIPER* provides a normalized enrichment score (NES) for each TF which we consider as a metric for the activity. We used the R package *viper* (version 1.17.0) to run *VIPER* in combination with *DoRothEA*.

Inferring receptor-ligand interactions

To assess receptor-ligand interactions between the two major tumor populations (OPC-like and astro-like cells) and the newly defined TAM subpopulations, we used *LIANA* version 0.1.10²² with five different methods: 'natmi', 'connectome', 'logfc', 'sca' and 'cellphonedb', and filtered out the interactions to those with p value (aggregated consensus rank) ≤ 0.05 . We then selected the most relevant interactions and plotted them as a dot plot.

QUANTIFICATION AND STATISTICAL ANALYSIS

Statistics

GraphPad Prism 9 software was used for statistical analysis of the IHC data. Unpaired two-sided *t* tests were used to determine statistical significance (p values < 0.05). For IHC, expression levels of markers were semi-quantitatively scored on representative tumor regions based on percentage [score ranges: 0 (no expression), 1 (0–5%, moderate intensity), 2 (6–29%, moderate intensity), 3 (30–69%, high intensity), 4 ($\geq 70\%$, high intensity)] of immunoreactive (IR) cells.

Cell Reports Medicine, Volume 4

Supplemental information

**Tumor heterogeneity
and tumor-microglia interactions
in primary and recurrent IDH1-mutant gliomas**

Enrique Blanco-Carmona, Ashwin Narayanan, Inmaculada Hernandez, Juan C. Nieto, Marc Elosua-Bayes, Xueyuan Sun, Claudia Schmidt, Necmettin Pamir, Koray Özduman, Christel Herold-Mende, Francesca Pagani, Manuela Cominelli, Julian Taranda, Wolfgang Wick, Andreas von Deimling, Pietro Luigi Poliani, Michael Rehli, Matthias Schlesner, Holger Heyn, and Şevin Turcan

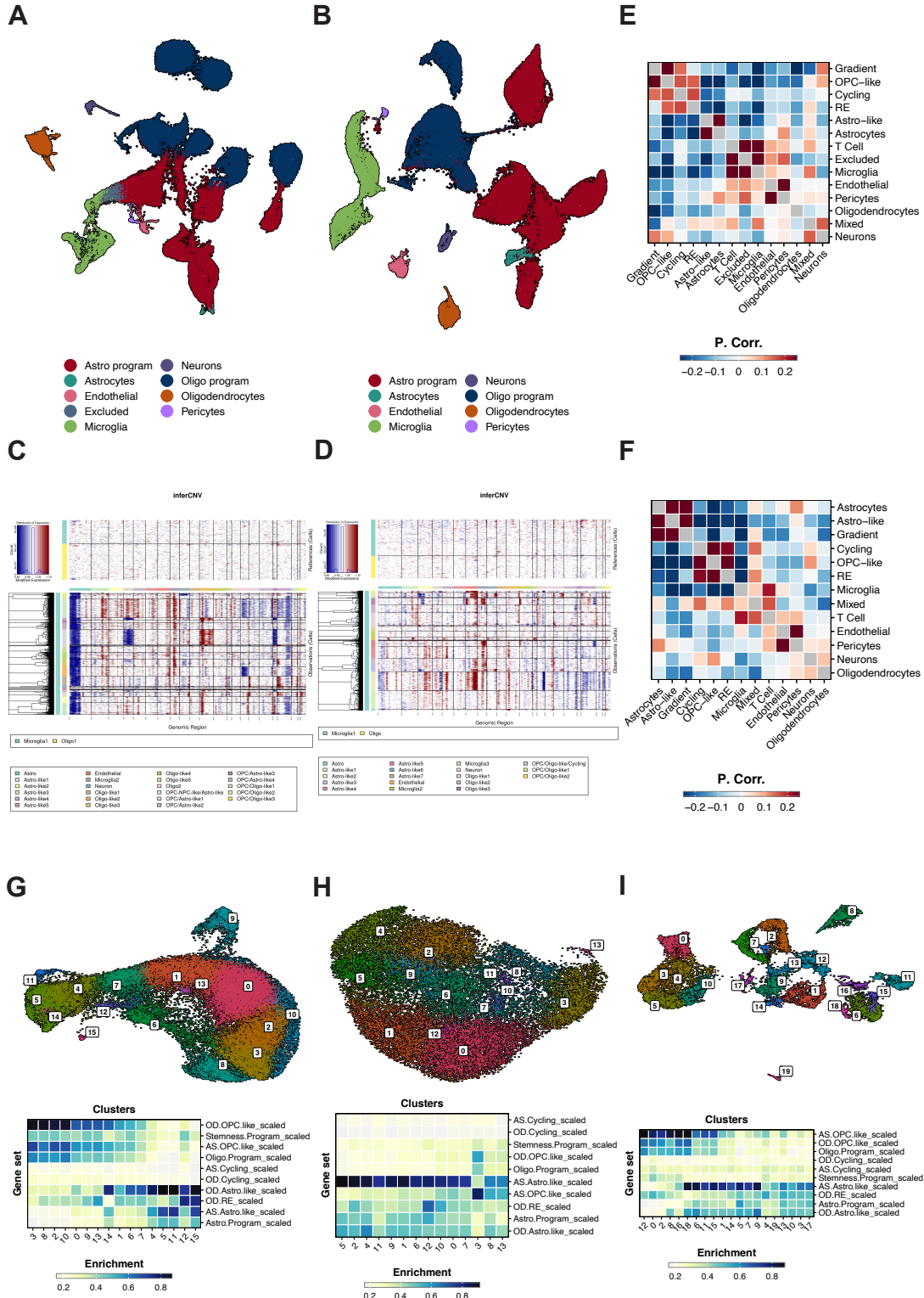


Figure S1. UMAP of merged snRNA-seq data, inferred CNVs, and characterization of the gradient cluster. Related to Figure 1 and STAR methods. (A and B) UMAP and initial cluster assignment for merged snRNA-seq data from oligodendroglioma (A) and astrocytoma (B). Colors represent assigned cell types. UMAP1, x-axis; UMAP2, y-axis. (C and D) Heatmap of CNV profiles inferred from snRNA-seq from oligodendrogliomas (C) and astrocytomas (D). Each row corresponds to a nucleus, ordered by initial cluster labeling from merged data. Red indicates gain and blue indicates loss. (E and F) Correlation heatmap depicting expression similarities (Pearson's correlation) between the highly variable genes in tumor and TME populations of oligodendrogliomas (E) and astrocytomas (F). (G, H, and I) Gradient subset of the tumor subpopulation for primary oligodendrogliomas (G), primary astrocytomas (H) and paired astrocytomas (I). Cells are re-normalized, and dimensional reduction is computed, generating a new UMAP embedding and clustering (top). For each cluster, enrichment scores for the NMF metaprograms and the programs described in *Venteicher, et al.* are computed, and displayed as an enrichment heatmap (bottom). UMAP1, x-axis; UMAP2, y-axis.

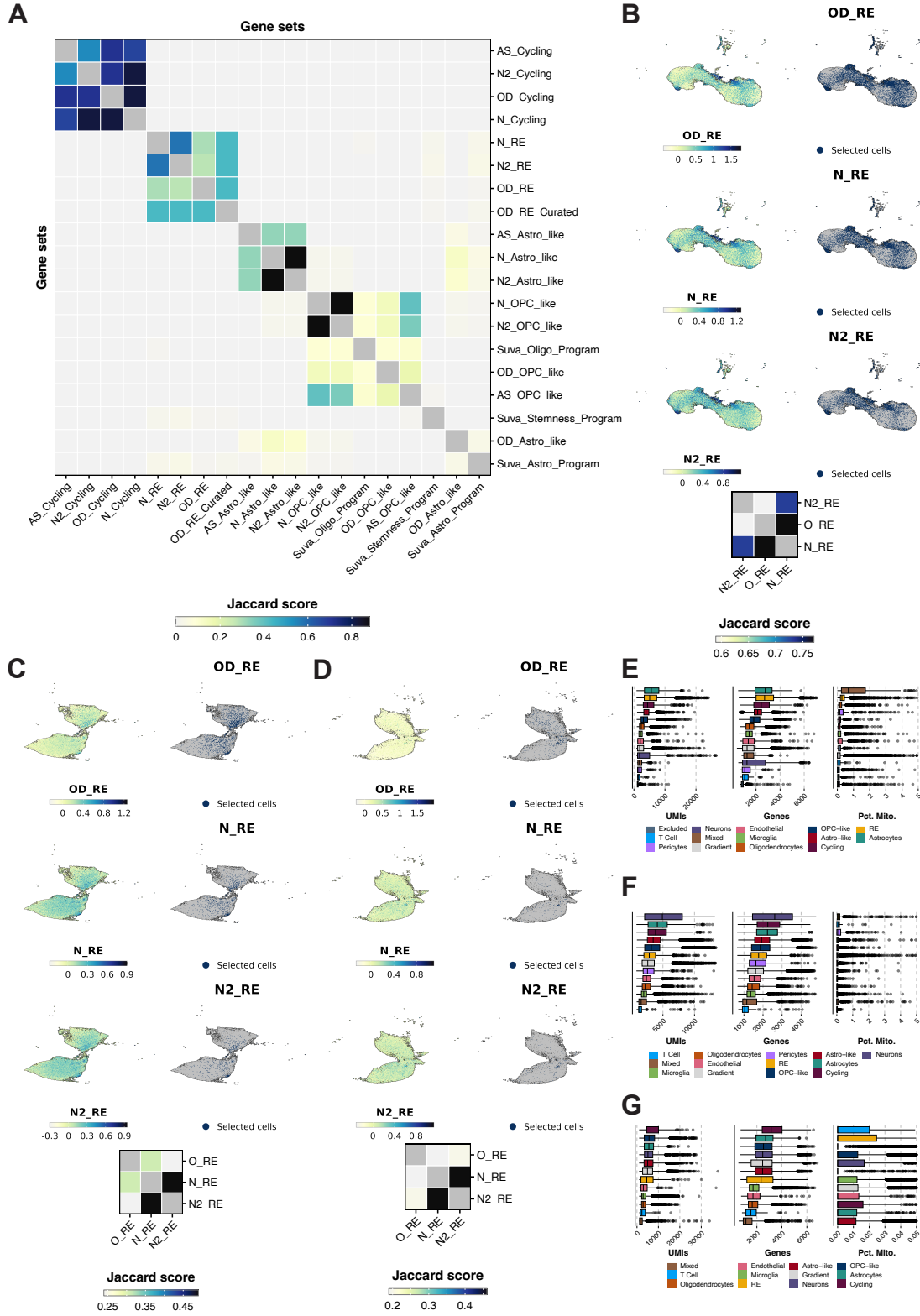


Figure S2. Characterization of the NMF programs, and quality control for all clusters in snRNA-seq datasets. Related to Figures 1 and 4, and STAR methods. (A) Correlation matrix depicting the Jaccard similarities between the NMF metaprograms and the Astrocyte-like, Oligo-like and Stemness programs in *Venteicher, et al.* Three iterations of NMF have been computed, represented by the prefixes in the metaprograms name: OD_ and AS_ metaprograms belong to the first iteration, containing ribosomal genes. N_ metaprograms correspond to the metaprograms retrieved prior removal of ribosomal genes. N2_ metaprograms refer to the metaprograms retrieved prior removal of ribosomal genes and exclusion of sample *IDH ACB AD 540*, which has a significantly higher proportion of RE. OD_RE_Curated metaprogram contains the genes present in all three RE metaprogram iterations. (B-D) Jaccard similarities depict a high consensus between all homologue iterations of NMF metaprograms. Permutation testing selection method based on the enrichment scores for the three different RE metaprograms retrieved including ribosomal genes (*OD RE*), excluding them (*N RE*) and excluding the sample with the highest proportion of RE cells, *IDH ACB AD 540* (*N2_RE*) is used in the tumor cells of oligodendrogliomas (B) and astrocytomas (C) and paired astrocytomas (D). Jaccard similarities between the selected cells for each of the NMF metaprograms is shown (bottom). Enrichment scores are shown on the left and the selected cells on the right. UMAP1, x-axis; UMAP2, y-axis. (E-G) Boxplots showing from left to right, distribution of UMIs per cell, genes per cell and percentage of mitochondrial RE per cell are shown for primary oligodendroglioma (A), primary astrocytoma (B) and paired astrocytoma (C) tumors.

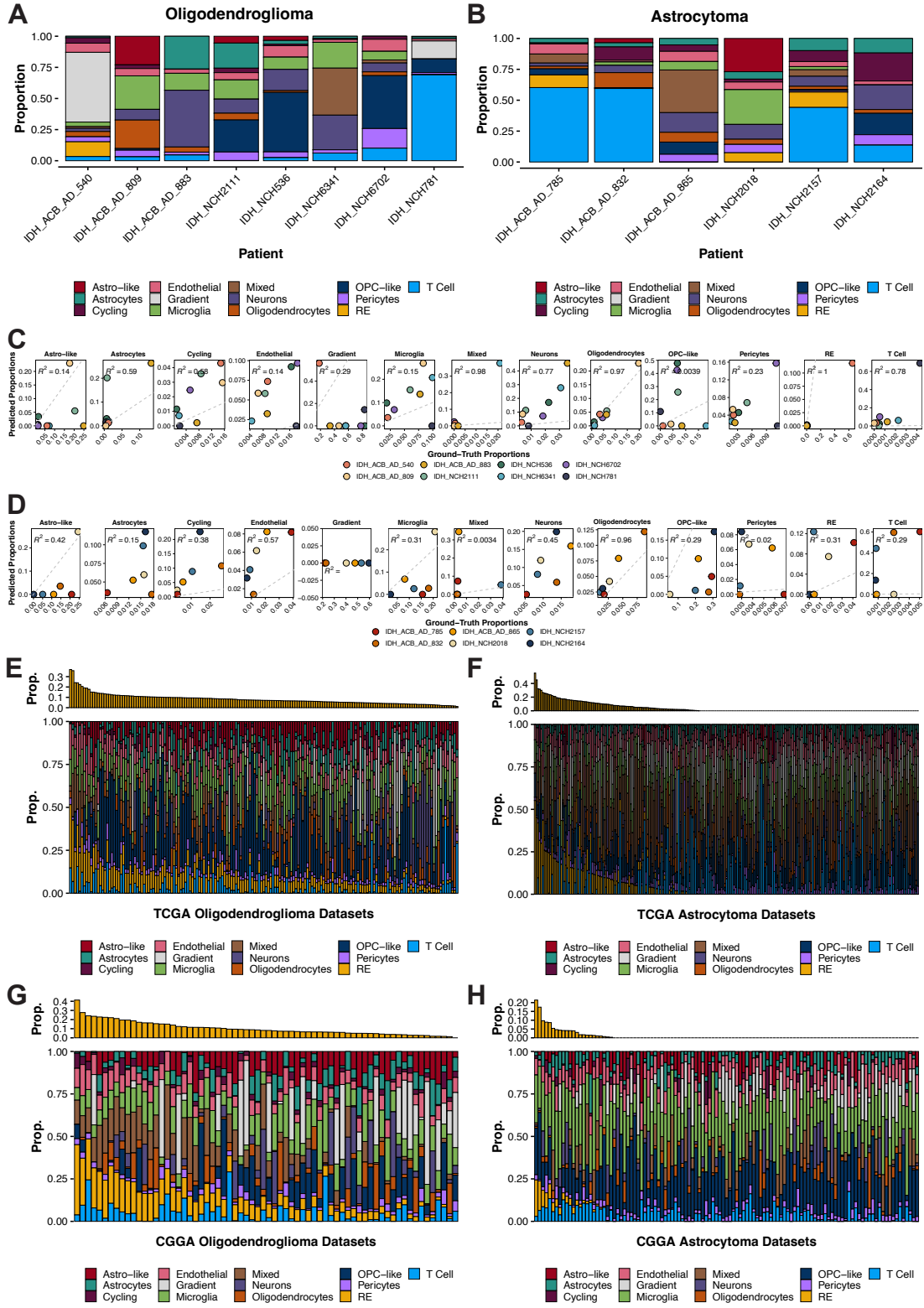


Figure S3. Deconvolution of publicly available bulk glioma RNA-seq datasets (TCGA and CGGA). Related to Figure 1 and STAR methods. (A) Deconvolution of primary samples (pseudobulk) for oligodendroglioma (OD). **(B)** Deconvolution of primary samples (pseudobulk) for astrocytoma (AS). **(C)** Correlation analysis between predicted proportions (SPOTlight) ground-truth proportions (primary samples) in OD. **(D)** Correlation analysis between predicted proportions (SPOTlight) ground-truth proportions (primary samples) in AS. **(E)** SPOTlight results of TCGA (the Cancer Genome Atlas) OD IDH mutant glioma cohort (on top, proportion of RE, ordered. on the bottom, all proportions ordered also by descending RE). **(F)** SPOTlight results of TCGA AS IDH mutant glioma cohort (on top, proportion of RE, ordered. on the bottom, all proportions ordered also by descending RE) **(G)** SPOTlight results of CGGA OD (Chinese Glioma Genome Atlas) IDH mutant glioma cohort (on top, proportion of RE, ordered. on the bottom, all proportions ordered also by descending RE). **(H)** SPOTlight results of CGGA AS IDH mutant glioma cohort (on top, proportion of RE, ordered. on the bottom, all proportions ordered also by descending RE).

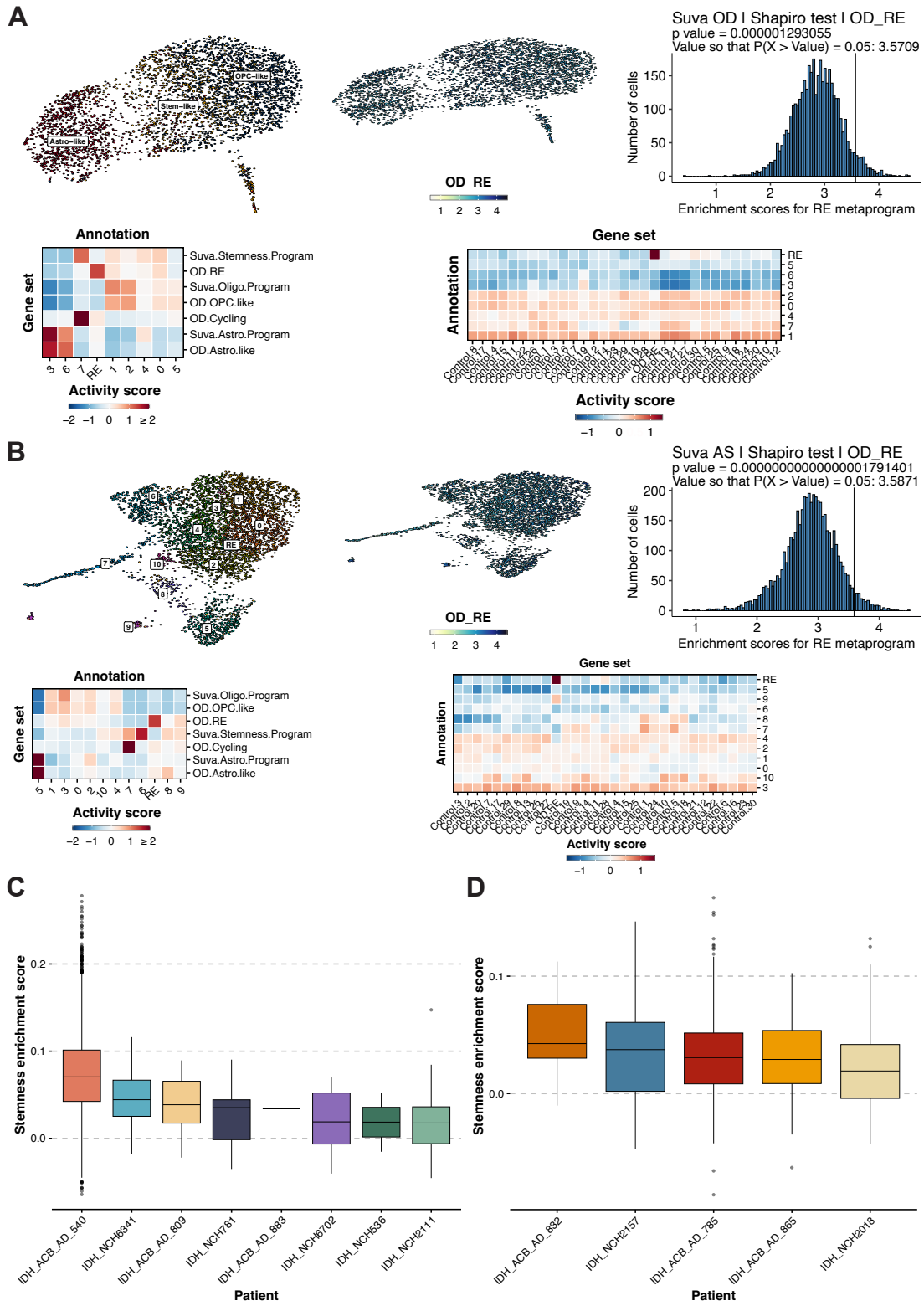


Figure S4. The RE metaprogram in publicly available scRNA-seq datasets from IDH mutant gliomas, and the stemness score per patient in snRNA-seq dataset from oligodendrogliomas and astrocytomas. Related to Figure 1 and STAR methods (A and B) Datasets from publicly available oligodendrogliomas³ (A) and astrocytomas⁴ (B) are used to determine the presence of the RE metaprogram. UMAP representation of the tumor cells is shown together with the enrichment scores for the RE metaprogram (top, left and middle). The distribution of enrichment scores is tested for normality using Shapiro test (top-right) and the value so that the probability of finding an enrichment score higher is 5% is used to select the RE population. The activity of the different cell clusters and the RE population towards the NMF metaprograms and the publicly available programs⁴ is computed by using *decoupleR*. Activity scores are scaled and centered and displayed grouped by cell population (bottom-left). To query the robustness of RE metaprogram towards the RE population, 50 different gene sets of equal size are generated by randomly selecting genes in the same bin of expression as the genes in the RE metaprogram. Activity scores are computed, scaled, and centered, and displayed grouped by cell population. UMAP1, x-axis; UMAP2, y-axis. (C and D) Box plots of the enrichment score for the stemness program in *Venteicher, et al* per patient in oligodendroglioma (C) and astrocytoma (D).

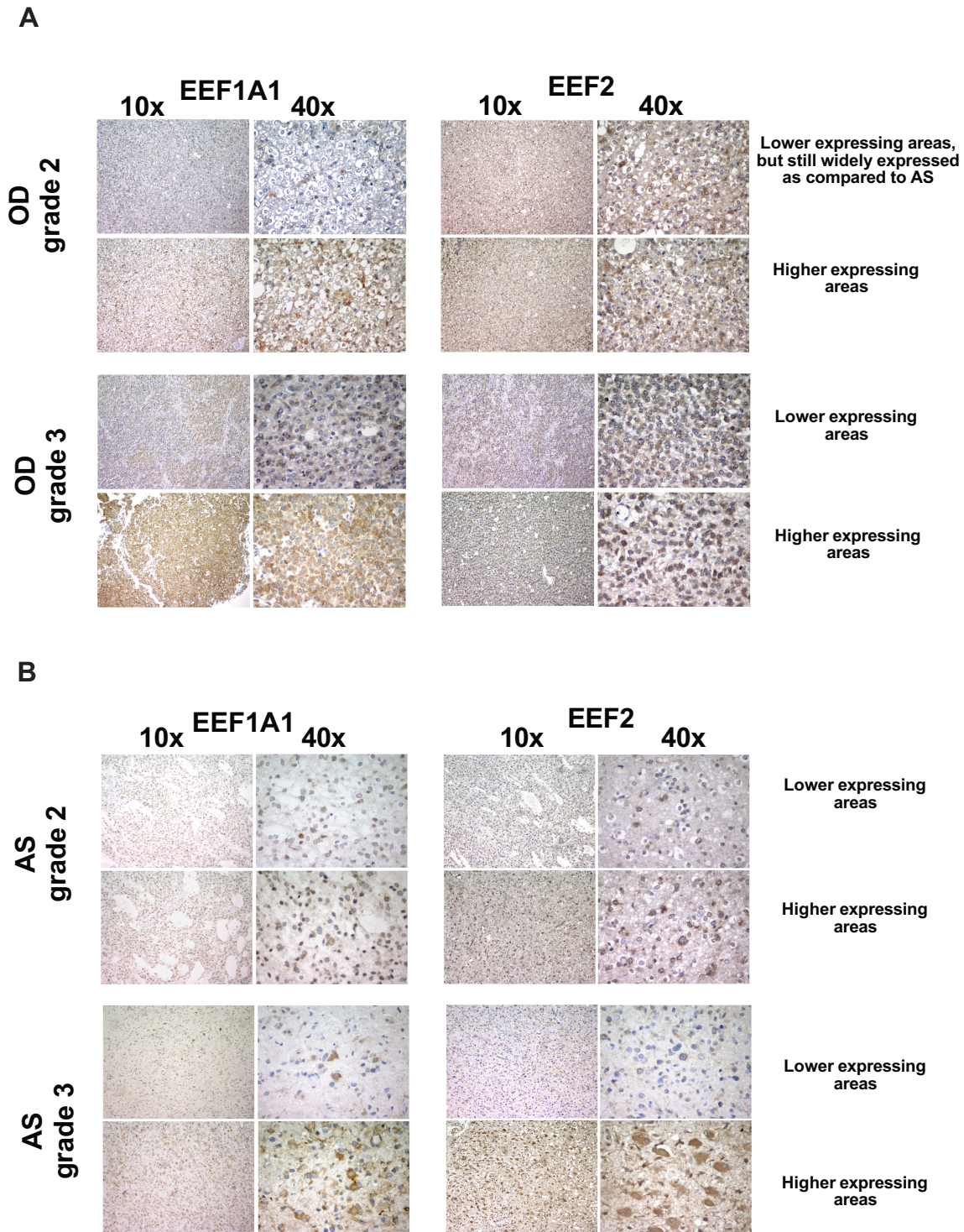


Figure S5. Representative IHC staining for EEF1A1 and eEF2 in IDH mutant gliomas. Relate to Figure 1. (A, B) Representative IHC staining for EEF1A1 and eEF2 population marker genes in grade 2 (top) and grade 3 (bottom) oligodendrogliomas (A) and astrocytomas (B). Images are shown as 10x and 40x to show the spatial distribution of EEF1A1 and EEF2 in both tumor types. *OD*, oligodendroglioma; *AS*, astrocytoma.



Figure S6. Reference mapping using Azimuth. Related to Figure 1 and STAR methods. (A, B) Tumor subsets for primary oligodendrogliomas (A) and primary astrocytomas (B) are mapped onto the *fetus reference* from Azimuth. (C, D) Tumor subsets for primary oligodendrogliomas (C) and primary astrocytomas (D) are mapped onto the *GBmap* reference. For each variation, original UMAP embedding is shown on the top-left, cells mapped onto the reference UMAP on the top-right, cells re-labelled based on the reference mapping on the bottom left and a bar plot of the proportions of the new annotation per each original tumor entity on the bottom-right. UMAP1, x-axis; UMAP2, y-axis.

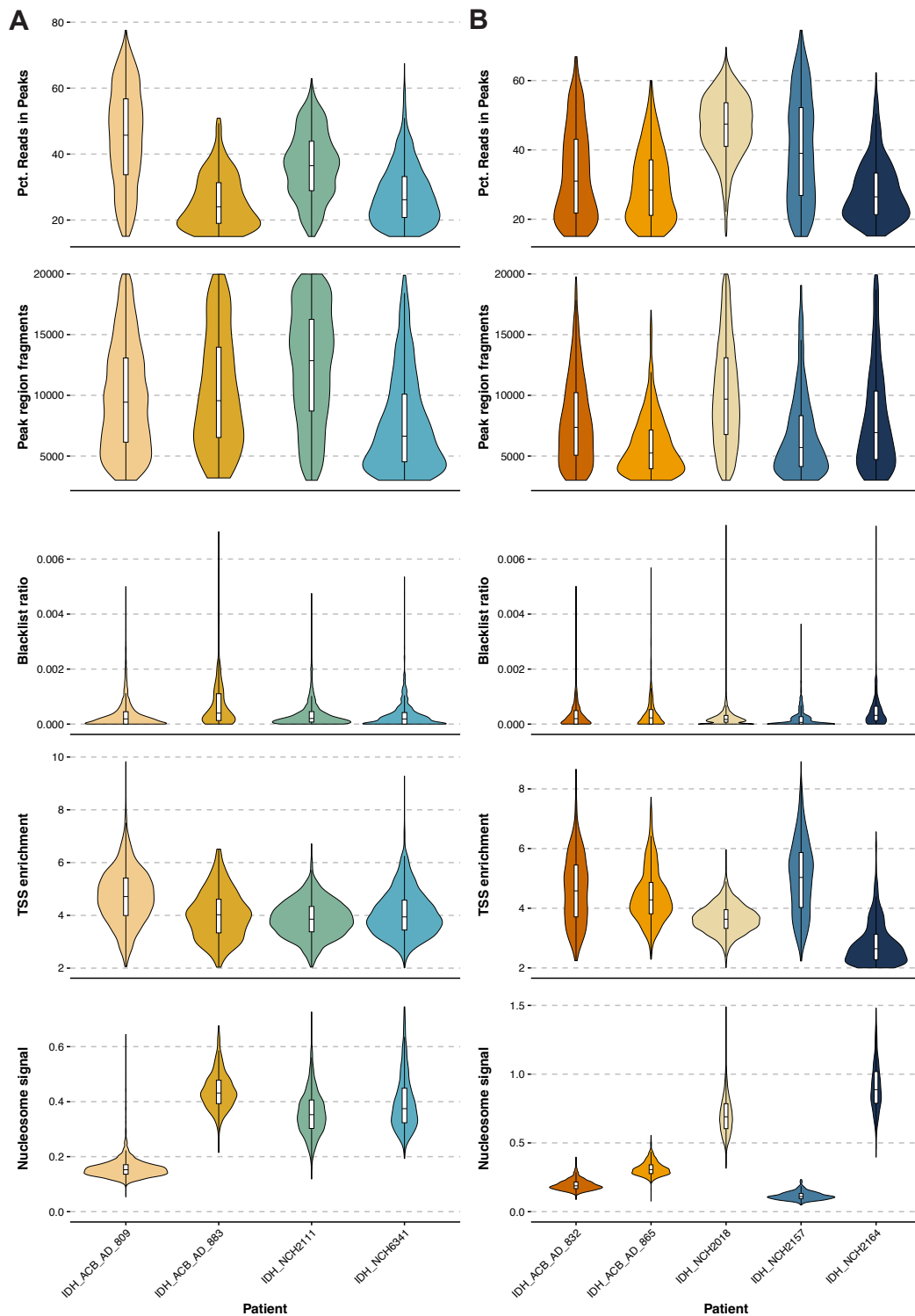


Figure S7. Quality control metrics of snATAC-seq data. Related to Figure 2. (A and B) Quality control metrics of snATAC-seq data generated from oligodendrogliomas (A) and astrocytomas (B). From top to bottom: Percentage of reads in peaks; peak region fragments; blacklist ratio; transcription start site (TSS) enrichment score and nucleosome signal.

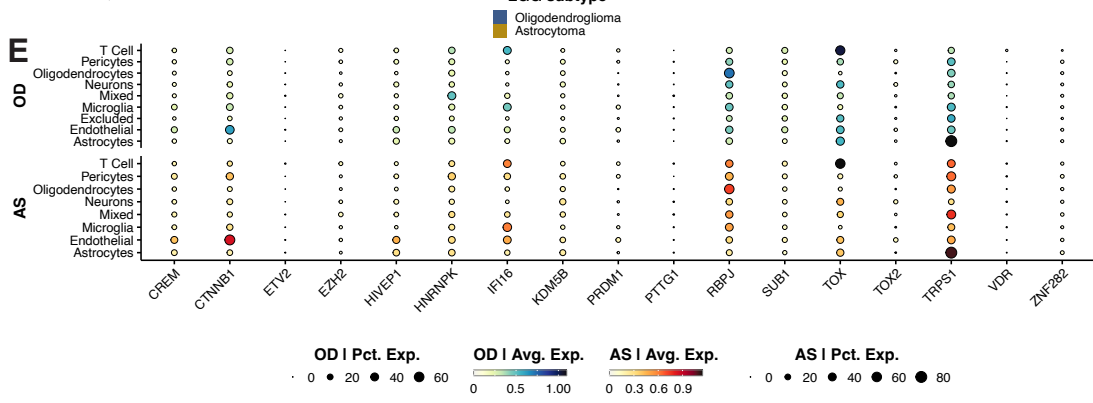
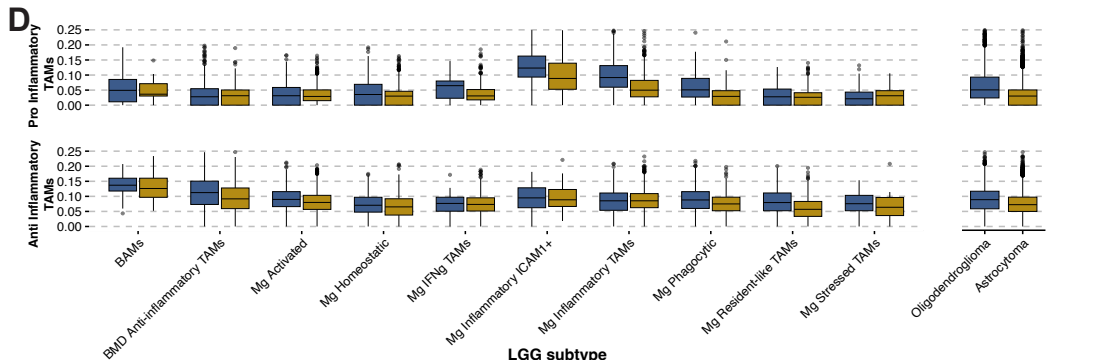
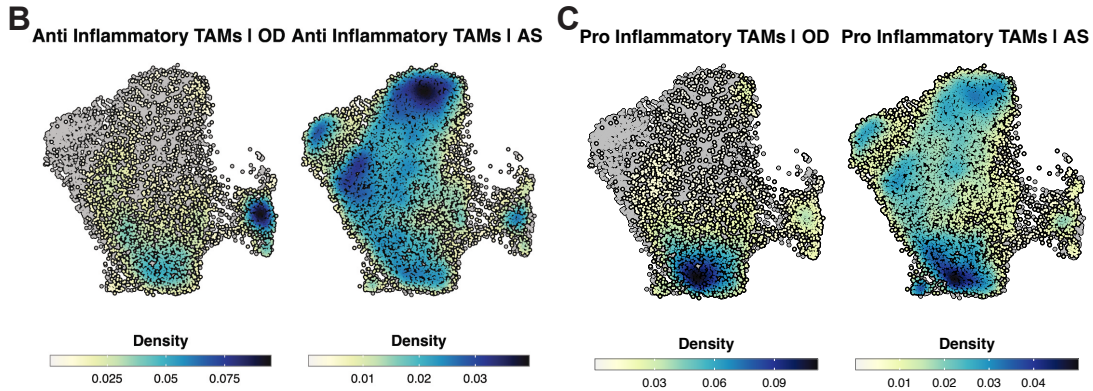
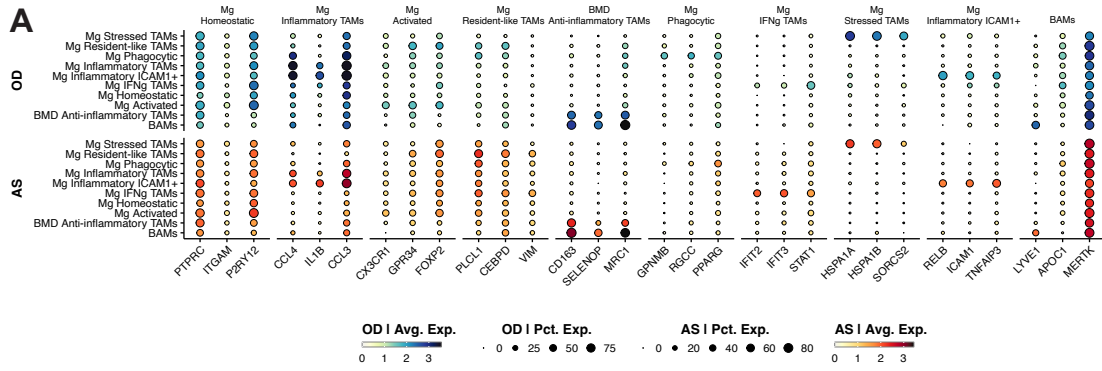
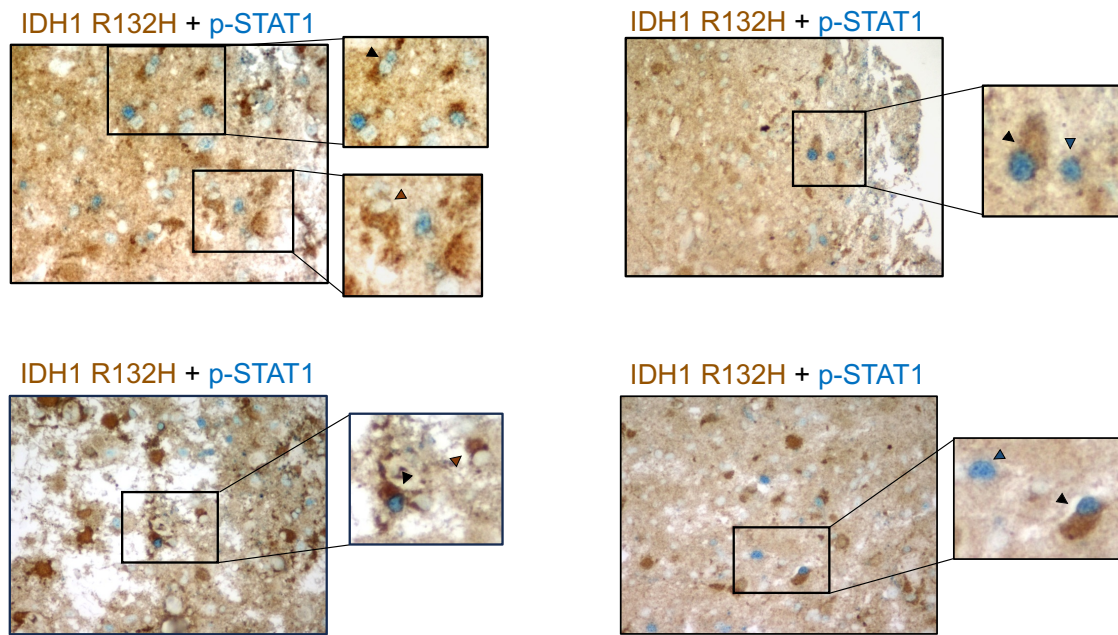
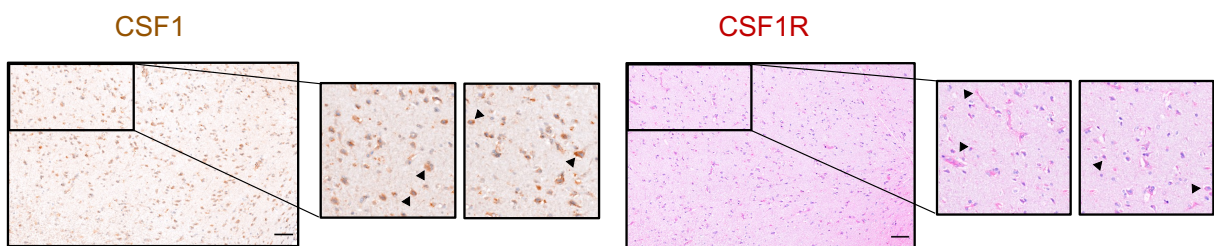


Figure S8. Markers for TAM subpopulations and TME of IDH mutant gliomas derived from snRNA-seq data. Related to Figure 1 and 3. (A) Dot plot showing three key marker genes for the TAM subpopulations in oligodendrogliomas (**top**) and astrocytomas (**bottom**). OD, oligodendroglioma; AS, astrocytoma. **(B)** Density gradient of pro-inflammatory and anti-inflammatory signatures in TAMs of astrocytomas (**B**) and oligodendrogliomas (**C**). OD, oligodendroglioma; AS, astrocytoma. **(D)** Boxplots showing pro-inflammatory (top) and anti-inflammatory (bottom) scores per TAM subpopulation in oligodendrogliomas and astrocytomas. **(E)** Dot plot showing marker genes for the T cell population in oligodendrogliomas (top) and astrocytomas (bottom). OD, oligodendroglioma; AS, astrocytoma.

A



B



C

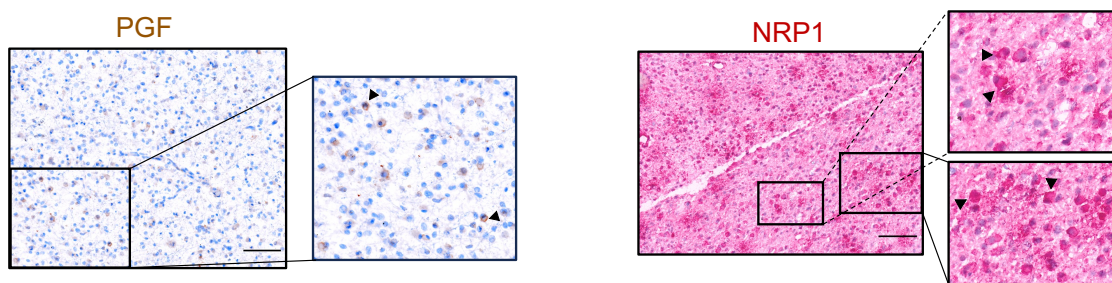


Figure S9. IHC staining for IDH1 R132H, p-STAT1, CSF1, CSF1R, PGF and NRP1 in IDH mutant glioma tissues. Related to Figure 3. (A) Representative double IHC staining for IDH1 R132H and p-STAT1 in grade 3 astrocytomas of four patients. Images were captured at 40x magnification, and crops from each image are shown next to their respective panels. Cells expressing both IDH1 R132H (brown) and p-STAT1 (blue) are indicated by black arrows. Cells expressing only p-STAT1 (blue) are marked by blue arrows, while cells expressing only IDH1 R132H (brown) are indicated by brown arrows. **(B)** Representative IHC staining for CSF1 (brown, left) and CSF1R (red, right) are shown in grade 2 primary astrocytomas. Nuclei are stained blue. Images are taken at 40x magnification, and crops from each image are shown next to their respective panels. Arrows indicate representative stained cells. Scale bar, 100 μ m. **(C)** Representative IHC staining for PGF (brown, left) and NRP1 (red, right) are shown in grade 2 astrocytomas. Images are taken at 40x magnification, and crops from each image are shown next to their corresponding panels. Nuclei are stained blue. Arrows indicate representative stained cells. Scale bar, 100 μ m.

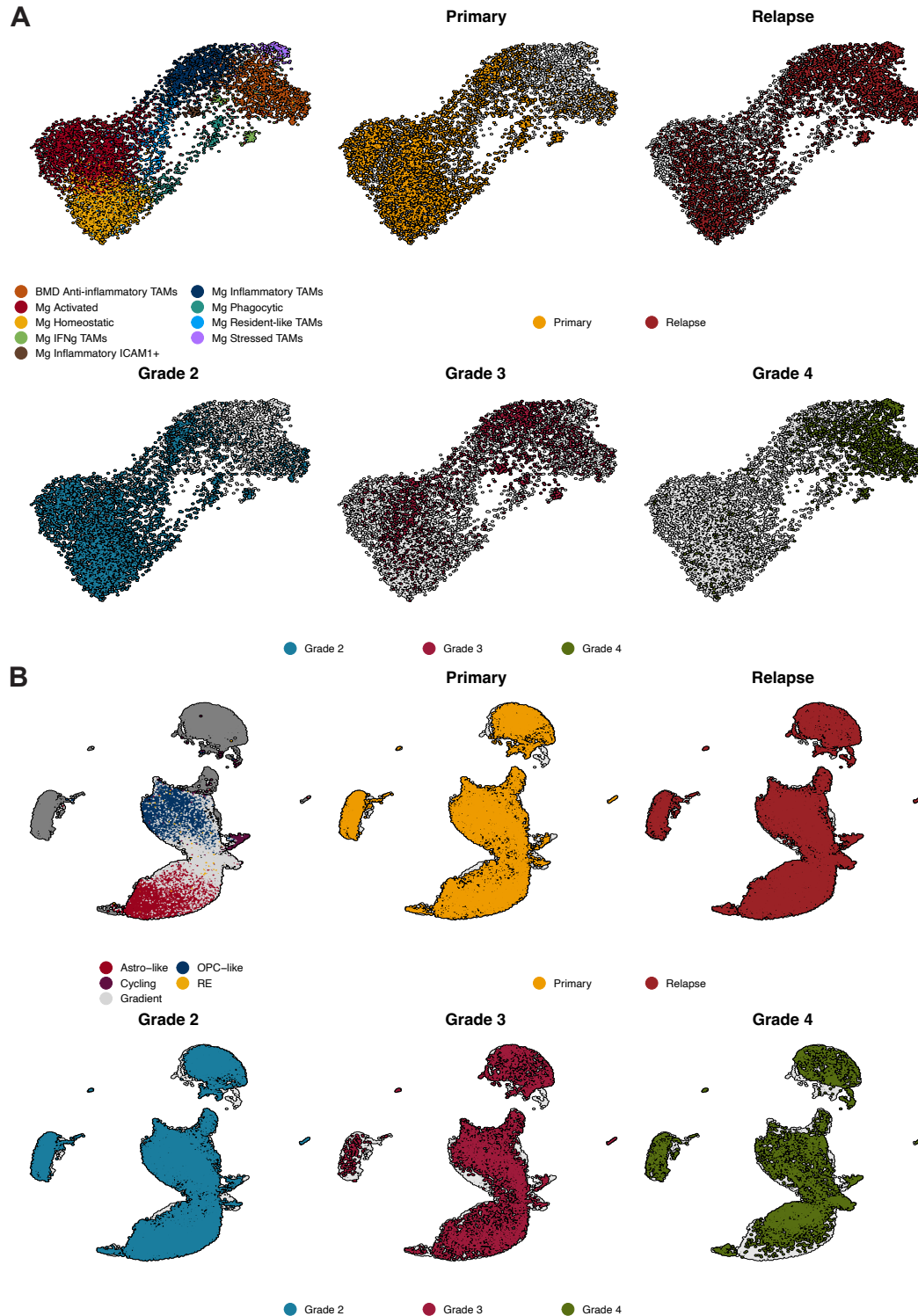


Figure S10. UMAP of integrated TAMs and paired primary-recurrent astrocytomas. Related to Figures 3 and 4. (A) UMAP representation of integrated microglia from astrocytomas and oligodendrogliomas. Colors depict TAM clusters (top left), relapse status (top middle, top right) or grade (bottom). UMAP1, *x*-axis; UMAP2, *y*-axis. **(B)** UMAP representation of paired astrocytomas. Clusters are colored by tumor populations (top left), relapse status (top middle, top right), or grade (bottom). UMAP1, *x*-axis; UMAP2, *y*-axis.