

Figure 3

Blot for Figure 3.

Lane 1: MW markers

Lane 2: *drd¹/drd¹*, stage 10 egg chamber

Lane 3: *drd¹/drd¹*, stage 14 egg chamber

Lane 4: *drd¹/drd¹*, laid eggs 0-3 hours after oviposition

Lane 5: *drd¹/drd¹*, laid eggs 0-6 hours after oviposition

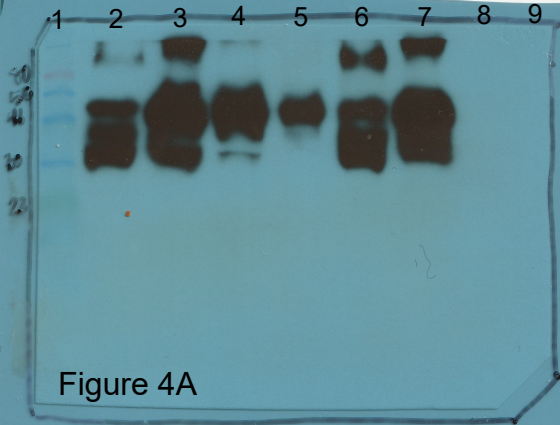
Lane 6: *drd¹/FM7c*, stage 10 egg chamber

Lane 7: *drd¹/FM7c*, stage 14 egg chamber

Lane 8: *drd¹/FM7c*, laid eggs 0-3 hours after oviposition

Lane 9: *drd¹/FM7c*, laid eggs 0-6 hours after oviposition

4 egg chambers or eggs per lane. Anti-Cp36, 1:5000.



Blot for Figure 4A

Lane 1: MW markers

Lane 2: *drd¹/drd¹*, stage 10 egg chamber

Lane 3: *drd¹/drd¹*, stage 14 egg chamber

Lane 4: *drd¹/drd¹*, laid eggs 0-3 hours after oviposition

Lane 5: *drd¹/drd¹*, laid eggs 0-6 hours after oviposition

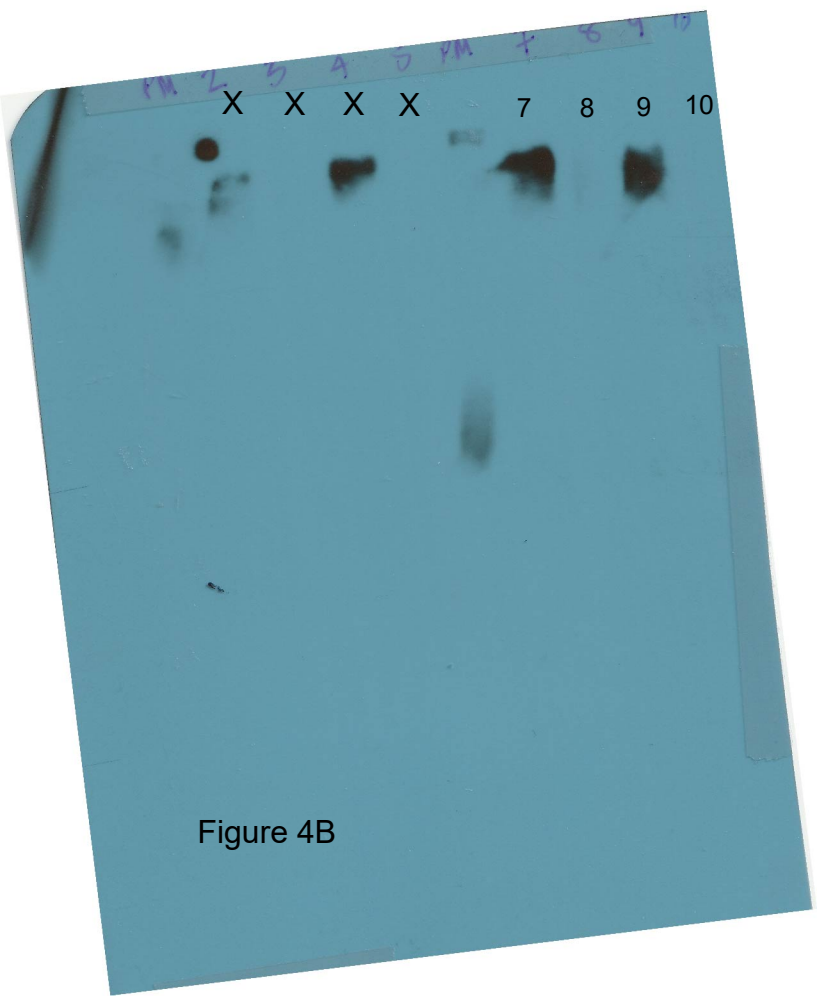
Lane 6: *drd¹/FM7c*, stage 10 egg chamber

Lane 7: *drd¹/FM7c*, stage 14 egg chamber

Lane 8: *drd¹/FM7c*, laid eggs 0-3 hours after oviposition

Lane 9: *drd¹/FM7c*, laid eggs 0-6 hours after oviposition

4 egg chambers or eggs per lane. Anti- Vm26Ab, 1:10,000.



Blot for Figure 4B

Lane 7: *drd¹/FM7c*, stage 10 egg chamber

Lane 8: *drd¹/FM7c*, stage 14 egg chamber

Lane 9: *drd¹/drd¹*, stage 10 egg chamber

Lane 10: *drd¹/drd¹*, stage 14 egg chamber

2 egg chambers per lane, no reducing agents added. Anti- Vm26Ab, 1:10,000.

Note that lanes 2-5 are the same samples, same antibody, 1:25,000 dilution.

1 2 3 4 5 6 7 8 2 3 4 5 6 7 8 9
X X X X X X X X 2 3 4 5 6 7 8 9



Figure 7

11111

Blot for Figure 7

Lane 2: *w; CY2-GAL4/CyO*, stage 14 egg chambers

Lane 3: *w; CY2-GAL4/CyO*, laid eggs

Lane 4: *w; UAS-Dcr-2 drd^{GD3367}/CY2-GAL4*, stage 14 egg chambers

Lane 5: *w; UAS-Dcr-2 drd^{GD3367}/CY2-GAL4*, laid eggs

Lane 6: *w; CyO/+; T155-GAL4/+*, stage 14 egg chambers

Lane 7: *w; CyO/+; T155-GAL4/+*, laid eggs

Lane 8: *w; UAS-Dcr-2 drd^{GD3367}/+; T155-GAL4/+*, stage 14 egg chambers

Lane 9: *w; UAS-Dcr-2 drd^{GD3367}/+; T155-GAL4/+*, laid eggs

2 egg chambers or eggs per lane. Anti- Vm26Ab, 1:25,000.