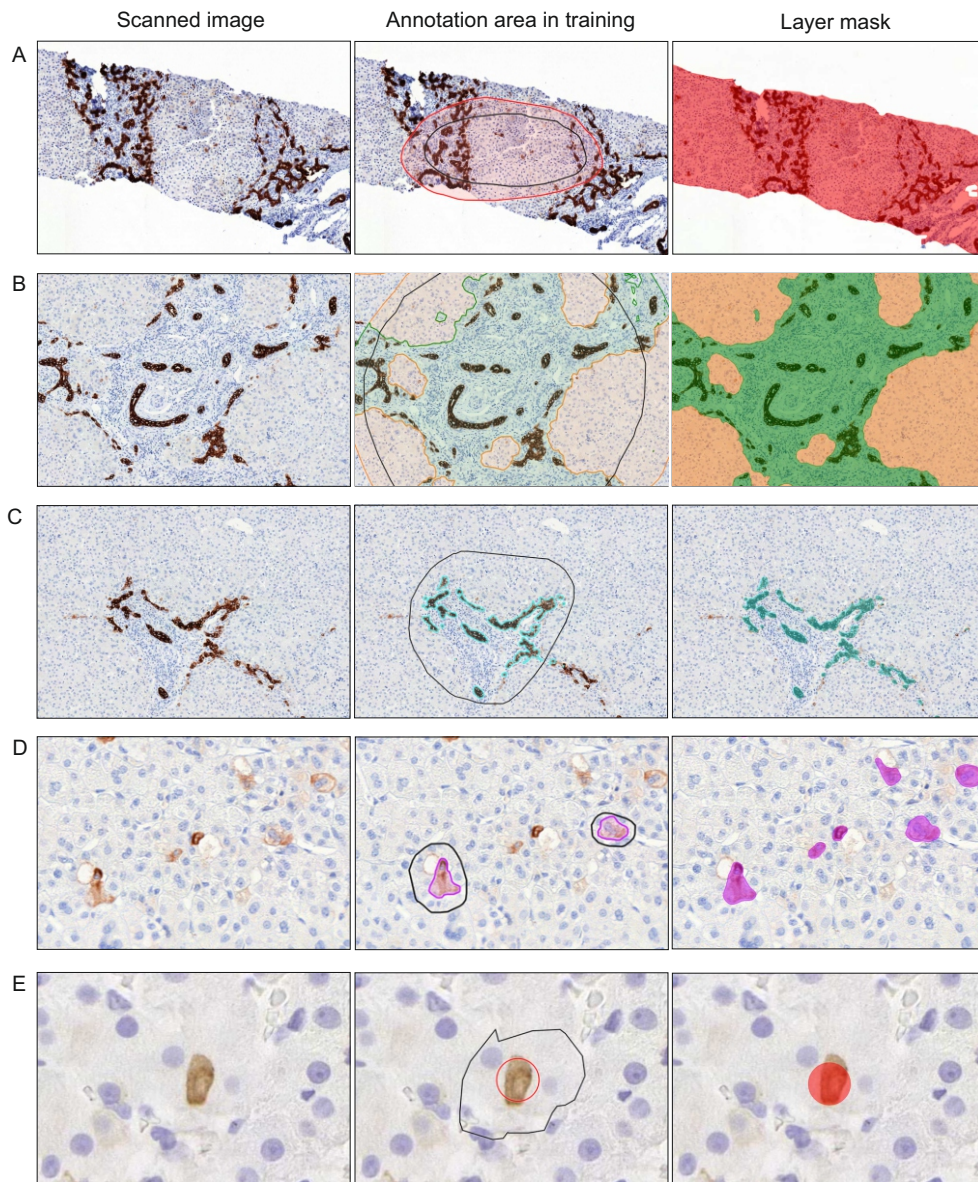


Supplementary Figure 1. Model training



Supplementary Fig 1. Training of CharBADR model. Scanned original images, annotation areas in training, and layer masks of (A) liver tissue, (B) liver parenchyma and PA, (C) BE, (D) PIH area, and (E) PIH cells. BE, biliary epithelium; PA, portal area; PIH, parenchymal intermediate hepatocytes.