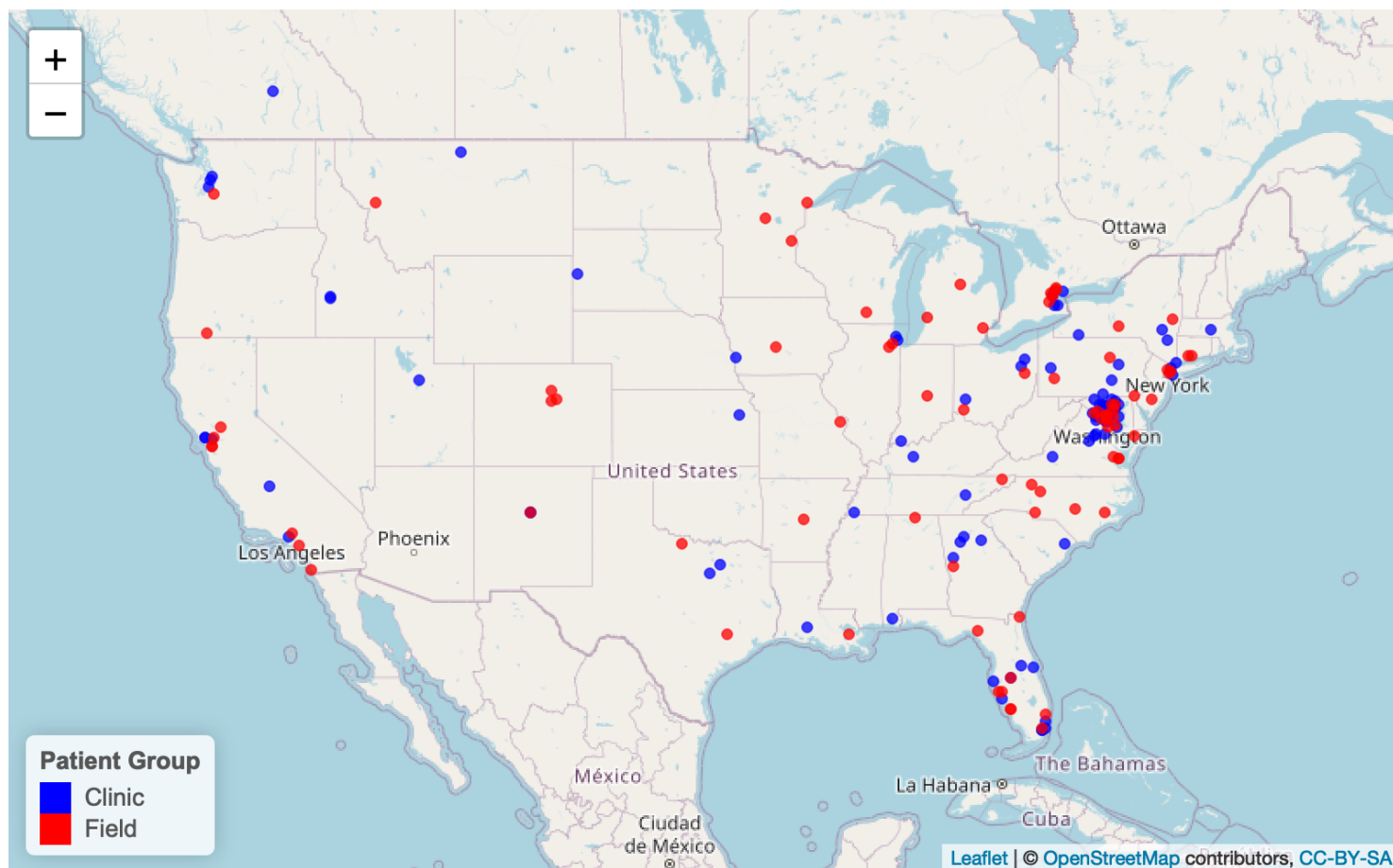
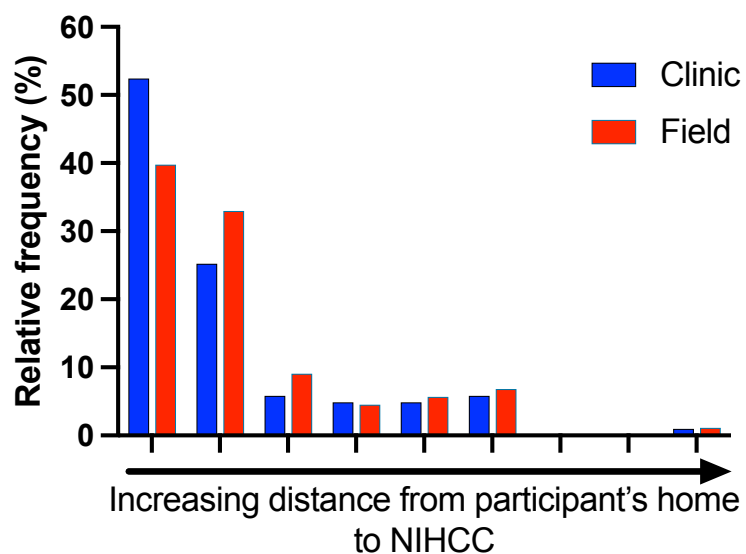


SUPPLEMENTAL FIG 4: Geographic distribution of clinic and field cohort

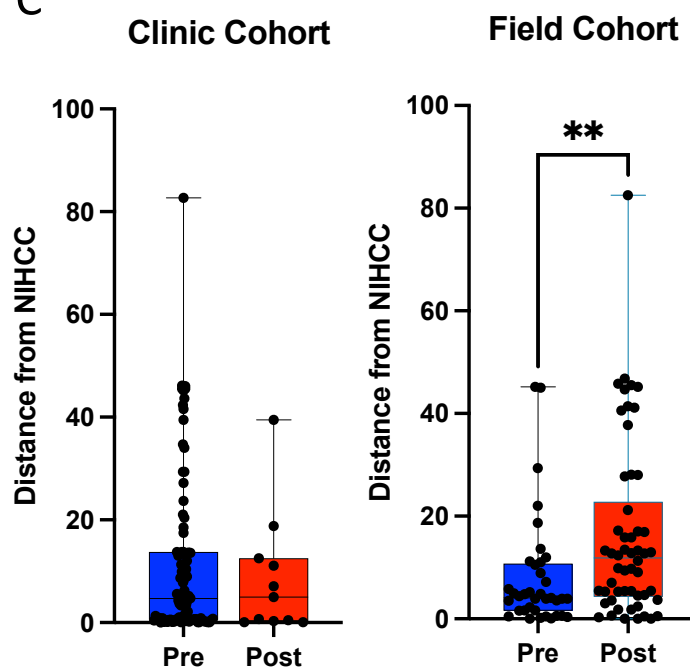
A



B



C



Supplemental Figure 4: Distribution of enrollees participating remotely (field; red) or traveling to NIHCC (clinic; blue), located in Bethesda, MD (A). The majority of participants are concentrated in the area of NIHCC (A), but comparison of field (red) and clinic (blue) groups showed no significant difference (Mann Whitney two-tailed test, P=0.11). Pandemic restrictions starting in March 2020 reduced the number of participants enrolling in the clinic group, but there were no significant differences how far away they lived from NIHCC (Mann Whitney two-tailed test, P=0.53) (B); however there was an increased enrollment of field group participants and a significant increase how far they lived from NIHCC (Mann Whitney two-tailed test, P=0.0046) (C). Distance units are $\sqrt{\text{degrees_lat}^2 + \text{degrees_long}^2}$.