

Online Supplement

Augmentation Therapy for Alpha-1 Antitrypsin Deficiency: Patient Experiences with Self-Infusion, Home Providers, and Clinics

Charlie Strange, MD^{1,2} Sheri Allison² Jean McCathern² Robert A. Sandhaus, MD, PhD^{2,3} Kristen E. Holm, PhD, MPH^{2,3}

¹ Medical University of South Carolina, Charleston, South Carolina, United States

² AlphaNet, Inc., Coral Gables, Florida, United States

³ National Jewish Health, Denver, Colorado, United States

Additional graphics of interesting findings from our research are included in this supplemental material that demonstrates the infusion practices of the AlphaNet population.

Figure S1. Time on infusion therapy is influenced by the age of the individual (N=5266). Age is correlated with time on therapy ($R^2= 0.04$, $p<0.001$). The mean age at initiation of alpha-1 augmentation therapy is 60 years.

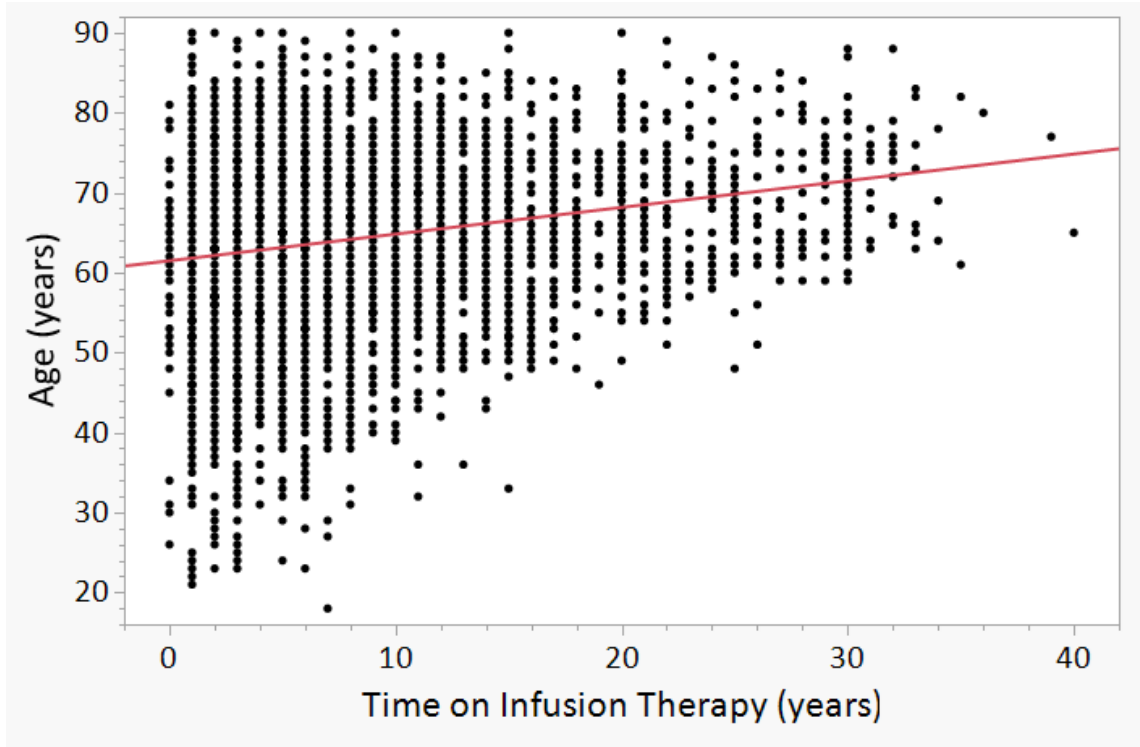


Figure S2. Duration of Self-Infusion among those currently Self-Infusing (N= 422).

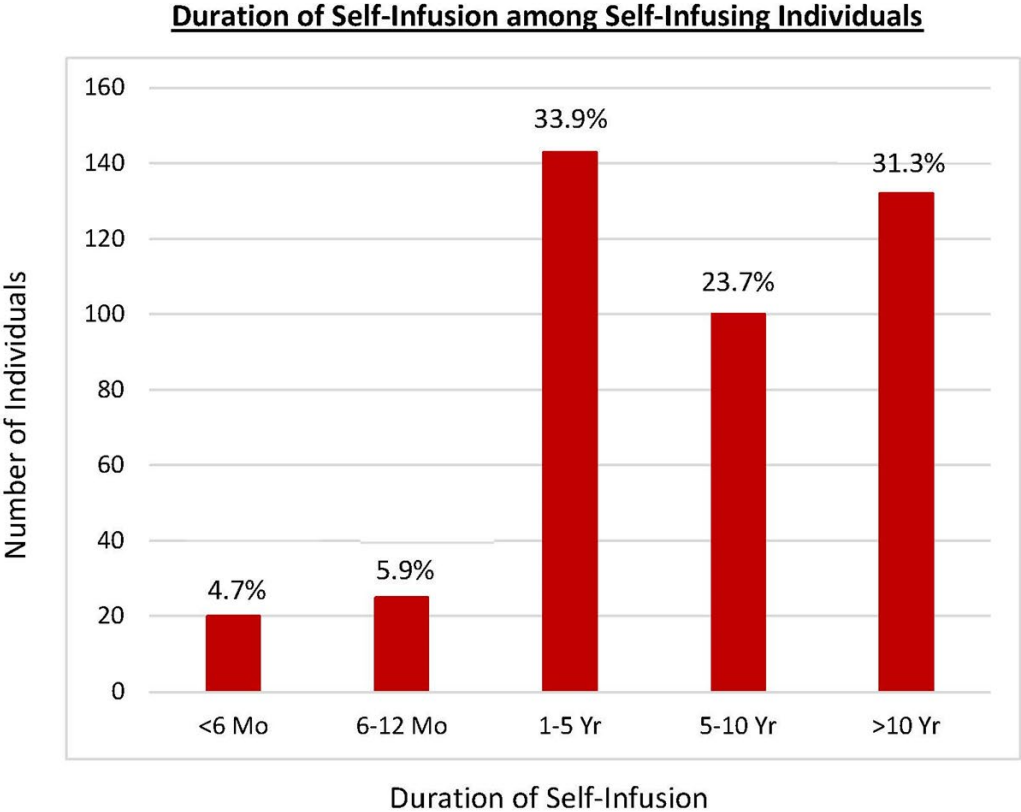


Figure S3. How Self-Infusers first heard about the technique (N= 422).

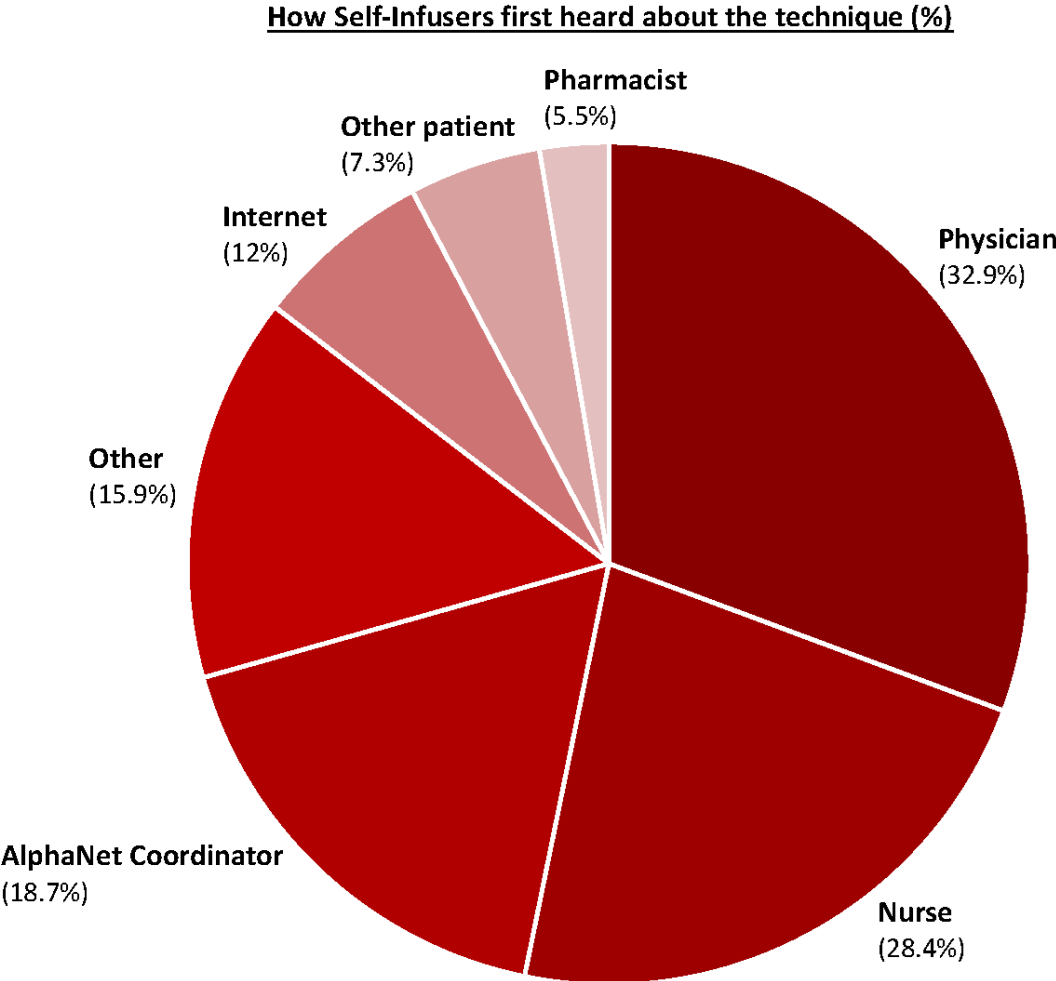
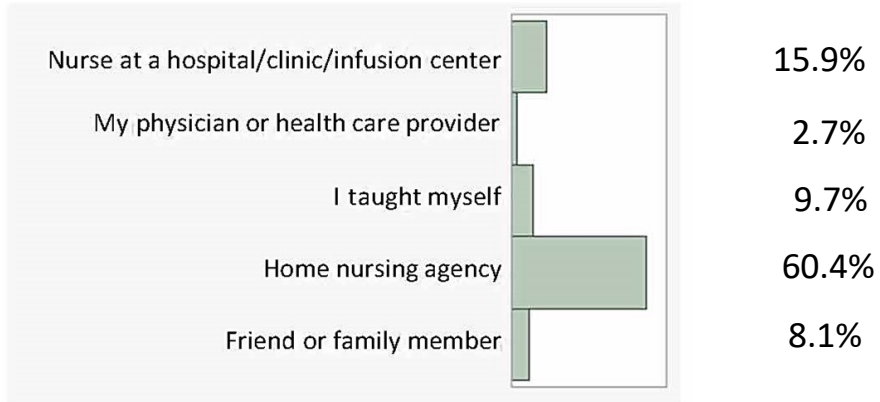
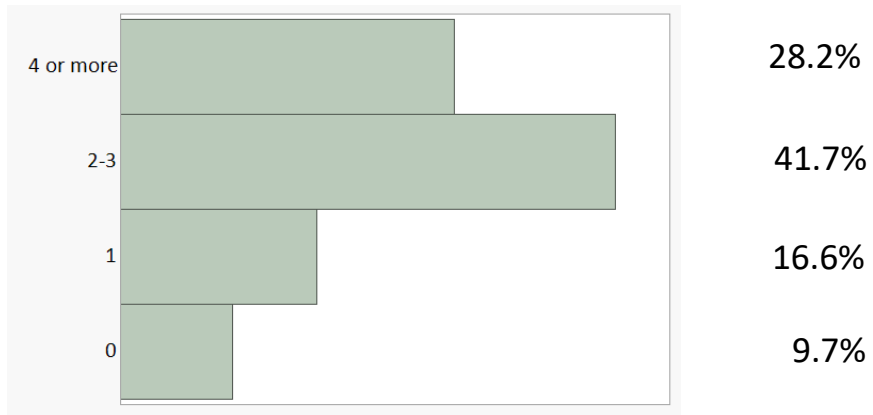


Figure S4. The onboarding process in learning self-infusion (N= 422).

Who primarily trained you to self-administer?



How many training sessions did you have while learning?



How long had you been on augmentation before you started?

