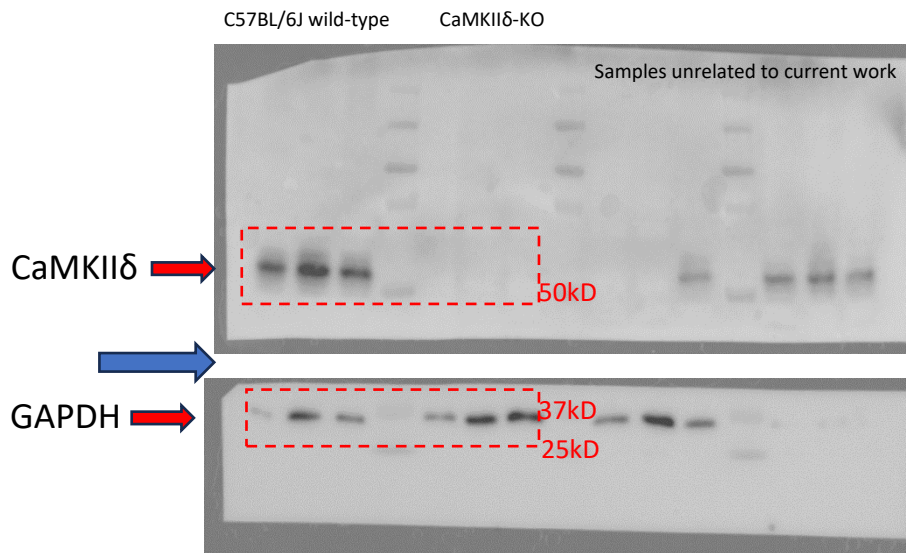
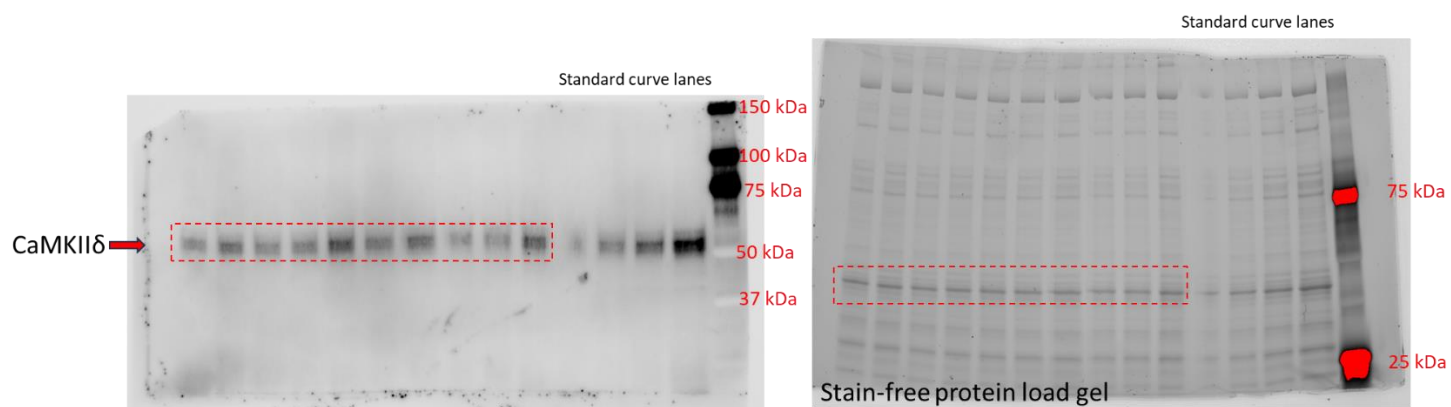
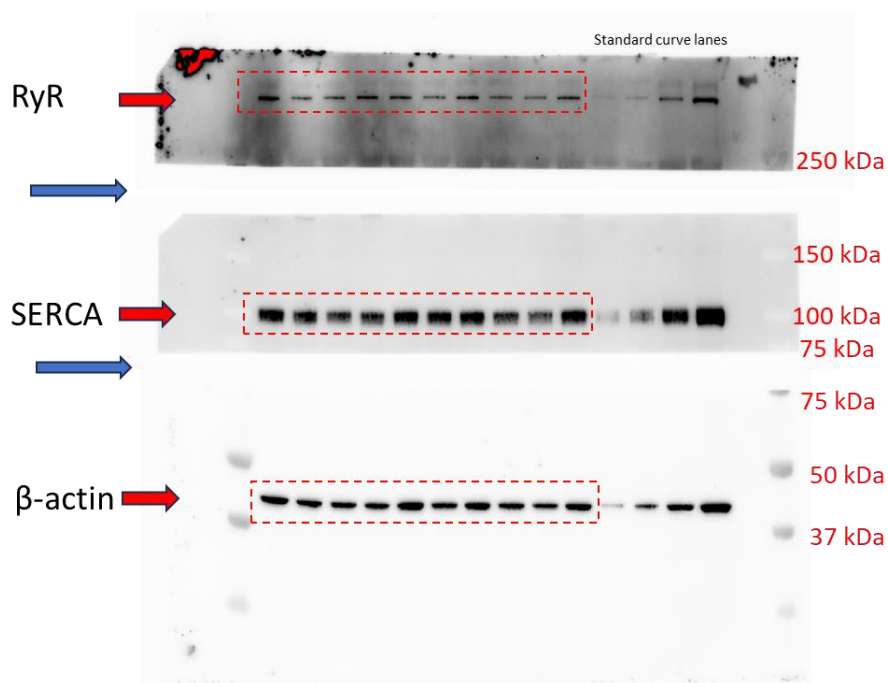


CaMKII δ -KO



Full uncropped immunoblot of CaMKII δ -KO from **Figure 1C**. Blue arrows indicate where the membrane was cut. The red-dotted rectangle indicates the portion of the blot displayed in the manuscript.

A**CaMKII δ** **B****RyR/SERCA/ β -actin**

Full uncropped immunoblots of (A) CaMKII δ and (B) RyR/SERCA/ β -actin from **Figure 3D**. Blue arrows indicate where the membrane was cut if applicable. The red-dotted rectangle indicates the portion of the blot displayed in the manuscript. Standard curve lanes are included to ensure sample reactivity is above background and below saturation.