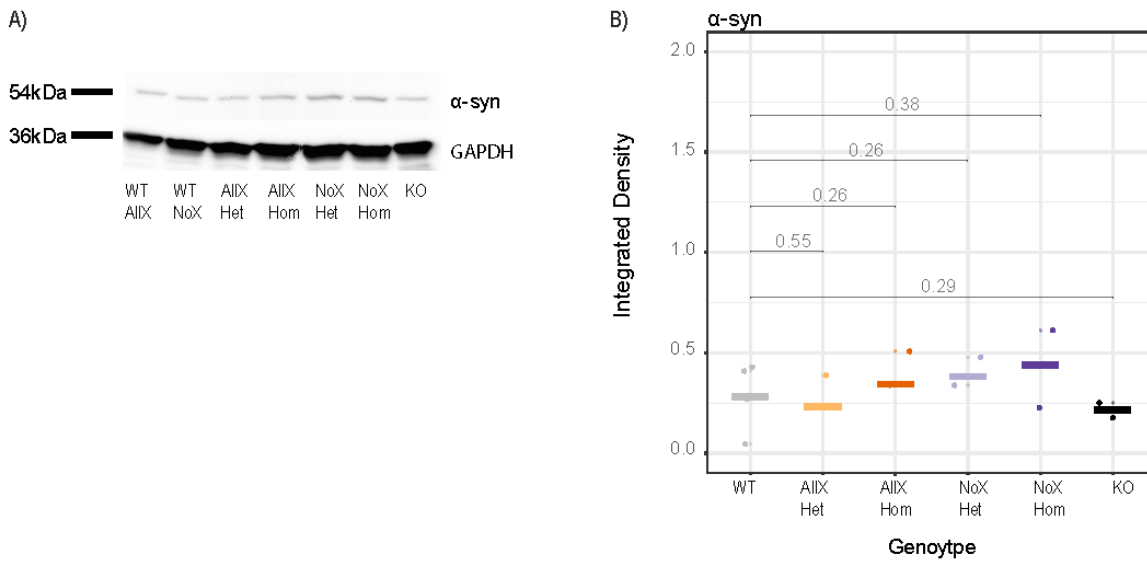


SUPPLEMENTARY MATERIAL

Evaluation of gliovascular functions of Aqp4 readthrough isoforms

Shayna M. Mueller^{*1,2}, Kelli McFarland White^{*1,2}, Stuart B. Fass^{1,2}, Siyu Chen^{1,2,3}, Zhan Shi⁴, Xia Ge^{3,6}, John A. Engelbach^{3,6}, Seana H Gaines³, Annie R Bice³, Michael J. Vasek^{1,2}, Joel R. Garbow^{3,6}, Joseph P. Culver^{3,7,8,9,10}, Zila Martinez-Lozada¹¹, Martine Cohen-Salmon¹², Joseph D. Dougherty^{++1,2,6}, Darshan Sapkota^{++4,5}



Supplemental Figure 3: α -syn trophin total protein levels are not affected by genotype. A) Western blot showing α -syn trophin and GAPDH expression. 20ug of protein was loaded onto the gel. GAPDH was used as loading control. n = 3 mice per genotype. B) Wilcoxon test used. Total α -syn trophin protein is not changed among genotypes.