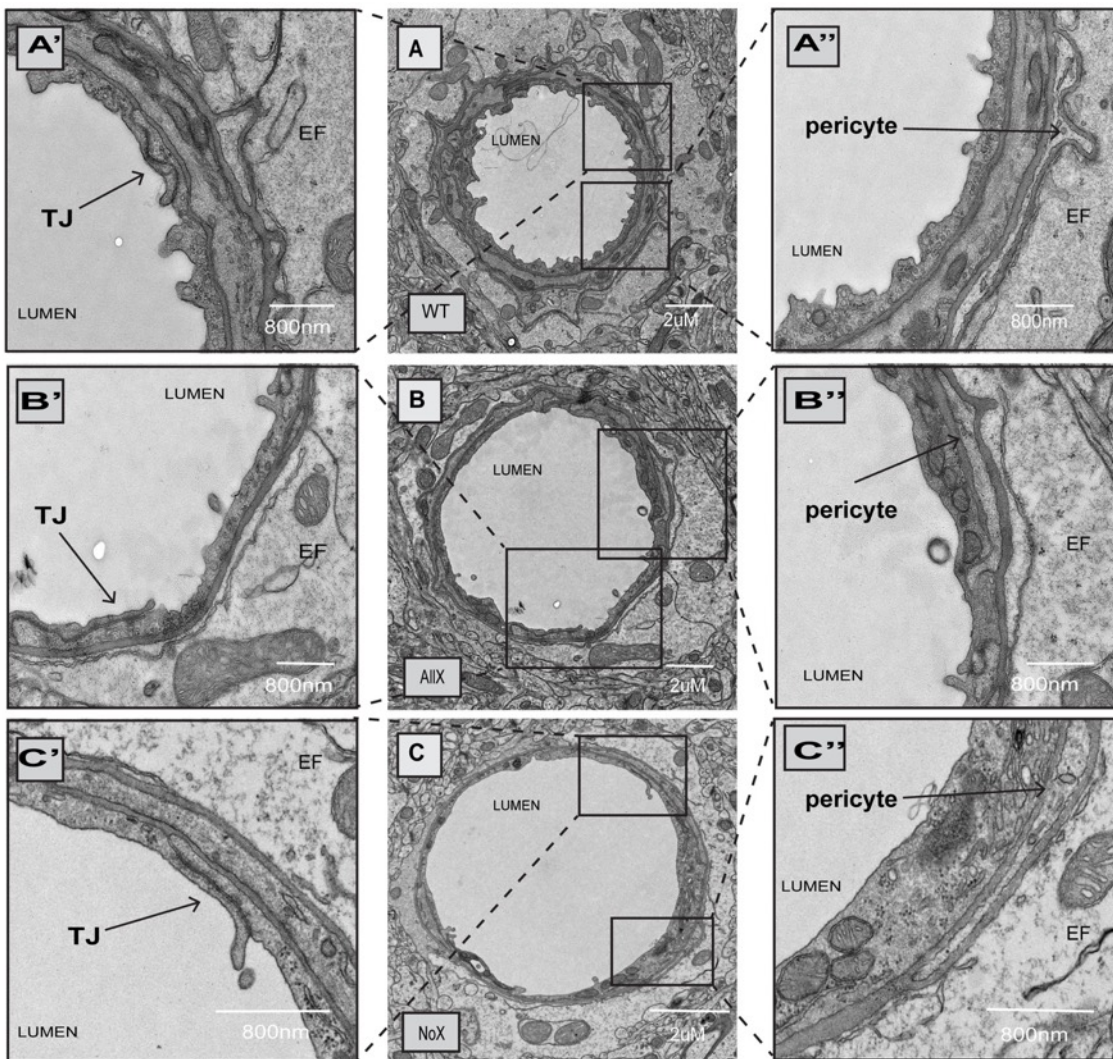


## SUPPLEMENTARY MATERIAL

### Evaluation of gliovascular functions of Aqp4 readthrough isoforms

Shayna M. Mueller<sup>\*1,2</sup>, Kelli McFarland White<sup>\*1,2</sup>, Stuart B. Fass<sup>1,2</sup>, Siyu Chen<sup>1,2,3</sup>, Zhan Shi<sup>4</sup>, Xia Ge<sup>3,6</sup>, John A. Engelbach<sup>3,6</sup>, Seana H Gaines<sup>3</sup>, Annie R Bice<sup>3</sup>, Michael J. Vasek<sup>1,2</sup>, Joel R. Garbow<sup>3,6</sup>, Joseph P. Culver<sup>3,7,8,9,10</sup>, Zila Martinez-Lozada<sup>11</sup>, Martine Cohen-Salmon<sup>12</sup>, Joseph D. Dougherty<sup>++1,2,6</sup>, Darshan Sapkota<sup>++4,5</sup>



**Supplemental Figure 6. Other ultrastructures appear grossly normal between genotypes. A-C) Representative EM images of WT, AilX, and NoX blood vessels depicting tight junctions and pericytes. A' inset) Tight junction (TJ) (black arrow) between endothelial cells of a WT blood vessel. A'' inset) a presumed pericyte (black arrow) on the abluminal surface of a WT blood vessel. B' inset) Tight junction (TJ) (black arrow) between endothelial cells of an AilX blood vessel. B'' inset) a presumed pericyte (black arrow) on the abluminal surface of an AilX blood vessel. C' inset) Tight junction (TJ) (black arrow) between endothelial cells of a NoX blood vessel. C'' inset) a presumed pericyte (black arrow) on the abluminal surface of a NoX blood vessel.**