

Supplementary Figures and Legends

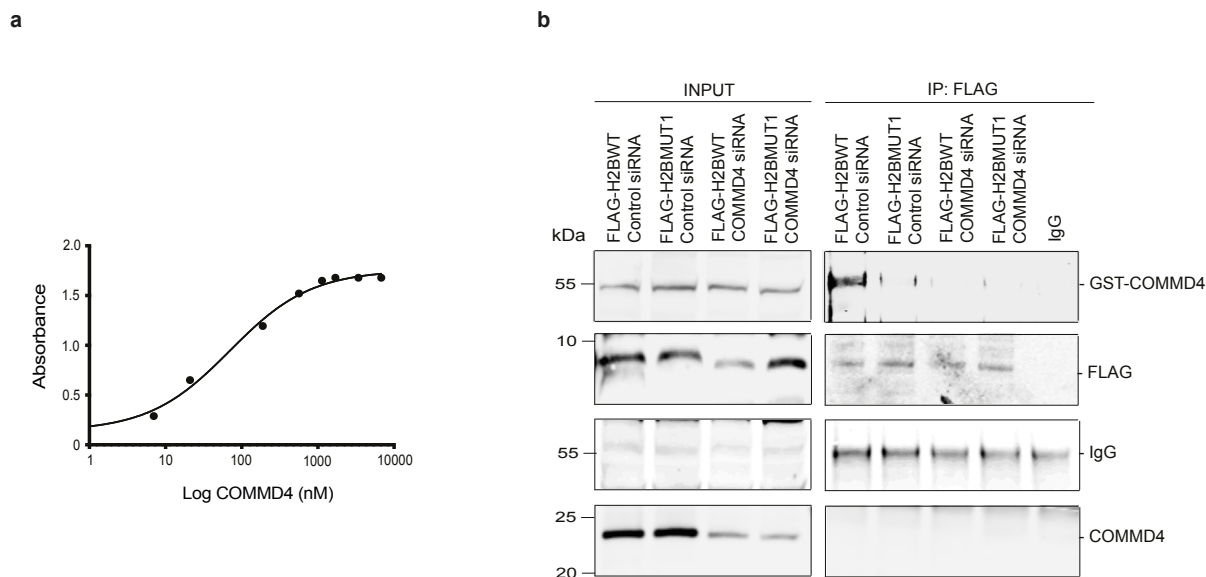


Fig. S1. Confirming the COMMD4 and H2B binding pose. (a). An ELISA showing the binding of H2BWTpep and recombinant COMMD4. An EC₅₀ of 70 nM for COMMD4 is shown. **(b).** The binding of overexpressed FLAG-H2BWT and FLAG-H2BMUT1 with GST-COMMD4 in control and COMMD4 siRNA depleted cells. COMMD4 levels are shown, and IgG heavy chain shows the loading.

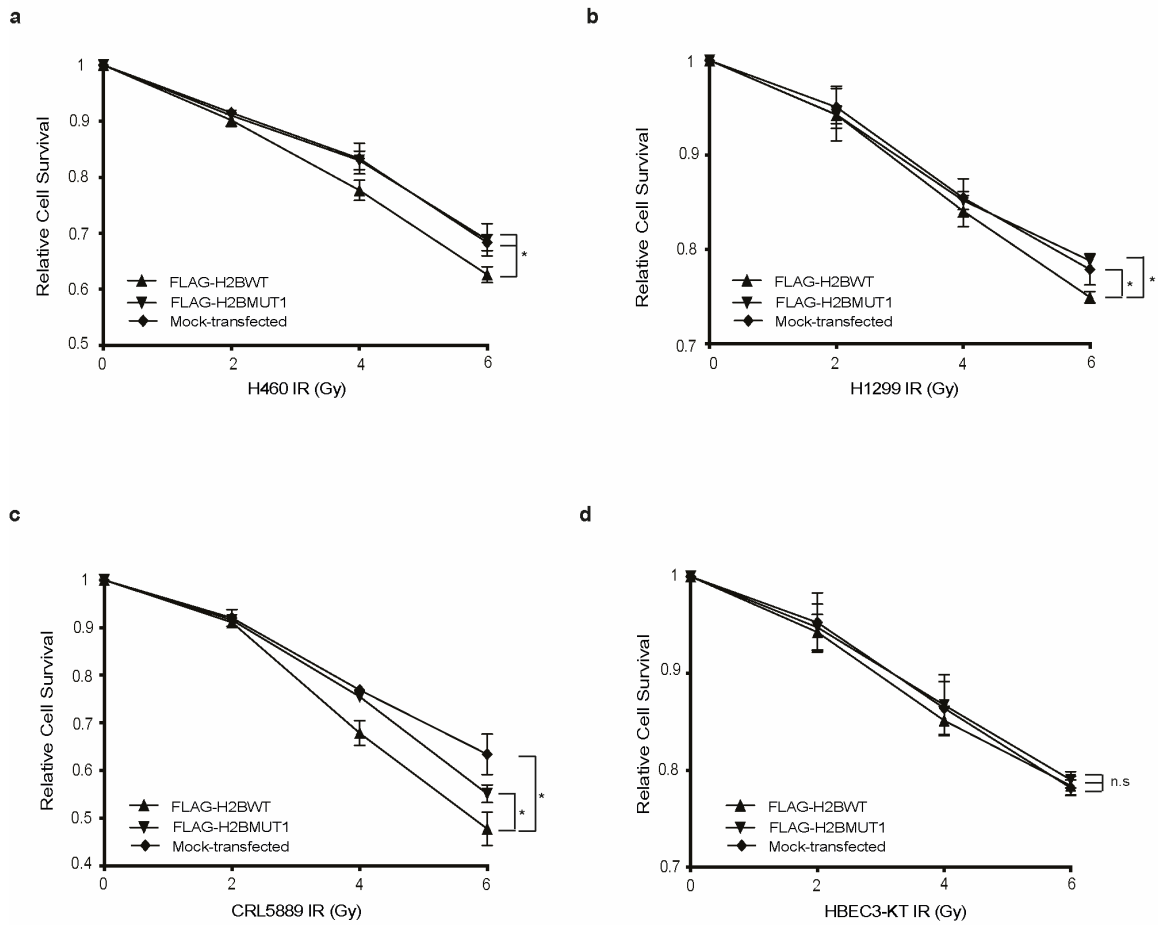


Fig. S2. Viability of NSCLC cells. (a-d). Luminescent cell viability assay of H460, H1299 and CRL5889 NSCLC cells and HBEC3-KT cells, transfected with FLAG-H2BWT, FLAG-H2BMUT1 or mock-transfected and treated with varying doses of IR is shown. Asterix (*) denotes $P < 0.05$, n.s; not significant. Error bars represent mean \pm SD from three independent experiments.

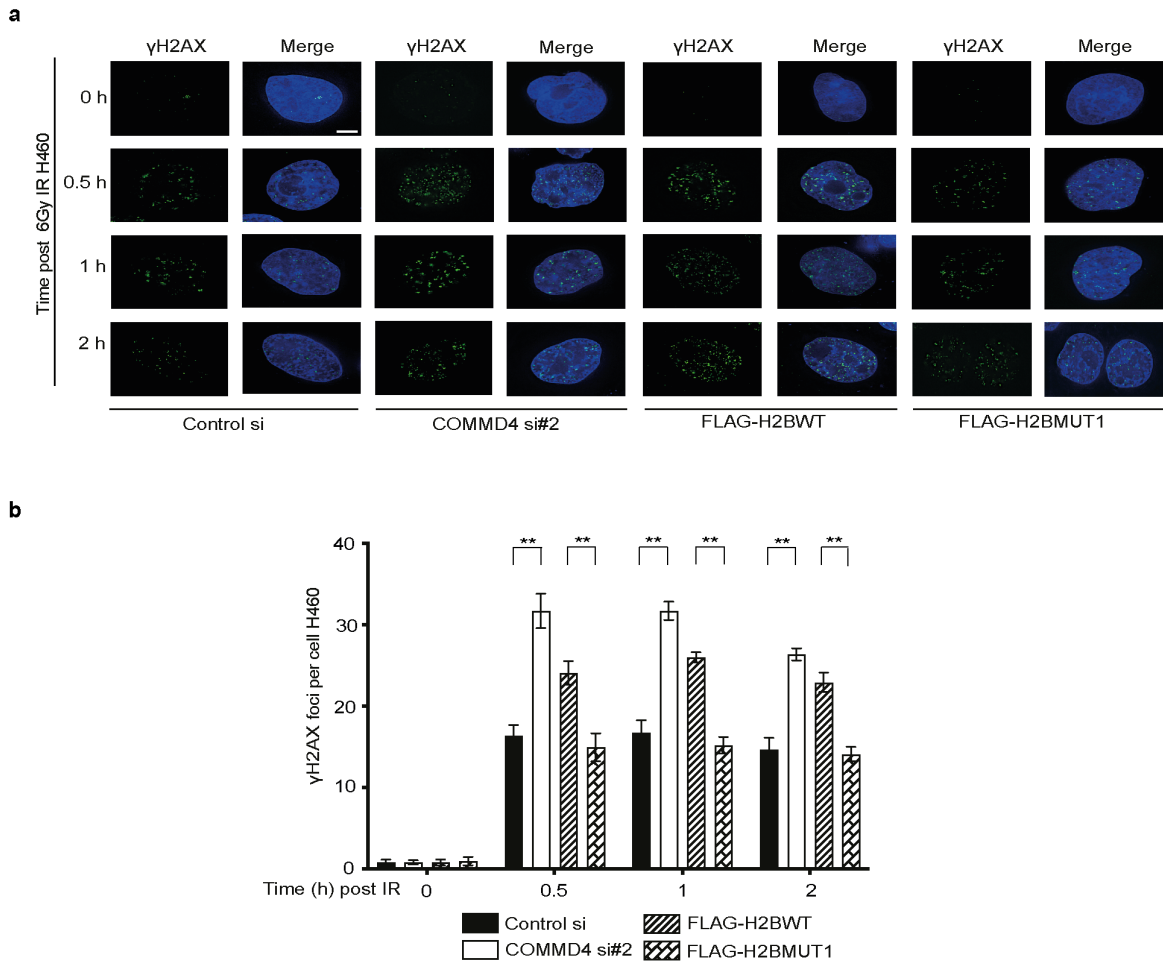


Fig. S3. Induction of γ H2AX foci in H460 cells. (a). Immunofluorescence staining of H460 NSCLC cells transfected with control or COMMD4 siRNA #2 and FLAG-H2BWT or FLAG-H2BMUT1, treated with 6 Gy IR followed by recovery at time points shown. **(b).** Plot of γ H2AX foci numbers for **(a)**. **: $P < 0.005$. Error bars represent mean \pm SD from three independent experiments where 50 cells were quantified per condition. γ H2AX is shown in green and DAPI shows the nucleus. Scale bar denotes 5 μ m.

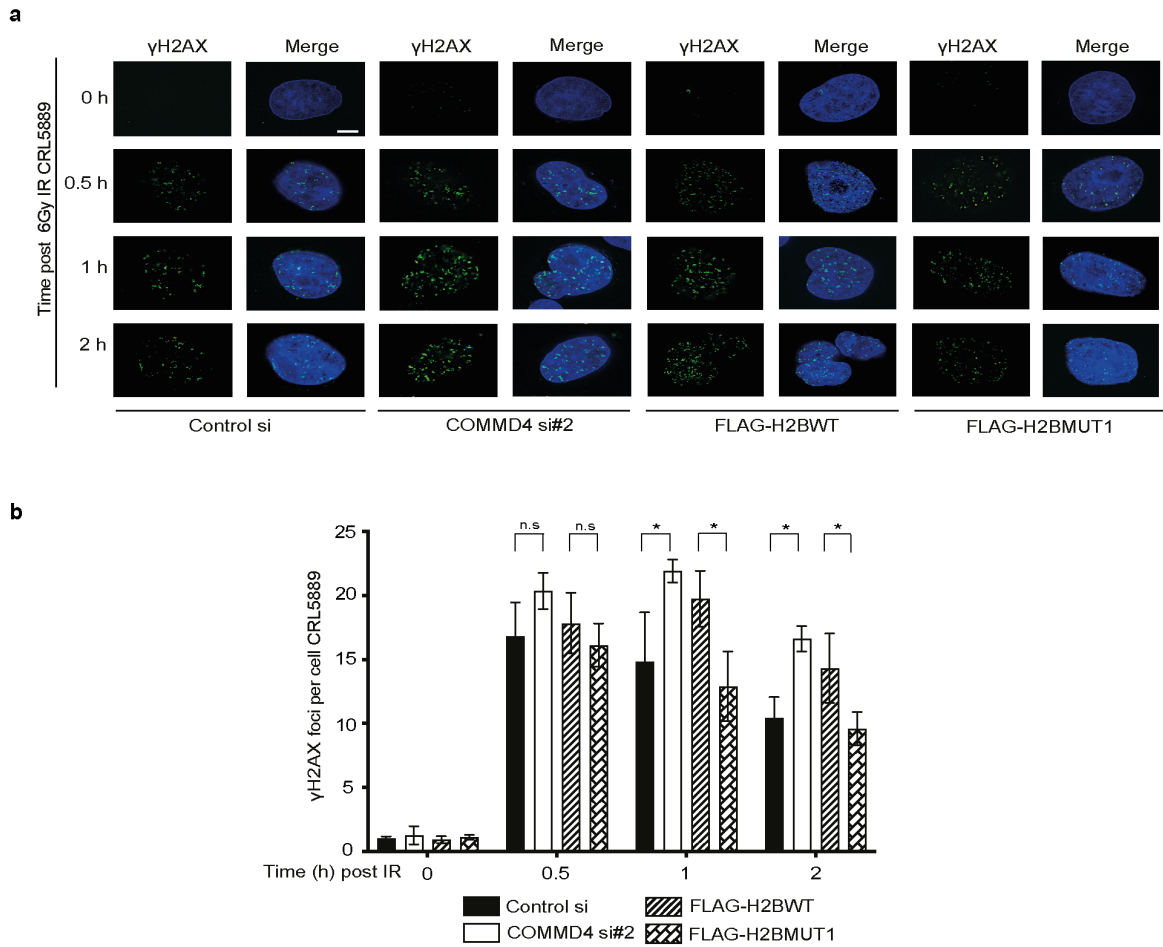


Fig. S4. Induction of γ H2AX foci in CRL5889 cells. (a). Immunofluorescence staining of CRL5889 NSCLC cells transfected with control or COMMD4 siRNA #2 and FLAG-H2BWT or FLAG-H2BMUT1, treated with 6 Gy IR followed by recovery at time points shown. **(b).** Plot of γ H2AX foci numbers for **(a)**. n.s.; not significant and *; $P < 0.05$. Error bars represent mean \pm SD from three independent experiments where 50 cells were quantified per condition. γ H2AX is shown in green and DAPI shows the nucleus. Scale bar denotes 5 μ m.