

Genetic and Clinical Characteristics of PROM1-related Retinal Degeneration in Korean

Sungsoon Hwang, MD^{1,2}; Se Woong Kang, MD, PhD¹; Ja-Hyun Jang, MD, PhD³; Sang Jin Kim, MD, PhD¹

¹Department of Ophthalmology, Samsung Medical Center, Sungkyunkwan University School of Medicine, Seoul, Republic of Korea

²Department of Clinical Research Design and Evaluation, Samsung Advanced Institute for Health Sciences and Technology (SAIHST), Sungkyunkwan University, Seoul, Republic of Korea

³Department of Laboratory Medicine and Genetics, Samsung Medical Center, Sungkyunkwan University School of Medicine, Seoul, Republic of Korea

Correspondence

Sang Jin Kim, MD, PhD

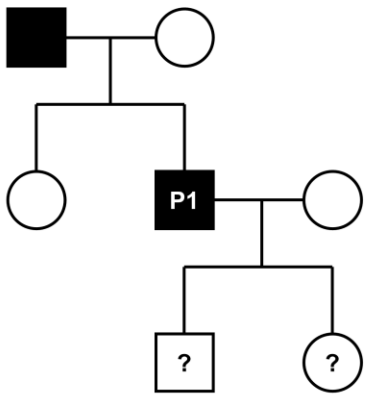
Department of Ophthalmology, Samsung Medical Center, Sungkyunkwan University School of Medicine, #81 Irwon-ro, Gangnam-gu, Seoul 06351, Republic of Korea

Tel: 82-2-3410-3548, Fax: 82-2-3410-0074

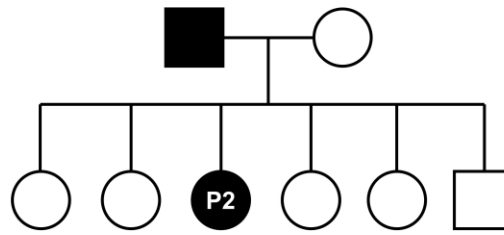
E-mail: sangjin.kim.md@gmail.com

Supplemental Figure 1. Pedigrees of seven patients from five families of PROM1-related inherited retinal disease.

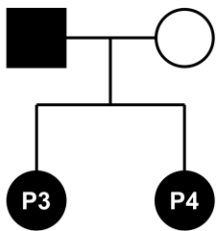
Family No. 1



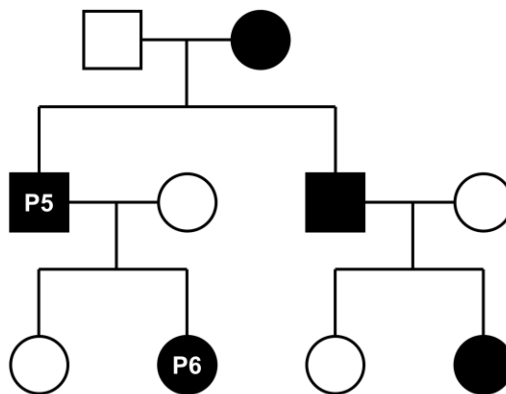
Family No. 2



Family No. 3



Family No. 4



Family No. 5

