

Figure S1. Purified receptors were characterized by western blotting of the His-tag band. His, histidine; LGR4, leucine-rich repeat-containing G-protein-coupled receptor 4; M, marker; RANK, receptor-activated nuclear factor- κ B.

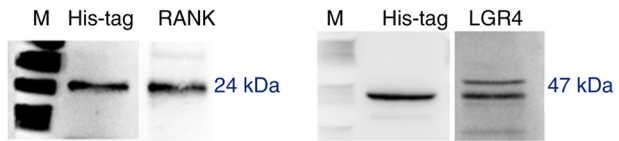


Figure S2. Cell viability was determined using the MTT assay. Bone marrow-derived macrophages were exposed to various concentrations of MK2206. The results are presented as the mean \pm standard deviation of three independent experiments.

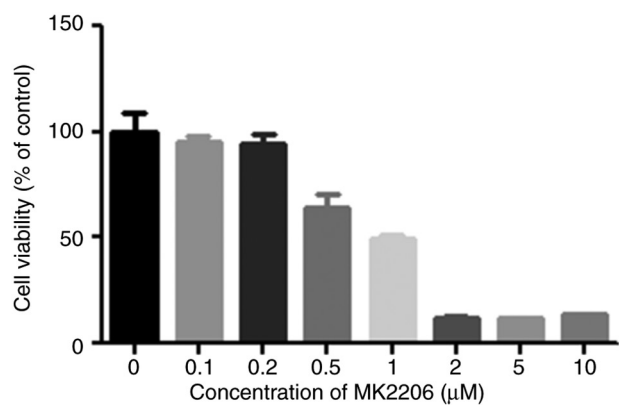


Figure S3. Cell viability was determined using the MTT assay. Bone marrow-derived macrophages were exposed to various concentrations of LiCl. The results are presented as the mean \pm standard deviation of three independent experiments. LiCl, lithium chloride.

