

Legends to Supplementary Figures:

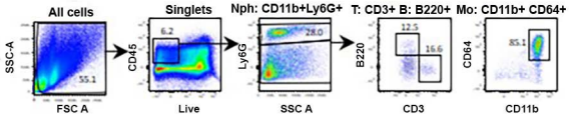
Supplementary Figure 1: Raw data on gating strategy for flow cytometry

Gating strategy for single-cell suspension from the MM at 1d post-vehicle (Veh) or CFA single intramuscular treatment. The strategy shows live singlets and different immune cells were gated from single-cell suspension. Abbreviations are SSC-A - side angle scattered area; FSC-A - forward angle scattered area; CD45⁺ - immune cells; Mo - monocytes, Nph – neutrophils, CD3 – T-cells.

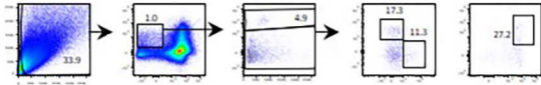
Supplementary Figure 2: Immune cell profiles in CFA and Col treated MM at post-hypersensitivity resolution time points.

(A) Immune cell counts per 10⁴ CD45⁺ cells in male MM at 5d post-vehicle (Veh) or CFA single intramuscular treatment. **(B)** Immune cell counts per CD45⁺ cells in MM at 14d post-vehicle (Veh), Col (0.2U) or Col (10U) single intramuscular treatment. DCs – dendritic cells; Mph – macrophages; iMph - inflammatory macrophages; Mo – monocytes; iMo - inflammatory monocytes; NK – natural killer cells; B – B-cells; T – T-cells and Neu – neutrophils. Statistic is 2-way ANOVA (* p<0.05; # p<0.0001; n=3-6).

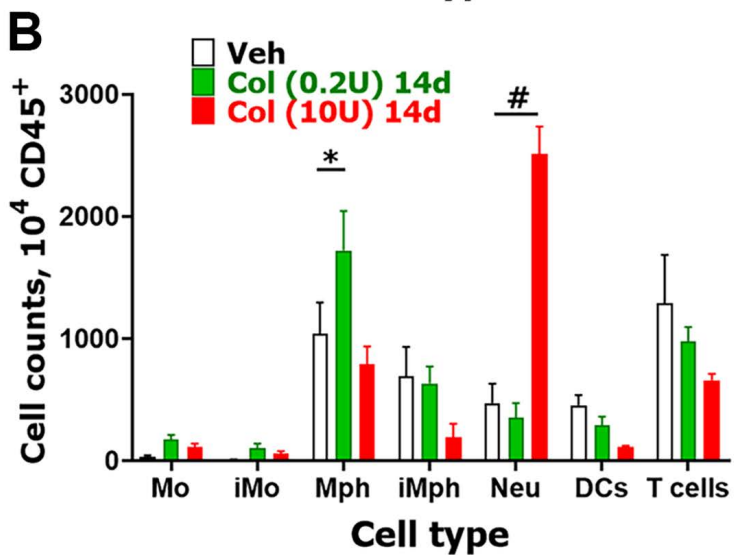
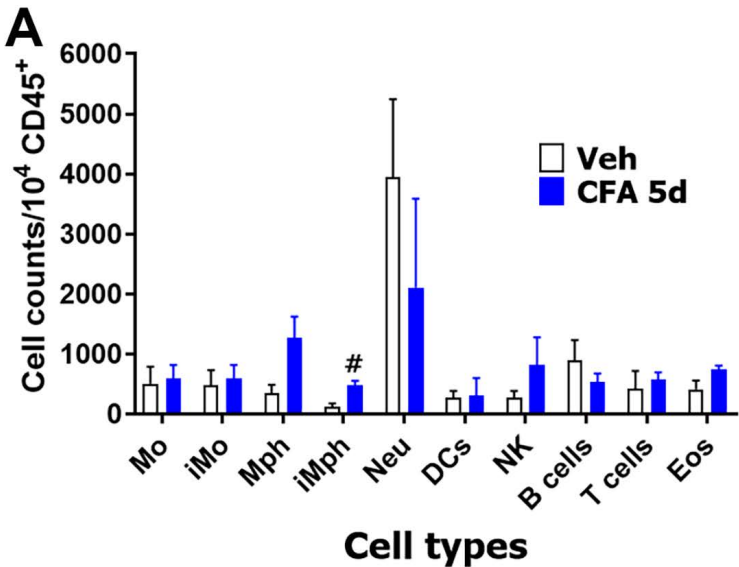
CFA



Veh



Supplementary Figure 1



Supplementary Figure 2